

SW-005, SW-504, SW-505 &
SW-508



EST. 1984



Quick Start Guide

for Brainboxes Ethernet Switch Range



Thank you for choosing this Brainboxes product

This quick start guide will help you set up your SW device so that you can quickly and easily begin experiencing the benefits of your Brainboxes Ethernet Switch.



Ethernet Switch
Device



Quick Start
Guide

Optional Accessory Items

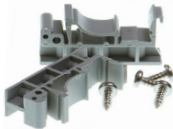
Power Supply



PW-600 (UK/EU/US/AUS)

- Suitable for use with all
SW products

DIN Rail Mounting Kit



MK-048

- Suitable for use with SW-005,
enables clip on DIN rail mounting

Power Supply



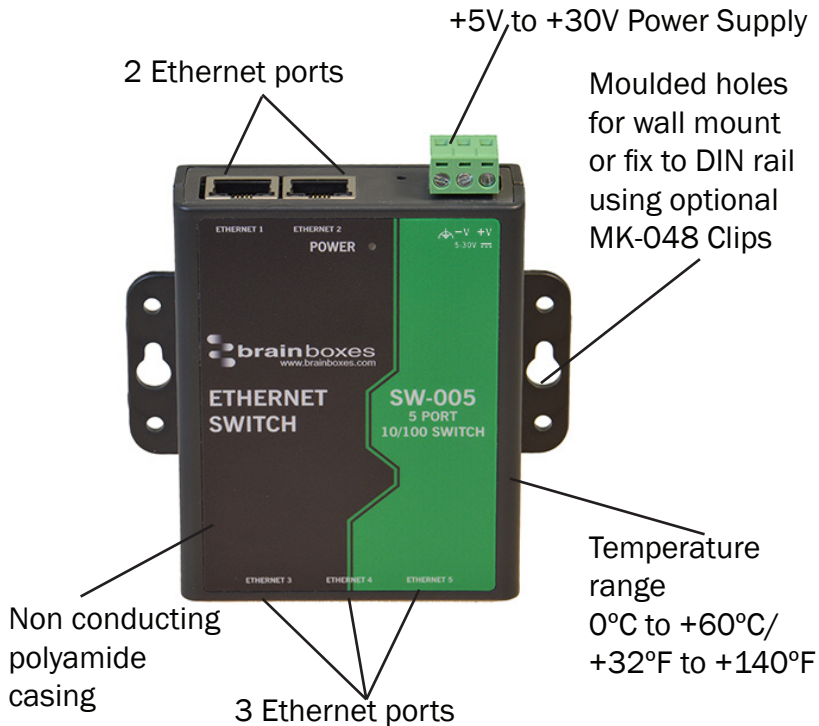
PW-650 USB

- Suitable for use with all
SW-5XX products

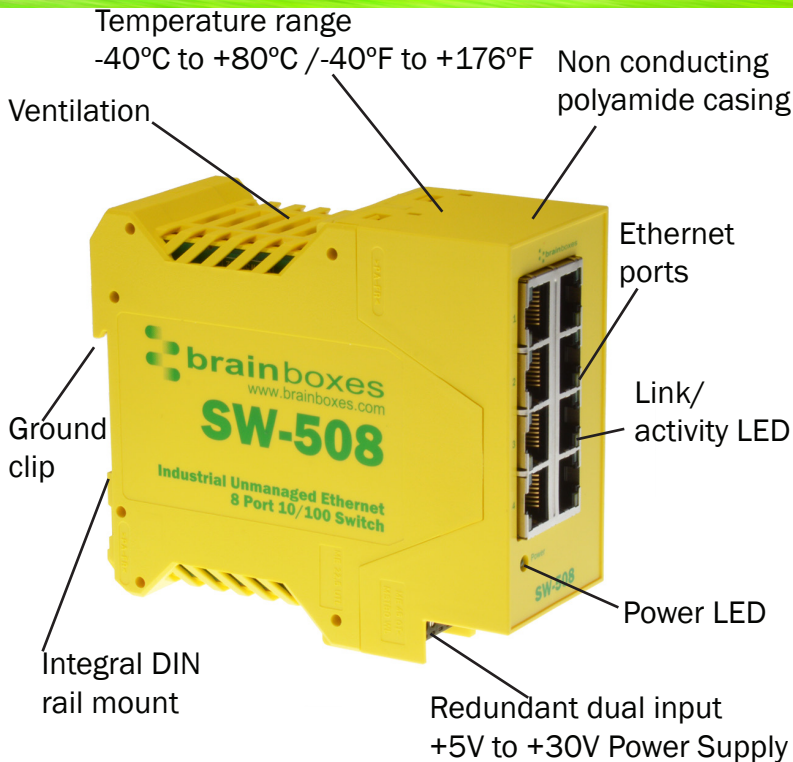
For more information, please refer to the datasheet

Information on Product Accreditations, Safety, and correct disposal of this product can be found on our website
www.brainboxes.com

Hardware Specifications: SW-005



Hardware Specifications: SW-5XX

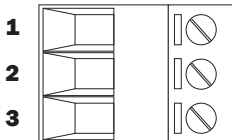


Connecting device

All SW devices can be connected to any power supply providing at least 1.1 Watts of power at +5VDC to +30VDC. Alternatively PW-600 and PW-650 are optional power supplies that enable the device to be plugged into a standard power socket or powered via USB.

SW-005:

The three pin power terminal block is removable. Power LED will light green when correctly connected.



PIN	FUNCTION
1	+V Power
2	-V Power
3	Functional Earth

SW-5XX:

The black numbered power terminal block is removable. Two separate sets of power supply inputs terminals are provided, one to +VA and -V and the other to +VB and -V. This provides redundancy; the second power supply automatically takes over in the event of a failure of the first one. If only one power supply is connected then the negative must be connected to one of the -V pairs. The positive can be connected to either the +VA or +VB pins. Power LED will light green when correctly connected.

PIN	FUNCTION
1	-V
2	+VA
3	+VB
4	-V
5	Functional Earth

Mag Jack LEDs

All Ethernet ports are Auto MDIX and so straight through or crossover Ethernet cables can be used to connect to your Ethernet devices.

Link/Activity LED	Solid green	Connection established
	Flashing Green	Data communication
Speed LED (SW-005 & SW-504)	Green	100Base-Tx
	Unlit	10Base-T

Contact Us

Brainboxes Limited

18 Hurricane Drive,
Liverpool International Business
Park,
Speke,
Liverpool Merseyside L24 8RL,
United Kingdom

Tel: +44 (0)151 220 2500

Fax: +44 (0)151 252 0446

Email: sales@brainboxes.com

Web: www.brainboxes.com

Brainboxes LLC

4500 140th Avenue
North
Suite 101, Clearwater
FL 33762 , USA

Tel: +1 (855) 958 2502

Toll Free Fax: +1 (888) 958 5538

Brainboxes Japan

8-26-5-506
Kameido, Koto-ku,
Tokyo, Japan

Tel: +81-3-3683-0509

Fax: +81-3-3683-0509

 www.brainboxes.com