



TEST REPORT

Report No.: ANT2304110005-010

Page 1 of 27

Applicant : Honsenn Technology Co.Ltd
Address : No.70, Erheng Road, wentang zhuangyao industrial zone, Dongcheng district, Dongguan City, Guangdong Province.
Manufacturer's name : Honsenn Technology Co.Ltd
Address : No.70, Erheng Road, wentang zhuangyao industrial zone, Dongcheng district, Dongguan City, Guangdong Province.


Report on the submitted samples said to be:

Sample Name : Bluetooth Headphones
Trade Mark : N/A
Tested Style No. : HS-BNE909
Series models : N/A
Sample reception time : April 11, 2023
Testing Period : April 11, 2023 ~ April 18, 2023
Test request : With reference to RoHS Directive (EU) 2015/863 amending Annex II to Directive 2011/65/EU.
Test method : Please refer to next page(s).
Results : Please refer to next page(s).

CONCLUSION

A. According to the customer's request, based on the performed tests on submitted sample, the result of Lead, Cadmium, Mercury, Hexavalent Chromium, PBBs, PBDEs, Dibutyl Phthalate (DBP), Benzyl butyl Phthalate (BBP), Bis(2-ethylhexyl) Phthalate (DEHP), Diisobutyl phthalate (DIBP) content comply with the limit as set of RoHS Directive (EU) 2015/863 amending Annex II to Directive 2011/65/EU.

Redact By Yetta
 Yetta
 Issued By Yinon
 Yinon



Reviewed By Sophia
 Sophia

Date of issue April 27, 2023



TEST REPORT

Report No.: ANT2304110005-010

Page 2 of 27

Results:

A. EU RoHS Directive 2011/65/EU

Part No.	Sample Description	Test item	XRF Result	Chemical Test (mg/kg)	Conclusion
1	Black soft leather	Pb	BL	/	Pass
		Cd	BL	/	
		Hg	BL	/	
		Cr(Cr(VI))▼	BL	/	
		Br(PBBs&PBDEs)▼	BL	/	
		DBP	/	N.D.	
		BBP	/	N.D.	
		DEHP	/	N.D.	
2	Silver sheet	Pb	BL	/	Pass
		Cd	BL	/	
		Hg	BL	/	
		Cr(Cr(VI))▼	BL	/	
		Br(PBBs&PBDEs)▼	BL	N.D.	
		DBP	/	/	
		BBP	/	/	
		DEHP	/	/	
3	Black sponge strip	Pb	BL	/	Pass
		Cd	BL	/	
		Hg	BL	/	
		Cr(Cr(VI))▼	BL	/	
		Br(PBBs&PBDEs)▼	BL	/	
		DBP	/	N.D.	
		BBP	/	N.D.	
		DEHP	/	N.D.	
4	White sponge strip	Pb	BL	/	Pass
		Cd	BL	/	
		Hg	BL	/	
		Cr(Cr(VI))▼	BL	/	
		Br(PBBs&PBDEs)▼	BL	/	
		DBP	/	N.D.	
		BBP	/	N.D.	
		DEHP	/	N.D.	
DIBP	/	N.D.			



TEST REPORT

Report No.: ANT2304110005-010

Page 3 of 27

Part No.	Sample Description	Test item	XRF Result	Chemical Test (mg/kg)	Conclusion
5	Black hard plastic	Pb	BL	/	Pass
		Cd	BL	/	
		Hg	BL	/	
		Cr(Cr(VI))▼	BL	/	
		Br(PBBs&PBDEs)▼	BL	/	
		DBP	/	N.D.	
		BBP	/	N.D.	
		DEHP	/	N.D.	
6	Black hard plastic	Pb	BL	/	Pass
		Cd	BL	/	
		Hg	BL	/	
		Cr(Cr(VI))▼	BL	/	
		Br(PBBs&PBDEs)▼	BL	/	
		DBP	/	N.D.	
		BBP	/	N.D.	
		DEHP	/	N.D.	
7	Black leather	Pb	BL	/	Pass
		Cd	BL	/	
		Hg	BL	/	
		Cr(Cr(VI))▼	BL	/	
		Br(PBBs&PBDEs)▼	BL	/	
		DBP	/	N.D.	
		BBP	/	N.D.	
		DEHP	/	N.D.	
8	Blue sponge	Pb	BL	/	Pass
		Cd	BL	/	
		Hg	BL	/	
		Cr(Cr(VI))▼	BL	/	
		Br(PBBs&PBDEs)▼	BL	/	
		DBP	/	N.D.	
		BBP	/	N.D.	
		DEHP	/	N.D.	
		DIBP	/	N.D.	



TEST REPORT

Report No.: ANT2304110005-010

Page 4 of 27

Part No.	Sample Description	Test item	XRF Result	Chemical Test (mg/kg)	Conclusion
9	Black sponge	Pb	BL	/	Pass
		Cd	BL	/	
		Hg	BL	/	
		Cr(Cr(VI))▼	BL	/	
		Br(PBBs&PBDEs)▼	BL	/	
		DBP	/	N.D.	
		BBP	/	N.D.	
		DEHP	/	N.D.	
10	White transparent plastic	Pb	BL	/	Pass
		Cd	BL	/	
		Hg	BL	/	
		Cr(Cr(VI))▼	BL	/	
		Br(PBBs&PBDEs)▼	BL	/	
		DBP	/	N.D.	
		BBP	/	N.D.	
		DEHP	/	N.D.	
11	Black cloth	Pb	BL	/	Pass
		Cd	BL	/	
		Hg	BL	/	
		Cr(Cr(VI))▼	X	N.D.	
		Br(PBBs&PBDEs)▼	BL	/	
		DBP	/	N.D.	
		BBP	/	N.D.	
		DEHP	/	N.D.	
12	Black hard plastic	Pb	BL	/	Pass
		Cd	BL	/	
		Hg	BL	/	
		Cr(Cr(VI))▼	BL	/	
		Br(PBBs&PBDEs)▼	BL	/	
		DBP	/	N.D.	
		BBP	/	N.D.	
		DEHP	/	N.D.	
DIBP	/	N.D.			



TEST REPORT

Report No.: ANT2304110005-010

Page 5 of 27

Part No.	Sample Description	Test item	XRF Result	Chemical Test (mg/kg)	Conclusion
13	Black hard plastic	Pb	BL	/	Pass
		Cd	BL	/	
		Hg	BL	/	
		Cr(Cr(VI))▼	BL	/	
		Br(PBBs&PBDEs)▼	BL	/	
		DBP	/	N.D.	
		BBP	/	N.D.	
		DEHP	/	N.D.	
14	Black hard plastic	Pb	BL	/	Pass
		Cd	BL	/	
		Hg	BL	/	
		Cr(Cr(VI))▼	BL	/	
		Br(PBBs&PBDEs)▼	BL	/	
		DBP	/	N.D.	
		BBP	/	N.D.	
		DEHP	/	N.D.	
15	Blue sponge	Pb	BL	/	Pass
		Cd	BL	/	
		Hg	BL	/	
		Cr(Cr(VI))▼	BL	/	
		Br(PBBs&PBDEs)▼	BL	/	
		DBP	/	N.D.	
		BBP	/	N.D.	
		DEHP	/	N.D.	
16	White baseband	Pb	BL	/	Pass
		Cd	BL	/	
		Hg	BL	/	
		Cr(Cr(VI))▼	BL	/	
		Br(PBBs&PBDEs)▼	X	N.D.	
		DBP	/	N.D.	
		BBP	/	N.D.	
		DEHP	/	N.D.	
DIBP	/	N.D.			



TEST REPORT

Report No.: ANT2304110005-010

Page 6 of 27

Part No.	Sample Description	Test item	XRF Result	Chemical Test (mg/kg)	Conclusion
17	Black mesh	Pb	BL	/	Pass
		Cd	BL	/	
		Hg	BL	/	
		Cr(Cr(VI))▼	BL	/	
		Br(PBBs&PBDEs)▼	BL	/	
		DBP	/	N.D.	
		BBP	/	N.D.	
		DEHP	/	N.D.	
18	Black plastic key	Pb	BL	/	Pass
		Cd	BL	/	
		Hg	BL	/	
		Cr(Cr(VI))▼	BL	/	
		Br(PBBs&PBDEs)▼	BL	/	
		DBP	/	N.D.	
		BBP	/	N.D.	
		DEHP	/	N.D.	
19	White plastic key	Pb	BL	/	Pass
		Cd	BL	/	
		Hg	BL	/	
		Cr(Cr(VI))▼	BL	/	
		Br(PBBs&PBDEs)▼	BL	/	
		DBP	/	N.D.	
		BBP	/	N.D.	
		DEHP	/	N.D.	
20	Black hard plastic	Pb	BL	/	Pass
		Cd	BL	/	
		Hg	BL	/	
		Cr(Cr(VI))▼	BL	/	
		Br(PBBs&PBDEs)▼	BL	/	
		DBP	/	N.D.	
		BBP	/	N.D.	
		DEHP	/	N.D.	
DIBP	/	N.D.			



TEST REPORT

Report No.: ANT2304110005-010

Page 7 of 27

Part No.	Sample Description	Test item	XRF Result	Chemical Test (mg/kg)	Conclusion
21	White plastic film	Pb	BL	/	Pass
		Cd	BL	/	
		Hg	BL	/	
		Cr(Cr(VI))▼	BL	/	
		Br(PBBs&PBDEs)▼	BL	/	
		DBP	/	N.D.	
		BBP	/	N.D.	
		DEHP	/	N.D.	
22	Copper wire	Pb	BL	/	Pass
		Cd	BL	/	
		Hg	BL	/	
		Cr(Cr(VI))▼	BL	/	
		Br(PBBs&PBDEs)▼	/	/	
		DBP	/	/	
		BBP	/	/	
		DEHP	/	/	
23	Silver sheet	Pb	BL	/	Pass
		Cd	BL	/	
		Hg	BL	/	
		Cr(Cr(VI))▼	BL	/	
		Br(PBBs&PBDEs)▼	/	/	
		DBP	/	/	
		BBP	/	/	
		DEHP	/	/	
24	Magnet	Pb	BL	/	Pass
		Cd	BL	/	
		Hg	BL	/	
		Cr(Cr(VI))▼	BL	/	
		Br(PBBs&PBDEs)▼	/	/	
		DBP	/	/	
		BBP	/	/	
		DEHP	/	/	
DIBP	/	/			



TEST REPORT

Report No.: ANT2304110005-010

Page 8 of 27

Part No.	Sample Description	Test item	XRF Result	Chemical Test (mg/kg)	Conclusion
25	Silver sheet	Pb	BL	/	Pass
		Cd	BL	/	
		Hg	BL	/	
		Cr(Cr(VI))▼	BL	/	
		Br(PBBs&PBDEs)▼	/	/	
		DBP	/	/	
		BBP	/	/	
		DEHP	/	/	
26	Silver sheet	Pb	BL	/	Pass
		Cd	BL	/	
		Hg	BL	/	
		Cr(Cr(VI))▼	X	N.D.	
		Br(PBBs&PBDEs)▼	/	/	
		DBP	/	/	
		BBP	/	/	
		DEHP	/	/	
27	Black metal screw	Pb	BL	/	Pass
		Cd	BL	/	
		Hg	BL	/	
		Cr(Cr(VI))▼	X	/	
		Br(PBBs&PBDEs)▼	/	/	
		DBP	/	/	
		BBP	/	/	
		DEHP	/	/	
28	Black soft plastic (insulated wire)	Pb	BL	/	Pass
		Cd	BL	/	
		Hg	BL	/	
		Cr(Cr(VI))▼	BL	/	
		Br(PBBs&PBDEs)▼	BL	/	
		DBP	/	N.D.	
		BBP	/	N.D.	
		DEHP	/	N.D.	
DIBP	/	N.D.			



TEST REPORT

Report No.: ANT2304110005-010

Page 9 of 27

Part No.	Sample Description	Test item	XRF Result	Chemical Test (mg/kg)	Conclusion
29	Black soft plastic (insulated wire)	Pb	BL	/	Pass
		Cd	BL	/	
		Hg	BL	/	
		Cr(Cr(VI))▼	BL	/	
		Br(PBBs&PBDEs)▼	BL	/	
		DBP	/	N.D.	
		BBP	/	N.D.	
		DEHP	/	N.D.	
30	White soft plastic (insulated wire)	Pb	BL	/	Pass
		Cd	BL	/	
		Hg	BL	/	
		Cr(Cr(VI))▼	BL	/	
		Br(PBBs&PBDEs)▼	BL	/	
		DBP	/	N.D.	
		BBP	/	N.D.	
		DEHP	/	N.D.	
31	Yellow soft plastic (insulated wire)	Pb	BL	/	Pass
		Cd	BL	/	
		Hg	BL	/	
		Cr(Cr(VI))▼	BL	/	
		Br(PBBs&PBDEs)▼	BL	/	
		DBP	/	N.D.	
		BBP	/	N.D.	
		DEHP	/	N.D.	
32	Red soft plastic (insulated wire)	Pb	BL	/	Pass
		Cd	BL	/	
		Hg	BL	/	
		Cr(Cr(VI))▼	BL	/	
		Br(PBBs&PBDEs)▼	BL	/	
		DBP	/	N.D.	
		BBP	/	N.D.	
		DEHP	/	N.D.	
		DIBP	/	N.D.	



TEST REPORT

Report No.: ANT2304110005-010

Page 10 of 27

Part No.	Sample Description	Test item	XRF Result	Chemical Test (mg/kg)	Conclusion
33	Green PCB	Pb	BL	/	Pass
		Cd	BL	/	
		Hg	BL	/	
		Cr(Cr(VI))▼	BL	/	
		Br(PBBs&PBDEs)▼	X	N.D.	
		DBP	/	N.D.	
		BBP	/	N.D.	
		DEHP	/	N.D.	
34	IC (Green PCB)	Pb	BL	/	Pass
		Cd	BL	/	
		Hg	BL	/	
		Cr(Cr(VI))▼	BL	/	
		Br(PBBs&PBDEs)▼	BL	/	
		DBP	/	N.D.	
		BBP	/	N.D.	
		DEHP	/	N.D.	
35	Black Plastic (Green PCB)	Pb	BL	/	Pass
		Cd	BL	/	
		Hg	BL	/	
		Cr(Cr(VI))▼	BL	/	
		Br(PBBs&PBDEs)▼	BL	/	
		DBP	/	N.D.	
		BBP	/	N.D.	
		DEHP	/	N.D.	
36	White Plastic (Green PCB)	Pb	BL	/	Pass
		Cd	BL	/	
		Hg	BL	/	
		Cr(Cr(VI))▼	BL	/	
		Br(PBBs&PBDEs)▼	BL	/	
		DBP	/	N.D.	
		BBP	/	N.D.	
		DEHP	/	N.D.	
		DIBP	/	N.D.	



TEST REPORT

Report No.: ANT2304110005-010

Page 11 of 27

Part No.	Sample Description	Test item	XRF Result	Chemical Test (mg/kg)	Conclusion
37	Silver Sheet metal (Green PCB)	Pb	BL	/	Pass
		Cd	BL	/	
		Hg	BL	/	
		Cr(Cr(VI))▼	BL	/	
		Br(PBBs&PBDEs)▼	/	/	
		DBP	/	/	
		BBP	/	/	
		DEHP	/	/	
38	Black plastic (switch)	Pb	BL	/	Pass
		Cd	BL	/	
		Hg	BL	/	
		Cr(Cr(VI))▼	BL	/	
		Br(PBBs&PBDEs)▼	BL	/	
		DBP	/	N.D.	
		BBP	/	N.D.	
		DEHP	/	N.D.	
39	Silver sheet metal (switch)	Pb	BL	/	Pass
		Cd	BL	/	
		Hg	BL	/	
		Cr(Cr(VI))▼	X	N.D.	
		Br(PBBs&PBDEs)▼	/	/	
		DBP	/	/	
		BBP	/	/	
		DEHP	/	/	
40	Silver metal pin (switch)	Pb	BL	/	Pass
		Cd	BL	/	
		Hg	BL	/	
		Cr(Cr(VI))▼	BL	/	
		Br(PBBs&PBDEs)▼	/	/	
		DBP	/	/	
		BBP	/	/	
		DEHP	/	/	
DIBP	/	/			



TEST REPORT

Report No.: ANT2304110005-010

Page 12 of 27

Part No.	Sample Description	Test item	XRF Result	Chemical Test (mg/kg)	Conclusion
41	Black Plastic (Light touch switch)	Pb	BL	/	Pass
		Cd	BL	/	
		Hg	BL	/	
		Cr(Cr(VI))▼	BL	/	
		Br(PBBs&PBDEs)▼	BL	/	
		DBP	/	N.D.	
		BBP	/	N.D.	
		DEHP	/	N.D.	
42	Silver sheet metal (touch switch)	Pb	BL	/	Pass
		Cd	BL	/	
		Hg	BL	/	
		Cr(Cr(VI))▼	BL	/	
		Br(PBBs&PBDEs)▼	/	/	
		DBP	/	/	
		BBP	/	/	
		DEHP	/	/	
43	White Plastic (Light touch switch)	Pb	BL	/	Pass
		Cd	BL	/	
		Hg	BL	/	
		Cr(Cr(VI))▼	BL	/	
		Br(PBBs&PBDEs)▼	BL	/	
		DBP	/	N.D.	
		BBP	/	N.D.	
		DEHP	/	N.D.	
44	Patch triode (Green PCB)	Pb	BL	/	Pass
		Cd	BL	/	
		Hg	BL	/	
		Cr(Cr(VI))▼	BL	/	
		Br(PBBs&PBDEs)▼	BL	/	
		DBP	/	N.D.	
		BBP	/	N.D.	
		DEHP	/	N.D.	
		DIBP	/	N.D.	



TEST REPORT

Report No.: ANT2304110005-010

Page 13 of 27

Part No.	Sample Description	Test item	XRF Result	Chemical Test (mg/kg)	Conclusion
45	Silver Sheet metal (Green PCB)	Pb	BL	/	Pass
		Cd	BL	/	
		Hg	BL	/	
		Cr(Cr(VI))▼	X	N.D.	
		Br(PBBs&PBDEs)▼	/	/	
		DBP	/	/	
		BBP	/	/	
		DEHP	/	/	
		DIBP	/	/	
46	Black Plastic (Green PCB)	Pb	BL	/	Pass
		Cd	BL	/	
		Hg	BL	/	
		Cr(Cr(VI))▼	BL	/	
		Br(PBBs&PBDEs)▼	BL	/	
		DBP	/	N.D.	
		BBP	/	N.D.	
		DEHP	/	N.D.	
		DIBP	/	N.D.	
47	Silver Metal Pin (Green PCB)	Pb	BL	/	Pass
		Cd	BL	/	
		Hg	BL	/	
		Cr(Cr(VI))▼	X	N.D.	
		Br(PBBs&PBDEs)▼	/	/	
		DBP	/	/	
		BBP	/	/	
		DEHP	/	/	
		DIBP	/	/	
48	Diode (Green PCB)	Pb	BL	/	Pass
		Cd	BL	/	
		Hg	BL	/	
		Cr(Cr(VI))▼	BL	/	
		Br(PBBs&PBDEs)▼	BL	/	
		DBP	/	N.D.	
		BBP	/	N.D.	
		DEHP	/	N.D.	
		DIBP	/	N.D.	



TEST REPORT

Report No.: ANT2304110005-010

Page 14 of 27

Part No.	Sample Description	Test item	XRF Result	Chemical Test (mg/kg)	Conclusion
49	IC (Green PCB)	Pb	BL	/	Pass
		Cd	BL	/	
		Hg	BL	/	
		Cr(Cr(VI))▼	BL	/	
		Br(PBBs&PBDEs)▼	BL	/	
		DBP	/	N.D.	
		BBP	/	N.D.	
		DEHP	/	N.D.	
50	Crystal oscillator (Green PCB)	Pb	BL	/	Pass
		Cd	BL	/	
		Hg	BL	/	
		Cr(Cr(VI))▼	BL	/	
		Br(PBBs&PBDEs)▼	/	/	
		DBP	/	/	
		BBP	/	/	
		DEHP	/	/	
51	IC (Green PCB)	Pb	BL	/	Pass
		Cd	BL	/	
		Hg	BL	/	
		Cr(Cr(VI))▼	BL	/	
		Br(PBBs&PBDEs)▼	BL	/	
		DBP	/	N.D.	
		BBP	/	N.D.	
		DEHP	/	N.D.	
52	Green PCB	Pb	BL	/	Pass
		Cd	BL	/	
		Hg	BL	/	
		Cr(Cr(VI))▼	BL	/	
		Br(PBBs&PBDEs)▼	X	N.D.	
		DBP	/	N.D.	
		BBP	/	N.D.	
		DEHP	/	N.D.	
DIBP	/	N.D.			



TEST REPORT

Report No.: ANT2304110005-010

Page 15 of 27

Part No.	Sample Description	Test item	XRF Result	Chemical Test (mg/kg)	Conclusion
53	White Plastic (Green PCB)	Pb	BL	/	Pass
		Cd	BL	/	
		Hg	BL	/	
		Cr(Cr(VI))▼	BL	/	
		Br(PBBs&PBDEs)▼	BL	/	
		DBP	/	N.D.	
		BBP	/	N.D.	
		DEHP	/	N.D.	
54	IC (Green PCB)	Pb	BL	/	Pass
		Cd	BL	/	
		Hg	BL	/	
		Cr(Cr(VI))▼	BL	/	
		Br(PBBs&PBDEs)▼	BL	/	
		DBP	/	N.D.	
		BBP	/	N.D.	
		DEHP	/	N.D.	
DIBP	/	N.D.			



TEST REPORT

Report No.: ANT2304110005-010

Page 16 of 27

Note:

(1) Results were obtained by XRF for primary screening, and further chemical testing by ICP (for Cd, Pb, Hg), UV-Vis (for Cr(VI)) and GC-MS (for PBBs, PBDEs) are recommended to be performed, if the concentration exceeds the below warning value according to IEC 62321-3-1:2013.

Element	Unit	Non-metal	Metal	Composite Material
Cd	mg/kg	BL≤70-3σ<X <130+3σ≤OL	BL≤70-3σ<X <130+3σ≤OL	BL≤50-3σ<X <150+3σ≤OL
Pb	mg/kg	BL≤700-3σ<X <1300+3σ≤OL	BL≤700-3σ<X <1300+3σ≤OL	BL≤500-3σ<X <1500+3σ≤OL
Hg	mg/kg	BL≤700-3σ<X <1300+3σ≤OL	BL≤700-3σ<X <1300+3σ≤OL	BL≤500-3σ<X <1500+3σ≤OL
Cr	mg/kg	BL≤700-3σ<X	BL≤700-3σ<X	BL≤500-3σ<X
Br	mg/kg	BL≤300-3σ<X	--	BL≤250-3σ<X

BL = Below Limit
 OL = Over Limit
 X = Inconclusive

- (2) The XRF screening test for RoHS elements - The reading may be different to the actual content in the sample be of non-uniformity composition.
- (3) The maximum permissible limit is quoted from the document 2015/863/EC amending RoHS directive 2011/65/EU.
- (4) ▼=For restricted substances PBBs and PBDEs, the results show the total Br content; The restricted substance was Cr (VI), and the results showed the total Cr content.

Disclaimers:

This XRF Screening report is for reference purposes only. The applicant shall make its/his/her own judgment as to whether the information provided in this XRF screening report is sufficient for its/his/her purposes.

The result shown in this XRF screening report will differ based on various factors, including but not limited to, the sample size, thickness, area, surface flatness, equipment parameters and matrix effect (e.g. plastic, rubber, metal, glass, ceramic etc.). Further wet chemical pre-treatment with relevant chemical equipment analysis are required to obtain quantitative data.



TEST REPORT

Report No.: ANT2304110005-010

Page 17 of 27

(5) Test method:

Lead (Pb) & Cadmium (Cd) Content:

With reference to IEC 62321-5:2013, by acid digestion and analysis was performed by inductively coupled plasma atomic emission spectrometer (ICP-OES)

Mercury (Hg) Content:

With reference to IEC 62321-4:2013+AMD1:2017 CSV, by acid digestion and analysis was performed by inductively coupled plasma atomic emission spectrometer (ICP-OES)

Hexavalent Chromium (Cr⁶⁺) Content:

With reference to IEC 62321-7-1:2015 or IEC 62321-7-2:2017, by alkaline digestion and analysis was performed by UV-visible spectrophotometer (UV-Vis)

PBBs & PBDEs Content:

With reference to IEC 62321-6:2015, by solvent extraction and analysis was performed by gas chromatographic-mass spectrometer (GC-MS)

DBP, BBP, DEHP, DIBP Content:

With reference to IEC 62321-8:2017, by solvent extraction and analysis was performed by gas chromatographic-mass spectrometer (GC-MS)

RoHS Restricted Substances	Unit	MDL	Maximum Concentration Value (mg/kg) (by weight in homogenous materials)
Cadmium (Cd)	mg/kg	2	100
Lead (Pb)	mg/kg	2	1000
Mercury (Hg)	mg/kg	2	1000
Hexavalent Chromium (Cr(VI))	ug/cm ² (Metal); mg/kg (Nonmetal)	0.1ug/cm ² (Metal); 8mg/kg (Nonmetal)	See below (Metal); 1000mg/kg (Nonmetal)
Polybrominated biphenyls (PBBs)	mg/kg	5	1000
Polybrominated diphenyl ethers (PBDEs)	mg/kg	5	1000
Dibutyl Phthalate (DBP)	mg/kg	50	1000
Benzyl butyl Phthalate (BBP)	mg/kg	50	1000
Bis(2-ethylhexyl) Phthalate (DEHP)	mg/kg	50	1000
Diisobutyl Phthalate (DIBP)	mg/kg	50	1000



TEST REPORT

Report No.: ANT2304110005-010

Page 18 of 27

- MDL = Method Detection Limit
- /= Not apply
- LOQ = Limit of Quantification, The LOQ of Hexavalent chromium is 0.10 $\mu\text{g}/\text{cm}^2$
- mg/kg = ppm=parts per million
- N.D.=Not Detected (<MDL or LOQ)
- a. The sample is positive for Cr (VI) if the Cr (VI) concentration is greater than 0.13 $\mu\text{g}/\text{cm}^2$. The sample coating is considered to contain Cr (VI)
- b. The sample is negative for Cr (VI) if Cr (VI) is N.D. (concentration less than 0.10 $\mu\text{g}/\text{cm}^2$). The sample coating is considered a non- Cr (VI) based coating
- c. The result between 0.10 $\mu\text{g}/\text{cm}^2$ and 0.13 $\mu\text{g}/\text{cm}^2$ is considered to be inconclusive, unavoidable coating variations may influence the determination
- #1 According to the statement provided by the customer, RoHS Directive 2011/65/EU based on ANNEX III 5(a), Lead is exempted in glass of cathode ray tubes, electronic components and fluorescent tubes.
- #2 According to the statement provided by the customer, RoHS Directive 2011/65/EU based on ANNEX III 7(c)-I, Lead is exempted in electronic ceramic or glass parts (e.g. piezo electronic devices).
- #3 According to the statement provided by the customer, RoHS directive 2011/65/EU based on ANNEX III 6(c), Lead is exempted as an alloying element in Copper containing up to 4% (4000ppm) by weight.
- #4 According to the statement provided by the customer, RoHS Directive 2011/65/EU based on ANNEX III 7(a), Lead is exempted in high melting temperature type solders (i.e. lead-based alloys containing 85 % by weight or more lead).
- #5 According to the statement provided by the customer, RoHS Directive 2011/65/EU based on ANNEX III 6(b), Lead is exempted as an alloying element in Aluminum containing up to 0.4% (4000ppm) by weight.
- #6 According to the statement provided by the customer, RoHS Directive 2011/65/EU based on ANNEX III 8(b), Cadmium and its compounds in electrical contact is exempted.
- #7 According to the statement provided by the customer, RoHS Directive 2011/65/EU based on ANNEX III 6(a), Lead is exempted in steel for machining purposes and in galvanized steel containing up to 0.35% (3500ppm) by weight.
- Flow chart appendix is included
- Photo appendix is included.



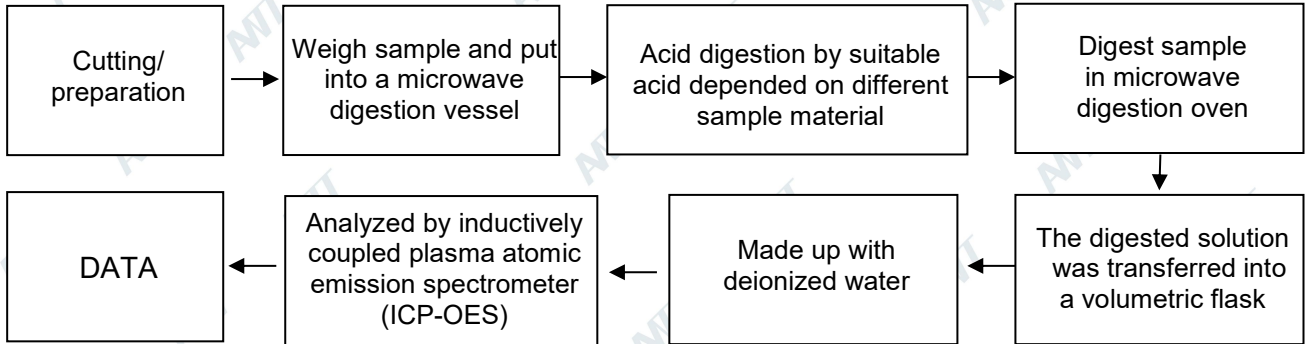
TEST REPORT

Report No.: ANT2304110005-010

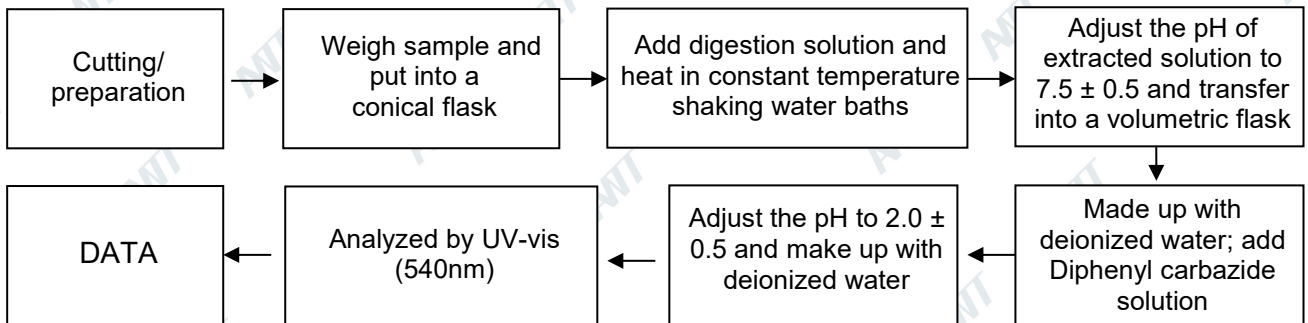
Page 19 of 27

Appendix

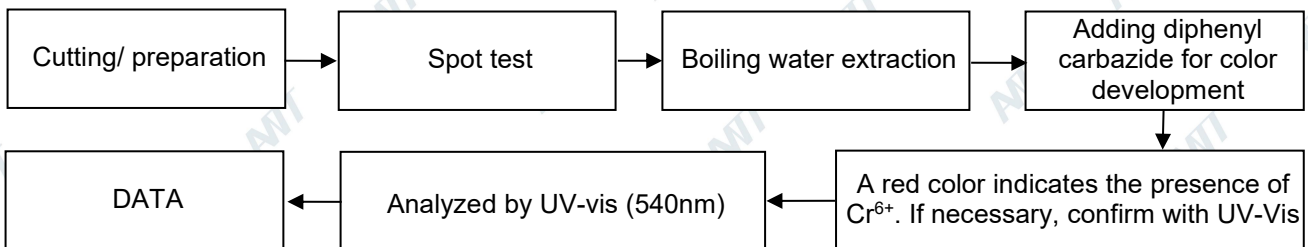
1. Test Flow chart for Cd/Pb /Hg content



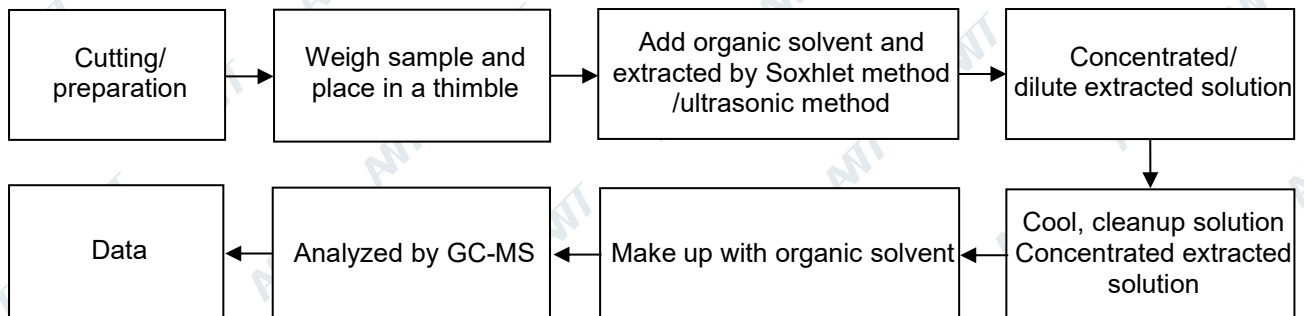
2. Test Flowchart for Cr⁶⁺ content (For non-metal material)



Test Flowchart for Cr⁶⁺ content (For metal material)



3. Test Flow chart for PBBs & PBDEs & DBP & BBP & DEHP & DIBP content





TEST REPORT

Report No.: ANT2304110005-010

Page 20 of 27

The photo of the sample





TEST REPORT

Report No.: ANT2304110005-010

Page 21 of 27





TEST REPORT

Report No.: ANT2304110005-010

Page 22 of 27

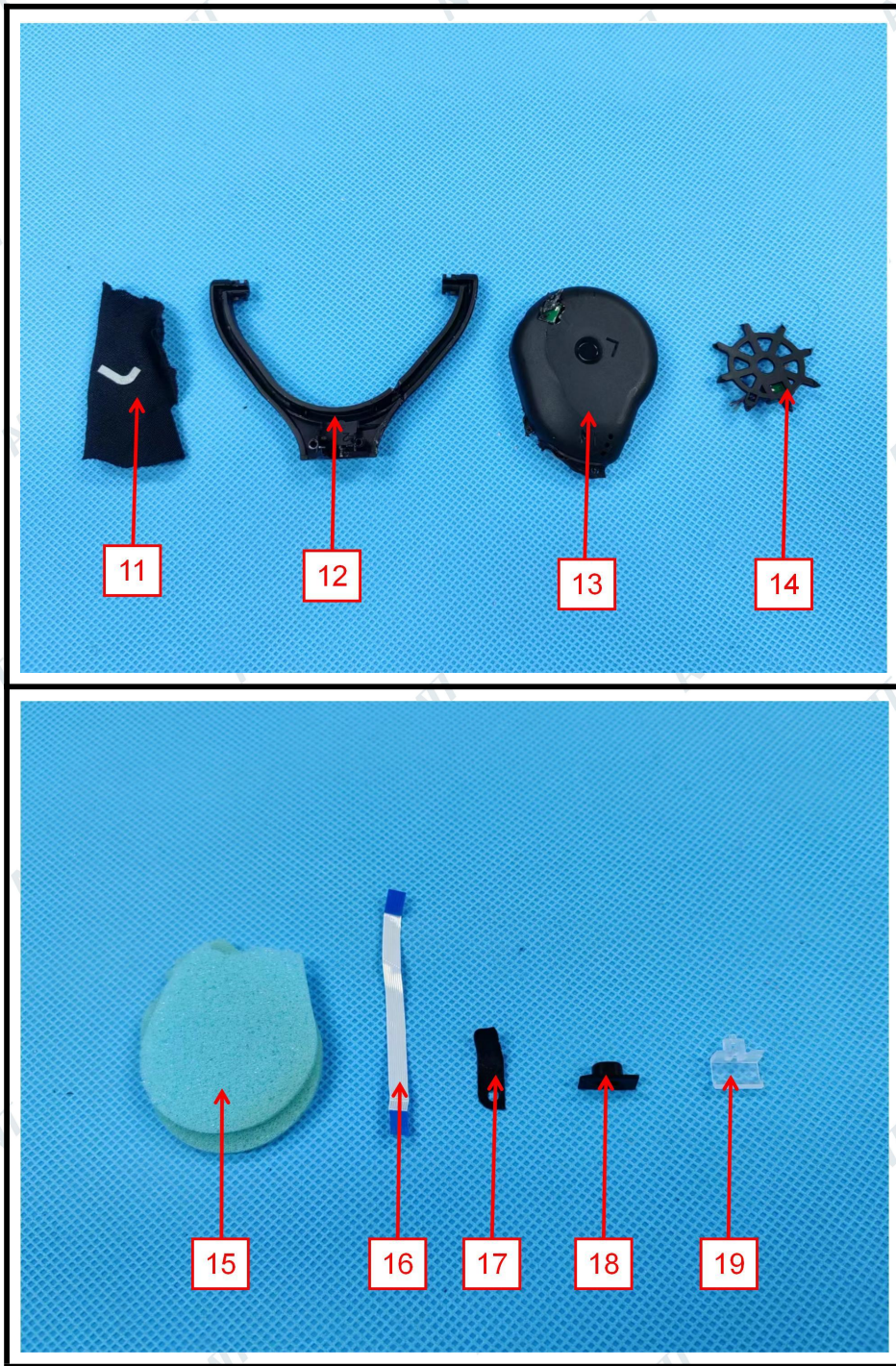




TEST REPORT

Report No.: ANT2304110005-010

Page 23 of 27

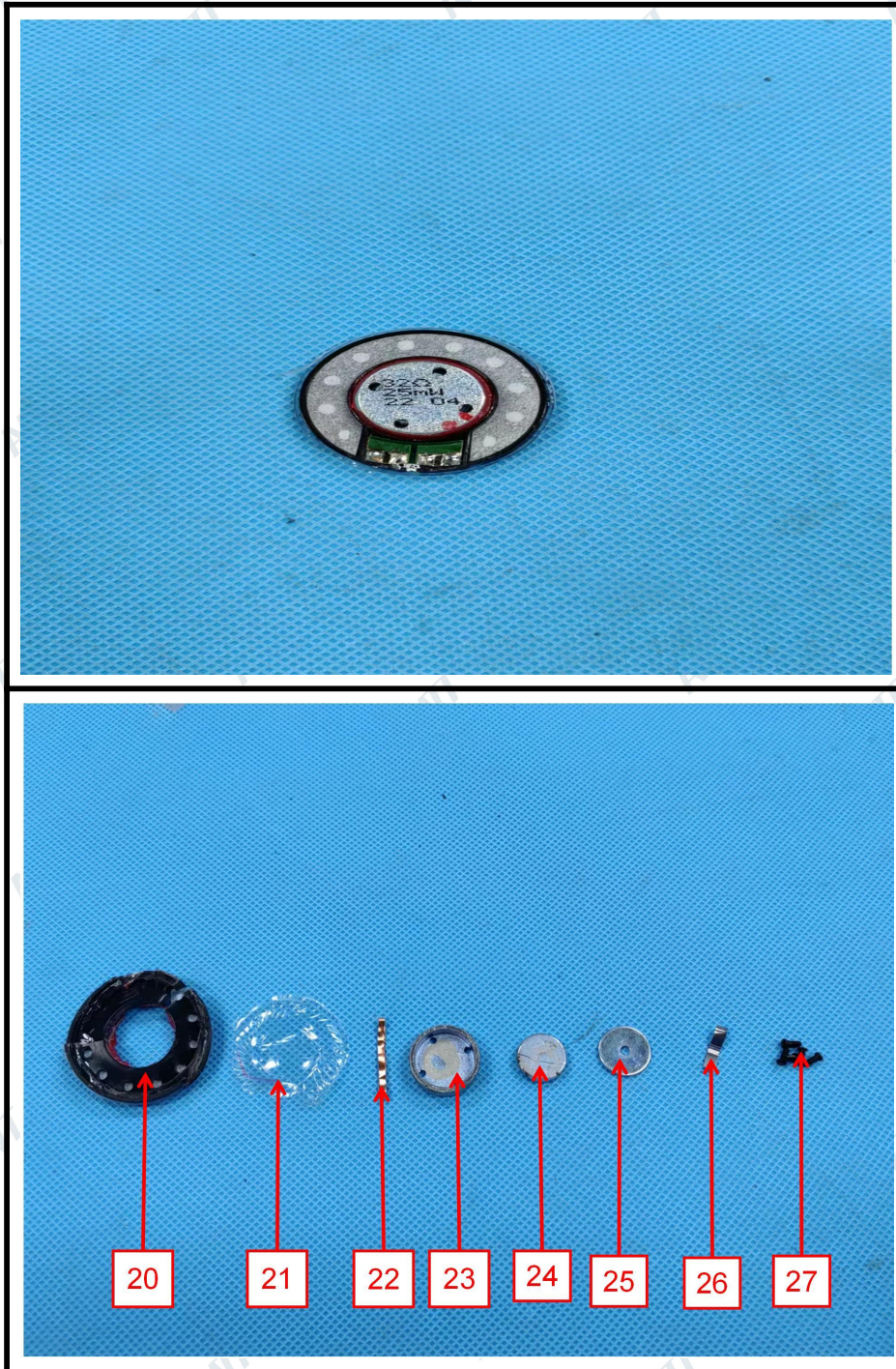




TEST REPORT

Report No.: ANT2304110005-010

Page 24 of 27

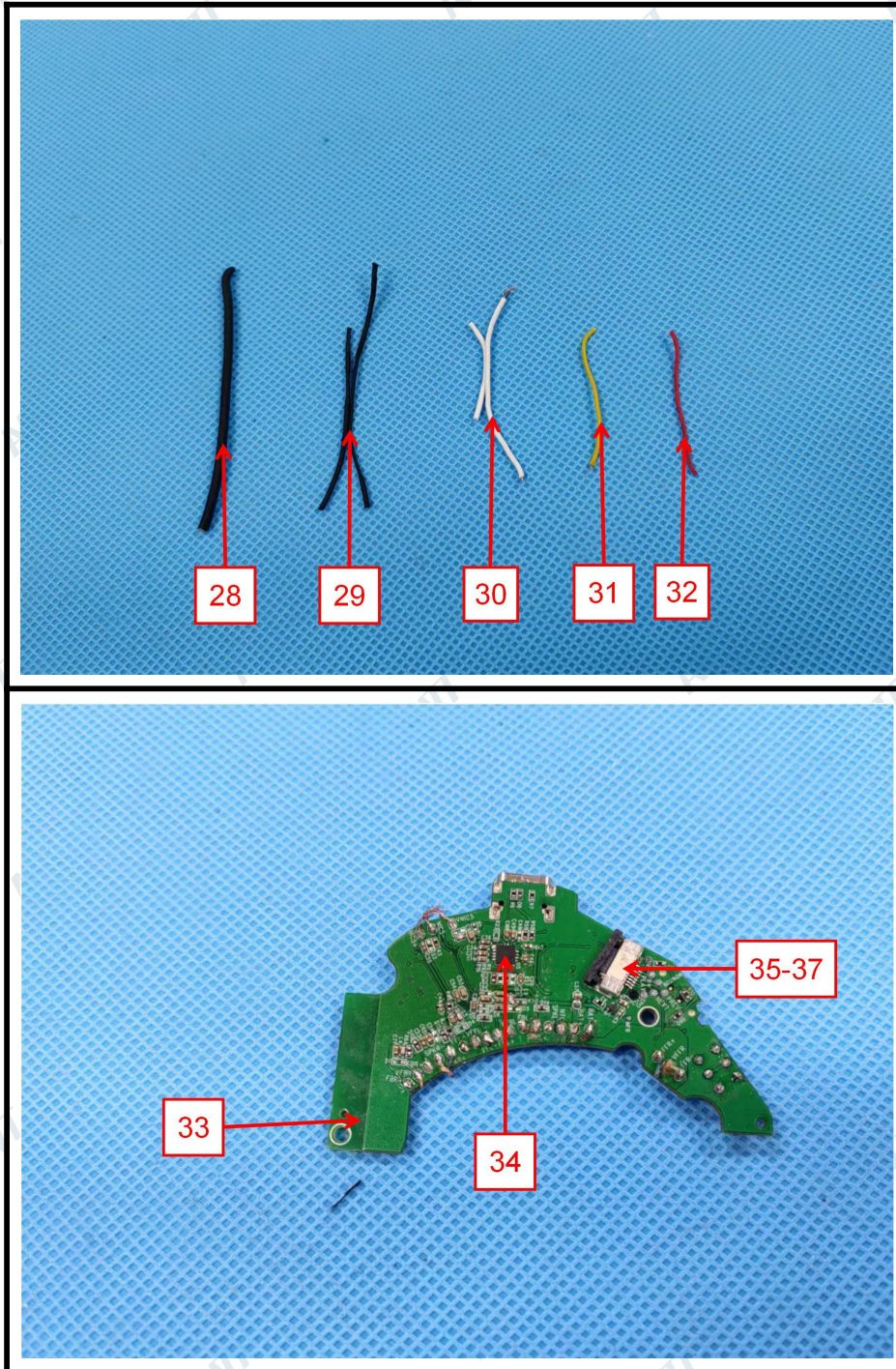




TEST REPORT

Report No.: ANT2304110005-010

Page 25 of 27

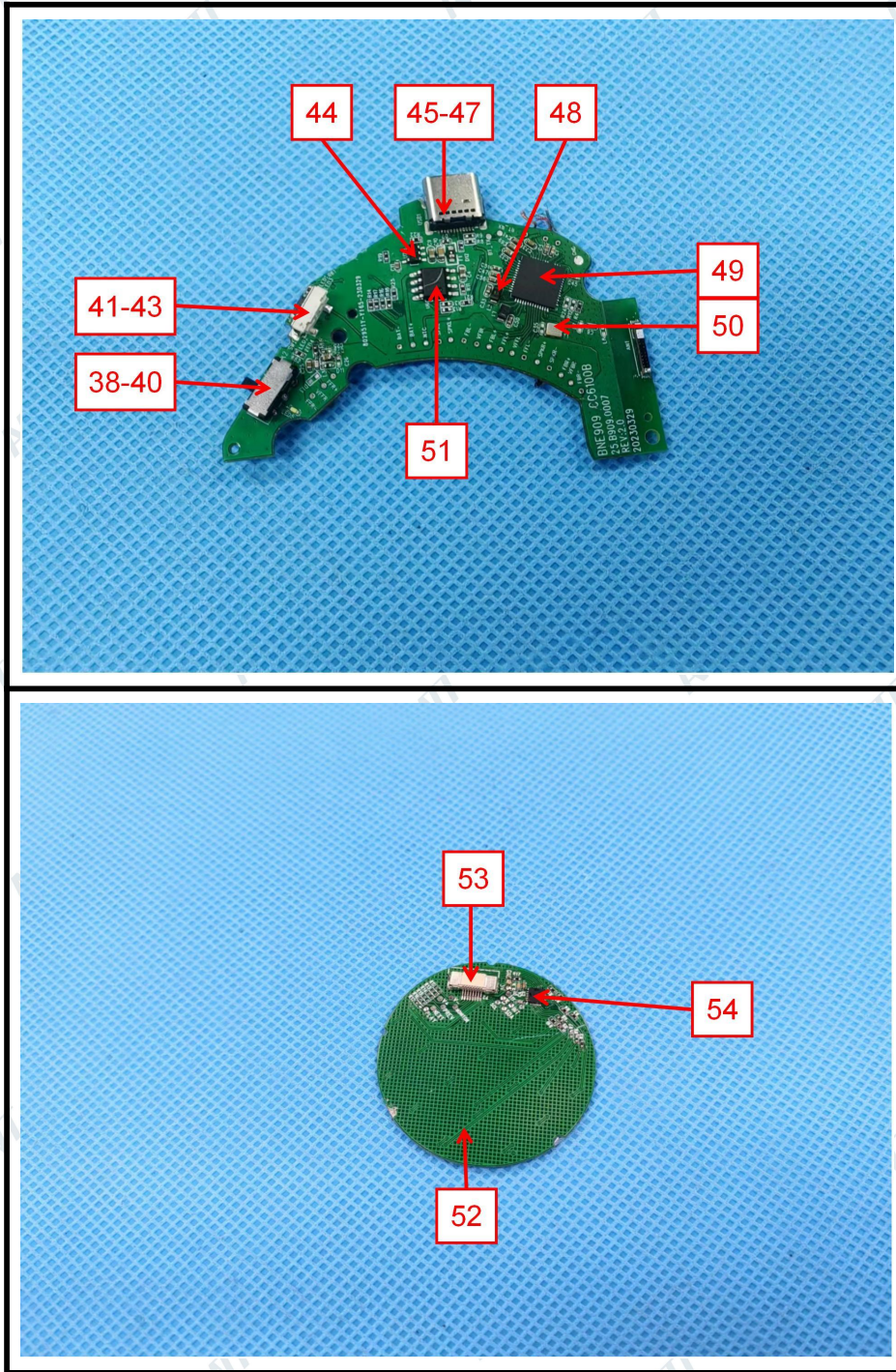




TEST REPORT

Report No.: ANT2304110005-010

Page 26 of 27



ANT authenticate the photo on original report only



TEST REPORT

Report No.: ANT2304110005-010

Page 27 of 27

Statement:

1. The test report is considered invalidated without approval signature, special seal on the perforation.
2. The result(s) shown in this report refer only to the sample(s) tested.
3. Without written approval of ANT, this report can't be reproduced except in full.
4. The sample(s) and sample information was/were provided by the client who should be responsible for the authenticity which ANT hasn't verified.
5. In case of any discrepancy between the English version and Chinese version of the testing reports(if generated), the Chinese version shall prevail.

*** End of Report ***