

Windows 10 IoT Enterprise LTSC 2021

Deployment Guide



Notes, cautions, and warnings

 **NOTE:** A NOTE indicates important information that helps you make better use of your product.

 **CAUTION:** A CAUTION indicates either potential damage to hardware or loss of data and tells you how to avoid the problem.

 **WARNING:** A WARNING indicates a potential for property damage, personal injury, or death.

Contents

Chapter 1: Introduction.....	4
Support matrix.....	4
Chapter 2: DellApplicationStore Installation Instructions.....	5
Manual Installation using DellApplicationStore.exe installer file	5
Silent Manual Installation Using DellApplicationStore.exe Installer File.....	9
DellApplicationStore.exe installation procedure from Wyse Management Suite.....	13
Installation procedure through Microsoft Endpoint Configuration Manager.....	14
Client Side:.....	14
Server side:.....	14
Chapter 3: Deploying security patches for Windows 10 IoT Enterprise LTSC 2021.....	16
Download Knowledge Base for Windows 10 IoT Enterprise LTSC 2021 from Microsoft Update Catalog...	16
Install the MSU or EXE package using Wyse Management Suite.....	16

Introduction

This document provides information about installing Dell Application Store and deploying Microsoft Security Patches for Windows 10 IoT Enterprise LTSC 2021.

Dell Application Store is a bundle of Edge Device software consisting of third-party applications and Dell value-added applications. This document introduces different procedures for installing Dell Application Store on the thin clients running Windows 10 IoT Enterprise LTSC 2021 operating system.

Microsoft offers important, recommended, and optional updates. The updates provide significant benefits, such as improved security and reliability. This document is intended to download applicable security patches and create and deploy a Microsoft update stand-alone package (.msu package) or an executable (.exe package) using Wyse Management Suite.

Topics:

- [Support matrix](#)

Support matrix

Operating system	Supported platforms
Windows 10 IoT Enterprise LTSC 2021	OptiPlex 3000 Thin Client

Table 1. Management server details

Management server	Version
Wyse Management Suite	3.6 and later versions

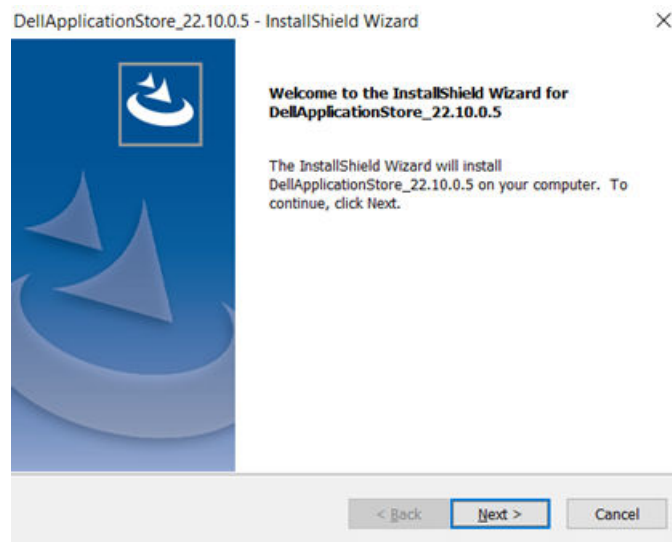
DellApplicationStore Installation Instructions

Topics:

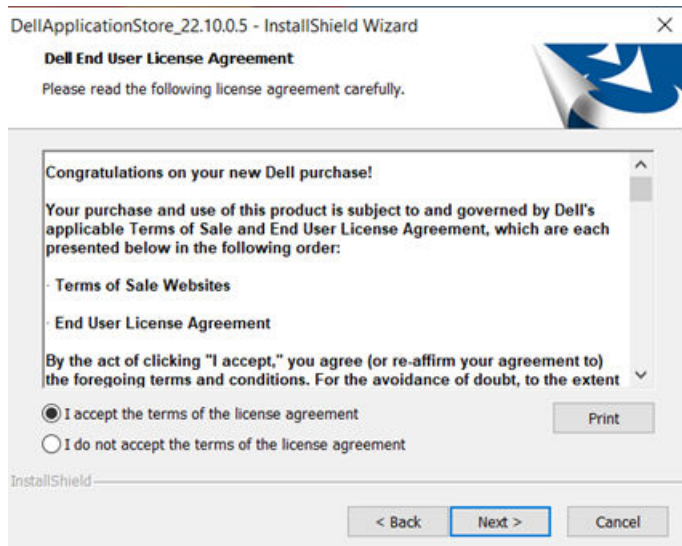
- Manual Installation using DellApplicationStore.exe installer file
- Silent Manual Installation Using DellApplicationStore.exe Installer File
- DellApplicationStore.exe installation procedure from Wyse Management Suite
- Installation procedure through Microsoft Endpoint Configuration Manager

Manual Installation using DellApplicationStore.exe installer file

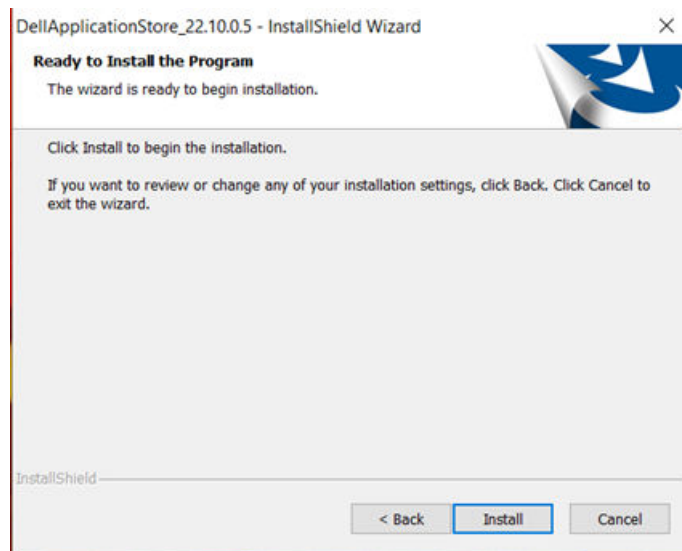
1. Log in to the device as admin and disable the **Unified Write Filter**.
2. Copy the DellApplicationStore.exe installer file to the local path, that is, C:\Users\Admin\Desktop.
3. Run the DellApplicationStore.exe as administrator and click **Next** to continue.



4. Read the **Dell End User Licensing Agreement**. Select **I accept the terms of the license agreement** and click on **Next**.



5. Click on **Install**.



6. Once all the files are extracted, select the applications along with the default applications that you want to install. Click **License Agreement(s)**.

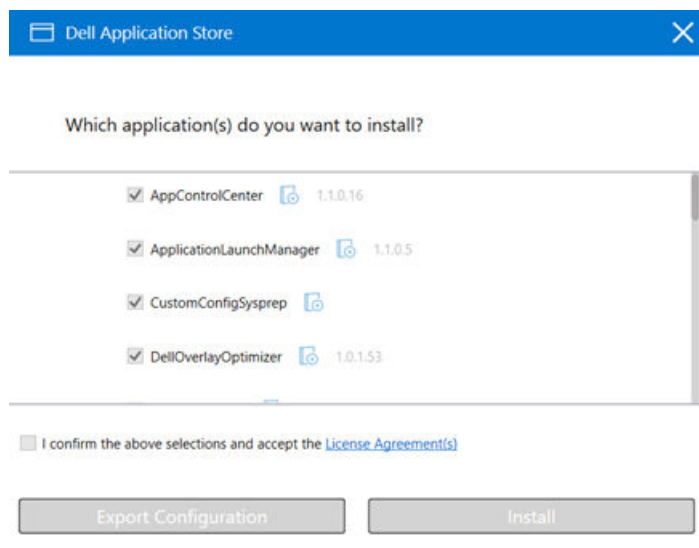


Figure 1. Dell Application Store

7. Read each **End User Licensing Agreement** and Click **Agree All**.

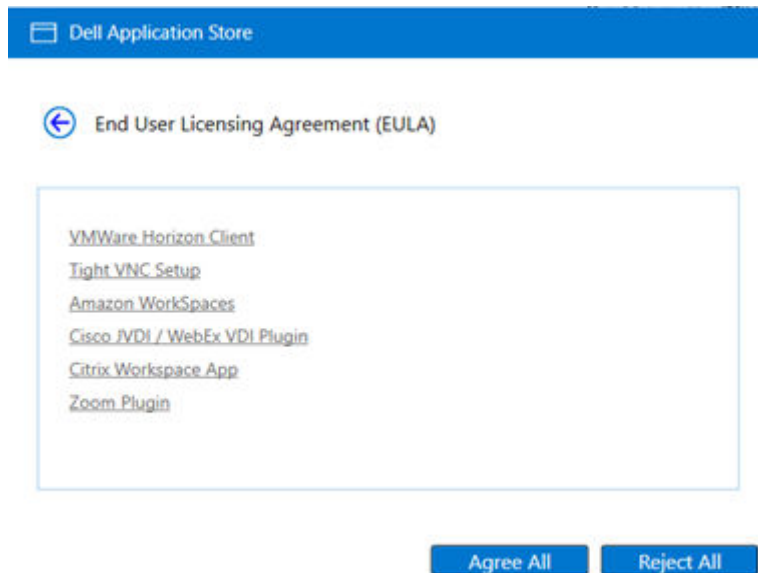
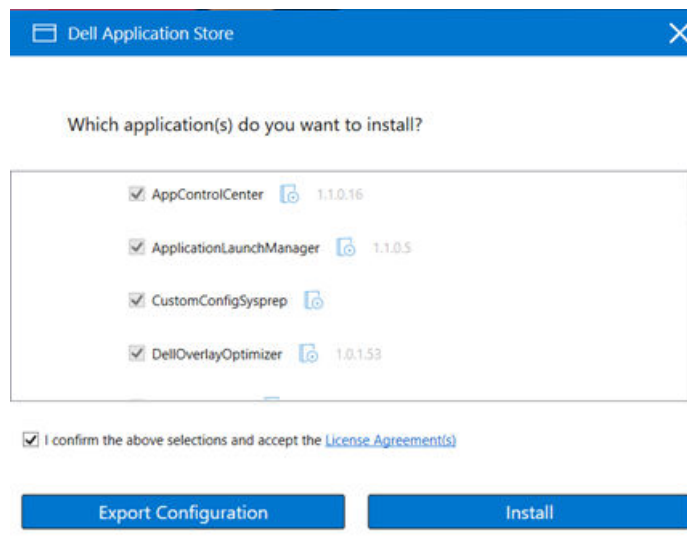


Figure 2. End User Licensing Agreement

8. Check the box to the message **I Confirm the above selections and agree to the License Agreement** and click **Install**.



9. Installation starts and the progress of installation is shown as below.

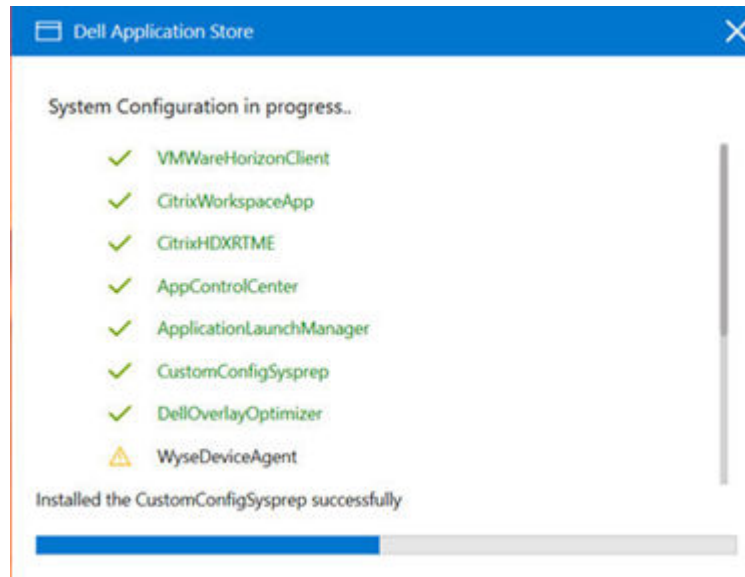
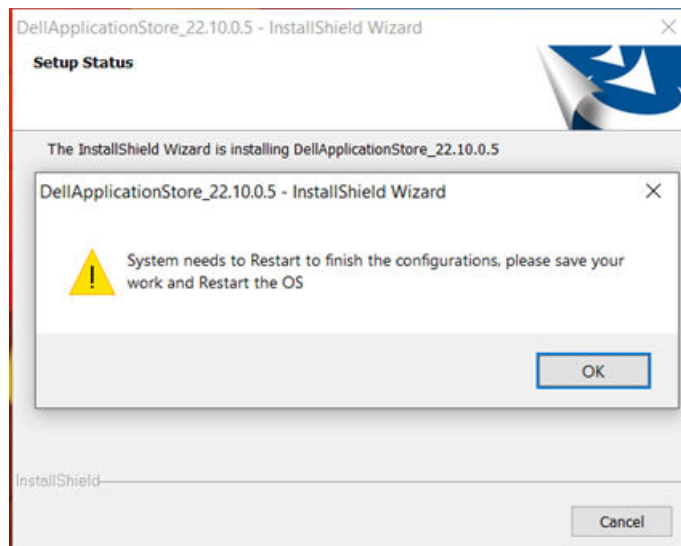


Figure 3. Progress of Installation

10. After the installation is complete, click **OK** on Restart the operating system message box.



11. Now click **Finish** and restart the device.

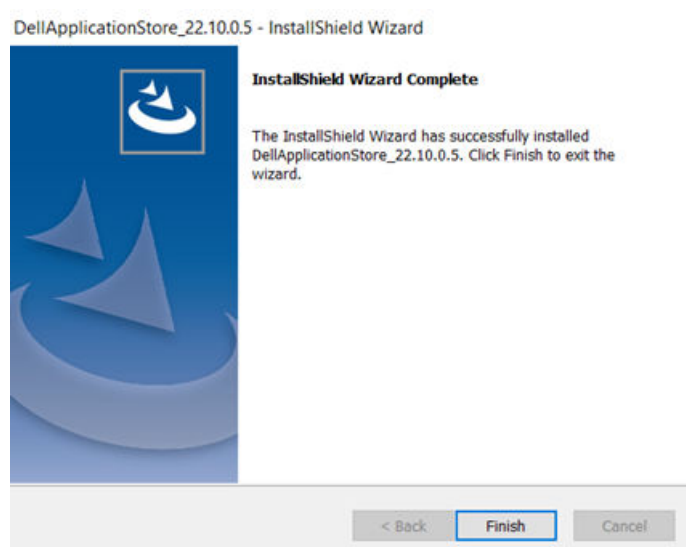
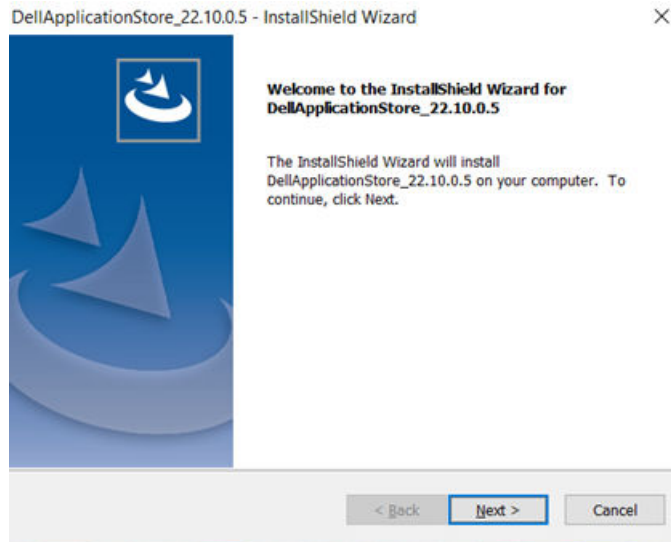


Figure 4. Restart Notification

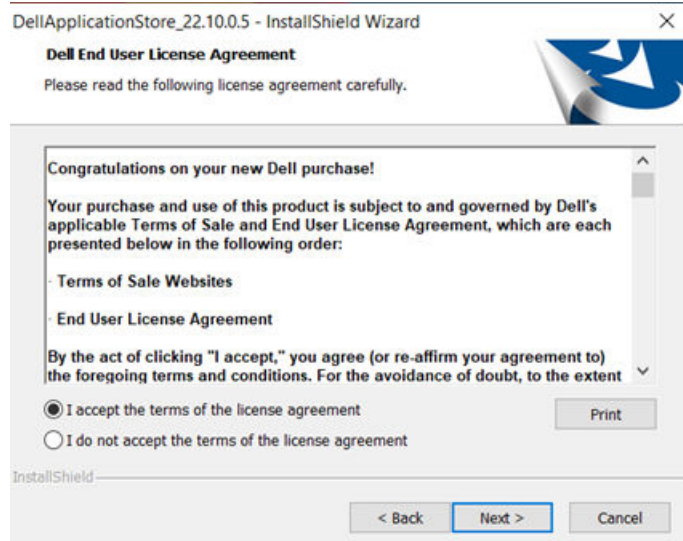
12. Log in to the admin account and enable the **Unified Write Filter**.

Silent Manual Installation Using DellApplicationStore.exe Installer File

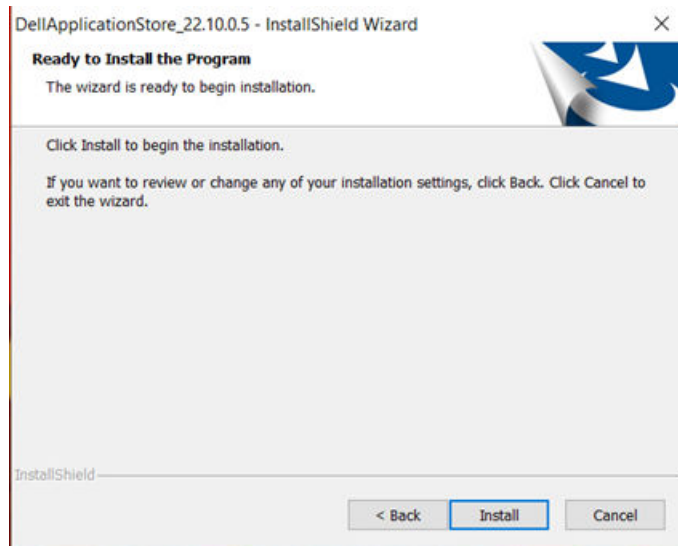
1. Log in to the device as administrator and disable the **Unified Write Filter**.
2. Copy the DellApplicationStore.exe installer file to local path, that is, C:\Users\Admin\Desktop.
3. Run the DellApplicationStore.exe as administrator and click **Next** to continue.



4. Read the **Dell End User Licensing Agreement**. Select **I accept the terms of the license agreement** and click on **Next**.



5. Click on **Install**.



6. Once all the files are extracted, select the applications along with the default applications that you want to install. Click **License Agreement(s)**.

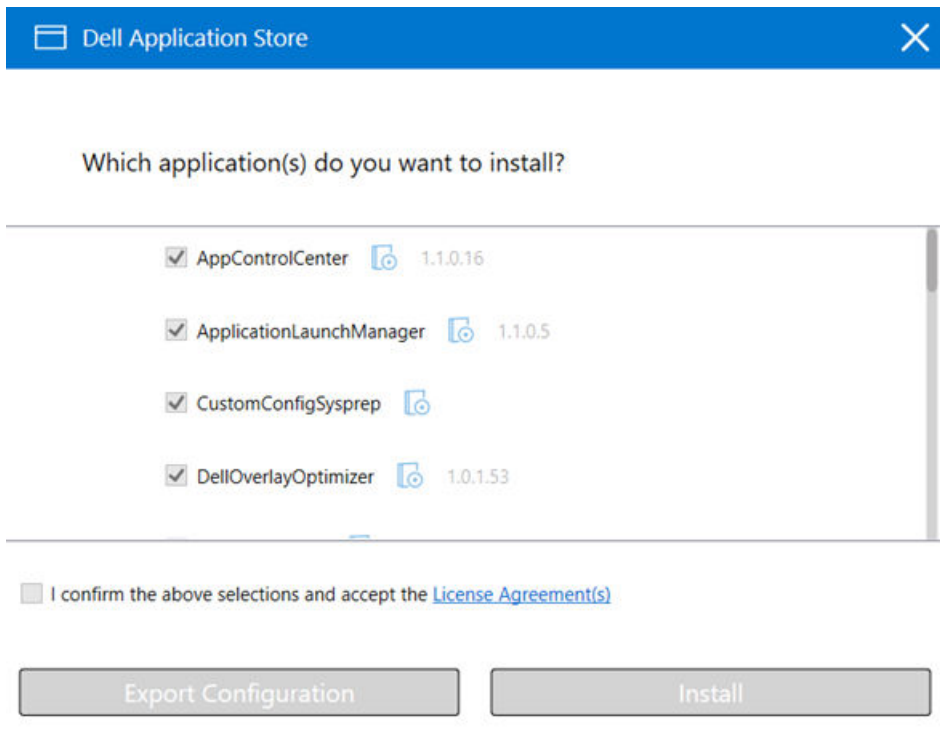


Figure 5. Dell Application Store

7. Read each **End User Licensing Agreement** and Click **Agree All**.

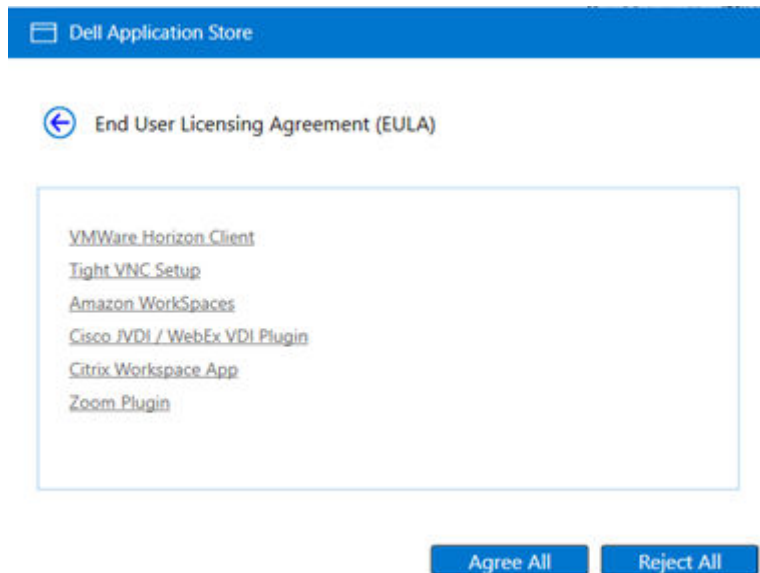
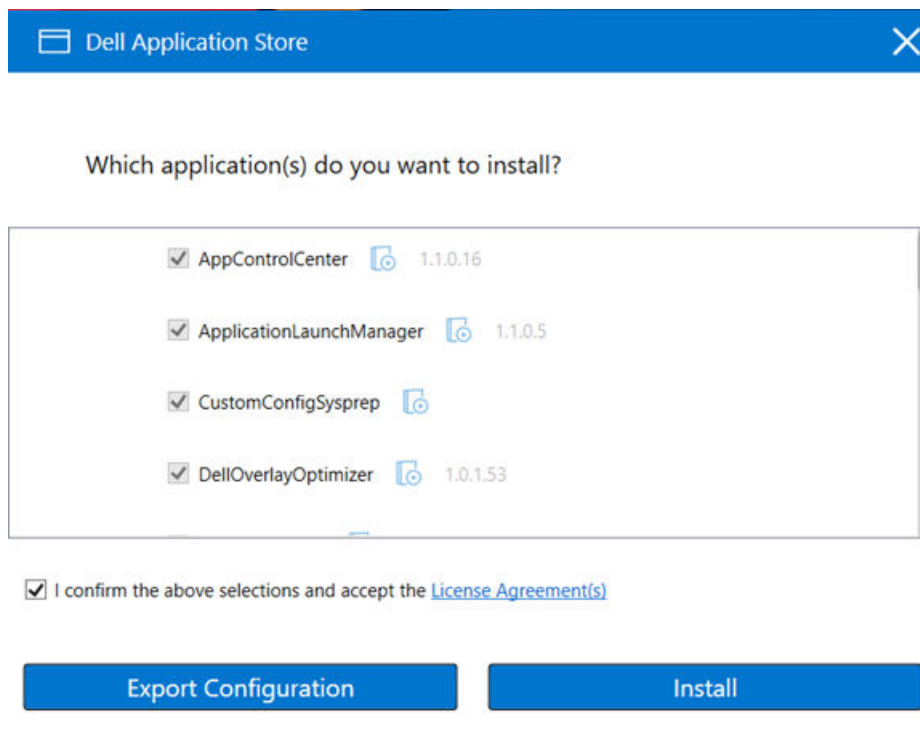


Figure 6. End User Licensing Agreement

8. Check the box to the message I confirm the above selections and agree to the License Agreement and click **Export Configuration**.



9. Enter the file name for PowerShell file and save the PowerShell file to the local path C:\Users\Admin\Desktop. Enter the File name as Exportconfig.ps1 and click **Save**.

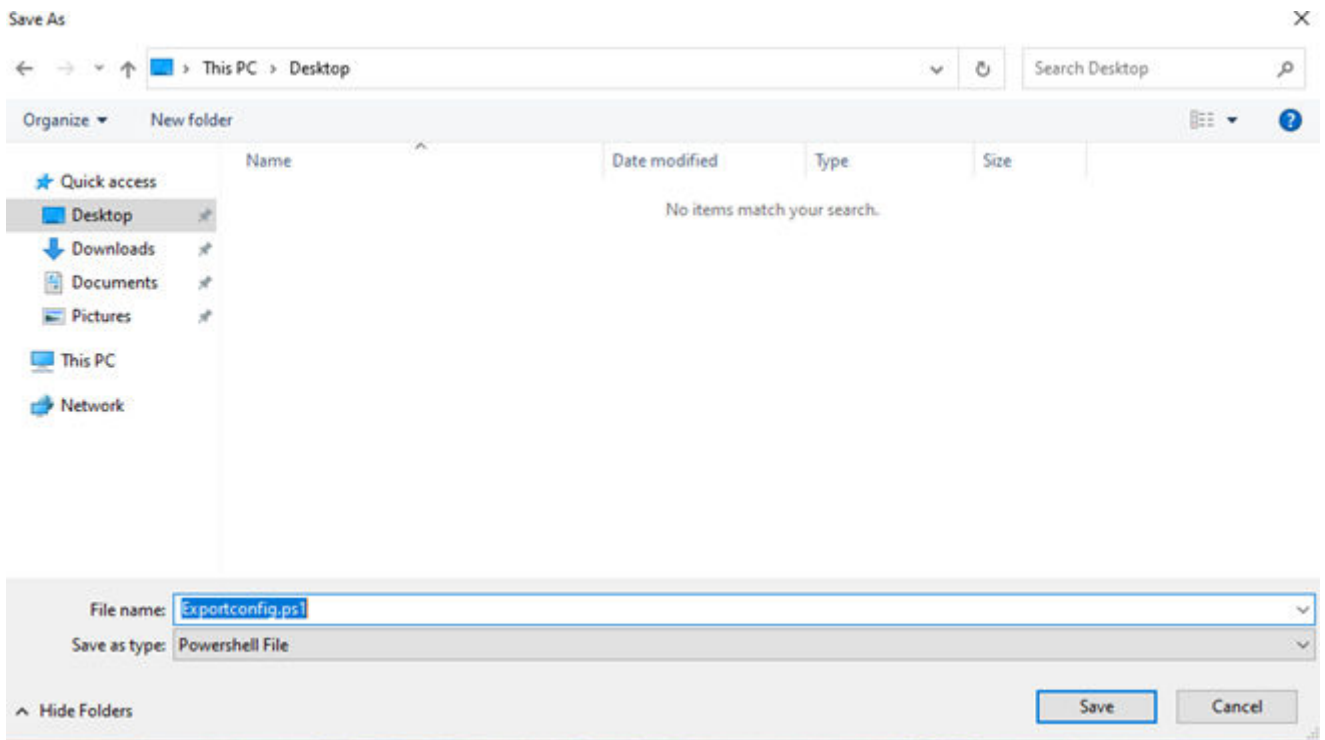


Figure 7. Save As

10. Click **OK** on the Installer Wizard window.

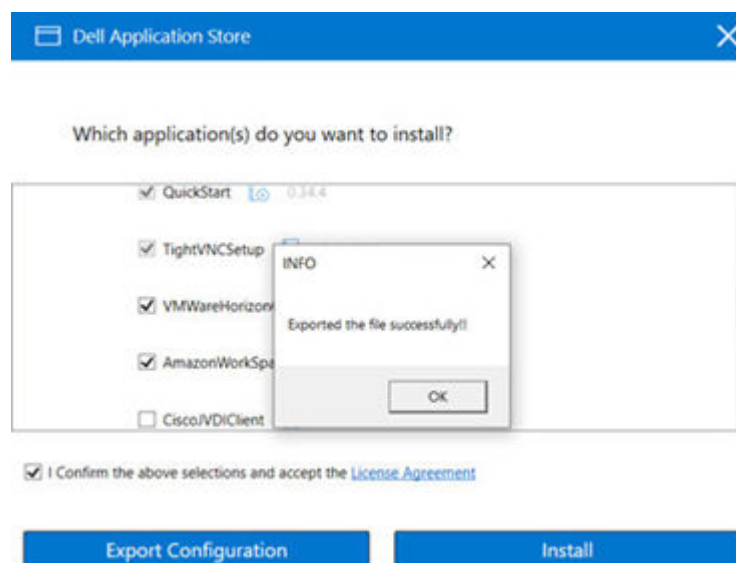


Figure 8. Installer Wizard Window

11. Click Close on the installer window and now Click **Finish**.

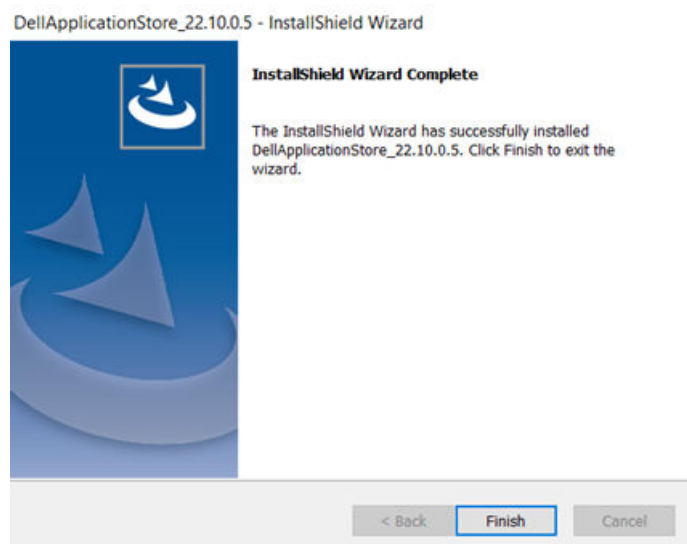


Figure 9. Installation Complete

12. Go to the location where the exported configuration PowerShell file is saved and run the PowerShell file with admin rights.
13. Follow the command prompts with admin rights and browse to the DellApplicationStore.exe location.
14. Run the command `DellApplicationstore.exe --silent`.

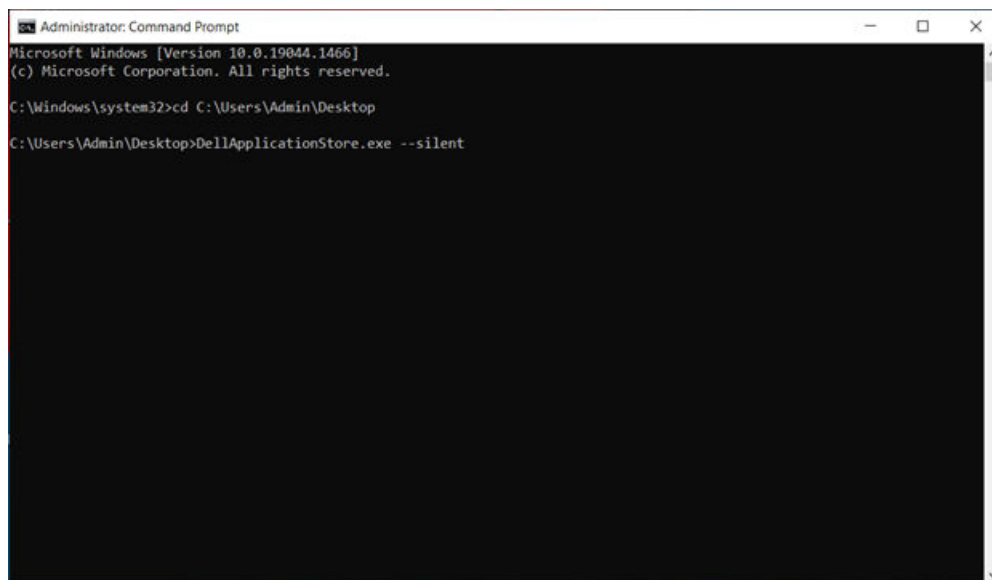


Figure 10. Command

15. Restart the device once installation is complete.
16. Log in to the admin account and enable the **Unified Write Filter**.

DellApplicationStore.exe installation procedure from Wyse Management Suite

1. Register the device to Wyse Management Suite server and add to the respective add-on group.
2. Generate Export Configuration PowerShell file (Follow the steps from 1 to 11 under [Silent Manual Installation using DellApplicationStore.exe installer file to generate](#)).
3. Copy Exportconfig.ps1 and DellApplicationStore.exe file to the Wyse Management Suite server repository under `C:\Wyse Management Suite\LocalRepo\repository\thinClientApps`.
4. Log in to the Wyse Management Suite server.
5. Go to Portal **Administration>File Repository**.

6. Check the **File Repository** and click **Sync Files**.
7. Follow the path **Apps & Data>App Inventory>Thin Client** and verify that the files are listed in the Thin Client.
8. Go to **Apps & Data>App Policies >Thin Client>Add Advanced Policy**.
9. Type DASdeployment as Policy name and follow the path **Device Group> Install Application Task** and select **WES** as operating system type.

NOTE: Here, DASdeployment is an example for the Policy name. You can name the Policy as per your choice.
10. Click **Add app** in Application option and add **ExportConfiguration.ps1** in the Apps dropdown list. Enter 5 mins as Install Timeout.

NOTE: For deploying, ExportConfiguration.ps1 parameters are not required.
11. Again, Click **Add app** in Application option and add **DellApplicationStore.exe** in the Apps dropdown list. Enter **--silent** (double --) as install parameter and **60** mins as Install Timeout.
12. Check the check box **Enable app dependency** and **WIE10** as operating system Subtype Filter.
13. Click **Save** and then click **Yes** to schedule a job immediately.
14. Go to **App Policy Job** and update the description.
15. Click **Run Immediately** and then click **Preview**.
16. Click **Schedule**.

NOTE: ExportConfiguration.ps1 file should be added first followed by DellApplicationStore.exe while creating Advanced App Policy

Installation procedure through Microsoft Endpoint Configuration Manager

Client Side:

1. Log in to the device as admin and disable the **Unified Write Filter**.
2. Join Thin client to the required Microsoft Endpoint Configuration Manager Domain (Set DNS if client is on another domain).
3. Login as domain user and change the Domain Administrator Time zone to Microsoft Endpoint Configuration Manager Server Time zone.
4. Go to **Control Panel> Configuration Manager>Site >Configure Settings>Find Button** where the Site CODE is displayed. Click **Apply**.
5. Select **Actions** tab and run the action item.
6. Enable the **Unified Write filter**.

NOTE:

Run the actions items again until you get the install notification from Microsoft Endpoint Configuration Manager server.

Server side:

Create a folder in Microsoft Endpoint Configuration Manager share path and then copy the created .ps1 file and DellApplicationStore installer.

1. Launch Microsoft Endpoint Configuration Manager Server.
2. Click **Asset & Compliance>Device Collection**. Right-click and select **Create Device collection** and add registered thin client to the group.
3. Go to **Software Library>Application Management>Packages**. Right-click and create package for DellApplicationStore.exe with **--silent** as parameter in command line.
4. Right-click the created package for Dell Application Store and distribute the package by selecting the distribute point.
5. Go to **Software Library>Operating System>Task Sequence**. Right-click and create custom task sequence.
6. Right-click the Custom task sequence that is created and click **Edit**.
7. Click **add> General> Power Shell Script** and provide a valid name.

8. Select radio button against **Enter a PowerShell script**.
9. Click **Add Script** and open the .ps1 file and select it.
10. Select **Bypass** in Power Shell Execution dropdown button and select **Apply**.
11. Click **add> Software>Install Package** and provide a valid name.
12. Browse the DAS distributed Package, click **Apply** and then select **OK**.
13. Right-click the **Edited Task Sequence** and deploy the created device collection immediately.

Deploying security patches for Windows 10 IoT Enterprise LTSC 2021

Topics:

- Download Knowledge Base for Windows 10 IoT Enterprise LTSC 2021 from Microsoft Update Catalog
- Install the MSU or EXE package using Wyse Management Suite

Download Knowledge Base for Windows 10 IoT Enterprise LTSC 2021 from Microsoft Update Catalog

This section describes the steps to download Knowledge Base files from the Microsoft Update Catalog site.

1. Go to www.catalog.update.microsoft.com.
2. In the search box, type the search terms.
For Windows 10 IoT Enterprise LTSC 2021, type search string **21H2 + Itsb + x64**
3. Click **Search** or press **Enter**.
4. Click **Last Updated** to sort the Knowledge Base files from newest to oldest.
5. Locate and download the following Knowledge Base files based on **Windows 10 LTSB**.

For example, Cumulative Updates for <Windows 10 LTSB> for x64-based systems <KB5013624>

i **NOTE:** Click the cumulative update to find more details on that update. Ensure to click the link under **More Information** to review the pre-requisites.

i **NOTE:** Install .NET Framework cumulative update as applicable.

i **NOTE:** When you download the latest Knowledge Base file for cumulative updates, it overrides the previous Knowledge Base files. To view the previous Knowledge Base files, click the latest Knowledge Base, and then click the **Package Details** tab.

6. After you download the Knowledge Base files, rename it by abbreviating the default name. For example, rename the file windows10.0-kb4346087-v3-x64_20f490a4493ec5ac99b6a4c357dca9d86b3ee96b.msu to windows10.0-kb4346087v3-x64.msu.

i **NOTE:** You may have to unblock the downloaded content to access the files.

Install the MSU or EXE package using Wyse Management Suite

1. Copy the renamed Knowledge Base file to the Wyse Management Suite server repository.
For example, copy the downloaded file to <local-repo>\repository\thinClientApps.
2. Log in to Wyse Management Suite.
3. Click **Portal Administration**, and then click **File Repository** under **Console Settings**.
4. Select the **Local Repository** check box.
5. Click **Sync Files**.
Wait for the synchronization process to complete. The synchronization process copies the package from the repository to **Apps and Data**.

6. To verify the successful synchronization, Click **Apps and Data**.
The **Apps and Data** page is displayed.

7. Verify the copied package in the applications list.

8. Click **Add Policy** to add the policy to the required group.



NOTE: If you use the `.exe` file that is downloaded from the Microsoft Update Catalog site, the silent parameter is `/quiet/norestart`. The default silent parameters are considered when you use the `.msu` file.

9. Update the required fields, and click **Save**.

10. Click **Yes** to deploy the policy immediately.

11. In the **App Policy** job, update the description.

12. Click **Run > Immediately**.

13. Click **Preview** and then click **Schedule**.