

PHILIPS

Curved Business
Monitor

5000 Series



49B2U5900CH

EN	
User manual	1
Customer care and warranty	37
Troubleshooting and FAQs	41

Register your product and get support at www.philips.com/welcome

Table of Contents

1. Important	1	10. Troubleshooting & FAQs	41
1.1 Safety precautions and maintenance	1	10.1 Troubleshooting	41
1.2 Notational Descriptions	3	10.2 General FAQs	42
1.3 Disposal of product and packing material	4	10.3 Multiview FAQs	45
2. Setting up the monitor	5		
2.1 Installation	5		
2.2 Operating the monitor	9		
2.3 Built-in Windows Hello™ pop-up webcam	15		
2.4 MultiClient Integrated KVM	18		
2.5 MultiView	20		
2.6 Remove the Base Assembly for VESA Mounting	22		
3. Image Optimization	23		
3.1 SmartImage	23		
3.2 SmartContrast	25		
3.3 LightSensor	25		
3.4 HDR	26		
4. Designs to prevent computer vision syndrome (CVS)	27		
5. PowerSensor™	28		
6. Adaptive Sync	30		
7. Technical Specifications	31		
7.1 Resolution & Preset Modes	35		
8. Power Management	36		
9. Customer care and warranty ...	37		
9.1 Philips' Flat Panel Displays Pixel Defect Policy	37		
9.2 Customer Care & Warranty	40		

1. Important

This electronic user's guide is intended for anyone who uses the Philips monitor. Take time to read this user manual before you use your monitor. It contains important information and notes regarding the operation of your monitor.

The Philips guarantee applies provided that the product is handled for its intended use, by its operating instructions, and accompanied by the presentation of the original invoice or cash receipt that indicates the date of purchase, dealer's name and model, and production number of the product.

1.1 Safety precautions and maintenance

Warnings

The use of controls, adjustments, or procedures other than those specified in this document may result in exposure to shock, electrical hazards, and/or mechanical hazards.

Read and follow these instructions when connecting and using your monitor.

Excessive sound pressure from earphones and headphones can cause hearing loss. Adjustment of the equalizer to maximum capacity increases the earphones and headphones output voltage; thereby increasing the sound pressure level.

Operation

- Please Keep the monitor out of direct sunlight, very strong bright lights and away from any other heat source. Lengthy exposure to this type of environment may result in discoloration and damage to the monitor.
- Keep the display away from oil. Oil may damage the plastic cover of the display and void the warranty.
- Remove any object that could fall into ventilation holes or prevent proper cooling of the monitor's electronics.
- Do not block the ventilation holes in the cabinet.
- When positioning the monitor, make sure the power plug and outlet are easily accessible.
- If turning off the monitor by detaching the power cable or DC power cord, wait for 6 seconds before attaching the power cable or DC power cord before returning to normal operation.
- Please use the approved power cord provided by Philips all the times. If your power cord is missing, please contact your local service center. (Please refer to the Service contact information located in the Important information manual.)
- Operate under the specified power supply. Use of incorrect voltage will cause malfunction and may cause fire or electric shock.
- Protect the cable. Do not pull or bend the power cable and signal cable. Do not place the monitor or any other heavy objects on the cables. If damaged, the cables may cause fire or electric shock.
- Do not subject the monitor to severe vibration or high-impact conditions during operation.
- To avoid potential damage, like the panel peeling from the bezel, ensure that the monitor does not tilt downward by more than -5 degrees. If the -5 degree downward tilt angle

maximum is exceeded, the monitor damage will not be covered under warranty.

- Do not knock or drop the monitor during operation and/or transportation.
- The USB Type-C port could only be connected to specify equipment with fire enclosure in compliance with IEC 62368-1 or IEC 60950-1.
- Excessive usage of the monitor can cause eye discomfort. It's recommended to take shorter breaks more often at your workstation than longer breaks and less often. For example, a 5-10 minute break after 50-60-minute continuous screen use is likely to be better than a 15-minute break every two hours. Prevent eye strain while using the screen for a constant period by :
 - Looking at something varying distances after a long period of focusing on the screen.
 - Conscious Blinking while you work.
 - Gently closing and rolling your eyes to relax.
 - Reposition your screen to the appropriate height and angle.
 - Adjust the brightness and contrast to an appropriate level.
 - Adjust the environment lighting similar to that of your screen brightness. Avoid fluorescent lighting and surfaces that don't reflect too much light.
 - Seeing a doctor if your symptoms worsen.

Maintenance

- To protect your monitor from possible damage, do not put excessive pressure on the LCD panel. When moving your monitor, grasp the frame to lift; do not lift the monitor by placing your hand or fingers on the LCD panel.
- Oil-based cleaning solutions may damage the plastic parts and void the warranty.
- Unplug the monitor if you are not going to use it for an extensive period.
- Unplug the monitor if you need to clean it with a slightly damp cloth. The screen may be wiped with a dry cloth when the power is off. However, never use organic solvents, such as alcohol or ammonia-based liquids.
- To avoid the risk of shock or permanent damage to the set, do not expose the monitor to dust, rain, water, or excessive moisture.
- If your monitor gets wet, wipe it with a dry cloth as soon as possible.
- If a foreign substance or water gets in your monitor, please turn the power off immediately and disconnect the power cord. Then, if damaged, send it to the maintenance center.
- Do not store or use the monitor in locations exposed to heat, direct sunlight, or extreme cold.
- To maintain the best performance of your monitor and use it for a longer lifetime, please use the monitor in a location that falls within the following temperature and humidity ranges:

- Temperature: 0°C-40°C 32°F-104°F
- Humidity: 20%-80% RH

Important information for Burn-in/ Ghost image

- Always activate a moving screen saver program when you leave your monitor unattended. Always activate a periodic screen refresh application if your monitor will display unchanging static content. Uninterrupted display of still or static images over an extended period may cause “burn-in”, also known as “after-imaging” or “ghost imaging”, on your screen.
- “Burn-in”, “after-imaging”, or “ghost imaging” is a well-known phenomenon in LCD panel technology. In most cases, the “burn-in” or “after-imaging” or “ghost imaging” will disappear gradually over a period of time after the power has been switched off.

Warning

Failure to activate a screen saver, or a periodic screen refresh application may result in severe “burn-in” or “after-image” or “ghost image” symptoms that will not disappear and cannot be repaired. The damage mentioned above is not covered under your warranty.

Service

- The casing cover should be opened only by qualified service personnel.
- If there is any need for any document for repair or integration, please contact your local service center. (You can refer to the service contact information listed in the important information manual.)
- For transportation information, please refer to “Technical Specifications”.

- Do not leave your monitor in a car under direct sunlight.

Note

Consult a service technician if the monitor does not operate normally or you are not sure what procedure to take when the operating instructions given in this manual.

1.2 Notational Descriptions

The following subsections describe the notational conventions used in this document.

Notes, Cautions, and Warnings

Throughout this guide, blocks of text may be accompanied by an icon and printed in bold or italic type. These blocks contain notes, cautions, and/or warnings.

Note

This icon indicates important information and tips that help you make better use of your computer system.

Caution

This icon indicates information that tells you how to avoid either potential damage to the hardware or loss of data.

Warning

This icon indicates the potential for bodily harm and tells you how to avoid the problem.

Some warnings may appear in alternate formats and may not be accompanied by an icon. In such cases, the specific presentation of the warning is mandated by the relevant regulatory mechanism.

1.3 Disposal of product and packing material

Waste Electrical and Electronic Equipment-WEEE



This marking on the product or its packaging illustrates that, under European Directive 2012/19/EU governing used electrical and electronic appliances, this product may not be disposed with normal household waste. You are responsible for the disposal of this equipment through a designated waste electrical and electronic equipment collection. To determine the locations for dropping off such waste, contact your local government office, the waste disposal organization that serves your household, or the store at which you purchased the product.

Your new monitor contains materials that can be recycled and reused. Specialized companies can recycle your product to increase the number of reusable materials and minimize the amount to be disposed of.

All redundant packing material has been omitted. We have done our utmost to make the packaging easily separable into mono materials.

Please find out about the local regulations on how to dispose of your old monitor and packing from your sales representative.

Taking back/Recycling Information for Customers

Philips establishes technically and economically viable objectives to optimize the environmental performance of the organization's products, services, and activities.

From the planning, design, and production stages, Philips emphasizes the importance of making products that can easily be recycled. At Philips, end-of-life management primarily entails participation in national take-back initiatives and recycling programs whenever possible, preferably in cooperation with competitors, which recycle all materials (products and related packaging material) following all Environmental Laws and taking back programs with the contractor company.

Your display is manufactured with high-quality materials and components which can be recycled and reused.

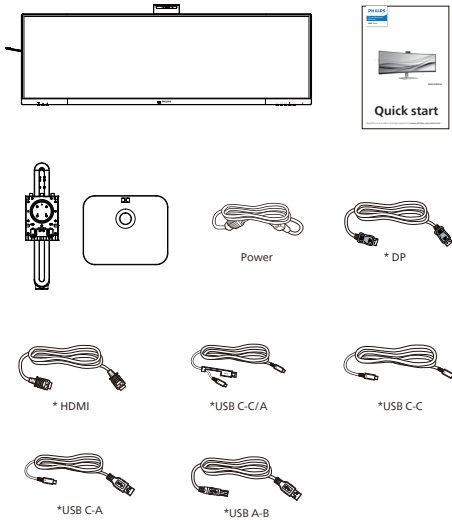
To learn more about our recycling program please visit:

<http://www.philips.com/a-w/about/sustainability.html>

2. Setting up the monitor

2.1 Installation

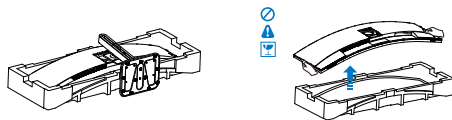
1 Package contents



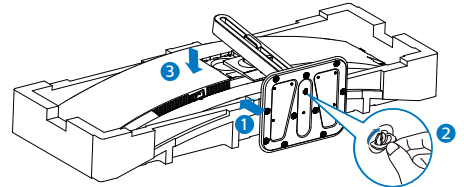
*Different according to region.

2 Install the base

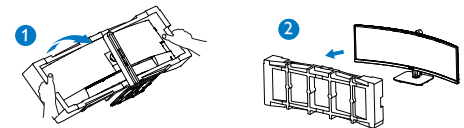
1. To well protect this monitor and avoid scratching or damaging of the monitor, keep the monitor face down in the cushion for the base installation.



2. Hold the stand with both hands.
 - (1) Gently attach the base to the stand.
 - (2) Use a screwdriver to tighten the screws located at the bottom of the base, and secure the base to the stand tightly.
 - (3) Gently attach the stand to the VESA mount area until the latch locks the stand.

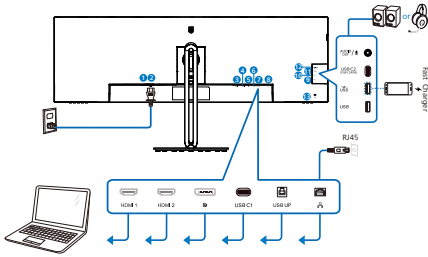


3. After attaching the base, erect the monitor with both hands holding the monitor together with styrofoam firmly. Now you can pull out the styrofoam. When you pull out the styrofoam, do not squeeze the panel.

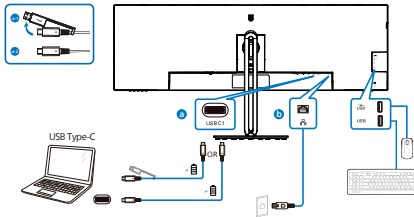


- ⚠ Warning**
This product is curve design, when attach / detach the base, place the protective material under the monitor and do not press down the monitor to avoid the damage.

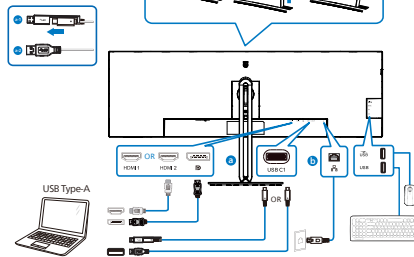
3 Connecting to your PC



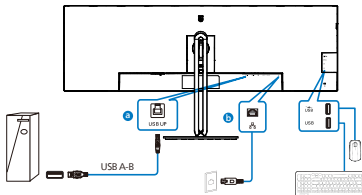
USB docking (USB C-C)



USB hub (USB A-C)



USB hub



- ❶ Power Switch
- ❷ AC power input
- ❸ HDMI 1 input
- ❹ HDMI 2 input
- ❺ DisplayPort input
- ❻ USB C1
- ❼ USB upstream
- ❽ RJ45 input
- ❾ USB downstream
- ❿ USB downstream/USB fast charger
- ⓫ USB C2(Power supply up to 15W)
- ⓬ Audio (In/Out): audio out / microphone in combo jack
- ⓭ Kensington anti-theft lock

Connect to PC

1. Connect the power cord to the back of the display firmly.
2. Turn off your computer and unplug its power cable.
3. Connect the monitor signal cable to the video connector on the back of your computer.
4. Plug the power cord of your computer and your monitor into a nearby outlet.
5. Turn on your computer and monitor. If the monitor displays an image, installation is complete.

4 RJ45 driver installation

You can find the “LAN Drivers” from Philips website support page.

Please follow the steps for the installation:

1. Install the LAN driver that matches your system.
2. Double click driver to install, and follow Window’s instructions to proceed with installation.
3. It will show “success” when the installation is finished.
4. You must reboot your computer after the installation has completed.
5. Now you will be able to see “Realtek USB Ethernet Network Adapter” from your program installed list.
6. We recommend to periodically visit the above web link to check for the availability of the most updated driver.

Note

Please contact Philips service hotline for Mac address clone tool as necessary.


5 USB hub

To comply with International energy standards, the USB hub/ports of this monitor are disabled during Standby and Off modes.

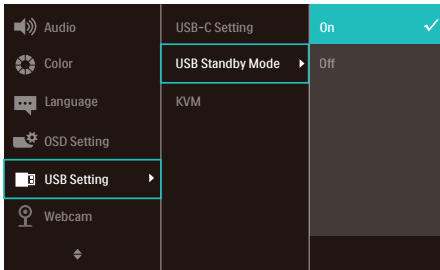
Connected USB devices will not work in this state.

To permanently put the USB function in the “ON” state, please go to OSD Menu, then select “USB standby mode”, and switch it to the “ON” state. Somehow if your monitor resets to the factory setting, ensure to select “USB standby mode” to “ON” state in the OSD menu.

6 USB charging

This monitor has USB ports capable of standard power output including some with USB Charging function (identifiable with power icon ). You can use these ports to charge your Smart phone or power your external HDD, for example. The monitor must be powered ON at all times to be able to use this function.

Some selected Philips displays may not Power or Charge your device when it enters "Sleep/Standby" mode (White power LED blinking). In that case, please enter to OSD Menu and select "USB Standby Mode", then, turn the function to "ON" mode (default=OFF). This will then keep the USB power and charging functions active even when the monitor is in sleep/standby mode.



Note

If you Turn OFF your monitor via the power switch at any given time, all the USB ports will power OFF.

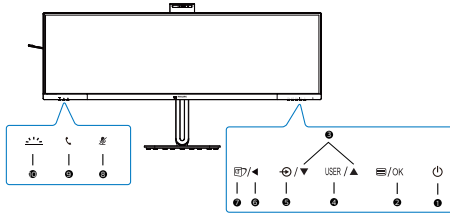
Warning

USB 2.4Ghz wireless devices, such as wireless mice, keyboards, and headphones, may result in decreased efficiency of radio transmission of USB 3.2 devices. Should this happen, please try the following methods to help reduce the effects:

- Try to keep USB 2.0 receivers away from a USB 3.2 connection port.
- Use a standard USB extension cable or USB hub to increase the space between your wireless receiver and the USB3.2 or higher version of connection port.

2.2 Operating the monitor

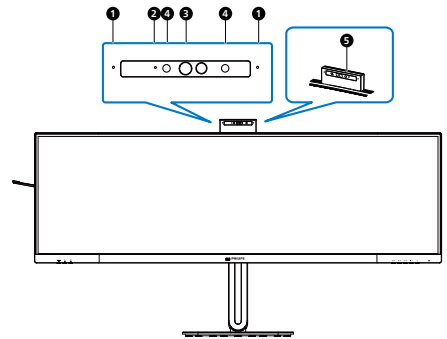
1 Description of the control buttons



1		Switch monitor's power ON or OFF.
2		Access the OSD menu. Confirm the OSD adjustment.
3		Adjust the OSD menu.
4	USER	User preference key. Customize your own preference function from OSD to become the "user key".
5		Change the signal input source.
6		Return to previous OSD level.
7		SmartImage hot key. There are multiple modes to select: EasyRead, Office, Photo, Movie, Game, Economy, LowBlue Mode, SmartUniformity, Off. When the monitor receives HDR signal, SmartImage will show HDR menu. There are multiple selections in this menu: HDR Premium, HDR Movie, HDR Photo, DisplayHDR 400, HDR Basic, Off.

8		Mute hot key, Switch Microphone Mute or UnMute.
9		Accept or decline an incoming invite notification.
10		Turn the Busylight on and off. This can help signal to others that you are in a busy office setting.

2 Webcam




1	Microphone
2	Webcam activity light
3	5.0 Megapixel Webcam
4	IR of Face identification
5	Busylight

3 "mute" hot key

OSD Menu	Teams app	Lync app (skype for business)	Zoom app	Other communication softwares (Line, WeChat, Google meeting, Blue Jeans, Cisco Webex, Goto meeting, FaceTime, Slack.)
Microphone Mute	■	■	#	*

■ Mute function works with the operating system.

Mute function works with the operating system, if the monitor is certified by Zoom.

* Mute function works by pressing  button on the display, but the Mute Icon of the operating system doesn't sync with the monitor. (Operating system will show as unmuted.)

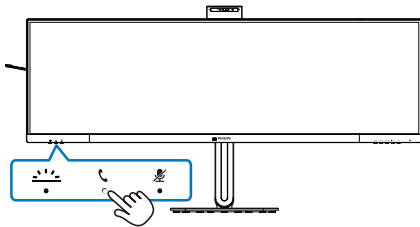
Note

The mute function on microphone would disable the function of PowerSensor. If you want to turn on the function of PowerSensor, please unmute your microphone.

4 Hook button

For accepting or declining an incoming invite notification.

This button links to Skype and Microsoft® Teams accounts (for paid subscriptions only). To accept an incoming call, press the hook button and it will automatically light up the Busylight beacon. In addition, the LED light located on the hook button will turn white after you receive the call. To end the call, press the hook button when ready.



Note

This button only functions properly when connected to a USB upstream cable from the monitor to your PC.

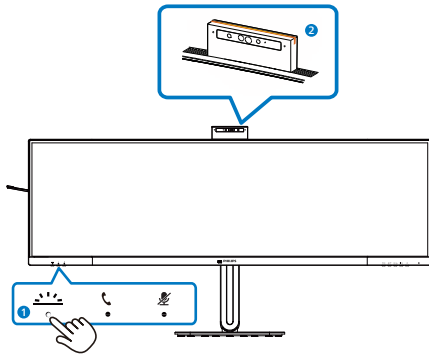
5 Busylight button

Users are able to turn the Busylight on and off.

There are 2 kinds of functions for the Busylight button.


1. The Busylight will automatically turn on when you are on a call (for Microsoft® Teams and Skype applications). In addition, the Busylight function can help signal to others that you are in a busy office setting.

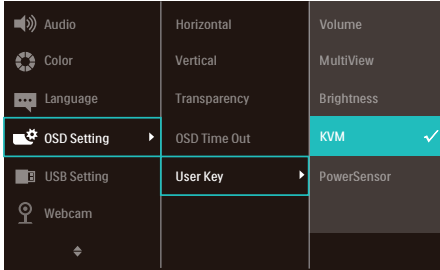
2. To activate when not in a call, simply press the Busylight button and the light located on the webcam will turn red to transmit to others that you are busy. Please note that you may need to press the button again after answering and ending a call as the Busylight automatically turns off after hanging up.






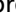


6 Customize your own "USER" key

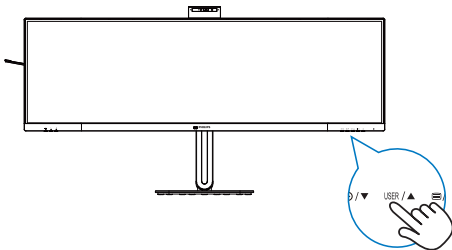
This hot key allows you to setup your favorite function key.

1. Press  button on the front bezel to enter OSD Menu Screen.



2. Press  or  button to select main menu [OSD Settings], then press OK button.
3. Press  or  button to select [User Key], then press OK button.
4. Press  or  button to select your preferred function.
5. Press OK button to confirm your selection.

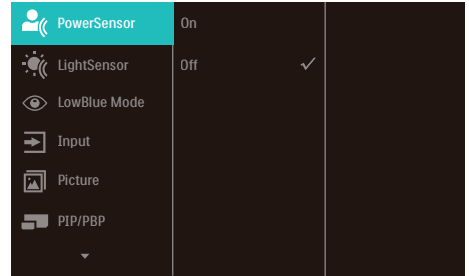
Now you can press the hotkey directly on the front bezel. Only your pre-selected function will appear for quick access.



7 Description of the On-Screen Display

What is On-Screen Display (OSD)?

On-Screen Display (OSD) is a feature in all Philips QD OLED monitors. It allows an end user to adjust screen performance or select functions of the monitors directly through an on-screen instruction window. A user-friendly OSD interface is shown below:



Basic and simple instructions on the control keys

To access the OSD menu on this Philips display, simply use the single toggle button located on the rear side of the display. The single button operates like a joystick. To move the cursor, simply toggle the button in four directions. Press the button to select the desired option.

The OSD Menu


Below is an overall view of the structure of the On-Screen Display. You can use this as a reference when you want to work your way around the different adjustments later on.

Main menu	Sub menu		
PowerSensor	On	— 0, 1, 2, 3, 4	
	Off		
LightSensor	On		
	Off		
LowBlue Mode	On	— 1, 2, 3, 4	
	Off		
Input	1 HDMI 2.0		
	2 HDMI 2.0		
	DisplayPort		
	USB C		
	Auto		— On, Off
Picture	Adaptive Sync	— On, Off	
	Picture Format	— Wide screen, 4:3, 16:9, Movie 1, Movie 2, 1:1	
	Brightness	— 0-100	
	Contrast	— 0-100	
	Sharpness	— 0-100	
	SmartResponse	— Off, Fast, Faster, Fastest	
	SmartContrast	— On, Off	
	Gamma	— 1.8, 2.0, 2.2, 2.4, 2.6	
	Pixel Orbiting	— On, Off	
	Over Scan	— On, Off	
	PIP/PBP	PIP / PBP Mode	— Off, PIP, PBP
PIP / PBP Input		— 1 HDMI 2.0, 2 HDMI2.0, DisplayPort, USB C	
PIP Size		— Small, Middle, Large	
PIP Position		— Top-Right, Top-Left, Bottom-Right, Bottom-Left	
Swap			
Audio	Volume	— 0-100	
	Mute	— On, Off	
	Audio Source	— HDMI1, HDMI2, DisplayPort, USB C	
Color	Color Temperature	— Native, 5000K, 6500K, 7500K, 8200K, 9300K, 11500K	
	sRGB		
	User Define	— Red: 0-100 — Green: 0-100 — Blue: 0-100	
Language	— English, Deutsch, Español, Ελληνική, Français, Italiano, Magyar, Nederlands, Português, Português do Brasil, Polski, Русский, Svenska, Suomi, Türkçe, Čeština, Українська, 简体中文, 繁體中文, 日本語, 한국어		
OSD Setting	Horizontal	— 0-100	
	Vertical	— 0-100	
	Transparency	— Off, 1, 2, 3, 4	
	OSD Time Out	— 5s, 10s, 20s, 30s, 60s	
	User Key	Volume	
		MultiView	
Brightness			
KVM			
PowerSensor			
USB Setting	USB-C Setting	— High Data Speed, High Resolution	
	USB Standby Mode	— On, Off	
	KVM	— Auto, USB C, USB UP	
Webcam	Webcam Light	— 0, 1, 2, 3, 4	
Setup	Power LED	— 0, 1, 2, 3, 4	
	Resolution Notification	— On, Off	
	Reset	— Yes, No	
	Information		

8 Resolution notification

This monitor is designed for optimal performance at its native resolution, 5120 x 1440. When the monitor is powered on at a different resolution, an alert is displayed on screen: Use 5120 x 1440 for best results. Display of the native resolution alert can be switched off from Setup in the OSD (On Screen Display) menu.

Note

1. The USB hub default setting of USB C input for this monitor is "High Data Speed". The maximum resolution supported depends on your graphic card capability. If your PC doesn't support HBR 3, select High Resolution in USB Setting, then the maximum resolution supported will be 5120 x 1440 @75Hz. Press  button > USB Setting > USB > High Resolution
2. If your Ethernet connection seems slow, please enter OSD menu and select High Data Speed which supports the LAN speed to 1G.

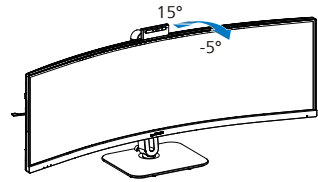
9 Firmware

The over-the-air (OTA) firmware update is through the SmartControl software and is easily downloadable through the Philips website. What does SmartControl do? It is an additional software that helps control the photo, audio, and the other on-screen graphic settings of the monitor.

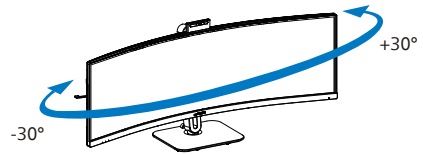
In the "Setup" section, you can check which firmware version you currently have and if you need to upgrade or not. In addition, it is important to note that the firmware upgrades must be done through the SmartControl software. It is necessary to be connected to a network when updating the firmware on SmartControl over-the-air (OTA).

10 Physical Function

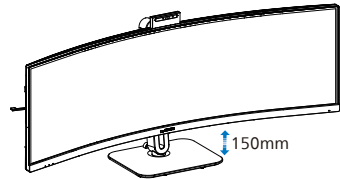
Tilt



Swivel



Height adjustment



Warning

- To avoid potential screen damage, such as panel peeling, ensure that the monitor does not tilt downward by more than -5 degrees.
- Do not press the screen while adjusting the angle of the monitor. Grasp only the bezel.

2.3 Built-in Windows Hello™ pop-up webcam

1 What is it?

Philips' innovative and secure webcam pops up when you need it and securely tucks back into the monitor when you are not using it. The webcam is also equipped with advanced sensors for Windows Hello facial recognition, which conveniently logs you into your Windows devices in less than 2 seconds, 3 times faster than a password.

2 How to enable Windows Hello™ pop-up webcam

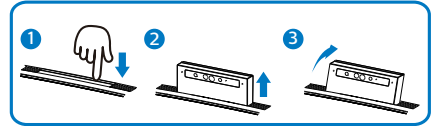
Philips monitor with Windows Hello webcam can be enabled by simply connecting your USB cable from your PC to the "USB C" port or "USB UP" port of this monitor, then make a selection accordingly from the "KVM" section of your OSD menu. Now, the webcam with Windows Hello is ready to work as long as the Windows Hello setting in Windows 11 is complete. Refer to Windows official website for the settings: <https://support.microsoft.com/help/4028017/windows-learn-about-windows-hello-and-set-it-up>

Please note that Windows 11 system is required for setting up Windows Hello: facial recognition; with an edition lower than Windows 11 or Mac OS, the webcam can work without the function of facial recognition.

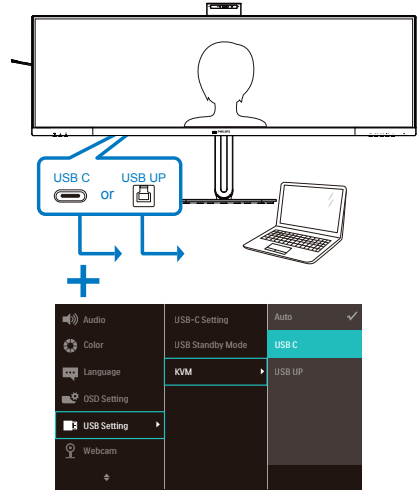
Operating System	Webcam	Windows hello
Win8	Yes	No
Win8.1	Yes	No
Win10	Yes	Yes
Win11	Yes	Yes

Please follow the steps for the setting:

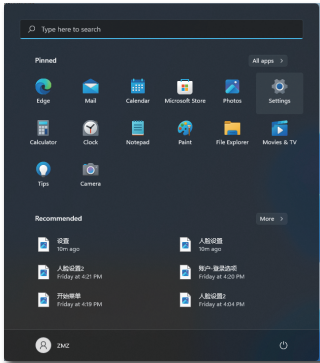
1. Press the built-in webcam on the top of this monitor, and turn it to the front. This is adjustable webcam. By adjusting the webcam back by 30 degrees, you can now comfortably call and attend meetings from any position that best suits you.



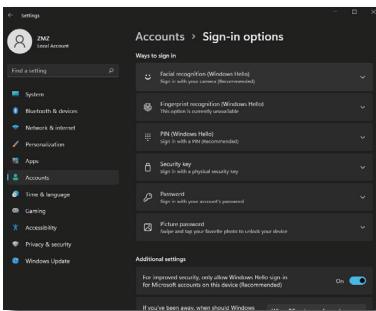
2. Simply connect the USB cable from your PC to the "USB C" or "USB UP" port of this monitor



3. Setting in Windows 11 for Windows Hello



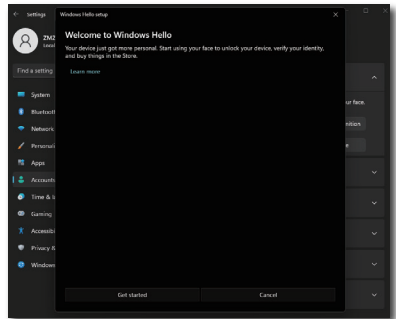
a. In the settings app click on accounts.



b. Click on sign-in options in the sidebar.

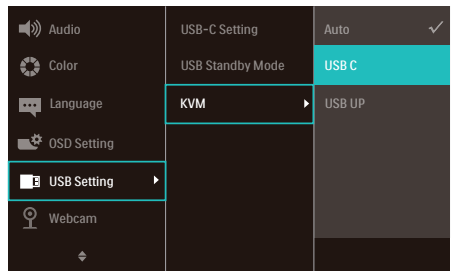
c. You need to set up a PIN code before you're allowed to use Windows Hello. Once you've added this, the option for Hello will unlock.

d. You'll now see which options are available to set up under Windows Hello.




e. Click on "Get started." The setting is complete.

4. If you connect the USB cable from "USB C" port of this monitor, please enter OSD menu to make a appropriate selection of "USB C" under the "KVM" layer.



 Note

1. Please always go to Windows official website to access the latest information, the information in EDFU is subject to change without further notice.
2. Different regions have different voltages, with inconsistent voltage setting may cause water ripple when using this webcam. Please make the voltage setting same as the voltage of your region.
3. This monitor has a webcam active beacon that lights up when the webcam is in use. There are four brightness options, 0=OFF to 4=HI, default 1. You can press the OSD button  to enter the on-screen display menu, under Webcam>Webcam light, to adjust the brightness level.

2.4 MultiClient Integrated KVM

1 What is it?

With the Multiclient Integrated Keyboard Video Mouse (KVM) switch feature, it is possible to control two separate PCs with a one monitor/ keyboard/mouse setup.

2 How to Enable Multiclient Integrated KVM

With the built-in Multiclient Integrated KVM feature, it's easy to switch between each connected device via the On-Screen Display (OSD) menu setting. For the use of USB-C, HDMI and/or DP as input, use the USB-C1/USB-B cable in the direction of USB Upstream.

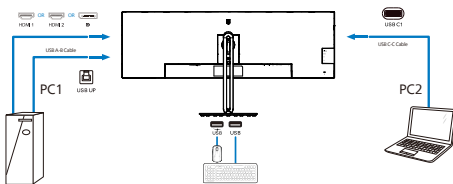
Then, connect the upstream cables from your PC to the USB-C1 and USB up ports located on the monitor. This process for each PC can be done simultaneously. Please refer to the table and graphic below for more information.

This table explains each source to its corresponding ports on the monitor.

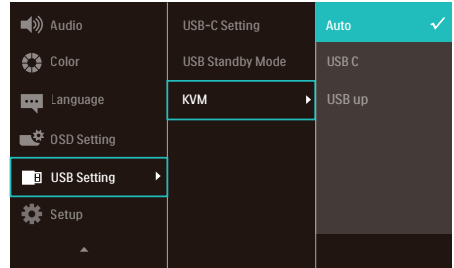
Source	USB Upstream
HDMI or DP	USB UP
USB C1	USB C1

A Step-by-Step procedure:

1. Connect each cord from the corresponding ports on the monitor, as mentioned in the table above, downstream to each PC.



2. Enter the On-Screen Display (OSD) menu. Go to the KVM tab and select "Auto", "USB C", or "USB up" to switch the monitor view from one device to another. To switch to another monitor view, simply repeat this step.



3. Go to the KVM tab and select "Auto", the KVM Smart function can be used.

Users are now able to switch between sources more easily with the latest Smart KVM feature. To move sources, simply click the "ctrl" three times. It would be also available for swapping the Main Picture and the Sub Picture on PIP with Smart KVM.

If you would like to use a DP and/or HDMI cord to input into your device, use the USB-C1 and USB-B ports with the USB cord being in direction USB upstream.

Please check out the following steps for adjusting the settings for HDMI/DP usage:

1. Connect the USB cable upstream from the PC(s) to the "USB C1" and "USB up" ports of this monitor. This procedure can be done at the same time, if desired.

The dual PC setup should look like this:

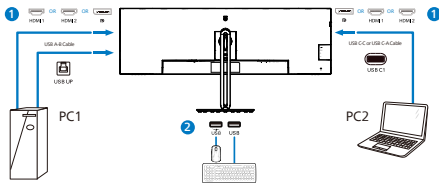
PC1: You can use a USB-A/B cable in direction upstream and a HDMI cable or a DP cable and connect it to the USB up port on the monitor for viewing video and audio content.

PC2: You can use a USB-C/A or USB-C/C cable in direction upstream and a HDMI cable or a DP cable and connect it to the USB-C1 port on the monitor for viewing video and audio content.

For your convenience. Please use the table below as reference.

Source	USB Upstream
HDMI or DP	USB UP
DP or HDMI	USB C1

2. Connect each PC to the downstream end of the USB-C1 cable.

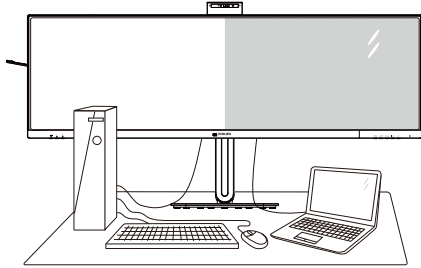


3. Go to the On-Screen Display (OSD) menu and follow the same procedure with the KVM feature as #2 in the previous section.

Note

- Please note that the connection of the input source is not automatic and it is necessary to go to the On-Screen Display (OSD) to select the input you are using.
- You can also ads Multiclient Integrated KVM feature in Picture-by-Picture (PBP) mode. When you enable PBP, you are able to view two different sources projected onto the same screen. The MultiClient Integrated KVM feature enhances productivity by using one screen to control two PCs via the On-Screen Display (OSD) menu setting.

2.5 MultiView




1 What is it?

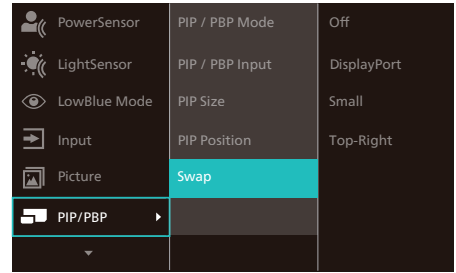
Multiview enables active variety to connect and view so that you can work with multiple devices like PC and Notebook side-by-side simultaneously, thereby making complex multitasking work a breeze.







2 Why do I need it?

With the ultra-high-resolution Philips MultiView display, you can comfortably experience a world of connectivity in the office or at home. With this display, you can conveniently enjoy multiple content sources on one screen. For example, You may want to keep an eye on the live news video feed with audio in the small window, while working on your latest blog... or you may want to edit an Excel file from your Ultrabook, while logged into a secured company intranet to access files from a desktop.

3 How to enable MultiView by OSD menu?

1. Press  button on the front bezel to enter OSD Menu Screen.



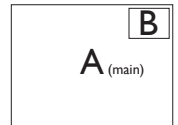
2. Press  or  button to select main menu [PIP / PBP], then press OK button.
3. Press  or  button to select [PIP / PBP Mode], then press OK button.
4. Press  or  button to select [PIP] or [PBP].
5. Now you can move backward to set the [PIP / PBP Input], [PIP Size], [PIP Position], or [Swap].
6. Press OK button to confirm your selection.

4 MultiView in OSD menu

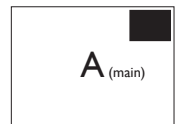
- **PIP / PBP Mode:** There are two modes for MultiView: [PIP] and [PBP].

[PIP]: Picture in Picture

Open up a sub-window of another signal source.

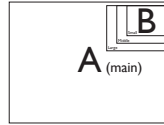


When the sub source is not detected:



[PBP]: Picture by Picture

Open up a sub-window side-by-side of another signal source.



When the sub source is not detected:



Note

The black strip located on the top and the bottom of the screen is for measuring the correct aspect ratio when in the PBP mode. If you expect to see full-screen, adjust your device's resolutions to pop-up attention resolution and you will be able to see 2 devices' source screen project to this display without black strips. It is important to note that the analog signal is not supported on full screen in PIP mode.

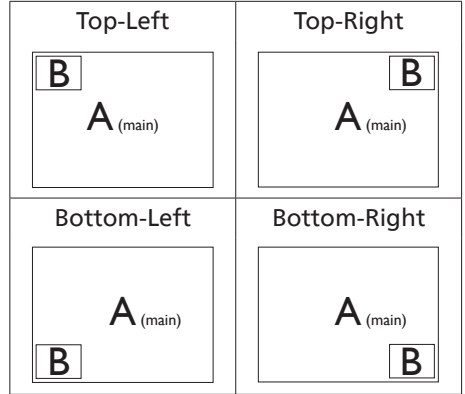
- **PIP / PBP Input:** There are different video inputs to choose from as the sub-display source: [1 HDMI 2.0], [2 HDMI 2.0], [DisplayPort] and [USB C].

Please refer to the table below for compatibility of the main/sub-input source.

		SUB SOURCE POSSIBILITY (x1)			
MultiView	Inputs	HDMI 1	HDMI 2	DisplayPort	USBC
MAIN SOURCE (x1)	HDMI 1	●	●	●	●
	HDMI 2	●	●	●	●
	DisplayPort	●	●	●	●
	USBC	●	●	●	●

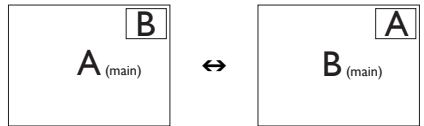
- **PIP Size:** When PIP is activated, there are three sub-window sizes to choose from [Small], [Middle], [Large].

- **PIP Position:** When PIP is activated, there are four sub-window positions to choose from.



Swap: The main picture source and the sub-picture source are swapped on the display.

Swap A and B source in [PIP] mode:



Swap A and B source in [PBP] mode:



- **Off:** Stop MultiView function.



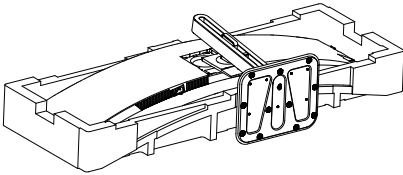
Note

When you activate the SWAP function, the video and its audio source will swap at the same time.

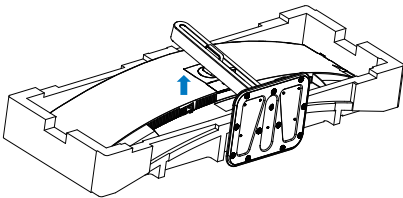
2.6 Remove the Base Assembly for VESA Mounting

Before you start disassembling the display base, please follow the instructions below to avoid any possible damage or injury.

1. Place the monitor face down on a smooth surface. Pay attention not to scratch or damage the screen.

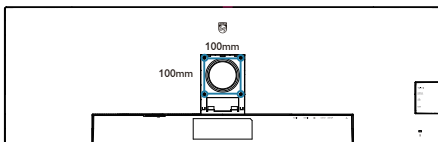


2. Press the release button to detach, then detach the neck from the monitor.



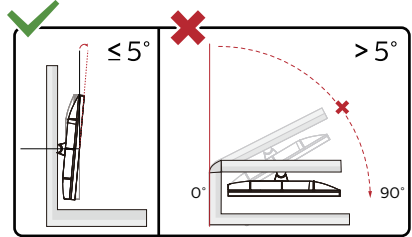
Note

This monitor accepts a 100mm x 100mm VESA-Compliant mounting interface. VESA Mounting Screw M4. Always contact manufacturer for wall-mount installation.



Warning

This product is curve design, when attach / detach the base, place the protective material under the monitor and do not press down the monitor to avoid the damage.



* Display design may differ from those illustrated in this manual.

Warning

- To avoid potential screen damage, such as panel peeling, ensure that the monitor does not tilt downward by more than -5 degrees.
- Do not press the screen while adjusting the angle of the monitor. Grasp only the bezel.

3. Image Optimization

3.1 SmartImage

1 What is it?

SmartImage provides presets that optimize display for different types of content, dynamically adjusting brightness, contrast, color, and sharpness in real-time. Whether you're working with text applications, displaying images, or watching a video, Philips SmartImage delivers great monitor performance.

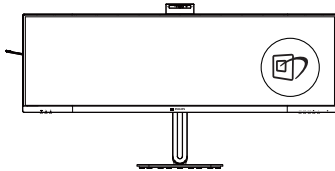
2 Why do I need it?




It is ideal to have a monitor that delivers an optimized display of all your favorite types of content. Our SmartImage software dynamically adjusts brightness, contrast, color, and sharpness in real-time to enhance your monitor viewing experience.

3 How does it work?

SmartImage is an exclusive, leading edge Philips technology that analyzes the content displayed on your screen. Based on a scenario you select, SmartImage dynamically enhances the contrast, color saturation and sharpness of images to enhance the contents being displayed - all in real time with the press of a single button.

4 How to enable SmartImage?

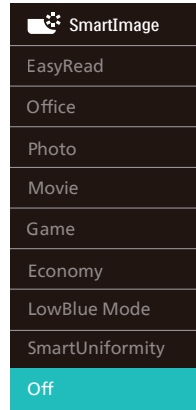


1. Press  to launch the SmartImage on screen display.
2. Keep pressing   to toggle among EasyRead, Office, Photo, Movie,

Game, Economy, LowBlue Mode, SmartUniformity and Off.

3. The SmartImage on screen display will remain on screen for 5 seconds, or you can also press "OK" to make confirmation.

There are multiple modes to select: EasyRead, Office, Photo, Movie, Game, Economy, LowBlue Mode, SmartUniformity and Off.



- **EasyRead:** Helps improve reading of text-based applications like PDF ebooks. By using a special algorithm that increases the contrast and boundary sharpness of text content. The display is optimized for a stress-free reading by adjusting the brightness, contrast, and color temperature of the monitor.
- **Office:** Enhances text and dampens brightness to increase readability and reduce eye strain. This mode significantly enhances readability and productivity when you're working with spreadsheets, PDF files, scanned articles or other general office applications.

- **Photo:** This profile combines color saturation, dynamic contrast and sharpness enhancement to display photos and other images with outstanding clarity in vibrant colors - all without artifacts and faded colors.
- **Movie:** Ramped up luminance, deepened color saturation, dynamic contrast, and razor sharpness displays every detail in darker areas of your videos without experiencing color washout.
- **Game:** Turn on over drive circuit for best response time, reduce jaggy edges for fast moving objects on screen, enhance contrast ratio for bright and dark scheme, this profile delivers the best gaming experience for gamers.
- **Economy:** Under this profile, brightness and contrast are adjusted and backlighting is fine-tuned to produce the right display for everyday office applications.
- **LowBlue Mode:** LowBlue Mode for easy-on-the-eyes productivity. Studies have shown that just as ultra-violet rays can cause eye damage, shortwave length blue light rays from LED displays can cause eye damage and affect vision over time. Developed for well-being, the Philips LowBlue Mode setting uses smart software technology to reduce harmful shortwave blue light..
- **SmartUniformity:** Fluctuations in brightness and color on different parts of a screen are a common phenomenon among LCD monitors. Typical uniformity is measured around 75-80%. By enabling Philips SmartUniformity feature, display uniformity is increased to above

95%. This produces more consistent and true images.

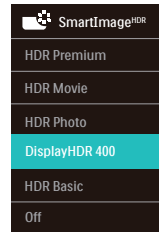
- **Off:** No optimization by SmartImage.



Note
Philips LowBlue mode, mode 2 compliance with TUV Low Blue Light certification, you can have this mode by simply press the hotkey , then press **▲** to select LowBlue Mode, see above SmartImage selection steps.

When this display receives HDR signal from the connected device, select a picture mode that best fits your needs.

There are multiple selections: HDR Premium, HDR Movie, HDR Photo, DisplayHDR 400, HDR Basic, Off.



- **HDR Premium:** Optimizes contrast and brightness for the most vivid and immersive visual experience.
- **HDR Movie:** Ideal setting for watching HDR movies. Deliver better contrast and brightness for a more realistic and immersing viewing experience.
- **HDR Photo:** Enhancing red, green, and blue for true-to-life visuals.
- **DisplayHDR 400:** Meet VESA DisplayHDR 400 standard.
- **HDR Basic:** Basic HDR setting for HDR content.
- **Off:** No optimization by SmartImage HDR.

Note

To switch off the HDR function, please disable the Input device and its content. Inconsistent HDR settings between the input device and monitor may cause unsatisfying images.

3.2 SmartContrast

1 What is it?

It is a unique technology that dynamically analyzes displayed content and automatically optimizes a monitor's contrast ratio for maximum visual clarity and viewing enjoyment.

2 Why do I need it?

Because SmartContrast offers the best visual clarity and viewing comfort for every type of content. It dynamically controls contrast and adjusts backlighting for bright gaming and video imagery. In addition, by reducing your monitor's power consumption, you save on energy costs and extend the lifetime of your monitor.

3 How does it work?

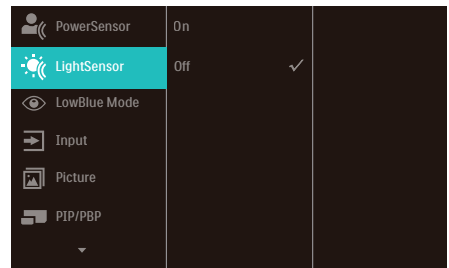
When you activate SmartContrast, it will analyze the content you are displaying in real time to adjust colors and control backlight intensity. This function will dynamically enhance contrast for a great entertainment experience when viewing videos or playing games.






3.3 LightSensor

1 What is it?

Light Sensor is a unique and intelligent way of optimizing picture quality by measuring and analyzing the incoming signal to automatically adjust picture quality settings. Light Sensor uses a sensor to adjust the picture brightness depending on the room light conditions.

2 How to enable LightSensor?



1. Press  button on the front bezel to enter OSD menu screen.
2. Press  or  button to select main menu [LightSensor], then press button **OK**.
3. Press  or  button to turn on or off the LightSensor.

3.4 HDR

HDR Settings in Windows 11/10 system.

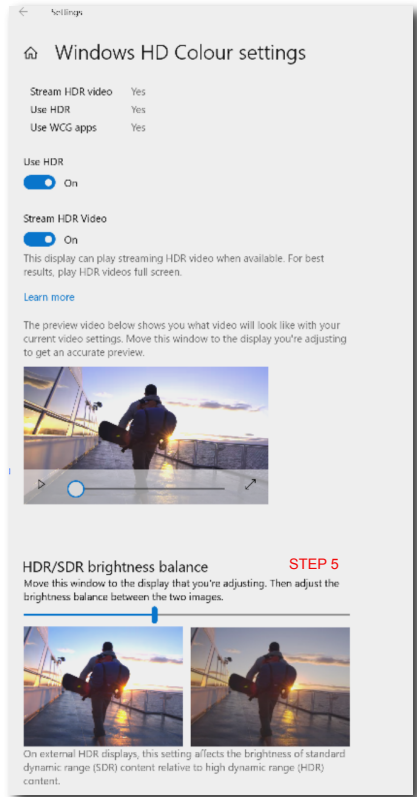
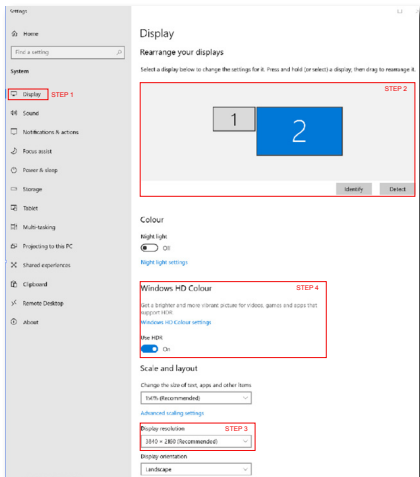
Steps

1. Right-click on the desktop, and enter Display settings.
2. Select the display/monitor.
3. Select an HDR-capable display under Rearrange your displays.
4. Select Windows HD Color settings.
5. Adjust Brightness for SDR content.

🔊 Note

Windows 10 edition is required. Always upgrade to the most updated version. The link below is for further information from the Microsoft official website.

<https://support.microsoft.com/en-au/help/4040263/windows-10-hdr-advanced-color-settings>



🔊 Note

To switch off HDR function, please disable from Input device and its content. Inconsistent HDR settings between input device and monitor may cause unsatisfying images.

4. Designs to prevent computer vision syndrome (CVS)

Philips monitor is designed to prevent eye strain caused by prolonged computer use.

Follow the below instructions and use a Philips monitor to efficiently reduce fatigue and maximize working productivity.

1. Appropriate environment lighting:

- Adjust the environment lighting similar to that of your screen brightness, avoid fluorescent lighting, and surfaces that don't reflect too much light.
- Adjust the brightness and contrast to the appropriate level.

2. Good working habits:

- Excessive usage of the monitor can cause eye discomfort, it's better to take shorter breaks more often at your workstation than longer breaks and less often; for example a 5-10 minute break after 50-60-minute continuous screen use is likely to be better than a 15-minute break every two hours.
- Looking at something varying distances after a long period of focusing on the screen.
- Gently closing and rolling your eyes to relax.
- Conscious blinking often while working.
- Gently stretch your neck, and slowly tilt your head forward, backward, and side for pain relief.

3. Ideal working posture

- Reposition your screen to the appropriate measurement according to your own height.

4. Choose a Philips monitor for viewing that is easy on the eyes.

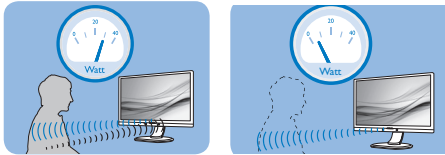
- Anti-glare screen: This feature efficiently reduces annoying and distracting reflections that is associated with eye fatigue.
- Flicker-free technology is designed to regulate brightness and reduce flicker for more comfortable viewing.
- LowBlue mode: Blue light may cause eye strains. This feature allows you to set different blue light filter levels for a variety of working situations.
- EasyRead mode for a paper-like reading experience, giving a more comfortable viewing experience while dealing with long documents on the screen.

5. PowerSensor™

1 How does it work?

- PowerSensor works on principle of transmission and reception of harmless “infrared” signals in order to detect user-presence.
- When the user is in front of the monitor, the monitor operates normally, at the predetermined settings that the user has set- i.e. brightness, contrast, color, etc
- Assuming that the monitor was set to 100% of brightness for example, when the user leaves his seat and is no longer in front of the monitor, the monitor automatically reduces the power consumption upto 80%.

User present in front User not present



Power consumption as illustrated above is for reference purpose only

2 Setting

Default settings

PowerSensor is designed to detect the presence of the user located between 30 and 100 cm (12 and 40 inches) from the display and within five degrees left or right of the monitor.

Custom settings

If you prefer to be in a position outside the perimeters listed above, choose a higher strength signal for optimal detection efficiency: The higher the setting, the stronger the detection signal. For maximum PowerSensor efficiency and proper detection, please position yourself directly in front of your monitor.

- If you choose to position yourself more than 100 cm or 40 inches from the monitor use the maximum

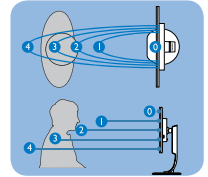
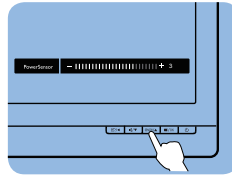
detection signal for distances up to 120 cm or 47 inches. (Setting 4)

- Since some dark colored clothing tends to absorb infrared signals even when the user is within 100 cm or 40 inches of the display, step up signal strength when wearing black or other dark clothes.

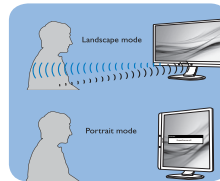
Hot key

(for selected models only)

Sensor distance



Landscape/Portrait mode



Above illustrations are for reference purpose only, may not reflect the exact display of this model.

3 How to adjust settings

If PowerSensor is not operating correctly inside or outside the default range, here's how to fine-tune detection:

- Enter to OSD menu.
- You will find the adjustment bar.
- Adjust the PowerSensor detection adjustment to Setting 4 and press OK.
- Test the new setup to see if PowerSensor properly detects you in your current position.
- PowerSensor function is designed to work in Landscape mode (horizontal position) only. After PowerSensor turn on it, it will automatically turn Off if the monitor is used in Portrait mode (90 degree/vertical position); it will automatically turn ON if

monitor is returned to its default Landscape position.

 **Note**

A manually selected PowerSensor mode will remain operational unless and until it is readjusted or the default mode is recalled. If you find that the PowerSensor is excessively sensitive to nearby motion for some reason, please adjust to a lower signal strength. Keep sensor lens clean, if the sensor lens is dirty, wipe it with alcohol to avoid reducing of distance detection .

6. Adaptive Sync



Adaptive Sync

PC gaming has long been an imperfect experience because GPUs and monitors update at different rates. Sometimes a GPU can render many new pictures during a single update of the monitor, and the monitor will show pieces of each picture as a single image. This is called “tearing.” Gamers can fix tearing with a feature called “v-sync,” but the image can become jerky as the GPU waits on the monitor to call for an update before delivering new pictures.

The responsiveness of mouse input and overall frames per second are reduced with v-sync, too. AMD Adaptive Sync technology eliminates all of these problems by letting the GPU update the monitor the moment a new picture is ready, leaving gamers with unbelievably smooth, responsive, tearing-free games.

- AMD Radeon R9 290
- AMD Radeon R9 285
- AMD Radeon R7 260X
- AMD Radeon R7 260
- Processor A-Series Desktop and Mobility APUs
 - AMD A10-7890K
 - AMD A10-7870K
 - AMD A10-7850K
 - AMD A10-7800
 - AMD A10-7700K
 - AMD A8-7670K
 - AMD A8-7650K
 - AMD A8-7600
 - AMD A6-7400K
 - AMD RX 6500 XT
 - AMD RX 6600 XT
 - AMD RX 6700 XT
 - AMD RX 6750 XT
 - AMD RX 6800
 - AMD RX 6800 XT
 - AMD RX 6900 XT

Followed by the graphic card that are compatible.

- Operating system
 - Windows 11/10/8.1/8
- Graphic Card: R9 290/300 Series & R7 260 Series
 - AMD Radeon R9 300 Series
 - AMD Radeon R9 Fury X
 - AMD Radeon R9 360
 - AMD Radeon R7 360
 - AMD Radeon R9 295X2
 - AMD Radeon R9 290X

7. Technical Specifications

Picture/Display	
Display Panel Type	VA
Backlight	W-LED
Panel Size	48.8" W (124 cm)
Aspect Ratio	32:9
Pixel Pitch	0.2328(W) x 0.2328(H) mm
Contrast ratio(typical)	3000:1
Native Resolution	5120 x 1440 @ 60 Hz
Maximum Resolution	5120 x 1440 @ 75 Hz
Viewing Angle	178° (H) / 178° (V) @ C/R > 10 (Typ.)
Picture Enhancement	SmartImage
Display Colors	1.07 B (8 bits + FRC)
Vertical Refresh Rate	30-75Hz (USB-C) 48-75Hz (HDMI/DP)
Horizontal Frequency	30-114KHz (DP/USB-C) 30-140KHz (HDMI)
sRGB	YES
SmartUniformity	YES
Delta E	YES
LowBlue Mode	YES
EasyRead	YES
Flicker Free	YES
Adaptive Sync	YES
HDR	VESA Certified DisplayHDR™ 400
Over-the-air firmware update	YES
Connectivity	
Signal Input source	HDMI1, HDMI2, DisplayPort, USBC (DP Alt mode)
Connectors	2 x HDMI 2.0 (HDCP 1.4, HDCP 2.2) 1 x DisplayPort 1.4 (HDCP 1.4, HDCP 2.2) 1 x USB-C (upstream, HDCP 1.4, HDCP 2.2) 1 x USB-B (upstream) 1 x USB-C (downstream) 2 x USB-A (downstream) 1 x RJ45, Ethernet LAN (USB 2.0: 10M/100M; USB 3.2: 1000M) 1 x Audio (In/Out): audio out / microphone in combo jack ¹
Sync input	Separate Sync

USB			
USB Ports	USBC1 x1 (upstream, typical PD 96W, DP Alt mode) ³ USBC2 x1(downstream, up to 15W) ² USB-B x1 (upstream) USB-A x2 (downstream with x1 fast charge B.C 1.2)		
Power Delivery	USBC1: USB PD version 3.0, typical 96W (5V/3A, 7V/3A, 9V/3A, 10V/3A, 12V/3A, 15V/3A, 20V/4.8A) ³ USBC2: Power supply up to 15W(5V/3A) ² USB-A: x1 fast charge B.C 1.2, up to 7.5W (5V/1.5A)		
Super Speed	USB-C/USB-A: USB 3.2 Gen1, 5 Gbps		
Convenience			
USER convenience			
Built-in speaker	3 W x 2		
Built-in Webcam	5.0 megapixel webcam with 2 microphone and LED indicator (for Windows Hello)		
MultiView	PIP/PBP mode, 2xdevices		
OSD Languages	English, German, Spanish, Greek, French, Italian, Hungarian, Dutch, Portuguese, Brasil Portuguese, Polish, Russian, Swedish, Finnish, Turkish, Czech, Ukrainian, Simplified Chinese, Traditional Chinese, Japanese, Korean		
Other Convenience	VESA mount(100x100mm), Kensington Lock		
Plug & Play Compatibility	DDC/CI, Mac OS X, sRGB, Windows 11/10/8.1/8		
Stand			
Tilt	-5 / +15 degree		
Swivel	-30 / +30 degree		
Height adjustment	150 mm		
Power			
Consumption	AC Input Voltage at 100VAC , 50Hz	AC Input Voltage at 115VAC , 60Hz	AC Input Voltage at 230VAC, 50Hz
Normal Operation	44.8 W (typ.)	45.1 W (typ.)	46.9 W (typ.)
Sleep (Standby mode)	0.3 W(typ.)	0.3 W(typ.)	0.3 W(typ.)
Off mode	0.3 W(typ.)	0.3 W(typ.)	0.3 W(typ.)
Off mode(AC switch)	0W(typ.)	0W(typ.)	0W(typ.)
Heat Dissipation*	AC Input Voltage at 100VAC , 50Hz	AC Input Voltage at 115VAC , 60Hz	AC Input Voltage at 230VAC , 50Hz
Normal Operation	152.90 BTU/hr (typ.)	153.92 BTU/hr (typ.)	160.07 BTU/hr (typ.)
Sleep (Standby mode)	1.02 BTU/hr(typ.)	1.02 BTU/hr(typ.)	1.02 BTU/hr(typ.)

Off mode	1.02 BTU/hr(typ.)	1.02 BTU/hr(typ.)	1.02 BTU/hr(typ.)
Off mode(AC switch)	0 BTU/hr(typ.)	0 BTU/hr(typ.)	0 BTU/hr(typ.)
On Mode(ECO mode)	39.0 W (typ.)		
PowerSensor	9.0 W (typ.)		
Power LED indicator	On mode: White, Standby/Sleep mode: White (blinking)		
Power Supply	Built-in, 100-240V AC, 50/60Hz		

Dimensions

Product with stand (WxHxD)	1193 x 583 x 268 mm
Product without stand (WxHxD)	1193 x 373 x 164 mm
Product with packaging (WxHxD)	1290 x 300 x 475 mm

Weight

Product with stand	15.21 kg
Product without stand	11.58 kg
Product with packaging	19.38 kg

Operating Condition

Temperature range (operation)	0°C to 40 °C
Relative humidity (operation)	20% to 80%
Atmospheric pressure (operation)	700 to 1060hPa
Temperature range (Non-operation)	-20°C to 60°C
Relative humidity (Non-operation)	10% to 90%
Atmospheric pressure (Non-operation)	500 to 1060hPa

Environmental and energy

ROHS	YES
Packaging	100% recyclable
Specific Substances	100% PVC BFR free housing

Cabinet

Color	Black
Finish	Texture

¹ The headset also supports a microphone which comply CTIA and OMTP standard.

² The USB-C2 port provides downstream a data transfer and 15W of power.

³ The USB-C1 port provides data, video transfer, and power delivery 96W (typical) up to 100W depending on the device .


Note

1. The data mentioned in this section is subject to change without notice. Go to www.philips.com/support to download the latest version of the leaflet.
2. The Power delivery function is also based on the PCs capabilities.
3. SmartUniformity and Delta E information are included in the sheets located in the box.
4. In order to update the monitor's firmware to the latest version, Please download the SmartControl software from Philips website. It is necessary to be connected to a network when updating the firmware on SmartControl over-the-air (OTA).

7.1 Resolution & Preset Modes

H. freq (kHz)	Resolution	V. freq (Hz)
31.47	720 x 400	70.09
31.47	640 x 480	59.94
35.00	640 x 480	66.67
37.86	640 x 480	72.81
37.50	640 x 480	75.00
37.88	800 x 600	60.32
46.88	800 x 600	75.00
48.36	1024 x 768	60.00
60.02	1024 x 768	75.03
44.77	1280x 720	59.86
63.89	1280 x 1024	60.02
79.98	1280 x 1024	75.03
55.94	1440 x 900	59.89
70.64	1440 x 900	74.98
65.29	1680 x 1050	59.95
67.50	1920 x 1080	60.00
66.64	2560 x 1080	59.98
88.79	2560 x 1440	59.95
67.50	2560 x 1440	30.00 (USB C)
133.32	2560 x 1440 PBP mode	60.00
66.625	3840 x 1080	60.00
43.8	5120 x 1440	30.00 (USB C)
88.83	5120 x 1440	60.00
104.12	5120 x 1440	70.00
111.08	5120 x 1440	75.000

Note

1. Please notice that your display works best at native resolution of 5120 x 1440 @ 60Hz. For best display quality, please follow this resolution recommendation. Recommended resolution HDMI 2.0/DP/USB C: 5120 x 1440 @ 60Hz. If your display is not on the native resolution when connecting to USB C or DP port, please adjust resolution to the optimal state: 5120 x 1440 @ 60 Hz from your PC.
2. The factory default setting HDMI supports to the resolution 5120 x 1440 @ 60Hz.
3. The USB hub default setting of USB C input for this monitor is "High Data Speed". The maximum resolution supported depends on your graphic card capability. If your PC doesn't support HBR 3, select "High Resolution" in USB Setting, then the maximum resolution supported will be 5120 x 1440 @ 75Hz (HDR). Press  button > USB Setting > USB > High Resolution.

8. Power Management

If you have a VESA DPM compliance display card or software installed on your PC, the monitor can automatically reduce its power consumption when not in use. If an input from a keyboard, mouse, or other input device is detected, the monitor will 'wake up' automatically. The following table shows the power consumption and signaling of this automatic power saving feature:

Power Management Definition					
VESA Mode	Video	H-sync	V-sync	Power Used	LED Color
Active	ON	Yes	Yes	45.1 W (typ.) 258.3 W (max.)	White
Sleep (Standby mode)	OFF	No	No	0.3 W (typ.)	White (blink)
Off mode (AC switch)	OFF	-	-	0W (AC switch)	OFF

The following setup is used to measure power consumption on this display.

- Native resolution: 5120 x 1440
- Contrast: 50%
- Brightness: 60%
- Color temperature: 6500k with full white pattern
- Audio and USB Inactive (Off)

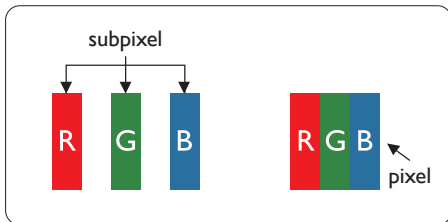
Note

This data is subject to change without notice.

9. Customer care and warranty

9.1 Philips' Flat Panel Displays Pixel Defect Policy

Philips strives to deliver the highest quality products. We use some of the industry's most advanced manufacturing processes and practice stringent quality control. However, pixel or sub-pixel defects on the TFT Monitor panels used in flat panel monitors are sometimes unavoidable. No manufacturer can guarantee that all panels will be free from pixel defects, but Philips guarantees that any monitor with an unacceptable number of defects will be repaired and/or replaced under warranty. This notice explains the different types of pixel defects and defines acceptable defect levels for each type. To qualify for repair or replacement under warranty, the number of pixel defects on a TFT Monitor panel must exceed these acceptable levels. For example, no more than 0.0004% of the sub-pixels on a monitor may be defective. Furthermore, Philips sets even higher quality standards for certain types or combinations of pixel defects that are more noticeable than others. This policy is valid worldwide.



Pixels and Sub pixels

A pixel, or picture element, is composed of three sub-pixels in the primary colors of red, green, and blue. Many pixels

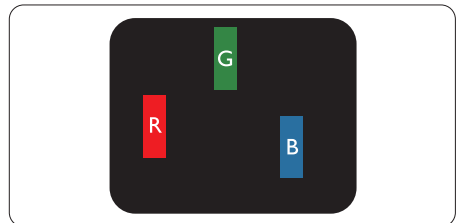
together form an image. When all the sub-pixels of a pixel are lit, the three colored sub-pixels together appear as a single white pixel. When all are dark, the three colored sub-pixels together appear as a single black pixel. Other combinations of lit and dark sub-pixels appear as single pixels of other colors.

Types of Pixel Defects

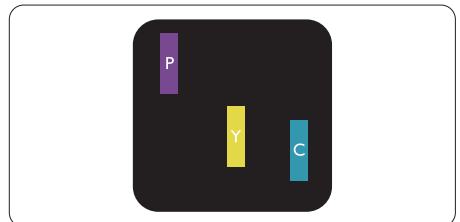
Pixel and sub-pixel defects appear on the screen in different ways. There are two categories of pixel defects and several types of sub-pixel defects within each category.

Bright Dot Defects

Bright dot defects appear as pixels or sub-pixels that are always lit or 'on'. Meaning, a bright dot is a sub-pixel that stands out on the screen when the monitor displays a dark pattern. There are three types of bright dot defects: One lit red, green, or blue sub-pixel.

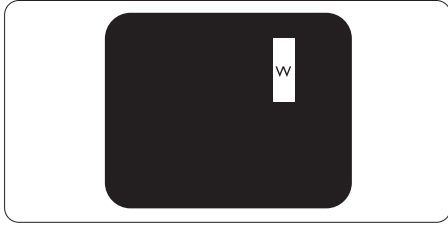


One lit red, green or blue sub pixel.



Two adjacent lit sub-pixels:

- Red + Blue = Purple
- Red + Green = Yellow
- Green + Blue = Cyan (Light Blue)

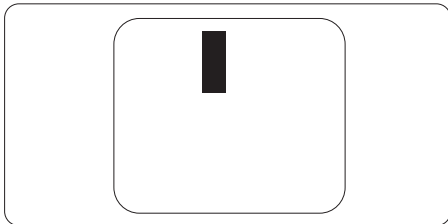


Three adjacent lit sub pixels (one white pixel).

Note
A red or bright blue dot must be more than 50 percent brighter than neighboring dots, while a bright green dot is 30 percent brighter than neighboring dots.

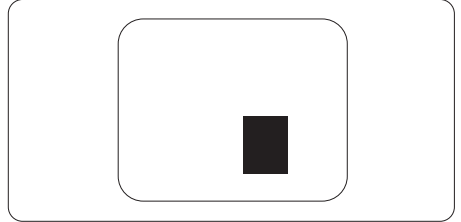
Black Dot Defects

Black dot defects appear as pixels or sub-pixels that are always dark or 'off'. Meaning, a dark dot is a sub-pixel that stands out on the screen when the monitor displays a light pattern. These are the types of black dot defects.



Proximity of Pixel Defects

Because pixel and sub pixels defects of the same type that are near to one another may be more noticeable, Philips also specifies tolerances for the proximity of pixel defects.



Pixel Defect Tolerances

To qualify for repair or replacement due to pixel defects during the warranty period, a TFT Monitor panel in a Philips flat panel monitor must have pixel or sub-pixel defects exceeding the tolerances listed in the following tables.

BRIGHT DOT DEFECTS	ACCEPTABLE LEVEL
1 lit subpixel	2
2 adjacent lit subpixels	1
3 adjacent lit subpixels (one white pixel)	0
Distance between two bright dot defects*	>15mm
Total bright dot defects of all types	2
BLACK DOT DEFECTS	ACCEPTABLE LEVEL
1 dark subpixel	3 or fewer
2 adjacent dark subpixels	2 or fewer
3 adjacent dark subpixels	1
Distance between two black dot defects*	>15mm
Total black dot defects of all types	3 or fewer
TOTAL DOT DEFECTS	ACCEPTABLE LEVEL
Total bright or black dot defects of all types	5 or fewer

 Note

1 or 2 adjacent sub pixel defects = 1 dot defect

9.2 Customer Care & Warranty

For warranty coverage information and additional support requirements valid for your region, please visit www.philips.com/support website for details or contact your local Philips Customer Care Center.

For an extended warranty, if you would like to extend your general warranty period, an Out of Warranty service package is offered via our Certified Service Center.

For the Warranty Period please refer to Warranty Statement in the Important information manual.

If you wish to make use of this service, please be sure to purchase the service within 30 calendar days of your original purchase date. During the extended warranty period, the service includes pickup, repair, and return service, however, the user will be responsible for all costs accrued.

If the Certified Service Partner cannot perform the required repairs under the offered extended warranty package, we will find alternative solutions for you, if possible, up to the extended warranty period you have purchased.

Please contact our Philips Customer Service Representative or local contact center (by Consumer care number) for more details.

Philips Customer Care Center number listed below.

• Local Standard Warranty Period	• Extended Warranty Period	• Total Warranty Period
• Depend on different Regions	• + 1 Year	• Local Standard warranty period +1
	• + 2 Years	• Local Standard warranty period +2
	• + 3 Years	• Local Standard warranty period +3

**Proof of original purchase and extended warranty purchase required.

Note

Please refer to the Important information manual for the regional service hotline, which is available on the Philips website support page.

10. Troubleshooting & FAQs

10.1 Troubleshooting

This page deals with problems that can be corrected by a user. If the problem persists after you have tried these solutions, contact a Philips customer service representative.

1 Common Problems

No Picture (Power LED not lit)

- Make sure the power cord is plugged into the power outlet and the back of the monitor.
- First, ensure that the power button on the front of the display is in the OFF position, then press it to the ON position.

No Picture (Power LED is White)

- Make sure the computer is turned on.
- Make sure the signal cable is properly connected to your computer.
- Make sure the monitor cable has no bent pins on the connecting side. If yes, repair or replace the cable.
- The Energy Saving feature may be activated. Screen says.

Screen says



Check cable connection

- Make sure the display cable is properly connected to your computer. (Also refer to the Quick Start Guide).

- Check to see if the display cable has bent pins.
- Make sure the computer is turned on.

Visible signs of smoke or sparks

- Do not perform any troubleshooting steps
- Disconnect the monitor from the mains power source immediately for safety
- Contact Philips customer service representative immediately.

2 Imaging Problems

Image appears blurred, indistinct or too dark

- Adjust the contrast and brightness on On-Screen Display.

An "after-image", "burn-in" or "ghost image" remains after the power has been turned off.

- Uninterrupted display of still or static images over an extended period may cause "burn-in", also known as "after-imaging" or "ghost imaging", on your screen. "Burn-in", "after-imaging", or "ghost imaging" is a well-known phenomenon in QD OLED panel technology. In most cases, the "burn-in" "after-imaging" or "ghost imaging" will disappear gradually over some time after the power has been switched off.
- Always activate a moving screen saver program when you leave your display unattended.
- Always activate a periodic screen refresh application if your LCD display will display unchanging static content.
- Failure to activate a screen saver, or a periodic screen refresh application

may result in severe “burn-in” “after-imaging” or “ghost imaging” symptoms that will not disappear and cannot be repaired. The damage mentioned above is not covered under your warranty.

The image appears distorted or the text is fuzzy or blurred.

- Set the PC's display resolution to the same mode as the monitor's recommended screen native resolution.

Green, red, blue, dark, and white dots appear on the screen

- The remaining dots are a normal characteristic of the liquid crystal used in today's technology, Please refer to the pixel policy for more detail.

* The "power on" light is too strong and is disturbing

- You can adjust the “power on” light using the power LED Setup in OSD Main Controls.

For further assistance, refer to the Service contact information listed in the Important information manual and contact a Philips customer service representative.

* [Functionality different according to display.](#)

10.2 General FAQs

Q1: When I install my display what should I do if the screen shows 'Cannot display this video mode'?

Ans.: Recommended resolution for this display: 5120 x 1440.

- Unplug all cables, then connect your PC to the display that you used previously.
- In the Windows Start Menu, select Settings/Control Panel. In the Control Panel Window, select the Display icon. Inside the Display Control Panel, select the 'Settings' tab. Under the setting tab, in the box labeled 'desktop area', move the sidebar to 5120 x 1440 pixels.
- Open 'Advanced Properties' and set the Refresh Rate to 60 Hz, then click OK.
- Restart your computer and repeat steps 2 and 3 to verify that your PC is set at 5120 x 1440.
- Shut down your computer, disconnect your old display and reconnect your Philips LCD display.
- Turn on your display and then turn on your PC.

Q2: What is the recommended refresh rate for LCD display?

Ans.: Recommended refresh rate in LCD displays is 60 Hz, In case of any disturbance on screen, you can set it up to 75 Hz to see if that removes the disturbance.

Q3: What are the .inf and .icm files? How do I install the drivers (.inf and .icm)?


Ans.: These are the driver files for your monitor. Your computer may ask you for monitor drivers

(.inf and .icm files) when you first install your monitor. Follow the instructions in your user manual, and monitor drivers (.inf and .icm files) will be installed automatically.

Q4: How do I adjust the resolution?

Ans.: Your video card/graphic driver and display together determine the available resolutions. You can select the desired resolution under Windows® Control Panel with the "Display properties".

Q5: What if I get lost when I am making display adjustments via OSD?

Ans.: Simply press  button, then select 'Setup' > 'Reset' to recall all the original factory settings.

Q6: Is the LCD screen resistant to scratches?

Ans.: In general it is recommended that the panel surface is not subjected to excessive shocks and is protected from sharp or blunt objects. When handling the display, make sure that there is no pressure or force applied to the panel surface side. This may affect your warranty conditions.

Q7: How should I clean the LCD surface?

Ans.: For normal cleaning, use a clean, soft cloth. For extensive cleaning, please use isopropyl alcohol. Do not use other solvents such as ethyl alcohol, ethanol, acetone, hexane, etc.

Q8: Can I change the color setting of my display?

Ans.: Yes, you can change your color setting through OSD control as the following procedures,

- Press "OK" to show the OSD (On Screen Display) menu
- Press "Down Arrow" to select the option "Color" then press "OK" to enter color setting, there are three settings as below.
 1. Color Temperature: Native, 5000K, 6500K, 7500K, 8200K, 9300K and 11500K. With settings in the 5000K range the panel appears "warm, with a red-white color tone", while a 11500K temperature yields "cool, bluishwhite toning".
 2. sRGB: This is a standard setting for ensuring correct exchange of colors between different device (e.g. digital cameras, displays, printers, scanners, etc).
 3. User Define: The user can choose his/her preference color setting by adjusting red, green, blue color.

 **Note**

A measurement of the color of light radiated by an object while it is being heated. This measurement is expressed in terms of absolute scale, (degrees Kelvin). Lower Kelvin temperatures such as 2004K are red; higher temperatures such as 9300K are blue. The neutral temperature is white, at 6504K.

Q9: Can I connect my LCD display to any PC, workstation or Mac?

Ans.: Yes. All Philips LCD displays are fully compatible with standard PCs, Macs and workstations. You may need a cable adapter to connect the display to your Mac system. Please contact your

Philips sales representative for more information.

Q10: Are Philips LCD displays Plug-and-Play?

Ans.: Yes, the displays are Plug-and-Play compatible with Windows 11/10/8.1/8

Q11: What is Image Sticking, or Image Burn-in, or After Image, or Ghost Image in LCD panels?

Ans.: Uninterrupted display of still or static images over an extended period may cause "burn in", also known as "after-imaging" or "ghost imaging", on your screen. "Burn-in", "after-imaging", or "ghost imaging" is a well-known phenomenon in LCD panel technology. In most cases, the "Burn-in" or "after-imaging" or "ghost imaging" will disappear gradually over a period of time after the power has been switched off.

Always activate a moving screen saver program when you leave your display unattended.

Always activate a periodic screen refresh application if your LCD display will display unchanging static content.

Warning



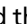

Failure to activate a screen saver, or a periodic screen refresh application may result in severe "burn-in" "after-image" or "ghost image" symptoms that will not disappear and cannot be repaired. The damage mentioned above is not covered under your warranty.

Q12: Why is my Display not showing sharp text, and is displaying jagged characters?

Ans.: Your LCD display works best at its native resolution of 5120 x 1440.

For best display, please use this resolution.

Q13: How to unlock/lock my hot key?

Ans.: To lock the OSD, press and hold the /OK button while the monitor is off and then press  button to turn the monitor on. To un-lock the OSD, press and hold the /OK button while the monitor is off and then press  button to turn the monitor on.



Display controls unlocked



Display controls locked

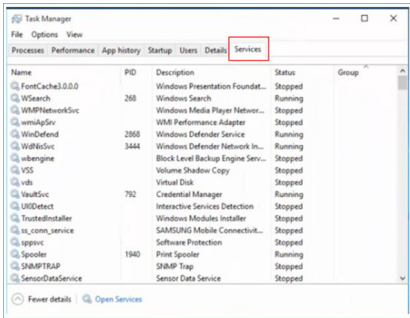
Q14: Where can I find Important Information manual mentioned in EDFU?

Ans.: Important Information manual can be download on the Philips website support page.

Q15: Why cannot detect my monitor's Windows Hello webcam, and also Face Recognition option is greyed out?

Ans.: To fix this issue, you need to proceed following steps to detect the webcam device again:


1. Press Ctrl + Shift + ESC to launch the Microsoft Windows Task Manager.
2. Select 'Services' tag.



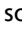
3. Scroll down and select 'WbioSrv' (Windows Biometric Service). If the status shows 'Running', right click to stop the service first, then restart the service manually.
4. Then go back to sign-in options menu to set up Window Hello Webcam.

10.3 Multiview FAQs

Q1: Can I enlarge the PIP sub-window?

Ans.: Yes, there are 3 sizes to select: [Small], [Middle], [Large]. You can press  to enter OSD menu. Select your preferred [PIP Size] option from the [PIP / PBP] main menu.

Q2: How to listen to Audio, independent of a video?

Ans.: Normally the audio source is linked to the main picture source. If you want to change audio-source input, you can press  to enter OSD menu. Select your preferred [Audio Source] option from the [Audio] main menu.

Please note that the next time you turn on your display, the display will by default select the audio source you chose last time. In case you want to change it again, you need to go through the above steps to select your new preferred audio source, which then will become the "default" mode.

Q3: Why the sub-windows flickers when I enable PIP/PBP.

Ans: It's because the sub-windows video source is interlace timing (i-timing), please change sub-window signal source to be progressive timing (P-timing).



2023 © TOP Victory Investments Ltd. All rights reserved.

This product has been manufactured by and is sold under the responsibility of Top Victory Investments Ltd., and Top Victory Investments Ltd. is the warrantor in relation to this product. Philips and the Philips Shield Emblem are registered trademarks of Koninklijke Philips N.V. and are used under license.

Specifications are subject to change without notice.

Version: 49B2U5900E1WWT