

**PRIME /
ProArt /
TUF GAMING
AMD 600
Series**

BIOS Manual

ASUS

Motherboard

E21968
Revised Edition V3
April 2023

Copyright© 2023 ASUSTeK COMPUTER INC. All Rights Reserved.

No part of this manual, including the products and software described in it, may be reproduced, transmitted, transcribed, stored in a retrieval system, or translated into any language in any form or by any means, except documentation kept by the purchaser for backup purposes, without the express written permission of ASUSTeK COMPUTER INC. ("ASUS").

Product warranty or service will not be extended if: (1) the product is repaired, modified or altered, unless such repair, modification or alteration is authorized in writing by ASUS; or (2) the serial number of the product is defaced or missing.

ASUS PROVIDES THIS MANUAL "AS IS" WITHOUT WARRANTY OF ANY KIND, EITHER EXPRESS OR IMPLIED, INCLUDING BUT NOT LIMITED TO THE IMPLIED WARRANTIES OR CONDITIONS OF MERCHANTABILITY OR FITNESS FOR A PARTICULAR PURPOSE. IN NO EVENT SHALL ASUS, ITS DIRECTORS, OFFICERS, EMPLOYEES OR AGENTS BE LIABLE FOR ANY INDIRECT, SPECIAL, INCIDENTAL, OR CONSEQUENTIAL DAMAGES (INCLUDING DAMAGES FOR LOSS OF PROFITS, LOSS OF BUSINESS, LOSS OF USE OR DATA, INTERRUPTION OF BUSINESS AND THE LIKE), EVEN IF ASUS HAS BEEN ADVISED OF THE POSSIBILITY OF SUCH DAMAGES ARISING FROM ANY DEFECT OR ERROR IN THIS MANUAL OR PRODUCT.

SPECIFICATIONS AND INFORMATION CONTAINED IN THIS MANUAL ARE FURNISHED FOR INFORMATIONAL USE ONLY, AND ARE SUBJECT TO CHANGE AT ANY TIME WITHOUT NOTICE, AND SHOULD NOT BE CONSTRUED AS A COMMITMENT BY ASUS. ASUS ASSUMES NO RESPONSIBILITY OR LIABILITY FOR ANY ERRORS OR INACCURACIES THAT MAY APPEAR IN THIS MANUAL, INCLUDING THE PRODUCTS AND SOFTWARE DESCRIBED IN IT.

Products and corporate names appearing in this manual may or may not be registered trademarks or copyrights of their respective companies, and are used only for identification or explanation and to the owners' benefit, without intent to infringe.

Contents

1.	Knowing BIOS	4
2.	BIOS setup program	5
2.1	EZ Mode	6
2.2	Advanced Mode	7
2.3	Qfan Control	10
3.	My Favorites	12
4.	Main menu	14
5.	Ai Tweaker menu	16
6.	Advanced menu	31
6.1	Trusted Computing	32
6.2	AMD fTPM configuration	33
6.3	AMD CBS	34
6.4	CPU Configuration	49
6.5	PCI Subsystem Settings	50
6.6	USB Configuration	51
6.7	Network Stack Configuration	52
6.8	NVMe Configuration	52
6.9	HDD/SSD SMART Information	53
6.10	SATA Configuration	54
6.11	APM Configuration	55
6.12	Onboard Devices Configuration	56
6.13	NB Configuration	59
6.14	AMD PBS	60
6.15	AMD Overclocking	62
7.	Monitor menu	75
8.	Boot menu	82
9.	Tool menu	87
9.1	ASUS EZ Flash 3 Utility	88
9.2	ASUS Secure Erase	88
9.3	ASUS User Profile	89
9.4	ASUS SPD Information	90
9.5	ASUS Armoury Crate	90
9.6	MyASUS	91
10.	Exit menu	92
11.	Updating BIOS	93
11.1	ASUS EZ Flash 3	93
11.2	ASUS CrashFree BIOS 3	94

BIOS Setup

1. Knowing BIOS



The new ASUS UEFI BIOS is a Unified Extensible Interface that complies with UEFI architecture, offering a user-friendly interface that goes beyond the traditional keyboard-only BIOS controls to enable a more flexible and convenient mouse input. You can easily navigate the new UEFI BIOS with the same smoothness as your operating system. The term "BIOS" in this user manual refers to "UEFI BIOS" unless otherwise specified.

BIOS (Basic Input and Output System) stores system hardware settings such as storage device configuration, overclocking settings, advanced power management, and boot device configuration that are needed for system startup in the motherboard CMOS. In normal circumstances, the default BIOS settings apply to most conditions to ensure optimal performance. **DO NOT change the default BIOS settings** except in the following circumstances:

- An error message appears on the screen during the system bootup and requests you to run the BIOS Setup.
- You have installed a new system component that requires further BIOS settings or update.



Inappropriate BIOS settings may result in instability or boot failure. **We strongly recommend that you change the BIOS settings only with the help of a trained service personnel.**



- When downloading or updating the BIOS file for your motherboard, rename it as **XXXXX.CAP** or launch the **BIOSRenamer.exe** application to automatically rename the file. The name of the CAP file varies depending on models. Refer to the user manual that came with your motherboard for the name.
 - The screenshots in this manual are for reference only, please refer to the latest BIOS version for settings and options.
 - BIOS settings and options may vary due to different BIOS release versions or CPU installed. Please refer to the latest BIOS version for settings and options.
-

2. BIOS setup program

Use the BIOS Setup to update the BIOS or configure its parameters. The BIOS screen include navigation keys and brief onscreen help to guide you in using the BIOS Setup program.

Entering BIOS at startup

To enter BIOS Setup at startup, press <Delete> or <F2> during the Power-On Self Test (POST). If you do not press <Delete> or <F2>, POST continues with its routines.

Entering BIOS Setup after POST

To enter BIOS Setup after POST:

- Press <Ctrl>+<Alt>+<Delete> simultaneously.
- Press the reset button on the system chassis.
- Press the power button to turn the system off then back on. Do this option only if you failed to enter BIOS Setup using the first two options.

After doing either of the three options, press <Delete> key to enter BIOS.



-
- The BIOS setup screens shown in this section are for reference purposes only, and may not exactly match what you see on your screen.
 - Ensure that a USB mouse is connected to your motherboard if you want to use the mouse to control the BIOS setup program.
 - If the system becomes unstable after changing any BIOS setting, load the default settings to ensure system compatibility and stability. Select the **Load Optimized Defaults** item under the **Exit** menu or press hotkey <F5>. See section **Exit menu** for details.
 - If the system fails to boot after changing any BIOS setting, try to clear the CMOS and reset the motherboard to the default value. See your motherboard manual for information on how to erase the RTC RAM.
 - The BIOS setup program does not support Bluetooth devices.
-

BIOS menu screen

The BIOS Setup program can be used under two modes: **EZ Mode** and **Advanced Mode**. You can change modes from **Setup Mode** in **Boot menu** or by pressing the <F7> hotkey.



The BIOS settings and options for each motherboard may differ slightly with the options in this manual. Please refer to the BIOS of your motherboard for the settings and options.

2.1 EZ Mode

The EZ Mode provides you an overview of the basic system information, and allows you to select the display language, system performance, mode and boot device priority. To access the Advanced Mode, select **Advanced Mode(F7)** or press the <F7> hotkey for the advanced BIOS settings.



The default screen for entering the BIOS setup program can be changed. Refer to the **Setup Mode** item in section **Boot menu** for details.

Displays a quick overview of the system status

Selects the display language of the BIOS setup program

Search

AURA

ReSize BAR

Displays the system properties of the selected mode. Click < or > to switch modes

Information
ProArt X670E-CREATOR WIFI BIOS Ver. 0213
AMD Eng Sample: 100-00000593-20_Y
Speed: 4400 MHz
Memory: 8192 MB (DDR5 4800MHz)

CPU Temperature
54°C

CPU Core Voltage
1.270 V

Motherboard Temperature
31°C

AI Overclocking
Click the icon to specify your preferred system settings for a power-saving system environment

Normal

DRAM Status
DIMM_A1: N/A
DIMM_A2: Micron Technology 8192MB 4800MHz
DIMM_B1: N/A
DIMM_B2: N/A

Storage Information

Boot Priority
Choose one and drag the items. **Switch all**

AEMP
Disabled

FAN Profile

- CPU FAN 4804 RPM
- CHA1 FAN N/A
- CHA2 FAN N/A
- CHA3 FAN N/A
- CHA4 FAN N/A
- CHA5 FAN N/A
- CPU OPT FAN N/A
- CHA2 FAN N/A
- CHA4 FAN N/A
- AIO PUMP N/A

CPU FAN
QFan Control

Default(F5)

Save & Exit(F10)

Advanced Mode(F7)

Boot Menu(F8)

Loads optimized default settings

Saves the changes and resets the system

Click to go to Advanced mode

Click to display boot devices

Selects the boot device priority

Displays the CPU Fan's speed. Click the button to manually tune the fans



The boot device options vary depending on the devices you installed to the system.

2.2 Advanced Mode

The Advanced Mode provides advanced options for experienced end-users to configure the BIOS settings. The figure below shows an example of the Advanced Mode. Refer to the following sections for the detailed configurations.



To switch from EZ Mode to Advanced Mode, click **Advanced Mode(F7)** or press the <F7> hotkey.

The screenshot shows the ASUS UEFI BIOS Utility in Advanced Mode. The interface includes a menu bar at the top with options like Language, MyFavorite(F3), Qfan Control(F6), Search(F9), AURA(F4), and ReSize BAR. A scroll bar is visible on the right side. The main area displays various configuration fields such as Target CPU Speed, Target DRAM Frequency, Ai Overclock Tuner, Memory Frequency, FCLK Frequency, Core Performance Boost, CPU Core Ratio, CPU Core Ratio (Per CCX), DRAM Timing Control, Precision Boost Overdrive, and DIGI + VRM. A Hardware Monitor section on the right provides system status and prediction, including CPU frequency, temperature, BCLK, core voltage, ratio, memory frequency, MC Volt, capacity, and voltage levels. The bottom of the screen shows a footer with 'Version 2.22.1284 Copyright (C) 2022 AMI' and navigation options like 'Last Modified', 'EzMode(F7)', and 'Hot Keys'. Red boxes and labels highlight specific UI elements: Configuration fields, Pop-up Menu, Menu bar, Language, MyFavorite(F3), Qfan Control(F6), Search(F9), AURA(F4), ReSize BAR, Scroll bar, Hardware Monitor, CPU, Frequency, Temperature, 4400 MHz, 46°C, BCLK, Core Voltage, 100.00 MHz, 1.243 V, Ratio, 44x, Memory, Frequency, MC Volt, 4800 MHz, 1.110 V, Capacity, 8192 MB, Voltage, +12V, +5V, 12.096 V, 4.960 V, +3.3V, 3.296 V, Last Modified, EzMode(F7), Hot Keys, General help, Last modified settings, Go back to EZ Mode, Hot keys, Submenu items, and Menu items.

Displays a quick overview of the system status and prediction

Menu bar

The menu bar on top of the screen has the following main items:

My Favorites	For saving the frequently-used system settings and configuration.
Main	For changing the basic system configuration
Ai Tweaker	For changing the overclocking settings
Advanced	For changing the advanced system settings
Monitor	For displaying the system temperature, power status, and changing the fan settings.
Boot	For changing the system boot configuration
Tool	For configuring options for special functions
Exit	For selecting the exit options and loading default settings

Menu items

The highlighted item on the menu bar displays the specific items for that menu. For example, selecting **Main** shows the Main menu items.

The other items (My Favorites, Ai Tweaker, Advanced, Monitor, Boot, Tool, and Exit) on the menu bar have their respective menu items.

Submenu items

An arrow sign (>) before each item on any menu screen means that the item has a submenu. To display the submenu, select the item and press <Enter>.

Language

This button above the menu bar contains the languages that you can select for your BIOS. Click this button to select the language that you want to display in your BIOS screen.

MyFavorite(F3)

This button above the menu bar shows all BIOS items in a Tree Map setup. Select frequently-used BIOS settings and save it to **My Favorites** menu. You may also access this item by pressing the <F3> key on the keyboard.



Refer to section **My Favorites** for more information.

Qfan Control(F6)

This button above the menu bar displays the current settings of your fans. Use this button to manually tweak the fans to your desired settings. You may also access this item by pressing the <F6> key on the keyboard.



Refer to section **Qfan Control** for more information.

Search(F9)

This button allows you to search for BIOS items by entering its name, enter the item name to find the related item listing. You may also access this item by pressing the <F9> key on the keyboard.

AURA(F4)

This button allows you to turn the RGB LED lighting or functional LED on or off. You may also access this item by pressing the <F4> key on the keyboard.

[All On]: All LEDs (Aura or Functional) will be enabled.

[Stealth Mode]: All LEDs (Aura and Functional) will be disabled.

[Aura Only]: Aura LEDs will be enabled and functional LEDs will be disabled.

[Aura Off]: Aura LEDs will be disabled, however functional LEDs will still be enabled.

ReSize BAR

This button allows you to turn ReSize BAR function on or off.

[On] Enable ReSize BAR support to fully harness GPU memory. CSM (Compatibility Support Module) will be disabled.

[Off] ReSize BAR support will be disabled.

Hot keys

This button at the bottom right contains the navigation keys for the BIOS setup program. Use the navigation keys to select items in the menu and change the settings.

Scroll bar

A scroll bar appears on the right side of a menu screen when there are items that do not fit on the screen. Press the Up/Down arrow keys or <Page Up> / <Page Down> keys to display the other items on the screen.

General help

At the bottom of the menu screen is a brief description of the selected item. Use <F12> key to capture the BIOS screen and save it to the removable storage device.

Configuration fields

These fields show the values for the menu items. If an item is user-configurable, you can change the value of the field opposite the item. You cannot select an item that is not user-configurable.

A configurable field is highlighted when selected. To change the value of a field, select it and press <Enter> to display a list of options.

Last Modified button

This button shows the items that you last modified and saved in BIOS Setup.

2.3 Qfan Control

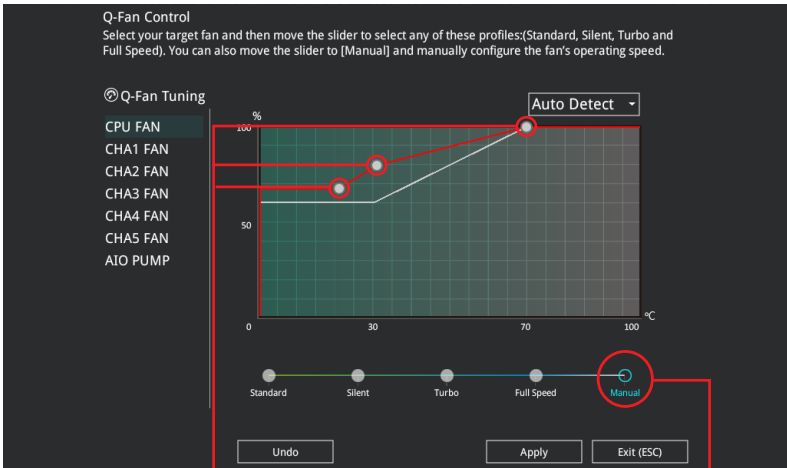
The Qfan Control allows you to set a fan profile or manually configure the operating speed of your CPU and chassis fans.

The screenshot shows the Q-Fan Control interface with the following elements and annotations:

- Q-Fan Control** header and introductory text: "Select your target fan and then move the slider to select any of these profiles: (Standard, Silent, Turbo and Full Speed). You can also move the slider to [Manual] and manually configure the fan's operating speed."
- Q-Fan Tuning** section with a list of fans: CPU FAN, CHA1 FAN, CHA2 FAN, CHA3 FAN, CHA4 FAN, CHA5 FAN, and AIO PUMP. A red box highlights this list with the annotation: "Click to select a fan to be configured".
- Graph**: A line graph showing fan speed (%) on the y-axis (0 to 100) and temperature (°C) on the x-axis (0 to 100). A yellow curve represents the fan speed profile. A red box highlights the graph area with the annotation: "Click to activate PWM Mode".
- Mode Selection**: A dropdown menu with options: Auto Detect, DC Mode, and PWM Mode. A red box highlights this menu with the annotation: "Click to activate DC Mode".
- Profile Slider**: A horizontal slider with five positions: Standard, Silent, Turbo, Full Speed, and Manual. A red box highlights the Standard, Silent, Turbo, and Full Speed positions with the annotation: "Select a profile to apply to your fans".
- Buttons**: Three buttons at the bottom: Undo, Apply, and Exit (ESC).
 - "Undo" is annotated with: "Click to undo the changes".
 - "Apply" is annotated with: "Click to apply the fan setting".
 - "Exit (ESC)" is annotated with: "Click to go back to main menu".
- Manual Configuration**: A red box highlights the Manual position on the slider with the annotation: "Select to manually configure your fans".

Configuring fans manually

Select **Manual** from the list of profiles to manually configure your fans' operating speed.



Speed points

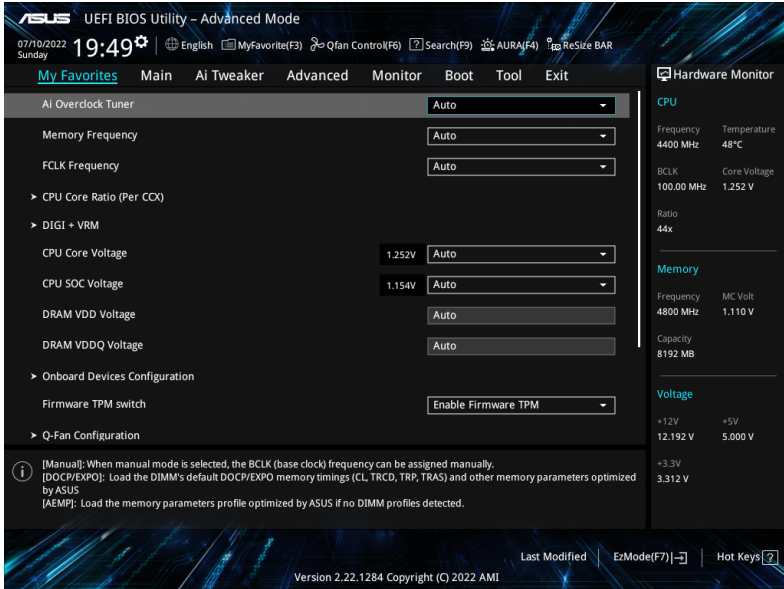
Select to manually configure your fans

To configure your fans:

1. Select the fan that you want to configure and to view its current status.
2. Click and drag the speed points to adjust the fans' operating speed.
3. Click **Apply** to save the changes then click **Exit (ESC)**.

3. My Favorites

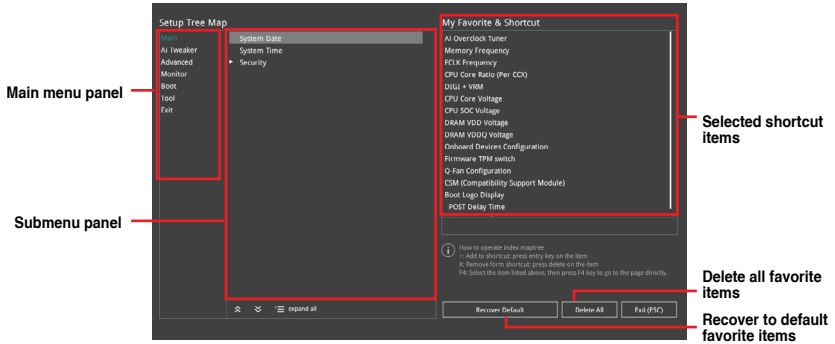
My Favorites is your personal space where you can easily save and access your favorite BIOS items. You can personalize this screen by adding or removing items.



Adding items to My Favorites

To add BIOS items:

1. Press <F3> on your keyboard or click **MyFavorite** from the BIOS screen to open Setup Tree Map screen.
2. On the Setup Tree Map screen, select the BIOS items that you want to save in My Favorites screen.



3. Select an item from main menu panel, then click the submenu that you want to save as favorite from the submenu panel and click **+** or press <Enter> on your keyboard.



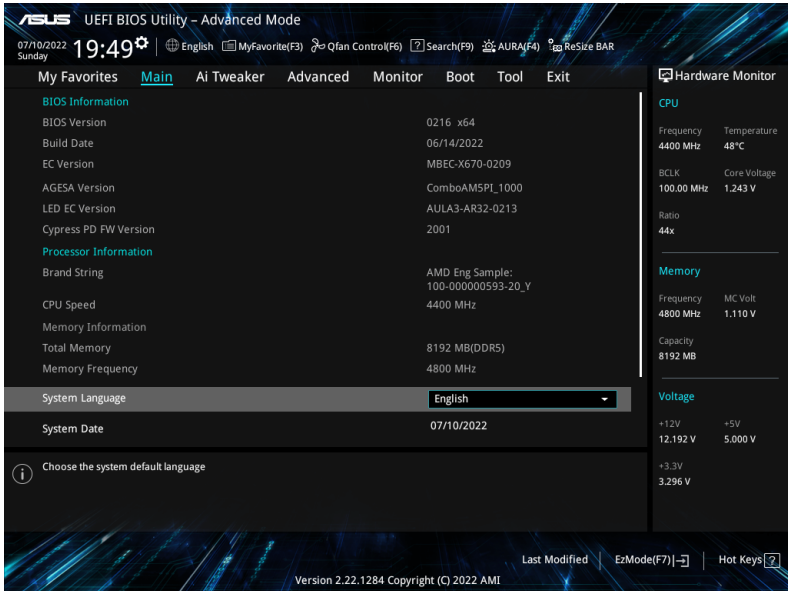
You cannot add the following items to My Favorite items:

- Items with submenu options.
- User-managed items such as language and boot order.
- Configuration items such as Memory SPD Information, system time and date.

4. Click **Exit (ESC)** or press <Esc> key to close Setup Tree Map screen.
5. Go to My Favorites menu to view the saved BIOS items.

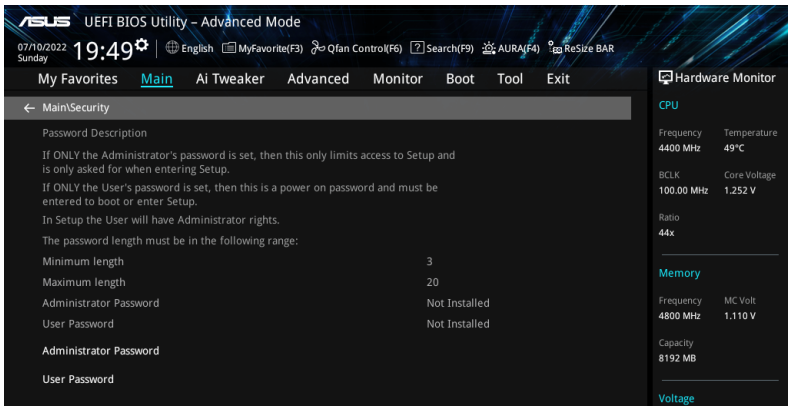
4. Main menu

The Main menu screen appears when you enter the Advanced Mode of the BIOS Setup program. The Main menu provides you an overview of the basic system information, and allows you to set the system date, time, language, and security settings.



Security

The Security menu items allow you to change the system security settings.





-
- If you have forgotten your BIOS password, erase the CMOS Real Time Clock (RTC) RAM to clear the BIOS password. See the motherboard for information on how to erase the RTC RAM via the Clear CMOS header or button.
 - The Administrator or User Password items on top of the screen show the default **[Not Installed]**. After you set a password, these items show **[Installed]**.
-

Administrator Password

If you have set an administrator password, we recommend that you enter the administrator password for accessing the system. Otherwise, you might be able to see or change only selected fields in the BIOS setup program.

To set an administrator password:

1. Select the **Administrator Password** item and press <Enter>.
2. From the **Create New Password** box, key in a password, then press <Enter>.
3. Re-type to confirm the password then select **OK**.

To change an administrator password:

1. Select the **Administrator Password** item and press <Enter>.
2. From the **Enter Current Password** box, key in the current password, then press <Enter>.
3. From the **Create New Password** box, key in a new password, then press <Enter>.
4. Re-type to confirm the password then select **OK**.

To clear the administrator password, follow the same steps as in changing an administrator password, but leave other fields blank then select **OK** to continue. After you clear the password, the **Administrator Password** item on top of the screen shows **[Not Installed]**.

User Password

If you have set a user password, you must enter the user password for accessing the system. The User Password item on top of the screen shows the default **[Not Installed]**. After you set a password, this item shows **[Installed]**.

To set a user password:

1. Select the **User Password** item and press <Enter>.
2. From the **Create New Password** box, key in a password, then press <Enter>.
3. Re-type to confirm the password then select **OK**.

To change a user password:

1. Select the **User Password** item and press <Enter>.
2. From the **Enter Current Password** box, key in the current password, then press <Enter>.
3. From the **Create New Password** box, key in a new password, then press <Enter>.
4. Re-type to confirm the password then select **OK**.

To clear the user password, follow the same steps as in changing a user password, but leave other fields blank then select **OK** to continue. After you clear the password, the **User Password** item on top of the screen shows **[Not Installed]**.

5. Ai Tweaker menu

The Ai Tweaker menu items allow you to configure overclocking-related items.



Be cautious when changing the settings of the Ai Tweaker menu items. Incorrect field values can cause the system to malfunction.



The configuration options for this section vary depending on the CPU and DIMM model you installed on the motherboard.

Scroll down to display other BIOS items.

ASUS UEFI BIOS Utility - Advanced Mode
07/10/2022 19:50 Sunday English MyFavorite(F3) Qfan Control(F6) Search(F9) AURA(F4) ReSize BAR

My Favorites Main **Ai Tweaker** Advanced Monitor Boot Tool Exit

Target CPU Speed : 4400MHz
Target DRAM Frequency : 4800MHz

Ai Overclock Tuner **Auto**

Memory Frequency **Auto**

FCLK Frequency **Auto**

Core Performance Boost **Auto**

CPU Core Ratio **Auto**

> CPU Core Ratio (Per CCK)

> DRAM Timing Control

> Precision Boost Overdrive

> DIGI + VRM

Performance Bias **Auto**

[Manual]: When manual mode is selected, the BCLK (base clock) frequency can be assigned manually.
[DOCP/EXPO]: Load the DIMM's default DOCP/EXPO memory timings (CL, TRCD, TRP, TRAS) and other memory parameters optimized by ASUS
[AEMP]: Load the memory parameters profile optimized by ASUS if no DIMM profiles detected.

Hardware Monitor

CPU

Frequency	Temperature
4400 MHz	47°C

BCLK **Core Voltage**

100.00 MHz	1.252 V
------------	---------

Ratio

44x

Memory

Frequency	MC Volt
4800 MHz	1.110 V

Capacity

8192 MB

Voltage

+12V	+5V
12.192 V	4.960 V
+3.3V	
3.296 V	

Last Modified EzMode(F7) Hot Keys

Version 2.22.1284 Copyright (C) 2022 AMI

Ai Overclock Tuner

- [Auto] Loads the optimal settings for the system.
- [Manual] When the manual mode is selected, the BCLK (base clock) frequency can be assigned manually.
- [EXPO I] Load the DIMM's default EXPO memory timings (CL, TRCD, TRP, TRAS) and other memory parameters optimized by ASUS.
- [EXPO II] Load the DIMM's complete default EXPO profile. Load the memory parameters profile optimized by ASUS if no DIMM profiles detected.
- [DOCP I] Load the DIMM's default DOCP memory timings (CL, TRCD, TRP, TRAS) and other memory parameters optimized by ASUS.
- [DOCP II] Load the DIMM's complete default DOCP profile. Load the memory parameters profile optimized by ASUS if no DIMM profiles detected.
- [AEMP] Loads the memory parameters profile which is optimized by ASUS if no DIMM profiles are detected.



The configuration options for this item depends on the DIMM installed.



The following item appears only when **Ai Overclock Tuner** is set to **[Manual]**, **[AEMP]** or **[EXPO I]**, **[EXPO II]**, or **[AEMP]**.

BCLK Frequency

Allows you to set the BCLK (base clock) frequency to enhance the system performance. Use the <+> or <-> to adjust the value.



We recommend you to set the value based on the CPU specification, as high BCLK frequencies may damage the CPU permanently.



The following item appears only when **Ai Overclock Tuner** is set to **[AEMP]**.

AEMP

Allows you to select your ASUS Enhanced Memory Profile (AEMP). Each profile has its own DRAM frequency, timing and voltage.



The following item appears only when **Ai Overclock Tuner** is set to **[EXPO I]** or **[EXPO II]**.

EXPO

Allows you to select your EXPO wProfile. Each profile has its own DRAM frequency, timing and voltage.



The following item appears only when **Ai Overclock Tuner** is set to **[D.O.C.P.]**.

D.O.C.P.

Allows you to select your D.O.C.P. Profile. Each profile has its own DRAM frequency, timing and voltage.

DRAM Frequency

Forces a DDR5 frequency slower than the common tCK detected via SPD.

Configuration options: [Auto] [DDR5-2000MHz] - [DDR5-20000MHz]

FCLK Frequency

Allows you to specify the FCLK frequency.

Configuration options: [Auto] [800MHz] - [3000MHz]

Core Performance Boost

Automatically overlocks the CPU and DRAM to enhance system performance.

Configuration options: [Auto] [Enabled] [Disabled]

CPU Core Ratio

Allows you to set the CPU core ratio.

Configuration options: [Auto] [12.00] - [100.00]

CPU Core Ratio (Per CCX)

The sub-items in this menu allow you to adjust Core Ratios for each CCX.

Core VID

Allows you to specify a custom CPU core VID. Power saving features for idle cores (e.g. cc6 sleep) remain active.

Configuration options: [Auto] [0.700] - [1.700]

CCD0

CCX0 Ratio

Allows you to specify a custom Core Ratio for this CCX.

Configuration options: [Auto] [12.00] - [100.00]

Dynamic OC Switcher

Enabling this dynamically switches back and forth between OC mode and Default modes based on current and temperature threshold specified.

Configuration options: [Auto] [Disabled] [Enabled]



The following items appear only when **Dynamic OC Switcher** is set to **[Enabled]**.

Current Threshold to Switch to OC Mode

Set this threshold to control when the CPU goes into OC Mode and when it comes back to default. Bigger than this value = OC Mode, smaller than this value = Default Mode. We recommend a value of 40A for single CCD and 60A for two CCDs.

Configuration options: [Auto] [0] - [255]

Calibrated Temperature Threshold to switch back

Set this threshold to control when the CPU returns to default mode. When CPU Calibrated Temperature is bigger than this threshold, CPU returns to default. Likewise, when temperature is smaller than this threshold AND current is bigger than Current Threshold, CPU slips into OC Mode. In Celsius Unit.

Configuration options: [Auto] [0] - [140]

Hysteresis

Higher numbers increase the time required to persist in state when crossing thresholds before switching. Set to 0 for fastest reaction and increase this to require longer times to remain said state before activation.

Configuration options: [Auto] [0] - [255]

DRAM Timing Control

The sub-items in this menu allow you to set the DRAM timing control features. Use the <+> and <-> keys to adjust the value. To restore the default setting, type **[Auto]** using the keyboard and press the <Enter> key. You can also select various Memory Presets to load settings suitably tuned for some memory modules.



Changing the values in this menu may cause the system to become unstable! If this happens, revert to the default settings.

Primary Timings

DRAM CAS# Latency

Configuration options: [Auto] [2] - [64]

DRAM RAS# to CAS# Delay

Configuration options: [Auto] [1] - [63]

DRAM RAS# PRE Time

Configuration options: [Auto] [1] - [63]

DRAM RAS# ACT Time

Configuration options: [Auto] [1] - [127]

Secondary Timings

DRAM Row Cycle Time

Configuration options: [Auto] [1] - [255]

DRAM WRITE to READ Delay

Configuration options: [Auto] [2] - [126]

DRAM REF Cycle Time

Configuration options: [Auto] [1] - [4095]

Trfc2

Configuration options: [Auto] [1] - [4095]

Trfcsb

Configuration options: [Auto] [1] - [2047]

DRAM READ to PRE Time

Configuration options: [Auto] [1] - [31]

DRAM RAS# to RAS# Delay L

Configuration options: [Auto] [1] - [31]

DRAM RAS# to RAS# Delay S

Configuration options: [Auto] [1] - [31]

Tfaw

Configuration options: [Auto] [1] - [127]

DRAM WRITE to READ Delay L

Configuration options: [Auto] [1] - [127]

DRAM WRITE to READ Delay S

Configuration options: [Auto] [1] - [31]

TrdrdScl

Configuration options: [Auto] [1] - [15]

TrdrdSc

Configuration options: [Auto] [1] - [15]

TrdrdSd

Configuration options: [Auto] [1] - [15]

Trdrddd

Configuration options: [Auto] [1] - [15]

TwrrwScl

Configuration options: [Auto] [1] - [63]

TwrrwSc

Configuration options: [Auto] [1] - [15]

TwrrwSd

Configuration options: [Auto] [1] - [15]

TwrrwDd

Configuration options: [Auto] [1] - [15]

Twrrd

Configuration options: [Auto] [1] - [15]

Trdwr

Configuration options: [Auto] [1] - [63]

DRAM Signal Control**Proc CA Drive Strength**

Configuration options: [Auto] [120 ohm] [60 ohm] [40 ohm] [30 ohm]

Rtt Nom Wr

Configuration options: [Auto] [RTT_OFF] [RZQ (240)] [RZQ/2 (120)] [RZQ/3 (80)] [RZQ/4 (60)] [RZQ/5 (48)] [RZQ/6 (40)] [RZQ/7 (34)]

Rtt Nom Rd

Configuration options: [Auto] [RTT_OFF] [RZQ (240)] [RZQ/2 (120)] [RZQ/3 (80)] [RZQ/4 (60)] [RZQ/5 (48)] [RZQ/6 (40)] [RZQ/7 (34)]

Rtt Wr

Configuration options: [Auto] [RTT_OFF] [RZQ (240)] [RZQ/2 (120)] [RZQ/3 (80)] [RZQ/4 (60)] [RZQ/5 (48)] [RZQ/6 (40)] [RZQ/7 (34)]

Rtt Park

Configuration options: [Auto] [RTT_OFF] [RZQ (240)] [RZQ/2 (120)] [RZQ/3 (80)] [RZQ/4 (60)] [RZQ/6 (40)] [RZQ/7 (34)]

Rtt Park Dqs

Configuration options: [Auto] [RTT_OFF] [RZQ (240)] [RZQ/2 (120)] [RZQ/3 (80)] [RZQ/4 (60)] [RZQ/5 (48)] [RZQ/6 (40)] [RZQ/7 (34)]

ProcODT

Configuration options: [Auto] [High Impedance] [480 ohm] [240 ohm] [160 ohm] [120 ohm] [96 ohm] [80 ohm] [68 ohm] [60 ohm] [53 ohm] [48 ohm] [43 ohm] [40 ohm] [36 ohm] [34 ohm] [32 ohm] [30 ohm] [28 ohm] [26 ohm] [25 ohm]

Proc Data Drive Strength

Configuration options: [Auto] [High Impedance] [480 ohm] [25.3 ohm]

DRAM Data Drive Strength

Configuration options: [Auto] [48 ohm] [40 ohm] [34 ohm]

Power Down Enable

Configuration options: [Auto] [Enabled] [Disabled]

Precision Boost Overdrive

Precision Boost Overdrive

When this item is enabled, it allows the processor to run beyond defined values for PPT, VDD_CPU EDC, VDD_CPU TDC, VDD_SOC EDC, VDD_SOC TDC to the limits of the board, and allows it to boost at higher voltages for longer durations than default operation.

Configuration options: [Auto] [Disabled] [Enabled] [Manual]



The following items appear only when **Precision Boost Overdrive** is set to **[Manual]**.

PPT Limit

PPT Limit [W], Board Socket Power capability, adjustable up to motherboard's programmed PPT limit.

Configuration options: [Auto] [0] - [65535]

TDC Limit

TDC Limit [A], Board thermally constrained current delivery capacity, adjustable up to motherboard's programmed board TDC limit.

Configuration options: [Auto] [0] - [65535]

EDC Limit

EDC Limit [A], Board electrically constrained current delivery capacity, adjustable up to motherboard's programmed board EDC limit.

Configuration options: [Auto] [0] - [65535]

SOC TDC Limit

SOC TDC Limit [A], Board electrically constrained current delivery capacity, adjustable up to motherboard's programmed board SOC TDC limit.

Configuration options: [Auto] [0] - [65535]

SOC EDC Limit

SOC EDC Limit [A], Board electrically constrained current delivery capacity, adjustable up to motherboard's programmed board SOC EDC limit.

Configuration options: [Auto] [0] - [65535]

Precision Boost Overdrive Scalar

[Auto] Part runs with a scalar of 1X, i.e. normal operation.

[Manual] Part runs with a scalar of customized value.



The following item appears only when **Precision Boost Overdrive Scalar** is set to **[Manual]**.

Customized Precision Boost Overdrive Scalar

Precision Boost Overdrive increases the maximum boost voltage used (runs above parts specified maximum) and the amount of time spent at that voltage. The larger the value entered the larger the boost voltage used and the longer that voltage will be maintained.

Configuration options: [1X] - [10X]

CPU Boost Clock Override

Allows you to increase (positive) or decrease (negative) the maximum CPU frequency that may be automatically achieved by the CPU Boost Algorithm.

Configuration options: [Disabled] [Enabled (Positive)] [Enabled (Negative)]



The following item appears only when **CPU Boost Clock Override** is set to **[Enabled (Positive)]**.

Max CPU Boost Clock Override(+)

Increases the maximum CPU frequency that may be automatically achieved by the Precision Boost 2 algorithm.

Configuration options: [Auto] [0] - [200]



The following item appears only when **CPU Boost Clock Override** is set to **[Enabled (Negative)]**.

Max CPU Boost Clock Override(+)

Decreases the maximum CPU frequency that may be automatically achieved by the Precision Boost 2 algorithm.

Configuration options: [Auto] [0] - [200]

Platform Thermal Throttle Limit

Allows you to decrease the maximum allowed processor temperature (celsius).

Configuration options: [Auto] [Manual]



The following item appears only when **Platform Thermal Throttle Limit** is set to **[Manual]**.

Platform Thermal Throttle Limit

Configuration options: [0] - [256]

Curve Optimizer

Curve Optimizer

Allows the user to shift the Voltage / Frequency (AVFS) curve to include higher voltages (positive values) or lower voltages (negative values). The larger the value entered the larger the magnitude of the voltage limit.

Configuration options: [Auto] [All Cores] [Per Core]



The following items appear only when **Curve Optimizer** is set to **[All Cores]**.

All Core Curve Optimizer Sign

Determines the direction of the curve shift on all cores. Positive shifts the curve up to use higher voltages. Negative shifts the curve down to use lower voltages.

Configuration options: [Positive] [Negative]

All Core Curve Optimizer Magnitude

Determines the magnitude of the curve shift to be made (entered in whole numbers) the larger the value entered the larger the magnitude of the shift.

Configuration options: [0] - [30]



The following items appear only when **Curve Optimizer** is set to **[Per Core]**.

Core 0-5 Curve Optimizer Sign

Determines the direction of the curve shift on this core. Positive shifts the curve up to use higher voltages. Negative shifts the curve down to use lower voltages.

Configuration options: [Positive] [Negative]

Core 0-5 Curve Optimizer Magnitude

Determines the magnitude of the curve shift to be made to this core (entered in whole numbers) the larger the value entered the larger the magnitude of the shift.

Configuration options: [0] - [30]

GFX Curve Optimizer

GFX Curve Optimizer

Allows the user to shift the GFX Voltage / Frequency (AVFS) curve to include higher voltages (positive values) or lower voltages (negative values). The larger the value entered the larger the magnitude of the voltage shift.

Configuration options: [Auto] [GFX Curve Optimizer]



The following items appear only when **GFX Curve Optimizer** is set to **[GFX Curve Optimizer]**.

GFX Curve Optimizer Sign

Determines the direction of the curve shift for GFX. Positive shifts the curve up to use higher voltages. Negative shifts the curve down to use lower voltages.

Configuration options: [Positive] [Negative]

GFX Curve Optimizer Magnitude

Determines the magnitude of the GFX curve shift to be made (entered in whole numbers) the larger the value entered the larger the magnitude of the shift. Field defaults to 0 and the user can enter whole integer numbers. Value entered, combined with the sign above, is used to send the SMU and GFX Curve Optimizer.

Configuration options: [0] - [30]

Digi+ VRM

VRM Initialization Check

When any error occurs during VRM initialization, the system will hang at POST code 76/77 if this function is enabled.

Configuration options: [Disabled] [Enabled]

CPU Load-line Calibration

CPU Load-Line Calibration is defined by AMD VRM spec and affects CPU voltage. The CPU working voltage will decrease proportionally to CPU loading. Higher value could get higher voltage and good overclocking performance but increase the CPU and VRM thermal.

Configuration options [Auto] [Level 1] [Level 2] [Level 3] [Level 4] [Level 5:Recommended for OC] [Level 6] [Level 7] [Level 8]



DO NOT remove the thermal module. The thermal conditions should be monitored.

CPU Current Capability

A higher value brings a wider total power range and extends the overclocking frequency range simultaneously.

Configuration options: [Auto] [100%] - [140%]



Configure higher values when overclocking or under a high loading for extra power support.

CPU VRM Switching Frequency

Sets the VRM switching frequency. VRM switching frequency affects transient response and VRM component temperatures. Setting a higher switching frequency will result in better transient response at the expense of higher VRM temperatures. Active cooling of the VRM heatsink is recommended when running high CPU voltage and high load-line calibration values.

Configuration options: [Auto] [Manual]



DO NOT remove the thermal module. The thermal conditions should be monitored.



The following item appears only when **CPU VRM Switching Frequency** is set to **[Manual]**.

Fixed CPU VRM Switching Frequency(KHz)

Allows you to set a higher frequency for a quicker transient response speed. The values range from 300 KHz to 800 KHz with an interval of 50 KHz.

CPU Power Duty Control

CPU power duty control adjusts the duty cycle of each VRM phase based upon current and/or temperature.

[T. Probe] Sets the buck controller to balance VRM FET temperatures
[Extreme] Select to set the VRM current balance mode.



DO NOT remove the thermal module when setting this item to **[Extreme]**. The thermal conditions should be monitored.

CPU Power Phase Control

Allows you to set the power phase control of the CPU.

- [Auto] Automatically selects the power phase control.
- [Standard] The number of active phases is controlled by the CPU.
- [Optimized] Set to the ASUS optimized phase tuning profile.
- [Extreme] Sets full phase mode.
- [Manual] Manually select the power phase response speed.



DO NOT remove the thermal module when setting this item to **[Extreme]**. The thermal conditions should be monitored.



The following item appears only when **CPU Power Phase Control** is set to **[Manual]**.

Power Phase Response

Select ultra fast mode for a faster power phase response. The reaction time will be longer when regular mode is selected.

Configuration options: [Ultra Fast] [Fast] [Medium] [Regular]

VDDSOC Load-Line Calibration

Configuration options: [Auto] [Level 1] [Level 2] [Level 3] [Level 4] [Level 5] [Level 6] [Level 7] [Level 8]

VDDSOC Current Capability

Configuration options: [Auto] [100%] - [140%]

VDDSOC Switching Frequency

Configuration options: [Auto] [Manual]



The following item appears only when **VDDSOC Switching Frequency** is set to **[Manual]**.

Fixed VDDSOC VRM Switching Frequency(KHz)

Allows you to set a higher frequency for a quicker transient response speed. The values range from 300 KHz to 800 KHz with an interval of 50 KHz.

VDDSOC Power Duty Control

VDDSOC power duty control adjusts the duty cycle of each VRM phase based upon current and/or temperature.

- [T. Probe] Sets the buck controller to balance VRM FET temperatures
- [Extreme] Select to set the VRM current balance mode.



DO NOT remove the thermal module when setting this item to **[Extreme]**. The thermal conditions should be monitored.

VDDSOC Power Phase Control

Configuration options: [Auto] [Standard] [Optimized] [Extreme] [Manual]



DO NOT remove the thermal module when setting this item to **[Extreme]**. The thermal conditions should be monitored.



The following item appears only when **VDDSOC Power Phase Control** is set to **[Manual]**.

Power Phase Response

Select ultra fast mode for a faster power phase response. The reaction time will be longer when regular mode is selected.

Configuration options: [Ultra Fast] [Fast] [Medium] [Regular]

Performance Bias

Different Values may help different Software's performance.

Configuration options: [Auto] [None] [CB R23] [GB3]

Tweaker's Paradise

Clock Spread Spectrum

Allows you to enable or disable Clock Spread Spectrum.

Configuration options: [Auto] [Enabled] [Disabled]

1.8V PLL Voltage

Allows you to set the 1.8V PLL Voltage. Use the <+> or <-> to adjust the value. The values range from 1.500V to 2.500V with an interval of 0.010V.

Configuration options: [Auto] [1.50000] - [2.50000]

1.8V Standby Voltage

Allows you to set the 1.8V Standby Voltage. Use the <+> or <-> to adjust the value. The values range from 1.500V to 2.500V with an interval of 0.010V.

Configuration options: [Auto] [1.50000] - [2.50000]

Misc_ALW

Allows you to set the Misc_ALW Voltage. Use the <+> or <-> to adjust the value. The values range from 0.600V to 1.500V with an interval of 0.010V.

Configuration options: [Auto] [0.60000] - [1.50000]

Chipset0 VDD Voltage

Allows you to set the Chipset0 VDD Voltage. Use the <+> or <-> to adjust the value. The values range from 0.800V to 1.400V with an interval of 0.005V.

Configuration options: [Auto] [0.80000] - [1.40000]

Chipset1 VDD Voltage

Allows you to set the Chipset1 VDD Voltage. Use the <+> or <-> to adjust the value. The values range from 0.800V to 1.400V with an interval of 0.005V.

Configuration options: [Auto] [0.80000] - [1.40000]

CPU 3.3V

Allows you to set the CPU 3.3V Voltage. Use the <+> or <-> to adjust the value. The values range from 2.800V to 4.000V with an interval of 0.020V.

Configuration options: [Auto] [2.80000] - [4.00000]

Sense MI Skew 4

Configuration options: [Auto] [Disabled] [Enabled]

Sense MI Skew 4

Use the <+> or <-> to adjust the value. The values range from 0.000 to 2.800 with an interval of 0.00625V

Configuration options: [Auto] [0.0000] - [2.80000]

Custom Algorithms

Customize your own algorithms to adjust boosting behavior for more optimized power efficiency, temperatures, and performance. Customize up to 3 concurrent algorithms.

Algorithm 1-3

Set to **[Enabled]** to customize this algorithm.

Configuration options: [Auto] [Enabled] [Disabled]



The following items appear only when **Algorithm 1** is set to **[Enabled]**.

Algorithm 1-3 Condition

Select the condition to monitor for and take action upon. When multiple Algorithms watch for the same condition then the result is 'AND' and the smaller of the 2 Action Values get written.

Configuration options: [Auto] [CPU Temperature] [Core Voltage] [Core Current]

Algorithm 1-3 Action

Select the action to take when targeted condition crosses the threshold. When multiple Algorithms execute the same Actions, then the result is 'AND' and the smaller of the 2 Action Values get written.

Configuration options: [Auto] [Package Power Limit Fast] [Package Power Limit Slow] [Thermal Limit] [Vcore TDC Limit] [Vcore EDC Limit] [SOC TDC Limit] [SOC EDC Limit]

Level 1 Threshold Value

Set the boundary separating the Level1 Action Value and Level2 Action Value. When condition is below or equal to this value, then Level1 Action Value gets written. If above but below Level2 Threshold Value, then Level2 Action Value gets written.

Temperature is in degrees Celsius, Voltage is in millivolts, and current is in Ampere. Configuration options: [Auto] [0] - [65000]

Level 2 Threshold Value

Set the boundary separating the Level2 Action Value and Level3 Action Value. When condition is below or equal to this value and above Level1 Threshold Value, then Level2 Action Value gets written. If above, then Level3 Action Value gets written.

Temperature is in degrees Celsius, Voltage is in millivolts, and current is in Ampere. Configuration options: [Auto] [0] - [65000]

Level 1 Action Value

Set the value for Action to take when condition lies below the first boundary. Power in in Watt, Temperature in degrees Celsius, Current is in Ampere, and BCLK is in MHz.

Configuration options: [Auto] [0] - [65000]

Level 2 Action Value

Set the value for Action to take when condition lies between the first boundary and second boundary. Power in in Watt, Temperature in degrees Celsius, Current is in Ampere, and BCLK is in MHz.

Configuration options: [Auto] [0] - [65000]

Level 3 Action Value

Set the value for Action to take when condition lies above the second boundary. Power in in Watt, Temperature in degrees Celsius, Current is in Ampere, and BCLK is in MHz.

Configuration options: [Auto] [0] - [65000]

CPU Core Voltage

Allows you to increase to help CPU Core Frequency overclock.

Configuration options: [Auto] [Manual Mode] [Offset Mode]



The following item appears only when **CPU Core Voltage** is set to **[Manual Mode]**.

CPU Core Voltage Override

Allows you to configure the input voltage for the CPU by the external voltage regulator. Use the <+> and <-> keys to adjust the value. The values range from 0.625V to 1.700V with an interval of 0.005V.

Configuration options: [Auto] [0.62500] - [1.70000]



The following items appear only when **CPU Core Voltage** is set to **[Offset Mode]**.

Offset Mode Sign

[+] To offset the CPU core voltage by a positive value.

[-] To offset the CPU core voltage by a negative value.

CPU Core Voltage Offset

Allows you to configure the input voltage for the CPU by the external voltage regulator. Use the <+> or <-> to adjust the value. The values range from 0.005V to 0.500V with an interval of 0.005V.

Configuration options: [Auto] [0.00500] - [0.50000]

CPU SOC Voltage

Allows you to increase to help Memory Frequency overclock.

Configuration options: [Auto] [Manual Mode] [Offset Mode]



The following item appears only when **CPU SOC Voltage** is set to **[Manual Mode]**.

VDDSOC Voltage Override

Use the <+> and <-> keys to adjust the value. The values range from 0.625V to 1.700V with an interval of 0.005V.

Configuration options: [Auto] [0.62500] - [1.70000]



The following items appear only when **CPU SOC Voltage** is set to **[Offset Mode]**.

VDDSOC Offset Mode Sign

[+] To offset the CPU SOC voltage by a positive value.

[-] To offset the CPU SOC voltage by a negative value.

VDDSOC Voltage Offset

Use the <+> or <-> to adjust the value. The values range from 0.005V to 0.500V with an interval of 0.005V.

Configuration options: [Auto] [0.00500] - [0.50000]

CPU VDDIO / MC Voltage

Use the <+> or <-> to adjust the value. The values range from 0.800V to 2.000V with an interval of 0.010V.

Configuration options: [Auto] [0.80000] - [2.00000]

Misc Voltage

Configuration options: [Auto] [Offset Mode]



The following items appear only when **Misc Voltage** is set to **[Offset Mode]**.

Offset Mode Sign

- [+] To offset the Misc voltage by a positive value.
- [-] To offset the Misc voltage by a negative value.

Misc Voltage Offset

Use the <+> or <-> to adjust the value. The values range from 0.010V to 0.500V with an interval of 0.010V.

Configuration options: [Auto] [0.01000] - [0.50000]

VDDP Voltage

Use the <+> or <-> to adjust the value. The values range from 0.700V to 1.800V with an interval of 0.001V.

Configuration options: [Auto] [0.70000] - [1.80000]

High DRAM Voltage Mode

If disabled, the upper range for DRAM Voltage will be 1.435V. If enabled, the upper range will be 2.070V. If enabled on non-supported DRAM, the voltage will be lower than requested. Configuration options: [Auto] [Disabled] [Enabled]

DRAM VDD Voltage

Allows you to set the power for the DRAM IC's VDD portion. Use the <+> or <-> to adjust the value. The values range from 0.800V to 1.435V with an interval of 0.005V.

Configuration options: [Auto] [0.80000] - [1.43500]

DRAM VDDQ Voltage

Allows you to set the power for the DRAM IC's VDD Data portion. Use the <+> or <-> to adjust the value. The values range from 0.800V to 1.435V with an interval of 0.005V.

Configuration options: [Auto] [0.80000] - [1.43500]

Advanced Memory Voltages

PMIC Voltages

Configuration options: [Auto] [Sync All PMICs] [By per PMIC]



The following items appear only when **PMIC Voltages** is set to **[Sync All PMICs]**.

SPD HUB VLDO (1.8V)

Allows you to set the main power for the SPD Hub Logic. Default set to 1.8V. Use the <+> or <-> to adjust the value. The values range from 1.700V to 2.000V with an interval of 0.100V.

Configuration options: [Auto] [1.70000] - [2.00000]

SPD HUB VDDIO (1.0V)

Allows you to set the main power for the SPD Hub side-band interface. Default set to 1.0V. Use the <+> or <-> to adjust the value. The values range from 0.900V to 1.200V with an interval of 0.100V.

Configuration options: [Auto] [0.90000] - [1.20000]

Memory VDD Voltage

Allows you to set the power for the DRAM IC's VDD portion. Use the <+> or <-> to adjust the value. The values range from 0.800V to 1.435V with an interval of 0.005V.

Configuration options: [Auto] [0.80000] - [1.43500]

Memory VDDQ Voltage

Allows you to set the power for the DRAM IC's Data portion. Use the <+> or <-> to adjust the value. The values range from 0.800V to 1.435V with an interval of 0.005V.

Configuration options: [Auto] [0.80000] - [1.43500]

Memory VPP Voltage

Allows you to set the power for the DRAM Activating Power Supply. Use the <+> or <-> to adjust the value. The values range from 1.500V to 2.135V with an interval of 0.005V.

Configuration options: [Auto] [1.50000] - [2.13500]

Memory Voltage Switching Frequency

Allows you to set the switching frequency of memory voltage regulator in MHz. Use the <+> or <-> to adjust the value. The values range from 0.750MHz to 1.500MHz with an interval of 0.250MHz.

Configuration options: [Auto] [0.75000] - [1.50000]

Memory Current Capability

Allows you to set the current capability for the Switching Regulators in Amps. Use the <+> or <-> to adjust the value. The values range from 0.125A to 7.875A with an interval of 0.125A.

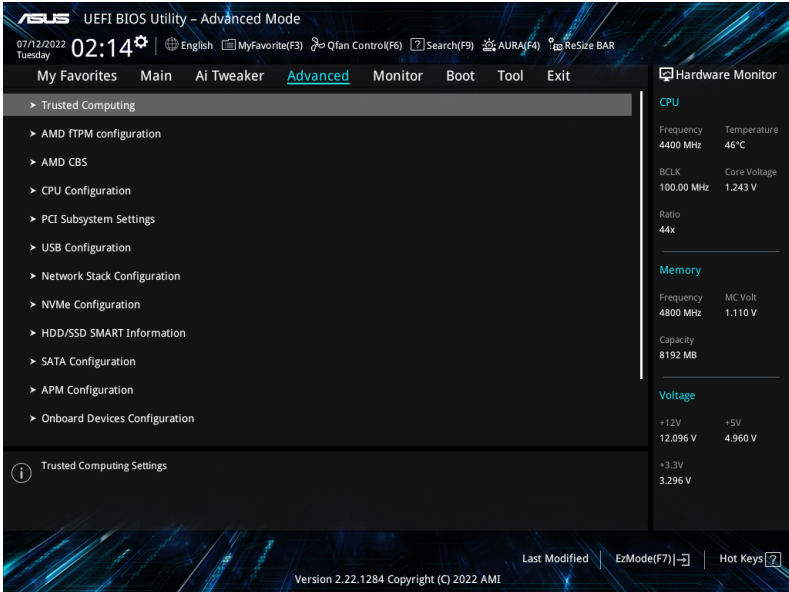
Configuration options: [Auto] [0.12500] - [7.87500]

6. Advanced menu

The Advanced menu items allow you to change the settings for the CPU and other system devices. Scroll down to display other BIOS items.

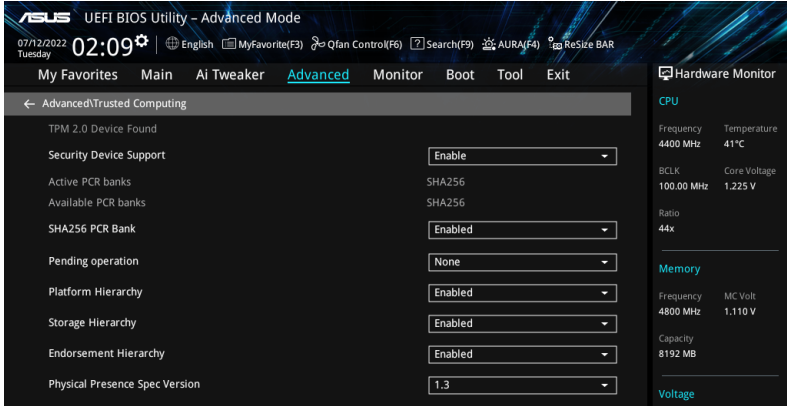


Be cautious when changing the settings of the Advanced menu items. Incorrect field values can cause the system to malfunction.



6.1 Trusted Computing

The items in this menu allow you to configure the Trusted Computing settings.



Security Device Support

Allows you to enable or disable the BIOS support for security device. O.S. will not show Security Device. TCG EFI protocol and INT1A interface will not be available.
Configuration options: [Disable] [Enable]



The following items appear only when **Security Device Support** is set to **[Enable]**.

SHA256 PCR Bank

Allows you to enable or disable the SHA256 PCR Bank.
Configuration options: [Disabled] [Enabled]

Pending operation

Allows you to schedule an Operation for the Security Device.
Configuration options: [None] [TPM Clear]



Your computer will reboot during restart in order to change the State of the Security Device.

Storage Hierarchy

Allows you to enable or disable the Storage Hierarchy.
Configuration options: [Disabled] [Enabled]

Endorsement Hierarchy

Allows you to enable or disable the Endorsement Hierarchy.
Configuration options: [Disabled] [Enabled]

Physical Presence Spec Version

Allows you to select to Tell O.S. to support PPI Version 1.2 or 1.3.

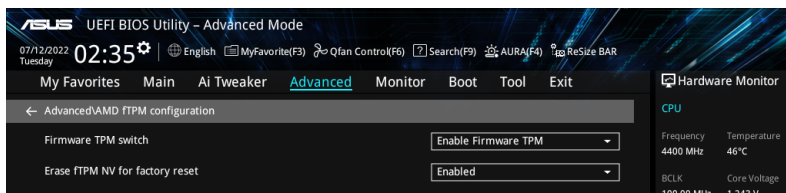
Configuration options: [1.2] [1.3]



Some HCK tests might not support 1.3.

6.2 AMD fTPM configuration

The items in this menu show the AMD fTPM configuration options.



Firmware TPM switch

Allows you to enable or disable Firmware TPM.

[Enable Firmware TPM] Enables platform Firmware TPM.

[Disable Firmware TPM] Disables platform Firmware TPM.



When [Disable Firmware TPM] is selected, fTPM will be disabled and all data saved on it will be lost.

Erase fTPM NV for factory reset

Allows you to enable or disable fTPM reset for newly installed CPUs.

[Disabled] Keep previous fTPM records and continue system boot, fTPM will not be enabled with the new CPU unless fTPM is reset (reinitialized). Swapping back to the old CPU may allow you to recover TPM related keys and data.

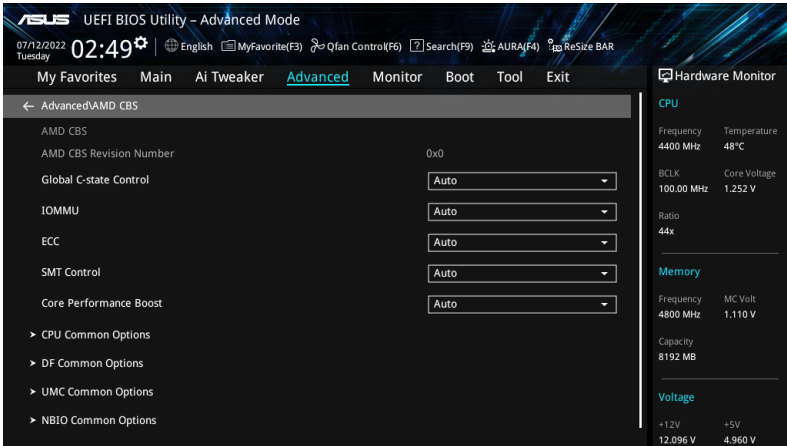
[Enabled] Reset fTPM, if you have Bitlocker or encryption-enabled system, the system will not boot without a recovery key.

6.3 AMD CBS

The items in this menu shows the AMD Common BIOS Specifications.



The configuration options for this section vary depending on the motherboard. Please refer to the BIOS of your motherboard for the actual settings and options.



Global C-state Control

Allows you to control IO based C-state generation and DF C-states.

Configuration options: [Disabled] [Enabled] [Auto]

IOMMU

Allows you to enable or disable IOMMU.

Configuration options: [Disabled] [Enabled] [Auto]

ECC

Allows you to enable or disable ECC. Setting this item to **[Auto]** will set ECC to enable.

Configuration options: [Disabled] [Enabled] [Auto]

SMT Control

Can be used to disable symmetric multithreading. To re-enable SMT, a POWER CYCLE is needed after setting this item to **[Auto]**.

Configuration options: [Disable] [Auto]

Core Performance Boost

Allows you to disable Core Performance Boost.

Configuration options: [Disabled] [Auto]

CPU Common Options

Thread Enablement

Performance

Prefetcher settings

L1 Stream HW Prefetcher

Allows you to enable or disable L1 Stream HW Prefetcher.
Configuration options: [Disable] [Enable] [Auto]

L2 Stream HW Prefetcher

Allows you to enable or disable L2 Stream HW Prefetcher.
Configuration options: [Disable] [Enable] [Auto]

L1 Stride Prefetcher

Uses memory access history of individual instructions to fetch additional lines when each access is a constant distance from the previous.
Configuration options: [Disable] [Enable] [Auto]

L1 Region Prefetcher

Uses memory access history to fetch additional lines when the data access for a given instruction tends to be followed by other data accesses.
Configuration options: [Disable] [Enable] [Auto]

L2 Up/Down Prefetcher

Uses memory access history to determine whether to fetch the next or previous line for all memory accesses.
Configuration options: [Disable] [Enable] [Auto]

Core Watchdog

Core Watchdog Timer Enable

Allows you to enable or disable CPU Watchdog Timer.
Configuration options: [Disabled] [Enabled] [Auto]



The following items appear only when **Core Watchdog Timer Enable** is set to **[Enabled]**.

Core Watchdog Timer Interval

Allows you to select CPU Watchdog Timer interval.
Configuration options: [Auto] [39.68us] [80.64us] [162.56us] [326.4us] [654.08us] [1.309ms] [2.620ms] [5.241ms] [10.484ms] [20.970ms] [40.64ms] [82.53ms] [166.37ms] [334.05ms] [669.41ms] [1.340s] [2.681s] [5.364s] [10.730s] [21.461s]

Core Watchdog Timer Severity

Allows you to specify the CPU Watchdog Time severity (MSRC001_0074[CpuWdTmrCfgSeverity]).
Configuration options: [No Error] [Transparent] [Corrected] [Deferred] [Uncorrected] [Fatal] [Auto]

Platform First Error Handling

Allows you to enable or disable PFEH, cloack individual banks, and mask deferred error interrupts from each bank.
Configuration options: [Enabled] [Disabled] [Auto]

Opcache Control

Allows you to enable or disable the Opcache.
Configuration options: [Disabled] [Enabled] [Auto]

Streaming Stores Control

Allows you to enable or disable the Streaming Stores functionality.
Configuration options: [Disabled] [Enabled] [Auto]

Local APIC MODe

Allows you to select local APIC operation modes.

Configuration options: [Compatibility] [xAPIC] [x2APIC] [Auto]

ACPI _CST C1 Declaration

Determines whether or not to declare the C1 state to the OS.

Configuration options: [Disabled] [Enabled] [Auto]

MCA error thresh enable

Allows you to enable MCA error thresholding.

Configuration options: [False] [True] [Auto]



The following item appears only when **MCA error thresh enable** is set to **[True]**.

MCA error thresh count

Effective error threshold count = 4095(0xFFFF) - <this value> (e.g. the default value of 0xFF5 results in a threshold of 10)

Configuration options: [1] - [4095]

SMU and PSP Debug Mode

When this item is set to **[Enabled]**, uncorrected errors detected by the PSP FW or SMU FW that should cause a cold reset, will hang and not restart the system.

Configuration options: [Disabled] [Enabled] [Auto]

PPIN Opt-in

Allows you to turn on PPIN feature.

Configuration options: [Disabled] [Enabled] [Auto]

Fast Short REP MOVSB

This item is set to 1 by default, but can be set to zero for analysis purposes as long as OS supports it.

Configuration options: [Disabled] [Enabled]

Enhanced REP MOVSB/STOSB

This item is set to 1 by default, but can be set to zero for analysis purposes as long as OS supports it.

Configuration options: [Disabled] [Enabled]

REP-MOV/STOS Streaming

Allow REP-MOV/STOS to use non-caching streaming store for large sizes.

Configuration options: [Disabled] [Enabled]

Power Supply Idle Control

Configuration options: [Low Current Idle] [Typical Current Idle] [Auto]

Xtrig7 Workaround

This workaround is only applicable for Rev A. For Rev A, by default (Auto), the Bronze workaround is applied. For Rev B, no workaround is applied and changing the selection for this option will not result in any changes.

[Auto] Bronze workaround is applied.

[No Workaround] No workaround is applied.

[Bronze Workaround] DbReq and PDM function as expected, breakpoint redirect capability compromised.

[Silver Workaround] DbReq, PDM, and breakpoint redirect function as expected, SCAN capability compromised.

SNP Memory (RMP Table) Coverage

When this item is set to **[Enabled]**, the ENTIE system memory is covered.

Configuration options: [Disabled] [Enabled] [Custom] [Auto]



The following item appears only when **SNP Memory (RMP Table) Coverage** is set to **[Custom]**.

Amount of Memory to Cover

Specify MB of System Memory to be covered in Hex.

Configuration options: [0] - [100000]

SMEE

Control secure memory encryption enable.

Configuration options: [Disable] [Enable] [Auto]

Action on BIST Failure

Allows you to set the action to take when a CCD BIST failure is detected.

Configuration options: [Do nothing] [Down-CCD] [Auto]

DF Common Options

Memory Addressing

Memory interleaving

Allows for disabling memory channel interleaving.

Configuration options: [Disabled] [Auto]

Memory interleaving size

Controls the memory interleaving size. The valid values are AUTO, 256 bytes, 512 bytes, 1 Kbytes, or 2 Kbytes. This determines the starting address of the interleave (bit 8, 9, 10 or 11).

Configuration options: [256 Bytes] [512 Bytes] [1KB] [2KB]

DRAM map inversion

Inverting the map will cause the highest memory channels to get assigned the lowest addresses in the system.

Configuration options: [Disable] [Enable] [Auto]

Location of private memory regions

Controls whether or not the private memory regions (PSP, SMU and CC6) are at the top of DRAM pair or distributed. Note that distributed requires memory on all dies. Note that it will always be at the top of DRAM if some dies don't have memory regardless of this option's setting.

Configuration options: [Distributed] [Consolidated] [Consolidated to 1st DRAM pair] [Auto]

ACPI

ACPI SRAT L3 Cache as NUMA Domain

[Disabled] Memory Addressing \ NUMA nodes per socket will be declared.

[Enabled] Each CCX in the system will be declared as a separate NUMA domain.

[Auto] Sets to the default option.

Disable DF to external downstream IP Sync Flood Propagation

Disables Error propagation to UMC or any downstream slaves eg. FCH. Use this to avoid reset in failure scenario.

Configuration options: [Sync flood disabled] [Sync flood enabled] [Auto]

Disable DF sync flood propagation

Disables propagation from PIE to other DF components and eventually to SDP ports.
Configuration options: [Sync flood disabled] [Sync flood enabled] [Auto]

Disable DF sync flood propagation

Disables propagation from PIE to other DF components and eventually to SDP ports.
Configuration options: [Sync flood disabled] [Sync flood enabled] [Auto]

Freeze DF module queues on error

This item allows you to enable or disable freezing of all DF queues on error and also forces a sync flood on HWA even if MCAs are disabled.
Configuration options: [Disabled] [Enabled] [Auto]

DF Cstates

When DF Cstate feature is set to **[Enabled]**, FW programs the registers required to enable this feature is the DF HW. (For **[Auto]** option, it means this option will synchronize with Global C State).

Configuration options: [Disabled] [Enabled] [Auto]

PSP error injection support

Configuration options: [False] [True]

UMC Common Options

DDR Options

DDR Timing Configuration

This item allows you to configure DRAM timing configuration.



Damage caused by use of your AMD processor outside of specification or in excess of factory settings are not covered by your system manufacturers warranty.



The following items appear only when **[Accept]** is selected for **DRAM Timing Configuration**.

Active Memory Timing Settings

Configuration options: [Auto] [Enabled]

Memory Target Speed

Specifies the memory target speed in MT/s. The valid input is 2000 MT/s, 2400 MT/s, and range of 3200 MT/s ~ 12000 MT/s (stepping of 200 MT/s). The value is in decimal. The user input value will be rounded down to align with the stepping of 200 MT/s. The maximum speed defined in the JEDEC spec is 8400 MT/s, any input value that is greater than 8400 MT/s will be limited to 8400 MT/s.

DDR SPD Timing

Tcl Ctrl

[Auto]	Follow default setting.
[Manual]	Manually specify.



The following item appears only when **Tcl Ctrl** is set to **[Manual]**.

Tcl

Specifies the CAS Latency. Valid values: 0x16 ~ 0x40, with a stepping of 2. The value is in hex.

Trcd Ctrl

[Auto] Follow default setting.
[Manual] Manually specify.



The following item appears only when **Trcd Ctrl** is set to **[Manual]**.

Trcd

Specifies the RAS# Active to CAS# Read Delay Time. Valid values: 0x8 ~ 0x3E with a stepping of 2. The value is in hex.

Trp Ctrl

[Auto] Follow default setting.
[Manual] Manually specify.



The following item appears only when **Trp Ctrl** is set to **[Manual]**.

Trp

Specifies Row Precharge Delay Time. Valid values: 0x8 ~ 0x3E with a stepping of 2. The value is in hex.

Tras Ctrl

[Auto] Follow default setting.
[Manual] Manually specify.



The following item appears only when **Tras Ctrl** is set to **[Manual]**.

Tras

Specifies Active to Precharge Delay Time. Valid values: 0x1E ~ 0x7E with a stepping of 2.

Trc Ctrl

[Auto] Follow default setting.
[Manual] Manually specify.



The following item appears only when **Trc Ctrl** is set to **[Manual]**.

Trc

Specifies Active to Active/Refresh Delay Time. Valid values: 0x20 ~ 0xFF. The value is in hex.

Twr Ctrl

[Auto] Follow default setting.
[Manual] Manually specify.



The following item appears only when **Twr Ctrl** is set to **[Manual]**.

Twr

Specifies the Minimum Write Recovery Time. Valid values: 0x30 ~ 0x60. The value is in hex.

Trfc1 Ctrl

[Auto] Follow default setting.
[Manual] Manually specify.



The following item appears only when **Trfc1 Ctrl** is set to **[Manual]**.

Trfc1

Specifies the Refresh Recovery Delay Time (tRFC1). Valid values: 0x32 ~ 0xFF. The value is in hex.

Trfc2 Ctrl

[Auto]	Follow default setting.
[Manual]	Manually specify.



The following item appears only when **Trfc2 Ctrl** is set to **[Manual]**.

Trfc2

Specifies the Refresh Recovery Delay Time (tRFC2). Valid values: 0x32 ~ 0xFF. The value is in hex.

TrfcSb Ctrl

[Auto]	Follow default setting.
[Manual]	Manually specify.



The following item appears only when **TrfcSb Ctrl** is set to **[Manual]**.

TrfcSb

Specifies the Refresh Recovery Delay Time (tRFCSB). Valid values: 0x32 ~ 0xFF. The value is in hex.

DDR Non-SPD Timing

Trtp Ctrl

[Auto]	Follow default setting.
[Manual]	Manually specify.



The following item appears only when **Trtp Ctrl** is set to **[Manual]**.

Trtp

Specifies the Read CAS# to Precharge command delay time. Valid values: 0x5 ~ 0x1F. The value is in hex.

TrrdL Ctrl

[Auto]	Follow default setting.
[Manual]	Manually specify.



The following item appears only when **TrrdL Ctrl** is set to **[Manual]**.

TrrdL

Specifies the Activate to Activate Delay Time, same bank group (tRRD_L). Valid values: 0x4 ~ 0x20. The value is in hex.

TrrdS Ctrl

[Auto]	Follow default setting.
[Manual]	Manually specify.



The following item appears only when **TrrdS Ctrl** is set to **[Manual]**.

TrrdS

Specifies the Activate to Activate Delay Time, different bank group (tRRD_S). Valid values: 0x4 ~ 0x14. The value is in hex.

Tfaw Ctrl

[Auto]	Follow default setting.
[Manual]	Manually specify.



The following item appears only when **Tfaw Ctrl** is set to **[Manual]**.

Tfaw

Specifies the Four Activate Window Time. Valid values: 0x14 ~ 0x50. The value is in hex.

TwtrL Ctrl

[Auto]	Follow default setting.
[Manual]	Manually specify.



The following item appears only when **TwtrL Ctrl** is set to **[Manual]**.

TwtrL

Specifies the Minimum Write to Read Time, the same bank group. Valid values: 0x8 ~ 0x30. The value is in hex.

TwtrS Ctrl

[Auto]	Follow default setting.
[Manual]	Manually specify.



The following item appears only when **TwtrS Ctrl** is set to **[Manual]**.

TwtrS

Specifies the Minimum Write to Read Time, different bank group. Valid values: 0x2 ~ 0x10. The value is in hex.

TrdrdScL Ctrl

[Auto]	Follow default setting.
[Manual]	Manually specify.



The following item appears only when **TrdrdScL Ctrl** is set to **[Manual]**.

TrdrdScL

Specifies the CAS to CAS delay time, same bank group. Valid values: 0x1 ~ 0xF. The value is in hex.

TrdrdSc Ctrl

[Auto]	Follow default setting.
[Manual]	Manually specify.



The following item appears only when **TrdrdSc Ctrl** is set to **[Manual]**.

TrdrdSc

Specifies the Read to Read turnaround timing in the same chipselect. Valid values: 0x1 ~ 0xF. The value is in hex.

TrdrdSd Ctrl

[Auto] Follow default setting.
[Manual] Manually specify.



The following item appears only when **TrdrdSd Ctrl** is set to **[Manual]**.

TrdrdSd

Specifies the Read to Read turnaround timing in the same DIMM.
Valid values: 0x1 ~ 0xF. The value is in hex.

TrdrdDd Ctrl

[Auto] Follow default setting.
[Manual] Manually specify.



The following item appears only when **TrdrdDd Ctrl** is set to **[Manual]**.

TrdrdDd

Specifies the Read to Read turnaround timing in a different DIMM.
Valid values: 0x1 ~ 0xF. The value is in hex.

TwrrwScL Ctrl

[Auto] Follow default setting.
[Manual] Manually specify.



The following item appears only when **TwrrwScL Ctrl** is set to **[Manual]**.

TwrrwScL

Specifies the CAS to CAS Delay Time, same bank group. Valid values: 0x1 ~ 0x3F. The value is in hex.

TwrrwSc Ctrl

[Auto] Follow default setting.
[Manual] Manually specify.



The following item appears only when **TwrrwSc Ctrl** is set to **[Manual]**.

TwrrwSc

Specifies the Write to Write turnaround timing in the same chipselect.
Valid values: 0x1 ~ 0xF. The value is in hex.

TwrrwSd Ctrl

[Auto] Follow default setting.
[Manual] Manually specify.



The following item appears only when **TwrrwSd Ctrl** is set to **[Manual]**.

TwrrwSd

Specifies the Write to Write turnaround timing in the same DIMM.
Valid values: 0x1 ~ 0xF. The value is in hex.

TwrrwDd Ctrl

[Auto] Follow default setting.
[Manual] Manually specify.



The following item appears only when **TwrrDd Ctrl** is set to **[Manual]**.

TwrrDd

Specifies the Write to Write turnaround timing in a different DIMM. Valid values: 0x1 ~ 0xF. The value is in hex.

Twrrd Ctrl

[Auto]	Follow default setting.
[Manual]	Manually specify.



The following item appears only when **Twrrd Ctrl** is set to **[Manual]**.

Twrrd

Specifies the Write to Read turnaround timing. Valid values: 0x1 ~ 0xF. The value is in hex.

Trdwr Ctrl

[Auto]	Follow default setting.
[Manual]	Manually specify.



The following item appears only when **Trdwr Ctrl** is set to **[Manual]**.

Trdwr

Specifies the Read to Write turnaround timing. Valid values: 0x1 ~ 0xF. The value is in hex.

DDR BUS Configuration

This item allows you to configure DDR BUS configuration.

Processor CK drive strengths

Specifies the Processor CK drive strengths. Configuration options: [Auto] [120.0 Ohm] [60.0 Ohm] [40.0 Ohm] [30.0 Ohm]

Processor CA drive strengths

Specifies the Processor CA drive strengths. Configuration options: [Auto] [120.0 Ohm] [60.0 Ohm] [40.0 Ohm] [30.0 Ohm]

Processor CS drive strengths

Specifies the Processor CS drive strengths. Configuration options: [Auto] [120.0 Ohm] [60.0 Ohm] [40.0 Ohm] [30.0 Ohm]

DRAM ODT impedance RTT_NOM_WR

Specifies the DRAM ODT impedance RTT_NOM_WR. Configuration options: [Auto] [RTT_OFF] [RZQ (240)] [RZQ/2 (120)] [RZQ/3 (80)] [RZQ/4 (60)] [RZQ/5 (48)] [RZQ/6 (40)] [RZQ/7 (34)]

DRAM ODT impedance RTT_NOM_RD

Specifies the DRAM ODT impedance RTT_NOM_RD. Configuration options: [Auto] [RTT_OFF] [RZQ (240)] [RZQ/2 (120)] [RZQ/3 (80)] [RZQ/4 (60)] [RZQ/5 (48)] [RZQ/6 (40)] [RZQ/7 (34)]

DRAM ODT impedance RTT_WR

Specifies the DRAM ODT impedance RTT_WR. Configuration options: [Auto] [RTT_OFF] [RZQ (240)] [RZQ/2 (120)] [RZQ/3 (80)] [RZQ/4 (60)] [RZQ/5 (48)] [RZQ/6 (40)] [RZQ/7 (34)]

DRAM ODT impedance RTT_PARK

Specifies the DRAM ODT impedance RTT_PARK. Configuration options: [Auto] [RTT_OFF] [RZQ (240)] [RZQ/2 (120)] [RZQ/3 (80)] [RZQ/4 (60)] [RZQ/5 (48)] [RZQ/6 (40)] [RZQ/7 (34)]

DRAM ODT impedance DQS_RTT_PARK

Specifies the DRAM ODT impedance DQS_RTT_PARK.

Configuration options: [Auto] [RTT_OFF] [RZQ (240)] [RZQ/2 (120)] [RZQ/3 (80)] [RZQ/4 (60)] [RZQ/5 (48)] [RZQ/6 (40)] [RZQ/7 (34)]

Processor ODT impedance

Specifies the Processor ODT impedance.

Configuration options: [Auto] [High Impedance] [480 ohm] [240 ohm] [160 ohm] [120 ohm] [96 ohm] [80 ohm] [68 ohm] [60 ohm]

Processor DQ drive strengths

Specifies the Processor DQ drive strengths.

Configuration options: [Auto] [High Impedance] [480 ohm] [25.3 ohm]

DRAM DQ drive strengths

Specifies the DRAM DQ drive strengths.

Configuration options: [Auto] [48 ohm] [40 ohm] [34 ohm]

DDR Controller Configuration

This item allows you to configure DDR controller configuration.

DDR Power Options

Power Down Enable

Allows you to enable or disable DDR power down mode.

Configuration options: [Disabled] [Enabled] [Auto]

DDR RAS

This item allows you to configure DDR RAS.

Disable Memory Error Injection

Configuration options: [False] [True] [Auto]

DDR ECC Configuration

DDR Security

This item allows you to configure DDR Security.

TSME

Configuration options: [Auto] [Enabled] [Disabled]

Data Scramble

Configuration options: [Enabled] [Disabled] [Auto]

DDR Addressing Options

This item allows you to configure DDR Addressing Options.

Chipselect Interleaving

Interleave memory blocks across the DRAM chip selects for node 0.

Configuration options: [Disabled] [Auto]

Address Hash Bank

Allows you to enable or disable bank address hashing.

Configuration options: [Disabled] [Enabled] [Auto]

Address Hash CS

Enable or disable CS address hashing.

Configuration options: [Auto] [Enabled] [Disabled]

BankSwapMode

Configuration options: [Auto] [Disabled] [Swap APU]

DDR Training Options

This item allows you to configure DDR Training Options.

DFE Read Training

Perform 2D Read Training with DFE on.

Configuration options: [Auto] [Enable] [Disable]

DRAM PDA Enumerate ID Programming Mode

Configuration options: [Auto] [Sequential PDA enumeration mode] [Legacy PDA enumeration mode]

DDR Memory MBIST

This item allows you to configure DDR Memory MBIST.

MBIST Enable

Allows you to enable or disable Memory MBIST.
Configuration options: [Disabled] [Enabled] [Auto]



The following items appear only when **MBIST Enable** is set to **[Enabled]**.

MBIST Test Mode

Allows you to select the MBIST Test Mode - Interface Mode (Tests Single and Multiple CS transactions and Basic Connectivity) or Data Eye Mode (Measures Voltage vs. Timing).

Configuration options: [Interface Mode] [Data Eye Mode] [Both] [Auto]

MBIST Aggressors

Allows you to enable or disable Memory Aggressor test.

Configuration options: [Disabled] [Enabled] [Auto]

MBIST Per Bit Slave Die Reporting

Reports 2D Data Eye Results in ABL Log for each DQ, Chipselect, and Channel.

Configuration options: [Disabled] [Enabled] [Auto]

DDR Data Eye

Pattern Select

Configuration options: [PRBS] [SSO] [Both]

Pattern Length

This token helps to determine the pattern length. The possible options are N=3...12.

Configuration options: [3] - [9]

Aggressor Channel

This helps read the aggressors channels. If set to **[Enabled]**, you can read from one or more than one aggressor channel. The default is set to **[Disabled]**.

Configuration options: [Disabled] [1 Aggressor Channel] [3 Aggressor Channels] [7 Aggressor Channels]

DDR Memory Features

This item allows you to configure DDR Memory Features.

Memory Context Restore

Allows you to configure the memory context restore mode. When enabled, DRAM re-training is avoided when possible and the POST latency is minimized.

Configuration options: [Auto] [Enabled] [Disabled]

NBIO Common Options

PCIe ARI Support

Allows you to enable or disable ARI.

Configuration options: [Disabled] [Enabled] [Auto]

PCIe ARI Enumeration

Allows you to enable or disable ARI forwarding for each downstream port.

Configuration options: [Disabled] [Enabled] [Auto]

PSPP Policy

Configuration options: [Disabled] [Balanced] [Auto]

GFX Configuration

This item allows you to configure GFX Configuration.

UMA Version

[Legacy]	UMA Legacy Version
[Non-Legacy]	UMA Non-Legacy Version
[Auto]	Hybrid Secure

GPU Host Translation Cache

Allows you to enable or disable GPU Host Translation Cache.
Configuration options: [Disabled] [Enabled] [Auto]

Audio Configuration

This item allows you to configure Audio Configuration.

NB Azalia

Allows you to enable or disable the integrated HD audio controller.
Configuration options: [Disabled] [Enabled] [Auto]

Audio IOs

Configuration options: [Auto] [HDA(3SDI) + PDM(2CH)(Default)] [HDA (1SDI) + PDM(6CH)] [HDA(1SDI) + SW0(1MDATA) + PDM(2CH)] [SW0(4MDATA) + PDM(6CH)] [SW0(4MDATA) + SW1(1MDATA) + PDM(2CH)]

Pcie loopback Mode

Allows you to enable or disable PcieLoopBackMode.
Configuration options: [Auto] [Disabled] [Enabled]

SMU Common Options

TDP Control

[Auto]	Use the default sustained power limit.
[Manual]	User can set customized sustained power limit.



The following item appears only when **TDP Control** is set to **[Manual]**.

TDP

Allows you to set the sustained power limit [mW].

PPT Control

[Auto]	Use the default PPT Limits.
[Manual]	User can set customized PPT Limits.



The following item appears only when **PPT Control** is set to **[Manual]**.

PPT

Allows you to set the PPT [mW].

Thermal Control

[Auto]	Use the default TctlMax.
[Manual]	User can set customized TctlMax.



The following item appears only when **Thermal Control** is set to **[Manual]**.

TjMax

Allows you to set the maximum operating temperature [°C] (IRM limit will be enforced).

TDC Control

[Auto] Use the default TDC Limits.
[Manual] User can set customized TDC Limits.



The following item appears only when **TDC Control** is set to **[Manual]**.

TDC_VDDCR_VDD

Allows you to set the VDDCR_VDD TDC Limit [mA] (IRM limit will be enforced).

EDC Control

[Auto] Use the default EDC Limits.
[Manual] User can set customized EDC Limits.



The following item appears only when **EDC Control** is set to **[Manual]**.

TDC_VDDCR_VDD

Allows you to set the VDDCR_VDD EDC Limit [mA] (IRM limit will be enforced).

PROCHOT Control

[Auto] Use the default PROCHOT deassertion ramp time.
[Manual] User can set customized PROCHOT deassertion ramp time.



The following item appears only when **PROCHOT Control** is set to **[Manual]**.

ROCHOT Deassertion Ramp Time

Allows you to set the ROCHOT deassertion ramp time [ms] (IRM limit will be enforced).

Fan Control

[Auto] Use the default fan controller settings.
[Manual] User can set customized fan controller setting.



The following item appears only when **Fan Control** is set to **[Manual]**.

Fan Table Control

[Auto] Use the default fan table.
[Manual] User can set customized fan table.



The following items appear only when **Fan Table Control** is set to **[Manual]**.

Low Temperature

Allows you to set the low temperature [°C].
Configuration options: [0] - [255]

Medium Temperature

Allows you to set the medium temperature [°C].
Configuration options: [0] - [255]

High Temperature

Allows you to set the high temperature [°C].
Configuration options: [0] - [255]

Critical Temperature

Allows you to set the critical temperature [°C].
Configuration options: [0] - [255]

Low Pwm

Configuration options: [0] - [100]

Medium Pwm

Configuration options: [0] - [100]

High Pwm

Configuration options: [0] - [100]

Temperature Hysteresis

Allows you to set the temperature hysteresis [°C].

Configuration options: [0] - [255]

PWM Frequency

[Auto] Sets to the default option

[1] 100Hz

[0] 25kHz

Fan Polarity

[Auto] Sets to the default option

[1] Positive

[0] Negative

VDDP Voltage Control

[Auto] Use the default VDDP Voltage.

[Manual] User can set custom VDDP Voltage.



The following items appear only when **VDDP Voltage Control** is set to **[Manual]**.

VDDP Voltage

Allows you to specify the target VDDP voltage [mV].

Configuration options: [0] - [2000]

Infinity Fabric Frequency and Dividers

Configuration options: [Auto] [100 MHz] - [1066 MHz]

FEATURE FCLK DPM

Configuration options: [Auto] [Disabled] [Enabled]

SyncFifo Mode Override

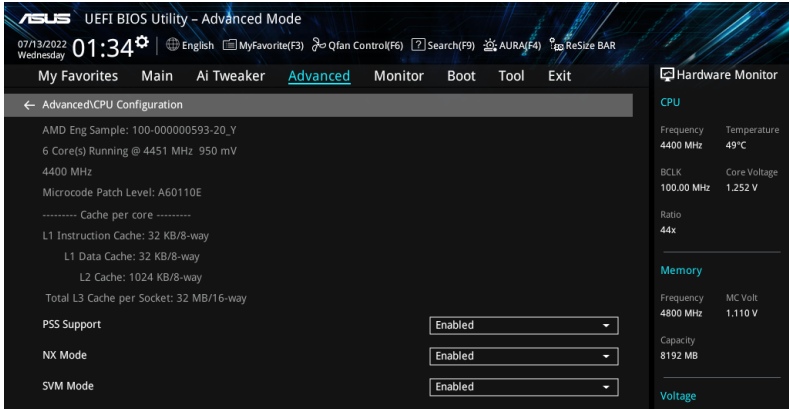
Configuration options: [Disable] [Enable] [Auto]

6.4 CPU Configuration

The items in this menu show the CPU-related information that the BIOS automatically detects. Scroll down to display other BIOS items.



The items in this menu may vary based on the CPU installed.



PSS Support

Allows you to enable or disable the generation of ACPI_PPC, and _PCT objects.
Configuration options: [Disabled] [Enabled]

NX Mode

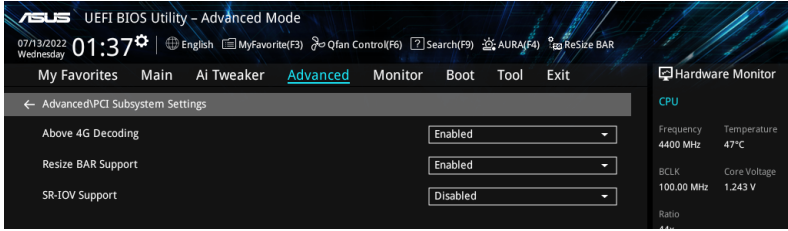
Allows you enable or disable No-execute page protection Function.
Configuration options: [Disabled] [Enabled]

SVM Mode

Allows you enable or disable CPU Virtualization.
Configuration options: [Disabled] [Enabled]

6.5 PCI Subsystem Settings

The items in this menu allow you to configure PCI, PCI-X, and PCI Express settings.



Above 4G Decoding

Allows you to enable or disable 64bit capable Devices to be Decoded in Above 4G Address Space (Only if System supports 64 bit PCI Decoding).

Configuration options: [Disabled] [Enabled]



- Only enabled under 64bit operating system.
- The following item appears only when **Above 4G Decoding** is set to **[Enabled]**.

Re-Size BAR Support

If the system has Resizable BAR capable PCIe Devices, this option enables or disables Resizable BAR Support (Only if System supports 64 bit PCI Decoding).

Configuration options: [Disabled] [Enabled]



To enable Re-Size BAR Support for harnessing full GPU memory, please go to the **Boot** section and set **CSM(Compatibility Support Module)** to **[Disabled]**.

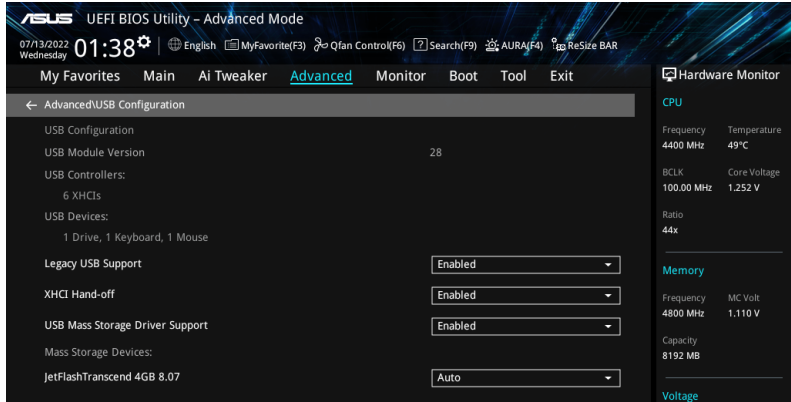
SR-IOV Support

Allows you to enable or disable Single Root IO Virtualization Support if the system has SR-IOV capable PCIe devices.

Configuration options: [Disabled] [Enabled]

6.6 USB Configuration

The items in this menu allow you to change the USB-related features.



The **Mass Storage Devices** item shows the auto-detected values. If no USB device is detected, the item shows **None**.

Legacy USB Support

- [Enabled] Your system supports the USB devices in legacy operating systems.
- [Disabled] Your USB devices can be used for BIOS setup only and cannot be recognized in the boot devices list.
- [Auto] Your system automatically detects the presence of USB devices at startup. If any USB devices are detected, the legacy USB support is enabled.

XHCI Hand-off

This is a workaround for OSEs without XHCI hand-off support. The XHCI ownership change should be claimed by XHCI driver.

- [Disabled] Support XHCI by XHCI drivers for operating systems with XHCI support.
- [Enabled] Support XHCI by BIOS for operating systems without XHCI support.

USB Mass Storage Driver Support

Allows you to enable or disable USB Mass Storage Driver Support
Configuration options: [Disabled] [Enabled]

Mass Storage Devices:

Allows you to select the mass storage device emulation type for devices connected. [Auto] enumerates devices according to their media format. Optical drives are emulated as [CD-ROM], drives with no media will be emulated according to a drive type.
Configuration options: [Auto] [Floppy] [Forced FDD] [Hard Disk] [CD-ROM]

USB Single Port Control

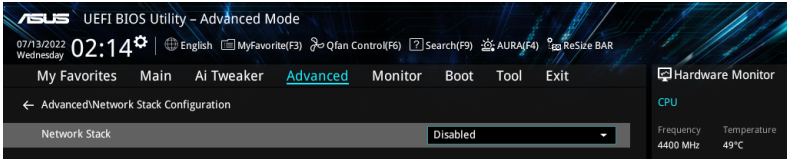
Allows you to enable or disable the individual USB ports.



Refer to section **Motherboard layout** and **Rear I/O connection** in your motherboard's user guide for the location of the USB ports.

6.7 Network Stack Configuration

The items in this menu allow you to change the Network Stack Configuration.



Network stack

Allows you to disable or enable the UEFI network stack.

Configuration options: [Disabled] [Enabled]



The following items appear only when **Network Stack** is set to **[Enabled]**.

Ipv4/Ipv6 PXE Support

Allows you to enable or disable the Ipv4/Ipv6 PXE boot support.

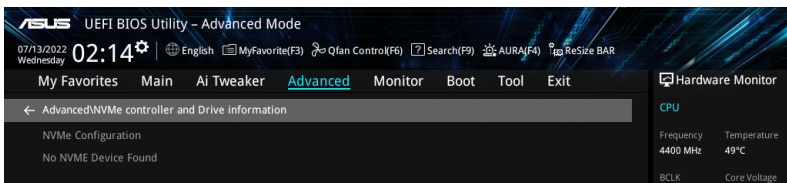
Configuration options: [Disabled] [Enabled]

6.8 NVMe Configuration

This menu displays the NVMe controller and Drive information of the connected devices. You may press <Enter> on a connected NVMe device which appears in this menu to view more information on the NVMe device.



The options displayed in this menu may vary depending on the devices connected to your motherboard. Please refer to the BIOS of your motherboard for the actual settings and options.

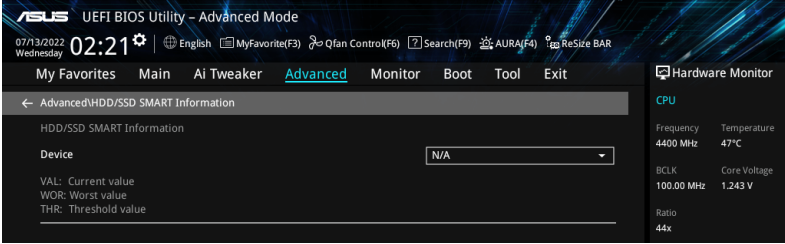


6.9 HDD/SSD SMART Information

The items in this menu allow you to view the SMART information for connected storage devices.



The options displayed in this menu may vary depending on the devices connected to your motherboard. Please refer to the BIOS of your motherboard for the actual settings and options.



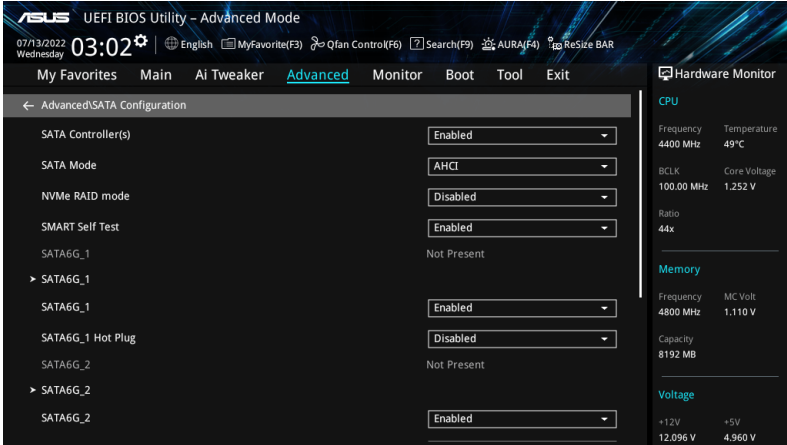
NVM Express devices do not support SMART information.

6.10 SATA Configuration

While entering Setup, the BIOS automatically detects the presence of SATA devices. The SATA Port items show **Empty** if no SATA device is installed to the corresponding SATA port. Scroll down to display the other BIOS items.



The settings and options of this menu may vary depending on your motherboard. Please refer to the BIOS of your motherboard for the actual settings and options.



SATA Controller(s)

Allows you to enable or disable the SATA Device.

Configuration options: [Disabled] [Enabled]



The following items appear only when **SATA Controller(s)** is set to **[Enabled]**.

SATA Mode

This item allows you to set the SATA configuration.

[AHCI] Set to [AHCI] when you want the SATA hard disk drives to use the AHCI (Advanced Host Controller Interface). The AHCI allows the onboard storage driver to enable advanced Serial ATA features that increases storage performance on random workloads by allowing the drive to internally optimize the order of commands.

[RAID] Set to [RAID] when you want to create a RAID configuration from the SATA hard disk drives.

NVMe RAID Mode

This item allows you to enable or disable the NVMe RAID mode.

Configuration options: [Disabled] [Enabled]

SMART Self Test

S.M.A.R.T. (Self-Monitoring, Analysis and Reporting Technology) is a monitoring system that shows a warning message during POST (Power-on Self Test) when an error occurs in the hard disks.

Configuration options: [Disabled] [Enabled]

SATA6G_1 - SATA6G_4

Allows you to enable or disable the selected SATA port.

Configuration options: [Disabled] [Enabled]

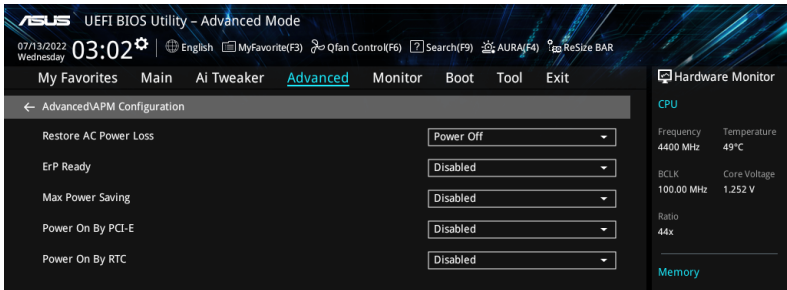
SATA6G_1 - SATA6G_4 Hot Plug

Designates this port as Hot Pluggable.

Configuration options: [Disabled] [Enabled]

6.11 APM Configuration

The items in this menu allow you to change the advanced power management settings.



Restore AC Power Loss

Allows your system to go to ON state, OFF state, or both states after an AC power loss.

When setting your system to **[Last State]**, it goes to the previous state before the AC power loss.

Configuration options: [Power Off] [Power On] [Last State]

ErP Ready

Allows you to switch off some power at S4+S5 or S5 to get the system ready for ErP requirement. When set to **[Enabled]**, all other PME options are switched off. RGB LEDs and RGB/Addressable RGB Headers will also be disabled.

Configuration options: [Disabled] [Enabled (S4+S5)] [Enabled (S5)]

Max Power Saving

Configuration options: [Disabled] [Enabled]

Power On By PCI-E

Allows you to enable or disable the Wake-on-LAN function of the onboard LAN controller or other installed PCI-E LAN cards.

Configuration options: [Disabled] [Enabled]

Power On By RTC

Allows you to enable or disable the RTC (Real-Time Clock) to generate a wake event and configure the RTC alarm date. When enabled, you can set the days, hours, minutes, or seconds to schedule an RTC alarm date.

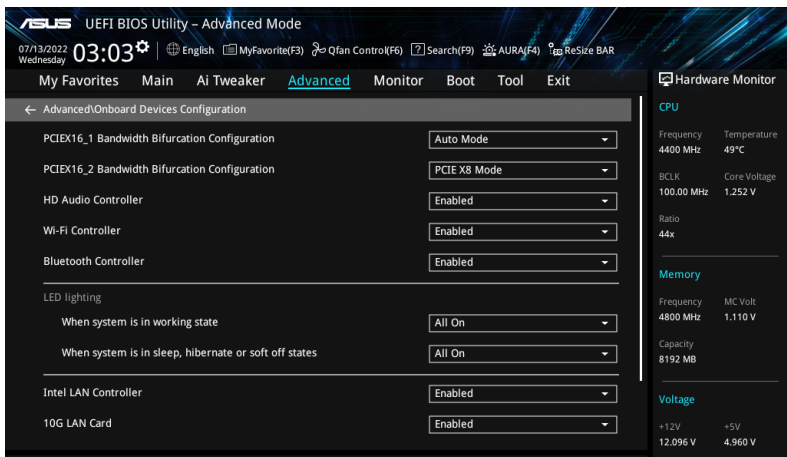
Configuration options: [Disabled] [Enabled]

6.12 Onboard Devices Configuration

The items in this menu allow you to change the onboard devices settings. Scroll down to view the other BIOS items.



The settings and options of this menu may vary depending on your motherboard. Please refer to the BIOS of your motherboard for the actual settings and options.



PCIEX16_1 Bandwidth Bifurcation Configuration

[Auto Mode]

Auto-detect and switch. If PCIe device is inserted to PCIEX16_1, switch PCIEX16_1 to x8. If no device is inserted to PCIEX16_2, switch to PCIEX16_1 to x16.

[PCIe X16 Mode]

Switch PCIEX16_1 to x16, and disable PCIEX16_2.

[PCIe RAID Mode]

Up to 4 SSDs installed onto the Hyper M.2 X16 Series card can be detected.



Use **[PCIe RAID Mode]** when installing the Hyper M.2 X16 series card or other M.2 adapter cards. Installing other devices may result in a boot-up failure. The number of SSDs supported varies with the PCIe bifurcation abilities enabled by each processor.

PCIEX16_2 Bandwidth Bifurcation Configuration

- [PCIEX8 Mode] Switch PCIEX16_2 to x8.
- [PCIEX16 Mode] Up to 2 SSDs installed onto the Hyper M.2 X16 Series card can be detected.



Use **[PCIEX16 Mode]** when installing the Hyper M.2 X16 series card or other M.2 adapter cards. Installing other devices may result in a boot-up failure. The number of SSDs supported varies with the PCIe bifurcation abilities enabled by each processor.

HD Audio Controller

Allows you to enable or disable Azalia HD Audio.
Configuration options: [Disabled] [Enabled]

Wi-Fi Controller

Allows you to enable or disable Wi-Fi Controller.
Configuration options: [Disabled] [Enabled]

Bluetooth Controller

Allows you to enable or disable Bluetooth Controller.
Configuration options: [Disabled] [Enabled]

LED lighting

When system is in working state

Allows you to turn the RGB LED lighting on or off when the system is in the working state.

[All On] RGB LEDs and Functional will behave normally.

[Stealth Mode] All LEDs will be disabled.

[Aura Only] RGB LEDs will light up, while all functional LEDs will be disabled.

[Aura Off] Functional LEDs behave normally, while RGB LEDs will be disabled.



The RGB Header(s) and Addressable Header(s) will only work under the S0 (working) state.

When system is in sleep, hibernate or soft off states

Allows you to turn the RGB LED lighting on or off when the system is in the sleep, hibernate or soft off states.

[All On] RGB LEDs and Functional will behave normally.

[Stealth Mode] All LEDs will be disabled.

[Aura Only] RGB LEDs will light up, while all functional LEDs will be disabled.

[Aura Off] Functional LEDs behave normally, while RGB LEDs will be disabled.



The RGB Header(s) and Addressable Header(s) will only work under the S0 (working) state.

Intel LAN Controller

Allows you to enable or disable Intel LAN Controller.
Configuration options: [Disabled] [Enabled]

10G LAN Card

Allows you to enable or disable the 10G LAN card.

Configuration options: [Disabled] [Enabled]

USB power delivery in Soft Off state (S5)

Allows you to enable or disable USB power when your PC is in the S5 state.

Configuration options: [Disabled] [Enabled]

Serial Port Configuration

This submenu allows you to set parameters for Serial Port.



This item will only function if there is a serial port (COM) connector on your motherboard.

Serial Port

Allows you to enable or disable the Serial port.

Configuration options: [Enabled] [Disabled]



The following item appears only when **Serial Port** is set to **[Enabled]**.

Change settings

Allows you to select an optimal setting for super IO device.

Configuration options: [IO=3F8h; IRQ=4] [IO=2F8h; IRQ=3] [IO=3E8h; IRQ=4]
[IO=2E8h; IRQ=3]

PCIe Link Speed

This submenu allows you to set parameters for PCIe Link Speed.

PCIEX16_1 Link Mode

Allows you to set the link speed for PCIe16_1 Slot.

Configuration options: [Auto] [GEN 1] [GEN 2] [GEN 3] [GEN 4] [GEN 5]

PCIEX16_2 Link Mode

Allows you to set the link speed for PCIe16_2 Slot.

Configuration options: [Auto] [GEN 1] [GEN 2] [GEN 3] [GEN 4] [GEN 5]

M.2_1 Link Mode

Allows you to set the link speed for M.2_1 Device.

Configuration options: [Auto] [GEN 1] [GEN 2] [GEN 3] [GEN 4] [GEN 5]

Chipset_1 Link Mode

Allows you to set the link speed between CPU and Chipset_1.

Configuration options: [Auto] [GEN 1] [GEN 2] [GEN 3] [GEN 4]

M.2_2 Link Mode

Allows you to set the link speed for M.2_2 Device.

Configuration options: [Auto] [GEN 1] [GEN 2] [GEN 3] [GEN 4] [GEN 5]

M.2_4 Link Mode

Allows you to set the link speed for M.2_4 Device.

Configuration options: [Auto] [GEN 1] [GEN 2] [GEN 3] [GEN 4]

Chipset_2 Link Mode

Allows you to set the link speed between Chipset_1 and Chipset_2.
Configuration options: [Auto] [GEN 1] [GEN 2] [GEN 3] [GEN 4]

M.2_3 Link Mode

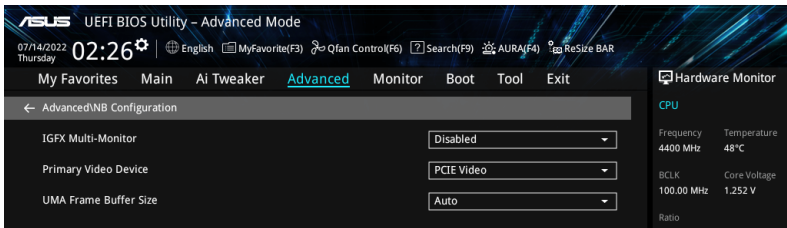
Allows you to set the link speed for M.2_3 Device.
Configuration options: [Auto] [GEN 1] [GEN 2] [GEN 3] [GEN 4]

PCIEX16 Link Mode

Allows you to set the link speed for PCIEX16 Slot.
Configuration options: [Auto] [GEN 1] [GEN 2] [GEN 3] [GEN 4]

6.13 NB Configuration

The items in this menu allow you to change the NB Configurations.



IGFX Multi-Monitor

Allows you to enable or disable the Internal Graphics Device Multi-Monitor Support for add-on VGA devices. The memory size of Internal Graphics Device will be reserved.
Configuration options: [Disabled] [Enabled]

Primary Video Device

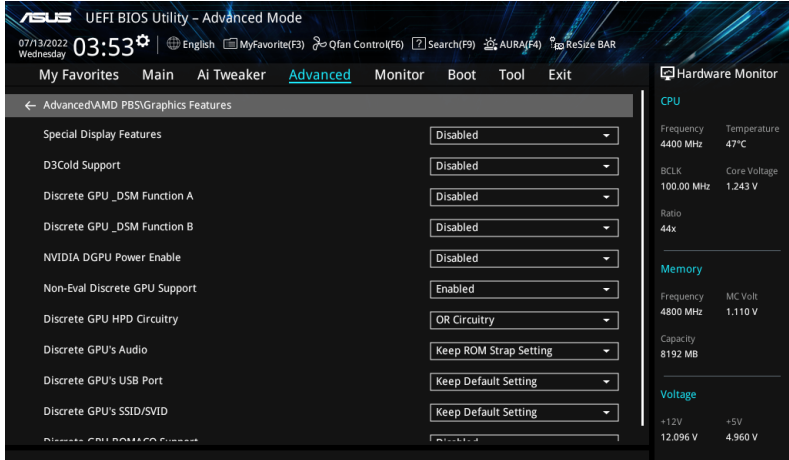
Allows you to select Primary Video Device BIOS will use for output.
Configuration options: [IGFX Video] [PCIe Video]

UMA Frame Buffer Size

Allows you to set the UMA FB Size.
Configuration options: [Auto] [64M] [80M] [96M] [128M] [256M] [384M] [512M] [768M] [1G] [2G] [3G] [4G]

6.14 AMD PBS

The items in this menu shows the AMD PBS Setup page.



Graphics Features

This submenu allows you to configure Graphics Features - HG, DGPU Features and BOMACO configurations.

Special Display Features

Allows you to enable or disable HybridGraphics.
Configuration options: [Disabled] [HybridGraphics]

D3Cold Support

Allows you to enable or disable PCIe x8 Slot D3Cold.
Configuration options: [Disabled] [Enabled] [Dummy D3Cold]

Discrete CPU_DSM Function A

Allows you to enable or disable PCI-SIG ECN_DSM Function A for Discrete GPU's GPP Bridge.
Configuration options: [Disabled] [Enabled]

Discrete CPU_DSM Function B

Allows you to enable or disable PCI-SIG ECN_DSM Function B for Discrete GPU's GPP Bridge.
Configuration options: [Disabled] [Enabled]

NVIDIA DGPU Power Enable

For NVIDIA mobile DGPU card only. Output DGPU_EN# A19 pin and DGPU_SEL# B17 pin to high at every power on state.
Configuration options: [Disabled] [Enabled]

Non-Eval Discrete GPU Support

Set to [Enabled] to support Non-Eval Discrete GPU that doesn't have specific EVAL_PWRGD(B30), EVAL_PRESENT#(A5).
Configuration options: [Disabled] [Enabled]

Discrete GPU HPD Circuitry

Allows you to enable or disable Discrete GPU Display HPD Circuitry.
Configuration options: [OR Circuitry] [Pulse Circuitry]

Discrete GPU's Audio

Allows you to disable Discrete GPU's Audio or keep its ROM strap setting.
Configuration options: [Disabled] [Keep ROM Strap Setting]

Discrete GPU's USB Port

Allows you to disable Discrete GPU's USB Port or keep default setting.
Configuration options: [Keep Default Setting] [Disabled]

Discrete GPU's SSID/SVID

Program Discrete GPU's SSID/SVID depends on HybridGraphics setting.
Configuration options: [Keep Default Setting] [Program by Vendor]

Discrete GPU BOMACO Support

Allows you to enable or disable Discrete GPU BOMACO Support.
Configuration options: [Disabled] [Enabled]

Thunderbolt / USB4 Support

Allows you to enable or disable Thunderbolt / USB4 support.
Configuration options: [Disabled] [Enabled]



The following items appear only when **Thunderbolt / USB4 Support** is set to **[Enabled]**.

Thunderbolt / USB4 Security Level

Allows you to select the Thunderbolt / USB4 Security Level.
Configuration options: [No Security] [USB4 controller only]

Thunderbolt / USB4 MMIO Resource

Allows you to select Thunderbolt / USB4 PCIE MMIO Resource.
Configuration options: [Full Size] [Half Size] [Three Quarters]

Thunderbolt / USB4 Wake Up Command

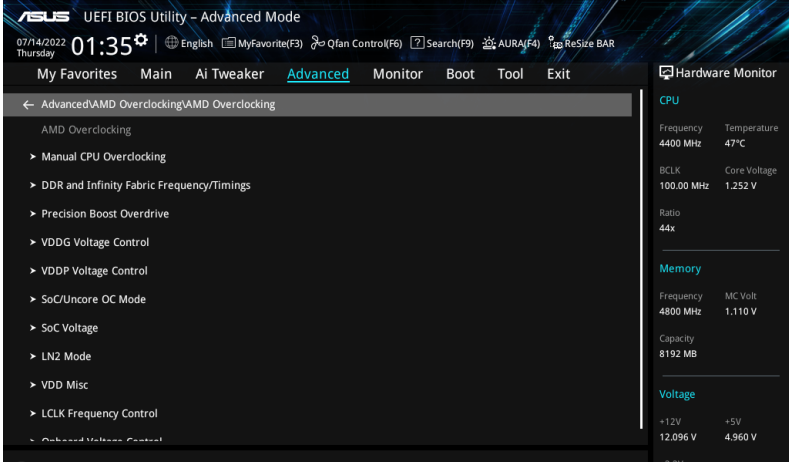
Allows you to select Thunderbolt / USB4 Wake Up Command.
Configuration options: [Disabled] [GOSX Command] [GO2SX_NO_WAKE Command]

6.15 AMD Overclocking

The items in this menu shows the AMD Overclocking Setup page.



The configuration options for this section vary depending on the motherboard. Please refer to the BIOS of your motherboard for the actual settings and options.



Damage caused by use of your AMD processor outside of specification or in excess of factory settings are not covered by your system manufacturers warranty.



The following items appear only when **[Accept]** is selected for **DRAM Timing Configuration**.

Manual CPU Overclocking

CPU Frequency

Specifies a custom CPU core frequency. Should be combined with a custom CPU voltage. Power saving features for idle cores (e.g. cc6 sleep) remain active.

CPU Voltage

Specifies a custom CPU core voltage (mV). Should be combined with a custom CPU voltage. Power saving features for idle cores (e.g. cc6 sleep) remain active. Stepping is 5mV

CPU Core Count Control

CCD 00 Bit Map Down Core Control

Setting this item to 1 means core is enabled, setting this item to 0 means core is software down.

Bit Map Down Core Discard Changes

Discard changes.

Bit Map Down Core Apply Changes

Check and apply changes, need to make sure core number is equal in each CCD.

SMT Control

Can be used to disable symmetric multithreading. To re-enable SMT, a POWER CYCLE is needed after selecting the **[Auto]** option.

Configuration options: **[Auto]** **[Disable]**



S3 is NOT SUPPORTED on systems where SMT is disabled.

DDR and Infinity Fabric Frequency/Timings

DDR Options

DDR Timing Configuration

Active Memory Timing Settings

Configuration options: **[Auto]** **[Enabled]**



The following items appear only when **Active Memory Timing Settings** is set to **[Enabled]**.

Memory Target Speed

Specifies the memory target speed in MT/s. The valid input is 2000 MT/s, 2400 MT/s, and range of 3200 MT/s ~ 12000 MT/s (stepping of 200 MT/s). The user input value will be rounded down to align with the stepping of 200 MT/s.

DDR SPD Timing

Tcl Ctrl

[Auto] Follow default setting.
[Manual] Manually specify.



The following item appears only when **Tcl Ctrl** is set to **[Manual]**.

Tcl

Specifies the CAS Latency. Valid values: 0x16 ~ 0x40, with a stepping of 2. The value is in hex.

Trcd Ctrl

[Auto] Follow default setting.
[Manual] Manually specify.



The following item appears only when **Trcd Ctrl** is set to **[Manual]**.

Trcd

Specifies the RAS# Active to CAS# Read Delay Time. Valid values: 0x8 ~ 0x3E with a stepping of 2. The value is in hex.

Trp Ctrl

[Auto] Follow default setting.
[Manual] Manually specify.



The following item appears only when **Trp Ctrl** is set to **[Manual]**.

Trp

Specifies Row Precharge Delay Time. Valid values: 0x8 ~ 0x3E with a stepping of 2. The value is in hex.

Tras Ctrl

[Auto] Follow default setting.
[Manual] Manually specify.



The following item appears only when **Tras Ctrl** is set to **[Manual]**.

Tras

Specifies Active to Precharge Delay Time. Valid values: 0x1E - 0x7E with a stepping of 2.

Trc Ctrl

[Auto] Follow default setting.
[Manual] Manually specify.



The following item appears only when **Trc Ctrl** is set to **[Manual]**.

Trc

Specifies Active to Active/Refresh Delay Time. Valid values: 0x20 - 0xFF. The value is in hex.

Twr Ctrl

[Auto] Follow default setting.
[Manual] Manually specify.



The following item appears only when **Twr Ctrl** is set to **[Manual]**.

Twr

Specifies the Minimum Write Recovery Time. Valid values: 0x30 - 0x60. The value is in hex.

Trfc1 Ctrl

[Auto] Follow default setting.
[Manual] Manually specify.



The following item appears only when **Trfc1 Ctrl** is set to **[Manual]**.

Trfc1

Specifies the Refresh Recovery Delay Time (tRFC1). Valid values: 0x32 - 0xFFF. The value is in hex.

Trfc2 Ctrl

[Auto] Follow default setting.
[Manual] Manually specify.



The following item appears only when **Trfc2 Ctrl** is set to **[Manual]**.

Trfc2

Specifies the Refresh Recovery Delay Time (tRFC2). Valid values: 0x32 - 0xFFF. The value is in hex.

TrfcSb Ctrl

[Auto] Follow default setting.
[Manual] Manually specify.



The following item appears only when **TrfcSb Ctrl** is set to **[Manual]**.

TrfcSb

Specifies the Refresh Recovery Delay Time (tRFCSB). Valid values: 0x32 ~ 0x7FF. The value is in hex.

Trtp Ctrl

[Auto]	Follow default setting.
[Manual]	Manually specify.



The following item appears only when **Trtp Ctrl** is set to **[Manual]**.

Trtp

Specifies the Read CAS# to Precharge command delay time. Valid values: 0x5 ~ 0x1F. The value is in hex.

TrrdL Ctrl

[Auto]	Follow default setting.
[Manual]	Manually specify.



The following item appears only when **TrrdL Ctrl** is set to **[Manual]**.

TrrdL

Specifies the Activate to Activate Delay Time, same bank group (tRRD_L). Valid values: 0x4 ~ 0x20. The value is in hex.

TrrdS Ctrl

[Auto]	Follow default setting.
[Manual]	Manually specify.



The following item appears only when **TrrdS Ctrl** is set to **[Manual]**.

TrrdS

Specifies the Activate to Activate Delay Time, different bank group (tRRD_S). Valid values: 0x4 ~ 0x14. The value is in hex.

Tfaw Ctrl

[Auto]	Follow default setting.
[Manual]	Manually specify.



The following item appears only when **Tfaw Ctrl** is set to **[Manual]**.

Tfaw

Specifies the Four Activate Window Time. Valid values: 0x14 ~ 0x50. The value is in hex.

TwtrL Ctrl

[Auto]	Follow default setting.
[Manual]	Manually specify.



The following item appears only when **TwtrL Ctrl** is set to **[Manual]**.

TwtrL

Specifies the Minimum Write to Read Time, the same bank group. Valid values: 0x8 ~ 0x30. The value is in hex.

TwtrS Ctrl

[Auto] Follow default setting.
[Manual] Manually specify.



The following item appears only when **TwtrS Ctrl** is set to **[Manual]**.

TwtrS

Specifies the Minimum Write to Read Time, different bank group.
Valid values: 0x2 ~ 0x10. The value is in hex.

DDR Non-SPD Timing

TrdrdScL Ctrl

[Auto] Follow default setting.
[Manual] Manually specify.



The following item appears only when **TrdrdScL Ctrl** is set to **[Manual]**.

TrdrdScL

Specifies the CAS to CAS delay time, same bank group. Valid values:
0x1 ~ 0xF. The value is in hex.

TrdrdSc Ctrl

[Auto] Follow default setting.
[Manual] Manually specify.



The following item appears only when **TrdrdSc Ctrl** is set to **[Manual]**.

TrdrdSc

Specifies the Read to Read turnaround timing in the same chipselect.
Valid values: 0x1 ~ 0xF. The value is in hex.

TrdrdSd Ctrl

[Auto] Follow default setting.
[Manual] Manually specify.



The following item appears only when **TrdrdSd Ctrl** is set to **[Manual]**.

TrdrdSd

Specifies the Read to Read turnaround timing in the same DIMM.
Valid values: 0x1 ~ 0xF. The value is in hex.

TrdrdDd Ctrl

[Auto] Follow default setting.
[Manual] Manually specify.



The following item appears only when **TrdrdDd Ctrl** is set to **[Manual]**.

TrdrdDd

Specifies the Read to Read turnaround timing in a different DIMM.
Valid values: 0x1 ~ 0xF. The value is in hex.

TwrrwScL Ctrl

[Auto] Follow default setting.
[Manual] Manually specify.



The following item appears only when **TwrrwScL Ctrl** is set to **[Manual]**.

TwrrwScL

Specifies the CAS to CAS Delay Time, same bank group. Valid values: 0x1 ~ 0x3F. The value is in hex.

TwrrwSc Ctrl

[Auto] Follow default setting.
[Manual] Manually specify.



The following item appears only when **TwrrwSc Ctrl** is set to **[Manual]**.

TwrrwSc

Specifies the Write to Write turnaround timing in the same chipselect. Valid values: 0x1 ~ 0xF. The value is in hex.

TwrrwSd Ctrl

[Auto] Follow default setting.
[Manual] Manually specify.



The following item appears only when **TwrrwSd Ctrl** is set to **[Manual]**.

TwrrwSd

Specifies the Write to Write turnaround timing in the same DIMM. Valid values: 0x1 ~ 0xF. The value is in hex.

TwrrwDd Ctrl

[Auto] Follow default setting.
[Manual] Manually specify.



The following item appears only when **TwrrwDd Ctrl** is set to **[Manual]**.

TwrrwDd

Specifies the Write to Write turnaround timing in a different DIMM. Valid values: 0x1 ~ 0xF. The value is in hex.

Twrrd Ctrl

[Auto] Follow default setting.
[Manual] Manually specify.



The following item appears only when **Twrrd Ctrl** is set to **[Manual]**.

Twrrd

Specifies the Write to Read turnaround timing. Valid values: 0x1 ~ 0xF. The value is in hex.

Trdwr Ctrl

[Auto] Follow default setting.
[Manual] Manually specify.



The following item appears only when **Trdwr Ctrl** is set to **[Manual]**.

Trdwr

Specifies the Read to Write turnaround timing. Valid values: 0x1 ~ 0x1F. The value is in hex.

DDR BUS Configuration

Processor CA drive strengths

Specifies the Processor CA drive strengths.
Configuration options: [Auto] [120.0 Ohm] [60.0 Ohm] [40.0 Ohm] [30.0 Ohm]

Processor DQ drive strengths

Specifies the Processor DQ drive strengths.
Configuration options: [Auto] [High Impedance] [240 ohm] [120 ohm] [80 ohm] [60 ohm] [48 ohm] [40 ohm] [34.3 ohm]

Processor ODT impedance

Specifies the Processor ODT impedance.
Configuration options: [Auto] [High Impedance] [480 ohm] [240 ohm] [160 ohm] [120 ohm] [96 ohm] [80 ohm] [68.8 ohm] [60 ohm]

Dram DQ drive strengths

Specifies the DRAM DQ drive strengths.
Configuration options: [Auto] [48 ohm] [40 ohm] [34 ohm]

Dram ODT impedance RTT_NOM_WR

Specifies the DRAM ODT impedance RTT_NOM_WR.
Configuration options: [Auto] [RTT_OFF] [RZQ (240)] [RZQ/2 (120)] [RZQ/3 (80)] [RZQ/4 (60)] [RZQ/5 (48)] [RZQ/6 (40)] [RZQ/7 (34)]

Dram ODT impedance RTT_NOM_RD

Specifies the DRAM ODT impedance RTT_NOM_RD.
Configuration options: [Auto] [RTT_OFF] [RZQ (240)] [RZQ/2 (120)] [RZQ/3 (80)] [RZQ/4 (60)] [RZQ/5 (48)] [RZQ/6 (40)] [RZQ/7 (34)]

Dram ODT impedance RTT_WR

Specifies the DRAM ODT impedance RTT_WR.
Configuration options: [Auto] [RTT_OFF] [RZQ (240)] [RZQ/2 (120)] [RZQ/3 (80)] [RZQ/4 (60)] [RZQ/5 (48)] [RZQ/6 (40)] [RZQ/7 (34)]

Dram ODT impedance RTT_PARK

Specifies the DRAM ODT impedance RTT_PARK.
Configuration options: [Auto] [RTT_OFF] [RZQ (240)] [RZQ/2 (120)] [RZQ/3 (80)] [RZQ/4 (60)] [RZQ/5 (48)] [RZQ/6 (40)] [RZQ/7 (34)]

Dram ODT impedance DQS_RTT_PARK

Specifies the DRAM ODT impedance DQS_RTT_PARK.
Configuration options: [Auto] [RTT_OFF] [RZQ (240)] [RZQ/2 (120)] [RZQ/3 (80)] [RZQ/4 (60)] [RZQ/5 (48)] [RZQ/6 (40)] [RZQ/7 (34)]

DDR Controller Configuration

DDR Power Options

Power Down Enable

Allows you to enable or disable DDR power down mode.
Configuration options: [Disabled] [Enabled] [Auto]

Infinity Fabric Frequency and Dividers

Infinity Fabric Frequency and Dividers

Allows you to set Infinity Fabric Frequency (FCLK). Auto = FCLK = MCLK. Manual = FCLK must be less than MCLK for best performance in most cases. Latency penalties are incurred if FCLK and MCLK are mismatched, but sufficiently high MCLK can negate or overcome this penalty.

Configuration options: [Auto] [100 MHz] - [2000 MHz]

UCLK DIV1 MODE

Allows you to set UCLK DIV mode.

Configuration options: [Auto] [UCLK=MEMCLK] [UCLK=MEMCLK/2]

Precision Boost Overdrive

Precision Boost Overdrive

When this item is enabled, it allows the processor to run beyond defined values for PPT, VDD_CPU EDC, VDD_CPU TDC, VDD_SOC EDC, VDD_SOC TDC to the limits of the board, and allows it to boost at higher voltages for longer durations than default operation.

Configuration options: [Auto] [Disabled] [Enabled] [Manual]



The following items appear only when **Precision Boost Overdrive** is set to **[Manual]**.

PBO Limits

- [Auto] Loads AMD default socket power (PPT), electrically-limited VRM current (EDC), and thermally-limited VRM current (TDC) limits.
- [Disable] Disabled PBO limits.
- [Motherboard] Allows the processor to run according to increased PPT, EDC, and TDC limits defined by your motherboard.
- [Manual] Allows the processor to ignore AMD default limits for PPT, EDC, and TDC and instead use manual values (up to the maximum capabilities of the motherboard).



The following items appear only when **PBO Limits** is set to **[Manual]**.

PPT Limit [mW]

Adjust total CPU socket power delivery capability. Adjustable up to the limit supported by your motherboard.

TDC Limit [mA]

Adjust peak current from your motherboard's CPU core VRM phases in thermally-limited scenarios. Adjustable up to the limit supported by you motherboard.

EDC Limit [mA]

Adjust peak current from your motherboard's CPU core VRM phases in electrically-limited scenarios. Adjustable up to the limit supported by you motherboard.

Precision Boost Overdrive Scalar Ctrl

Configuration options: [Auto] [Manual]



The following item appears only when **Precision Boost Overdrive Scalar Ctrl** is set to **[Manual]**.

Precision Boost Overdrive Scalar

Overrides the AMD default silicon health management to potentially achieve higher sustained frequencies under CPU load.

Configuration options: [1X] - [10X]

CPU Boost Clock Override

Increases (Positive) or Decreases (Negative) the maximum CPU frequency that may be automatically achieved by the CPU Boost Algorithm.

Configuration options: [Disabled] [Enabled (Positive)] [Enabled (Negative)]



The following item appears only when **CPU Boost Clock Override** is set to **[Enabled (Positive)]**.

Max CPU Boost Clock Override(+)

Increases the maximum CPU frequency that may be automatically achieved by the Precision Boost 2 algorithm. Use the <+> or <-> to adjust the value. The values range from 25 to 200 with an interval of 25.

Configuration options: [Auto] [0] - [200]



The following item appears only when **CPU Boost Clock Override** is set to **[Enabled (Negative)]**.

Max CPU Boost Clock Override(-)

Decreases the maximum CPU frequency that may be automatically achieved by the Precision Boost 2 algorithm. Use the <+> or <-> to adjust the value. The values range from 25 to 200 with an interval of 25.

Configuration options: [Auto] [0] - [200]

Platform Thermal Throttle Ctrl

Allows the user to decrease the maximum allowed processor temperature (celsius)

Configuration options: [Manual] [Auto]



The following item appears only when **Platform Thermal Throttle Ctrl** is set to **[Manual]**.

Platform Thermal Throttle Limit

Configuration options: [0] - [255]

GFX Curve Optimizer

GFX Curve Optimizer

Allows the user to shift the GFX Voltage / Frequency (AVFS) curve to include higher voltages (positive values) or lower voltages (negative values). The larger the value entered the larger the magnitude of the voltage shift.

Configuration options: [Disable] [GFX Curve Optimizer]



The following items appear only when **GFX Curve Optimizer** is set to **[GFX Curve Optimizer]**.

GFX Curve Optimizer Sign

Determines the direction of the curve shift for GFX. Positive shifts the curve up to use higher voltages. Negative shifts the curve down to use lower voltages.

Configuration options: [Positive] [Negative]

GFX Curve Optimizer Magnitude

Determines the magnitude of the GFX curve shift to be made (entered in whole numbers) the larger the value entered the larger the magnitude of the shift. Field defaults to 0 and the user can enter whole integer numbers. Value entered, combined with the sign above, is used to send the SMU and GFX Curve Optimizer.

Configuration options: [0] - [30]

Curve Optimizer

Curve Optimizer

Allows the user to shift the Voltage / Frequency (AVFS) curve to include higher voltages (positive values) or lower voltages (negative values). The larger the value entered the larger the magnitude of the voltage limit.

Configuration options: [Disable] [All Cores] [Per Core]



The following items appear only when **Curve Optimizer** is set to **[All Cores]**.

All Core Curve Optimizer Sign

Determines the direction of the curve shift on all cores. Positive shifts the curve up to use higher voltages. Negative shifts the curve down to use lower voltages.

Configuration options: [Positive] [Negative]

All Core Curve Optimizer Magnitude

Determines the magnitude of the curve shift to be made (entered in whole numbers) the larger the value entered the larger the magnitude of the shift.

Configuration options: [0] - [30]



The following items appear only when **Curve Optimizer** is set to **[Per Core]**.

Core 0-5 Curve Optimizer Sign

Determines the direction of the curve shift on this core. Positive shifts the curve up to use higher voltages. Negative shifts the curve down to use lower voltages.

Configuration options: [Positive] [Negative]

Core 0-5 Curve Optimizer Magnitude

Determines the magnitude of the curve shift to be made to this core (entered in whole numbers) the larger the value entered the larger the magnitude of the shift.

Configuration options: [0] - [30]

VDDG Voltage Control

VDDG Voltage Control

VDDG represents voltage for the data portion of the Infinity Fabric. It is derived from the CPU SoC/Uncore Voltage (VDD_SOC). VDDG can approach but not exceed VDD_SOC.

Configuration options: [Auto] [Global VDDG Voltage Control] [Per-CCD VDDG Voltage Control]



The following items appear only when **VDDG Voltage Control** is set to **[Global VDDG Voltage Control]**.

Global VDDG CCD Voltage

VDDG CCD represents voltage for the data portion of the Infinity Fabric. It is derived from the VDD_MISC. Range is 650mV - 1650mV. Stepping is 10mV. Input voltage $63.6\text{mV} * N$ negative / positive based on 850mV will have minimum error of calculation.

Global VDDG IOD Voltage

VDDG IOD represents voltage for the data portion of the Infinity Fabric. It is derived from the VDD_MISC. Range is 650mV - 1650mV. Stepping is 10mV. Input voltage $63.6\text{mV} * N$ negative / positive based on 850mV will have minimum error of calculation.

VDDP Voltage Control

VDDP Voltage Control

Allows the user to adjust the VDDP voltage.

[Auto] VDDP is system default.

[Manual] Set voltage for the DDR bus signaling (PHY).



The following items appear only when **VDDP Voltage Control** is set to **[Manual]**.

VDDP Voltage Adjust

VDDP is a voltage for the DDR bus signaling (PHY), and it is derived from your DRAM Voltage (VDDIO_Mem). As a result, VDDP voltage in mV can approach but not exceed your DRAM Voltage.

Configuration options: [0] - [2000]

SoC/Uncore OC Mode

SoC/Uncore OC Mode

Forces CPU SoC/Uncore components (e.g. Infinity Fabric, memory, and integrated graphics) to run at their maximum specified frequency at all times. May improve performance at the expense of idle power savings.

Configuration options: [Auto] [Enabled] [Disabled]

SoC Voltage

SoC Voltage

Specifies the SoC/Uncore voltage (VDD_SOC) in mV to support memory and Infinity Fabric overclocking. VDD_SOC also determines the GPU voltage on processors with integrated graphics. This voltage can only change when one of 'SoC/Uncore OC Mode', 'UCLK', 'MCLK', [FCLK] is changed.

Configuration options: [0] - [2800]

LN2 Mode

LN2 Mode

Enables settings that provide additional stability at extreme cold operating temperatures.

Configuration options: [Auto] [Disabled] [Enabled]

VDD Misc

VDD Misc Control

Allows the user to adjust the VDD Misc Voltage.

[Auto] VDD MISC is set to system default.

[Manual] Set voltage for the GMI PHY.



The following item appears only when **VDD Misc Control** is set to **[Manual]**.

VDD Misc Voltage

Specifies the VDD MISC Voltage in mV, definitely follow SVI3 type 2 Slave VID (500-5600mV, step 10mV).

Configuration options: [500] - [5600]

LCLK Frequency Control

LCLK Frequency Control

- [Auto] Use default settings.
[Manual] Manually configure LCLK frequency.



The following item appears only when **LCLK Frequency Control** is set to **[Manual]**.

Maximum Frequency

Allows you to set the maximum LCLK frequency.
Configuration options: [1029] - [2500]

Onboard Voltage Control

VDDIO Voltage Control

VDDIO Ctrl

- Allows the user to adjust the VDDIO voltage.
[Auto] Use the default VDDIO voltage.
[Manual] Set DIMM VDD/VDDQ to synchronize to APU VDDIO.
[Separate] Independent control of APU VDDIO, DIMM VDD/VDDQ.



Running VDDQ != VDD is non-standard and may cause memory stability issues. Take care that during ramp down and ramp up, the VDDQ-VDD voltage must be less than 200mV.



The following item appears only when **LCLK Frequency Control** is set to **[Manual]** or **[Separate]**.

DIMM VDD Adjust

Adjust DIMM Power Supply, stepping is 10mV. Range is from 800mV to 1430mV. Take care that during ramp down and ramp up, the VDDQ-VDD voltage must be less than 200mV.
Configuration options: [800] - [1430]



The following items appear only when **LCLK Frequency Control** is set to **[Separate]**.

DIMM VDDQ Adjust

Adjust DIMM DQ Power Supply, stepping is 10mV. Range is from 800mV to 1430mV. Take care that during ramp down and ramp up, the VDDQ-VDD voltage must be less than 200mV, and Vpp must always be equal to or greater than VDDQ.
Configuration options: [800] - [1430]

APU VDDIO Adjust

Adjust APU VDDIO, stepping is 2mV. Range is from 700mV to 2668mV.
Configuration options: [700] - [2668]

VPP Voltage Control

VPP Ctrl

- [Auto] Use the default setting.
[Manual] Manually specify the memory VPP Voltage.



The following item appears only when **VPP Ctrl** is set to **[Manual]**.

VPP Adjust

Adjust MEM VPP, stepping is 10mV. Range is from 1500mV to 2135mV.

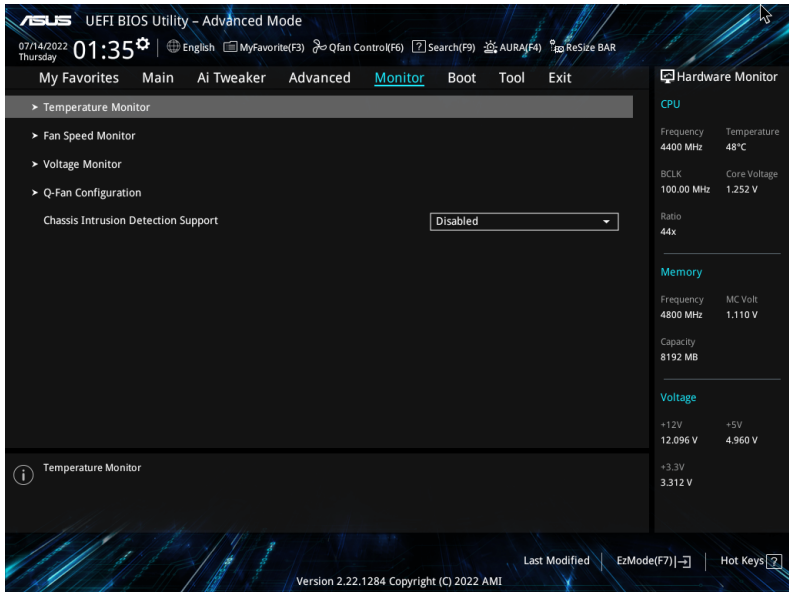
Configuration options: [1500] - [2135]

7. Monitor menu

The Monitor menu displays the system temperature/power status, and allows you to change the fan settings. Scroll down to display the other BIOS items.



The settings and options of this menu may vary depending on your motherboard. Please refer to the BIOS of your motherboard for the actual settings and options.



Temperature Monitor

CPU Temperature, CPU Package Temperature, MotherBoard Temperature, VRM Temperature, Chipset 1-2 Temperature, T_Sensor Temperature, DIMM A1-2 Temperature, DIMM B1-2 Temperature [xxx°C/xxx°F]

The onboard hardware monitor automatically detects and displays the temperatures for the different components. Select **[Ignore]** if you do not wish to display the detected temperatures.

Fan Speed Monitor

CPU Fan Speed, CPU Optional Fan Speed, Chassis Fan 1-5 Speed, AIO PUMP Speed [xxxx RPM]

The onboard hardware monitor automatically detects and displays the fan speeds in rotations per minute (RPM). If the fan is not connected to the motherboard, the field shows N/A. Select **[Ignore]** if you do not wish to display the detected speed.

Voltage Monitor

CPU Core Voltage, 12V Voltage, 5V Voltage, 3.3V Voltage, CPU VDDIO / MC Voltage [x.xxx V]

The onboard hardware monitor automatically detects the voltage output through the onboard voltage regulators. Select **[Ignore]** if you do not want to detect this item.

Q-Fan Configuration

Q-Fan Tuning

Click this item to automatically detect the lowest speed and configure the minimum duty cycle for each fan.



The process may take 2 to 5 minutes. DO NOT shut down or reset your system during the tuning process.

CPU Q-Fan Control

Allows you to set the CPU Q-Fan operating mode.

- | | |
|---------------|--------------------------------------------------------------------------------------|
| [Auto Detect] | Detects the type of installed fan/pump and automatically switches the control modes. |
| [DC Mode] | Enables the Q-Fan Control feature in DC mode for 3-pin fan/pump. |
| [PWM Mode] | Enables the Q-Fan Control feature in PWM mode for 4-pin fan/pump. |

CPU Fan Profile

Allows you to set the appropriate performance level of the assigned fan/pump. When selecting **[Manual]**, we suggest raising your fan/pump duty to 100% if your CPU temperature exceeds 75°C. Please be noted CPU performance will throttle due to overheating with inefficient fan/pump duty.

Configuration options: [Standard] [Silent] [Turbo] [Full Speed] [Manual]



The following items appear only when **CPU Fan Profile** is set to **[Standard]**, **[Silent]**, **[Turbo]**, or **[Manual]**.

CPU Fan Step Up

Step up allows you to adjust how quickly the fan rotation speed changes, with level 0 being an instantaneous change in speed. The higher the level, the slower the change in speed, and may also result in less noise, but this will also cause slower heat dissipation.

Configuration options: [Level 0] [Level 1] [Level 2] [Level 3] [Level 4] [Level 5]

CPU Fan Step Down

Step down allows you to adjust how quickly the fan rotation speed changes, with level 0 being an instantaneous change in speed. The higher the level, the slower the change in speed, which may result in longer period with more noise.

Configuration options: [Level 0] [Level 1] [Level 2] [Level 3] [Level 4] [Level 5]

CPU Fan Speed Low Limit

Allows you to set the lower speed limit for assigned fan/pump. A warning message will appear when the limit is reached; the warning message will not appear if **[Ignore]** is selected.

Configuration options: **[Ignore]** **[200 RPM]** **[300 RPM]** **[400 RPM]** **[500 RPM]** **[600 RPM]**



The following items appear only when **CPU Fan Profile** is set to **[Manual]**.

CPU Fan Point4 Temperature

When the temperature source is lower than the temperature of P4, the duty cycle will be determined according to the P3-P4 and the temperature source. When the temperature source is higher than the temperature of P4, the fan will operate at the duty cycle of P4. Use the <+> or <-> keys to adjust the Point4 temperature.

CPU Fan Point4 Duty Cycle (%)

When the temperature source is lower than the temperature of P4, the duty cycle will be determined according to the P3-P4 and the temperature source. When the temperature source is higher than the temperature of P4, the fan will operate at the duty cycle of P4. Use the <+> or <-> keys to adjust the Point4 temperature.

CPU Fan Point3 Temperature

When the temperature source is lower than the temperature of P3, the duty cycle will be determined according to the P3-P4 and the temperature source. When the temperature source is higher than the temperature of P3, the duty cycle will be determined according to the P3-P4 and the temperature source. Use the <+> or <-> keys to adjust the Point3 temperature.

CPU Fan Point3 Duty Cycle (%)

When the temperature source is lower than the temperature of P3, the duty cycle will be determined according to the P3-P4 and the temperature source. When the temperature source is higher than the temperature of P3, the duty cycle will be determined according to the P3-P4 and the temperature source. Use the <+> or <-> keys to adjust the Point3 temperature.

CPU Fan Point2 Temperature

When the temperature source is lower than the temperature of P2, the duty cycle will be determined according to the P2-P3 and the temperature source. When the temperature source is higher than the temperature of P2, the duty cycle will be determined according to the P2-P3 and the temperature source. Use the <+> or <-> keys to adjust the Point2 temperature.

CPU Fan Point2 Duty Cycle (%)

When the temperature source is lower than the temperature of P2, the duty cycle will be determined according to the P2-P3 and the temperature source. When the temperature source is higher than the temperature of P2, the duty cycle will be determined according to the P2-P3 and the temperature source. Use the <+> or <-> keys to adjust the Point2 temperature.

CPU Fan Point1 Temperature

When the temperature source is lower than the temperature of P1, the fan will operate at the duty cycle of P1. When the temperature source is higher than the temperature of P1, the duty cycle will be determined according to the P1-P2 and the temperature source. Use the <+> or <-> keys to adjust the Point1 temperature.

CPU Fan Point1 Duty Cycle (%)

When the temperature source is lower than the temperature of P1, the fan will operate at the duty cycle of P1. When the temperature source is higher than the temperature of P1, the duty cycle will be determined according to the P1-P2 and the temperature source. Use the <+> or <-> keys to adjust the Point1 temperature.

Chassis Fan(s) Configuration

Chassis Fan 1-5 Q-Fan Control

Allows you to set the Chassis Fan 1-5 operating mode.

[Auto Detect]	Detects the type of installed fan/pump and automatically switches the control modes.
[DC Mode]	Enables the Q-Fan Control feature in DC mode for 3-pin fan/pump.
[PWM Mode]	Enables the Q-Fan Control feature in PWM mode for 4-pin fan/pump.

Chassis Fan 1-5 Profile

Allows you to set the appropriate performance level of the assigned fan/pump. When selecting **[Manual]**, we suggest raising your fan/pump duty to 100% if your CPU temperature exceeds 75°C. Please be noted CPU performance will throttle due to overheating with inefficient fan/pump duty.

Configuration options: [Standard] [Silent] [Turbo] [Full Speed] [Manual]



The following items appear only when **CPU Fan 1-5 Profile** is set to **[Standard]**, **[Silent]**, **[Turbo]**, or **[Manual]**.

Chassis Fan 1-5 Q-Fan Source

The assigned fan/pump will be controlled according to the selected temperature source. Configuration options: [CPU] [MotherBoard] [VRM] [Chipset] [T_Sensor] [Multiple Sources]

Chassis Fan 1-5 Step Up

Step up allows you to adjust how quickly the fan rotation speed changes, with level 0 being an instantaneous change in speed. The higher the level, the slower the change in speed, and may also result in less noise, but this will also cause slower heat dissipation. Configuration options: [Level 0] [Level 1] [Level 2] [Level 3] [Level 4] [Level 5]

Chassis Fan 1-5 Step Down

Step down allows you to adjust how quickly the fan rotation speed changes, with level 0 being an instantaneous change in speed. The higher the level, the slower the change in speed, which may result in longer period with more noise. Configuration options: [Level 0] [Level 1] [Level 2] [Level 3] [Level 4] [Level 5]

Chassis Fan 1-5 Speed Low Limit

Allows you to set the lower speed limit for assigned fan/pump. A warning message will appear when the limit is reached; the warning message will not appear if **[Ignore]** is selected.

Configuration options: [Ignore] [200 RPM] [300 RPM] [400 RPM] [500 RPM] [600 RPM]



The following items appear only when **Chassis Fan 1-5 Profile** is set to **[Manual]**.

Chassis Fan 1-5 Point4 Temperature

When the temperature source is lower than the temperature of P4, the duty cycle will be determined according to the P3-P4 and the temperature source. When the temperature source is higher than the temperature of P4, the fan will operate at the duty cycle of P4. Use the <+> or <-> keys to adjust the Point4 temperature.

Chassis Fan 1-5 Point4 Duty Cycle (%)

When the temperature source is lower than the temperature of P4, the duty cycle will be determined according to the P3-P4 and the temperature source. When the temperature source is higher than the temperature of P4, the fan will operate at the duty cycle of P4. Use the <+> or <-> keys to adjust the Point4 temperature.

Chassis Fan 1-5 Point3 Temperature

When the temperature source is lower than the temperature of P3, the duty cycle will be determined according to the P3-P4 and the temperature source. When the temperature source is higher than the temperature of P3, the duty cycle will be determined according to the P3-P4 and the temperature source. Use the <+> or <-> keys to adjust the Point3 temperature.

Chassis Fan 1-5 Point3 Duty Cycle (%)

When the temperature source is lower than the temperature of P3, the duty cycle will be determined according to the P3-P4 and the temperature source. When the temperature source is higher than the temperature of P3, the duty cycle will be determined according to the P3-P4 and the temperature source. Use the <+> or <-> keys to adjust the Point3 temperature.

Chassis Fan 1-5 Point2 Temperature

When the temperature source is lower than the temperature of P2, the duty cycle will be determined according to the P2-P3 and the temperature source. When the temperature source is higher than the temperature of P2, the duty cycle will be determined according to the P2-P3 and the temperature source. Use the <+> or <-> keys to adjust the Point2 temperature.

Chassis Fan 1-5 Point2 Duty Cycle (%)

When the temperature source is lower than the temperature of P2, the duty cycle will be determined according to the P2-P3 and the temperature source. When the temperature source is higher than the temperature of P2, the duty cycle will be determined according to the P2-P3 and the temperature source. Use the <+> or <-> keys to adjust the Point2 temperature.

Chassis Fan 1-5 Point1 Temperature

When the temperature source is lower than the temperature of P1, the fan will operate at the duty cycle of P1. When the temperature source is higher than the temperature of P1, the duty cycle will be determined according to the P1-P2 and the temperature source. Use the <+> or <-> keys to adjust the Point1 temperature.

Chassis Fan 1-5 Point1 Duty Cycle (%)

When the temperature source is lower than the temperature of P1, the fan will operate at the duty cycle of P1. When the temperature source is higher than the temperature of P1, the duty cycle will be determined according to the P1-P2 and the temperature source. Use the <+> or <-> keys to adjust the Point1 temperature.

Allow Fan Stop

This function allows the fan to run at 0% duty cycle when the temperature of the source is dropped below the lower temperature.

Configuration options: [Disabled] [Enabled]

AIO Pump Q-Fan Control

Allows you to set the AIO Pump operating mode.

- | | |
|---------------|--------------------------------------------------------------------------------------|
| [Auto Detect] | Detects the type of installed fan/pump and automatically switches the control modes. |
| [DC Mode] | Enables the Q-Fan Control feature in DC mode for 3-pin fan/pump. |
| [PWM Mode] | Enables the Q-Fan Control feature in PWM mode for 4-pin fan/pump. |

AIO Pump Profile

Allows you to set the appropriate performance level of the assigned fan/pump. When selecting **[Manual]**, we suggest raising your fan/pump duty to 100% if your CPU temperature exceeds 75°C. Please be noted CPU performance will throttle due to overheating with inefficient fan/pump duty.

Configuration options: [Standard] [Silent] [Turbo] [Full Speed] [Manual]



The following items appear only when **AIO Pump Profile** is set to **[Standard]**, **[Silent]**, **[Turbo]**, or **[Manual]**.

AIO Pump Q-Fan Source

The assigned fan/pump will be controlled according to the selected temperature source.

Configuration options: [CPU] [MotherBoard] [VRM] [Chipset] [T_Sensor] [Multiple Sources]

AIO Pump Step Up

Step up allows you to adjust how quickly the fan rotation speed changes, with level 0 being an instantaneous change in speed. The higher the level, the slower the change in speed, and may also result in less noise, but this will also cause slower heat dissipation.

Configuration options: [Level 0] [Level 1] [Level 2] [Level 3] [Level 4] [Level 5]

AIO Pump Step Down

Step down allows you to adjust how quickly the fan rotation speed changes, with level 0 being an instantaneous change in speed. The higher the level, the slower the change in speed, which may result in longer period with more noise.

Configuration options: [Level 0] [Level 1] [Level 2] [Level 3] [Level 4] [Level 5]

AIO Pump Speed Low Limit

Allows you to set the lower speed limit for assigned fan/pump. A warning message will appear when the limit is reached; the warning message will not appear if **[Ignore]** is selected.

Configuration options: [Ignore] [200 RPM] [300 RPM] [400 RPM] [500 RPM] [600 RPM]



The following items appear only when **AIO Pump Profile** is set to **[Manual]**.

AIO Pump Point4 Temperature

When the temperature source is lower than the temperature of P4, the duty cycle will be determined according to the P3-P4 and the temperature source. When the temperature source is higher than the temperature of P4, the fan will operate at the duty cycle of P4. Use the <+> or <-> keys to adjust the Point4 temperature.

AIO Pump Point4 Duty Cycle (%)

When the temperature source is lower than the temperature of P4, the duty cycle will be determined according to the P3-P4 and the temperature source. When the temperature source is higher than the temperature of P4, the fan will operate at the duty cycle of P4. Use the <+> or <-> keys to adjust the Point4 temperature.

AIO Pump Point3 Temperature

When the temperature source is lower than the temperature of P3, the duty cycle will be determined according to the P3-P4 and the temperature source. When the temperature source is higher than the temperature of P3, the duty cycle will be determined according to the P3-P4 and the temperature source. Use the <+> or <-> keys to adjust the Point3 temperature.

AIO Pump Point3 Duty Cycle (%)

When the temperature source is lower than the temperature of P3, the duty cycle will be determined according to the P3-P4 and the temperature source. When the temperature source is higher than the temperature of P3, the duty cycle will be determined according to the P3-P4 and the temperature source. Use the <+> or <-> keys to adjust the Point3 temperature.

AIO Pump Point2 Temperature

When the temperature source is lower than the temperature of P2, the duty cycle will be determined according to the P2-P3 and the temperature source. When the temperature source is higher than the temperature of P2, the duty cycle will be determined according to the P2-P3 and the temperature source. Use the <+> or <-> keys to adjust the Point2 temperature.

AIO Pump Point2 Duty Cycle (%)

When the temperature source is lower than the temperature of P2, the duty cycle will be determined according to the P2-P3 and the temperature source. When the temperature source is higher than the temperature of P2, the duty cycle will be determined according to the P2-P3 and the temperature source. Use the <+> or <-> keys to adjust the Point2 temperature.

AIO Pump Point1 Temperature

When the temperature source is lower than the temperature of P1, the fan will operate at the duty cycle of P1. When the temperature source is higher than the temperature of P1, the duty cycle will be determined according to the P1-P2 and the temperature source. Use the <+> or <-> keys to adjust the Point1 temperature.

AIO Pump Point1 Duty Cycle (%)

When the temperature source is lower than the temperature of P1, the fan will operate at the duty cycle of P1. When the temperature source is higher than the temperature of P1, the duty cycle will be determined according to the P1-P2 and the temperature source. Use the <+> or <-> keys to adjust the Point1 temperature.

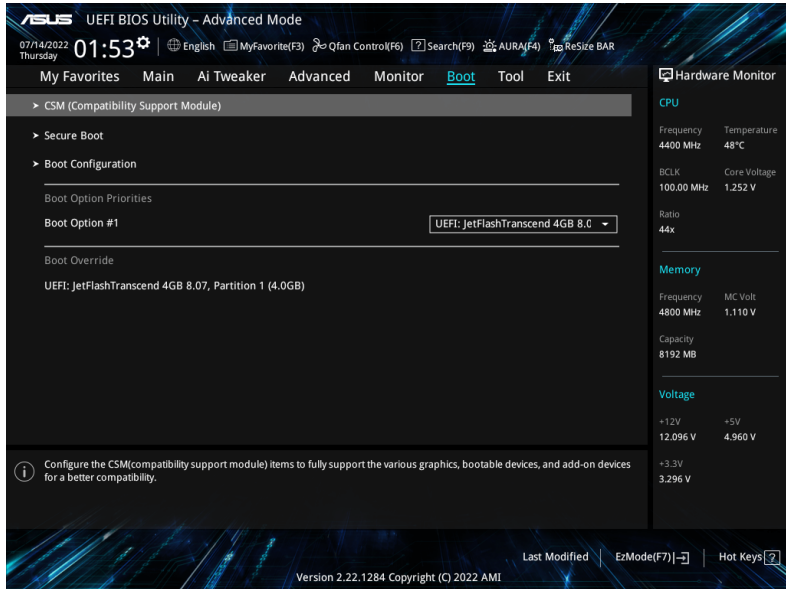
Chassis Intrusion Detection Support

Set this item to **[Enabled]** to enable the chassis intrusion detection function.

Configuration options: **[Enabled]** **[Disabled]**

8. Boot menu

The Boot menu items allow you to change the system boot options.



CSM (Compatibility Support Module)

Allows you to configure the CSM (Compatibility Support Module) items to fully support the various VGA, bootable devices and add-on devices for better compatibility.



Launch CSM will be set to **[Disabled]** and cannot be configured when using the integrated graphics.

Launch CSM

- [Enabled]** For better compatibility, enable the CSM to fully support the non-UEFI driver add-on devices or the Windows® UEFI mode.
- [Disabled]** Disable the CSM to fully support the non-UEFI driver add-on devices or the Windows® UEFI mode.



The following items appear only when **Launch CSM** is set to **[Enabled]**.

Boot Device Control

Allows you to select the type of devices that you want to boot.
Configuration options: [UEFI and Legacy OPROM] [Legacy OPROM only] [UEFI only]

Boot from Network Devices

Allows you to select the type of network devices that you want to launch.
Configuration options: [Ignore] [Legacy only] [UEFI only]

Boot from Storage Devices

Allows you to select the type of storage devices that you want to launch.

Configuration options: [Ignore] [Legacy only] [UEFI only]

Boot from PCI-E/PCI Expansion Devices

Allows you to select the type of PCI-E/PCI expansion devices that you want to launch.

Configuration options: [Ignore] [Legacy only] [UEFI only]

Secure Boot

Allows you to configure the Windows® Secure Boot settings and manage its keys to protect the system from unauthorized access and malwares during POST.

OS Type

- [Windows UEFI Mode] This item allows you to select your installed operating system. Execute the Microsoft® Secure Boot check. Only select this option when booting on Windows® UEFI mode or other Microsoft® Secure Boot compliant OS.
- [Other OS] Get the optimized function when booting on Windows® non-UEFI mode. Microsoft® Secure Boot only supports Windows® UEFI mode.



The Microsoft secure boot can only function properly on Windows UEFI mode.

Secure Boot Mode

This option allows you to select the Secure Boot mode from between Standard or Custom. In Custom mode, Secure Boot Policy variables can be configured by a physically present user without full authentication.

Configuration options: [Standard] [Custom]



The following item appears only when **Secure Boot Mode** is set to **[Custom]**.

Key Management

Install Default Secure Boot keys

Allows you to immediately load the default Security Boot keys, Platform key (PK), Key-exchange Key (KEK), Signature database (db), and Revoked Signatures (dbx). When the default Secure boot keys are loaded, the PK state will change from Unloaded mode to loaded mode.

Clear Secure Boot keys

This item appears only when you load the default Secure Boot keys. Allows you to clear all default Secure Boot keys.

Save all Secure Boot variables

Allows you to save all secure boot keys to a USB storage device.

PK Management

The Platform Key (PK) locks and secures the firmware from any permissible changes. The system verifies the PK before your system enters the OS.

Save To File

Allows you to save the PK to a USB storage device.

Set New key

Allows you to load the downloaded PK from a USB storage device.

Delete key

Allows you to delete the PK from your system. Once the PK is deleted, all the system's Secure Boot keys will not be active.

Configuration options: [Yes] [No]



The PK file must be formatted as a UEFI variable structure with time-based authenticated variable.

KEK Management

The KEK (Key-exchange Key or Key Enrollment Key) manages the Signature database (db) and Revoked Signature database (dbx).



Key-exchange Key (KEK) refers to Microsoft® Secure Boot Key-Enrollment Key (KEK).

Save to file

Allows you to save the KEK to a USB storage device.

Set New key

Allows you to load the downloaded KEK from a USB storage device.

Append Key

Allows you to load the additional KEK from a storage device for an additional db and dbx loaded management.

Delete key

Allows you to delete the KEK from your system.

Configuration options: [Yes] [No]



The KEK file must be formatted as a UEFI variable structure with time-based authenticated variable.

DB Management

The db (Authorized Signature database) lists the signers or images of UEFI applications, operating system loaders, and UEFI drivers that you can load on the single computer.

Save to file

Allows you to save the db to a USB storage device.

Set New key

Allows you to load the downloaded db from a USB storage device.

Append Key

Allows you to load the additional db from a storage device for an additional db and dbx loaded management.

Delete key

Allows you to delete the db file from your system.

Configuration options: [Yes] [No]



The db file must be formatted as a UEFI variable structure with time-based authenticated variable.

DBX Management

The dbx (Revoked Signature database) lists the forbidden images of db items that are no longer trusted and cannot be loaded.

Save to file

Allows you to save the dbx to a USB storage device.

Set New key

Allows you to load the downloaded dbx from a USB storage device.

Append Key

Allows you to load the additional dbx from a storage device for an additional db and dbx loaded management.

Delete key

Allows you to delete the dbx file from your system.

Configuration options: [Yes] [No]



The dbx file must be formatted as a UEFI variable structure with time-based authenticated variable.

Boot Configuration

Fast Boot

Allows you to enable or disable boot with initialization of a minimal set of devices required to launch active boot option. Has no effect for BBS boot options.

Configuration options: [Disabled] [Enabled]



The following item appears only when **Fast Boot** is set to **[Enabled]**.

Next Boot after AC Power Loss

[Normal Boot]

Returns to normal boot on the next boot after an AC power loss.

[Fast Boot]

Accelerates the boot speed on the next boot after an AC power loss.

Boot Logo Display

[Auto]

Automatically adjust the boot logo size for Windows requirements.

[Full Screen]

Maximize the boot logo size.

[Disabled]

Hide the logo during POST.



The following item appears only when **Boot Logo Display** is set to **[Auto]** or **[Full Screen]**.

Post Delay Time

Allows you to select a desired additional POST waiting time to easily enter the BIOS Setup. You can only execute the POST delay time during normal boot.

Configuration options: [0 sec] - [10 sec]



This feature only works when set under normal boot.



The following item appears only when **Boot Logo Display** is set to **[Disabled]**.

Post Report

Allows you to select a desired POST report waiting time or until ESC is pressed.
Configuration options: [1 sec] - [10 sec] [Until Press ESC]

Boot up NumLock State

Allows you to select the keyboard NumLock state.
Configuration options: [On] [Off]

Wait For 'F1' If Error

Allows your system to wait for the <F1> key to be pressed when error occurs.
Configuration options: [Disabled] [Enabled]

Option ROM Messages

[Force BIOS] The Option ROM Messages will be shown during the POST.
[Keep Current] Only the ASUS logo will be shown during the POST.

Interrupt 19 Capture

Enable this item to allow the option ROMs to trap the interrupt 19.
Configuration options: [Enabled] [Disabled]

AMI Native NVMe Driver Support

Allows you to enable or disable AMI Native NVMe driver.
Configuration options: [Disabled] [Enabled]

Setup Mode

[Advanced Mode] This item allows you to go to Advanced Mode of the BIOS after POST.
[EZ Mode] This item allows you to go to EZ Mode of the BIOS after POST.

Boot Option Priorities

These items specify the boot device priority sequence from the available devices. The number of device items that appears on the screen depends on the number of devices installed in the system.



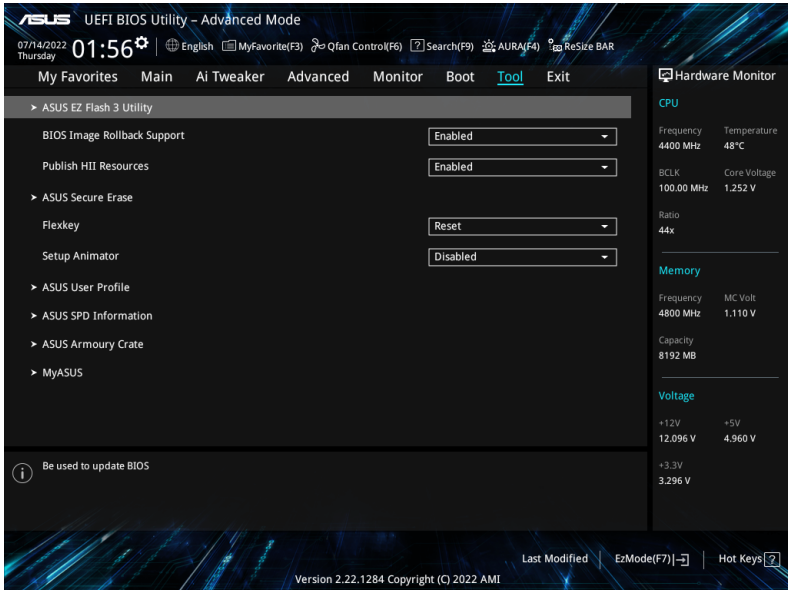
- To access Windows® OS in Safe Mode, press <F8 > after POST (Windows® 8 not supported).
 - To select the boot device during system startup, press <F8> when ASUS Logo appears.
-

Boot Override

These item displays the available devices. The number of device items that appear on the screen depends on the number of devices installed in the system. Click an item to start booting from the selected device.

9. Tool menu

The Tool menu items allow you to configure options for special functions. Select an item then press <Enter> to display the submenu.



BIOS Image Rollback Support

[Enabled] Support roll back your BIOS to a previous version, but this setting violates the NIST SP 800-147 requirement.

[Disabled] Only support updating your BIOS to a newer version, and this setting meets the NIST SP 800-147 requirement.

Publish HII Resources

Configuration options: [Disabled] [Enabled]

Flexkey

[Reset] Reboots the system.

[Aura On/Off] Enable or Disable Aura LEDs. This setting does not sync with the BIOS/software option.

[DirectKey] Boot directly into the BIOS.

Setup Animator

Allows you to enable or disable the Setup animator.

Configuration options: [Disabled] [Enabled]

9.1 ASUS EZ Flash 3 Utility

This item allows you to run ASUS EZ Flash 3. When you press <Enter>, a confirmation message appears. Use the left/right arrow key to select between [Yes] or [No], then press <Enter> to confirm your choice.



For more details, refer to section **ASUS EZ Flash 3**.

9.2 ASUS Secure Erase

SSD speeds may lower over time as with any storage medium due to data processing. Secure Erase completely and safely cleans your SSD, restoring it to factory performance levels.

To launch Secure Erase, click **Tool > ASUS Secure Erase** on the Advanced mode menu.



- The time to erase the contents of your SSD may take a while depending on its size. Do not turn off the system during the process.
 - Secure Erase is only supported on Intel SATA port. For more information about Intel SATA ports, refer to section **Motherboard layout** in your user manual.
-

Displays the available SSDs

Port #	SSD Name	Status	Total Capacity
P4	ADATA S590 Turbo	Ready	64,000B

SSD speed performance may degrade over time due to accumulated files and frequent data-writing. Secure Erase completely restores your SSD and restores it to the factory settings.
WARNING: Ensure that you run Secure Erase on a compatible SSD. Running Secure Erase on an incompatible SSD will render the SSD totally unusable.
NOTE: Not all BIOS Secure Erase compatible SSDs, visit the ASUS Support Page at www.asus.com/support

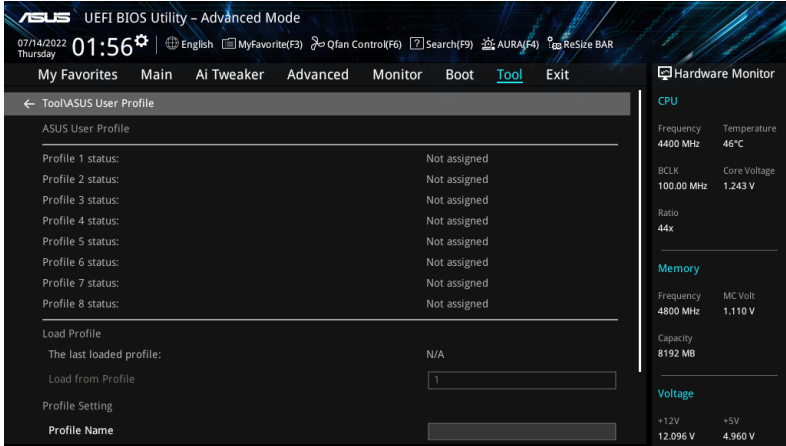


Status definition:

- **Frozen.** The frozen state is the result of a BIOS protective measure. The BIOS guards drives that do not have password protection by freezing them prior to booting. If the drive is frozen, a power off or hard reset of your PC must be performed to proceed with the Secure Erase.
 - **Locked.** SSDs might be locked if the Secure Erase process is either incomplete or was stopped. This may be due to a third party software that uses a different password defined by ASUS. You have to unlock the SSD in the software before proceeding with Secure Erase.
-

9.3 ASUS User Profile

This item allows you to store or load multiple BIOS settings.



Load from Profile

Allows you to load the previous BIOS settings saved in the BIOS Flash. Key in the profile number that saved your BIOS settings, press <Enter>, and then select **Yes**.



- DO NOT shut down or reset the system while updating the BIOS to prevent the system boot failure!
- We recommend that you update the BIOS file only coming from the same memory/ CPU configuration and BIOS version.

Profile Name

Allows you to key in a profile name.

Save to Profile

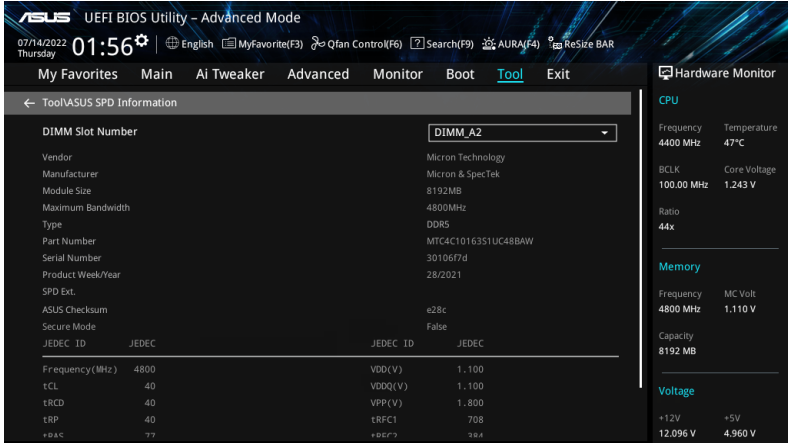
Allows you to save the current BIOS settings to the BIOS Flash, and create a profile. Key in a profile number from one to eight, press <Enter>, and then select **Yes**.

Load/Save Profile from/to USB Drive

Allows you to load or save profile from your USB drive, load and save profile to your USB drive.

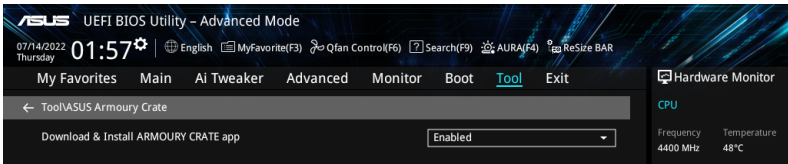
9.4 ASUS SPD Information

This item allows you to view the DRAM SPD information.



9.5 ASUS Armoury Crate

This item allows you to enable or disable downloading and installing of the Armoury Crate app in the Windows® OS. The Armoury Crate app can help you manage and download the latest drivers and utilities for your motherboard.



Download & Install ARMOURY CRATE app

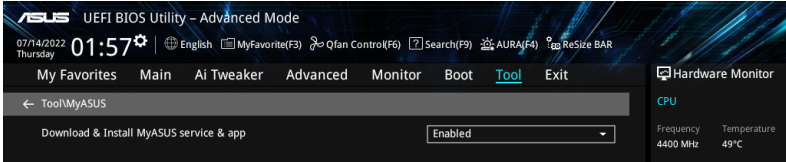
Configuration options: [Disabled] [Enabled]

9.6 MyASUS

This item allows you to enable or disable downloading and installing of the MyASUS app in the Windows® OS.



The availability of this menu, as well as the settings and options may vary depending on your motherboard. Please refer to the BIOS of your motherboard for the actual settings and options.

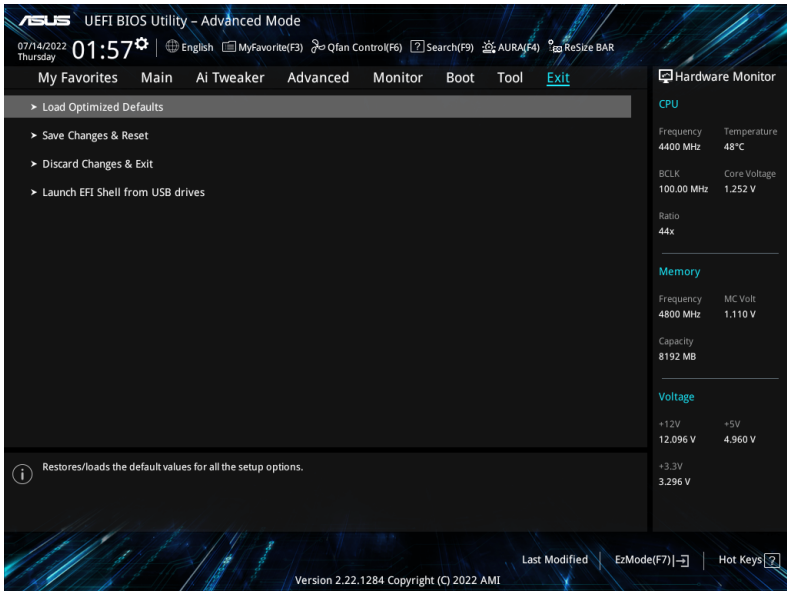


Download & Install MyASUS service & app

Configuration options: [Disabled] [Enabled]

10. Exit menu

The Exit menu items allow you to load the optimal default values for the BIOS items, and save or discard your changes to the BIOS items. You can access the EZ Mode from the Exit menu.



Load Optimized Defaults

This option allows you to load the default values for each of the parameters on the Setup menus. When you select this option or if you press <F5>, a confirmation window appears. Select **OK** to load the default values.

Save Changes & Reset

Once you are finished making your selections, choose this option from the Exit menu to ensure the values you selected are saved. When you select this option or if you press <F10>, a confirmation window appears. Select **OK** to save changes and exit.

Discard Changes & Exit

This option allows you to exit the Setup program without saving your changes. When you select this option or if you press <Esc>, a confirmation window appears. Select **Yes** to discard changes and exit.

Launch EFI Shell from USB drives

This option allows you to attempt to launch the EFI Shell application (shellx64.efi) from one of the available filesystem devices.

11. Updating BIOS

The ASUS website publishes the latest BIOS versions to provide enhancements on system stability, compatibility, and performance. However, BIOS updating is potentially risky. If there is no problem using the current version of BIOS, DO NOT manually update the BIOS. Inappropriate BIOS updating may result to system's failure to boot. Carefully follow the instructions in this chapter to update your BIOS when necessary.



Visit <http://www.asus.com> to download the latest BIOS file for this motherboard.

The following utilities allow you to manage and update the motherboard BIOS setup program.

1. ASUS EZ Flash 3: Updates the BIOS using a USB flash drive.
2. ASUS CrashFree BIOS 3: Restores the BIOS using a USB flash drive when the BIOS file fails or gets corrupted.

11.1 ASUS EZ Flash 3

ASUS EZ Flash 3 allows you to download and update to the latest BIOS using a USB drive.

To update the BIOS:

1. Insert the USB flash drive that contains the latest BIOS file to a USB port.
2. Enter the Advanced Mode of the BIOS setup program. Go to the **Tool** menu to select **ASUS EZ Flash 3 Utility** and press <Enter>.
3. Press Left arrow key to switch to the Drive field.
4. Press the Up/Down arrow keys to find the USB flash drive that contains the latest BIOS, and then press <Enter>.
5. Press Right arrow key to switch to the Folder Info field.
6. Press the Up/Down arrow keys to find the BIOS file, and then press <Enter> to perform the BIOS update process. Reboot the system when the update process is done.



11.2 ASUS CrashFree BIOS 3

The ASUS CrashFree BIOS 3 utility is an auto recovery tool that allows you to restore the BIOS file when it fails or gets corrupted during the updating process. You can restore a corrupted BIOS file using a USB flash drive that contains the BIOS file.



Make sure to download the latest BIOS file at <https://www.asus.com/support/> and save it to a USB flash drive.

Recovering the BIOS

To recover the BIOS:

1. Turn on the system.
2. Insert the USB flash drive containing the BIOS file to the USB port.
3. The utility automatically checks the devices for the BIOS file. When found, the utility reads the BIOS file and enters ASUS EZ Flash 3 automatically.
4. The system requires you to enter BIOS Setup to recover the BIOS setting. To ensure system compatibility and stability, we recommend that you press <F5> to load default BIOS values.



DO NOT shut down or reset the system while updating the BIOS! Doing so can cause system boot failure!
