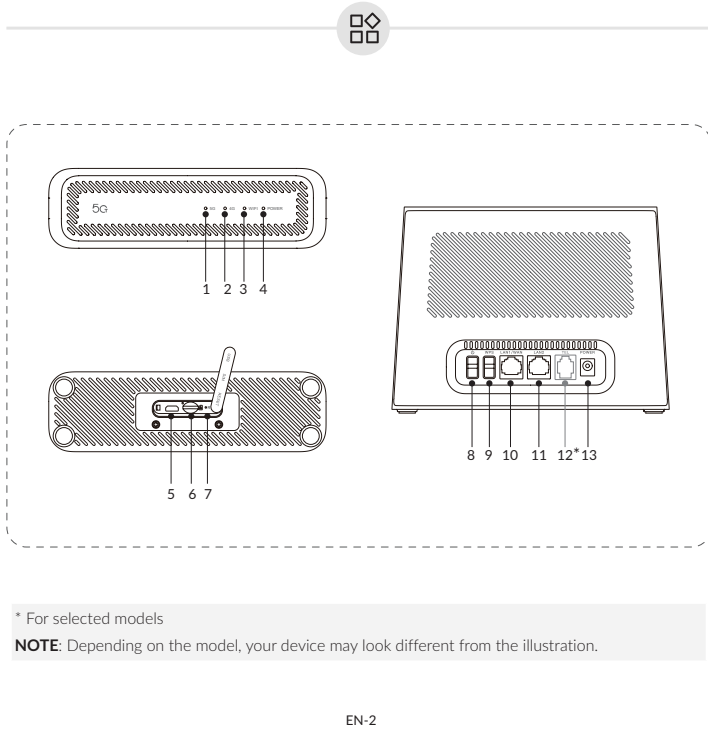


Quick Start Guide



* For selected models
NOTE: Depending on the model, your device may look different from the illustration.

Average active efficiency: 85%
 No-load power consumption: < 0.1 W

Radio Equipment Directive Declaration of Conformity

Hereby, TCL Communication Ltd. declares that the radio equipment of type TCL HH512LV/HH512LM is in compliance with Directive 2014/53/EU. The full text of the EU declaration of conformity is available at the following internet address: https://www.tcl.com/global/en/EC_DOC.

Radio waves

This device meets international guidelines for exposure to radio waves. For more information, you can go to tcl.com.

Frequency bands and maximum radio-frequency power

- This radio equipment operates with the following frequency bands and maximum radio-frequency power:
- LTE FDD B1/3 (2100/1800MHz): 23.5 dBm
- LTE FDD B7/B28 (2600/700MHz): 23.0 dBm
- LTE FDD B8 (900MHz): 24.0 dBm
- LTE FDD B20 (800MHz): 25.0 dBm
- LTE TDD B38 (2600MHz): 24.0 dBm
- LTE TDD B40/B42/B43 (2300/3500/3700MHz): 23.0 dBm
- UL CA Combination: 25.5 dBm
- 5G NR FDD n1/n3 (2100/1800MHz): 23.5 dBm
- 5G NR FDD n7/n8/n28 (2600/900/700MHz): 24.5 dBm
- 5G NR FDD n20 (800MHz): 24.0 dBm
- 5G NR TDD n38/n40 (2600/2300MHz): 24.0 dBm
- 5G NR TDD n41/n77/n78 (2500/3700/3500MHz): 27.0 dBm

EN-DC Combination: 26.0 dBm
 802.11 b/g/n/ax 2.4GHz band: 18.86 dBm
 802.11 a/n/ac/ax 5150 – 5350 MHz: 17.00 dBm
 802.11 a/n/ac/ax 5470 – 5725 MHz: 19.82 dBm
 802.11 a/n/ac/ax 5725 – 5875 MHz: 10.88 dBm
 802.11 a/ax 5945 – 6425 MHz: 18.16 dBm

Restrictions:
 This equipment may be operated in all European countries. The 5150-5250 MHz* of Wi-Fi 5GHz can be used inside buildings and outdoors only when the equipment is not attached to a fixed installation or to the external body of road vehicles, a fixed infrastructure or a fixed outdoor antenna. The 5250-5350 MHz* of Wi-Fi 5GHz can be used inside buildings only. The 5470-5725 MHz* band of Wi-Fi 5GHz can't be used in road vehicles, trains, aircraft or UAS (Unmanned Aircraft System) scenarios for the following countries:

BE	BG	CZ	DK	DE	EE	IE	EL	ES
FR	HR	IT	CY	LV	LT	LU	HU	MT
NL	AT	PL	PT	RO	SI	SK	FI	SE
NO	IS	LI	CH	TR	UK (NI)			

Third countries								
UK								

This radio equipment is also subject to certain restrictions when it is placed on the market in United Kingdom (UK):
 In accordance with the relevant statutory requirements in the UK, the 5150 to 5350 MHz frequency range is restricted to indoor use in the United Kingdom.

¹ Depending on the device you purchased.

1. 5G network indicator	<ul style="list-style-type: none"> Solid blue: The signal is good. Solid yellow: The signal is weak. Off: The 5G network is not working.
2. 4G network indicator	<ul style="list-style-type: none"> Solid blue: The signal is good. Solid yellow: The signal is weak. Off: The 4G network is not working.
3. Wi-Fi/WPS indicator	<ul style="list-style-type: none"> Solid blue: Wi-Fi is enabled. Blinking blue: WPS connection is available. Off: Wi-Fi is disabled.
4. Power indicator	<ul style="list-style-type: none"> Solid blue: The device is powered on. Blinking blue: The device is performing firmware update via FOTA. Off: The device is powered off.
5. Micro USB port	Dedicated port for debugging.
6. Nano SIM card slot	Insert a nano SIM card in the slot.
7. Reset button	Use a paperclip to press the button for 3 seconds to reset the device.
8. Power button	<ul style="list-style-type: none"> Press for 3 seconds to power off your device. Press for 1 second to power on your device.
9. WPS button	Press the button for 3 seconds to enable the WPS function. The WPS function will be automatically disabled if a WPS connection is not established within 2 minutes.
10. WAN/LAN port	Used to connect to an internet source or wired devices such as computers or switches.
11. LAN port	Used to connect to wired devices such as computers or switches.
12. Telephone port* (for HH512LV only)	Connect a telephone to make or answer calls.
13. Power connector	Used to connect to the power adapter.

Licences

Wi-Fi Alliance certificated

Waste disposal and recycling

Your device, accessory and removable battery must be disposed of in accordance with locally applicable environmental regulations.

This symbol on your device, the battery, and the accessories means that these products must be taken to:

- Municipal waste disposal centres with specific bins.
- Collection bins at points of sale.

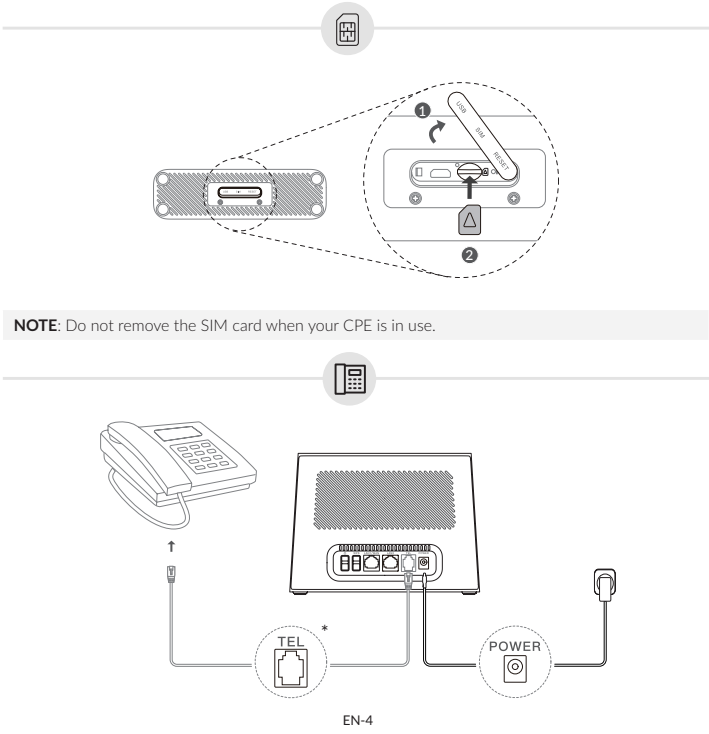
They will then be recycled, preventing substances being disposed of in the environment.

In European Union countries: These collection points are accessible free of charge. All products with this sign must be brought to these collection points.

In non-European Union jurisdictions: Items of equipment with this symbol are not to be thrown into ordinary bins if your jurisdiction or your region has suitable recycling and collection facilities; instead they are to be taken to collection points for them to be recycled.

General information

- **Internet address:** tcl.com
- **Service Hotline and Repair Center:** Go to our website www.tcl.com/global/en/service-support-mobile/hotline&service-center.html.
- **Full User Manual:** Check the Help section on the login website to download the full user manual of your device.
- **Manufacturer:** TCL Communication Ltd.
- **Address:** 5/F, Building 22E, 22 Science Park East Avenue, Hong Kong Science Park, Shatin, NT, Hong Kong



Limited warranty

- Additional Rights Under Consumer Laws

As the consumer You may have legal (statutory) rights that are in addition to those set out in this Limited Warranty offered by Manufacturer voluntarily, such as the consumer laws of the country in which You live ("Consumer Rights"). This Limited Warranty sets out certain situations when the Manufacturer will, or will not, provide a remedy for the TCL device. This Limited Warranty does not limit or exclude any of your Consumer Rights relating to the TCL device.

- Manufacturer Warranty Coverage

This Manufacturer's Limited Warranty sets forth the warranty responsibilities of the Manufacturer regarding TCL branded hardware and accessories manufactured by or on behalf of the Manufacturer.

The Manufacturer warrants to the original end-user purchaser of a new TCL device ("You"), that the TCL device will be free from defects in materials and workmanship under normal use from a period that commences on the date of original purchase by You and continuing for the following specified period of time for each applicable type of TCL device (the "Warranty period").

This Limited Warranty is not transferable by You.

The applicable Warranty period is listed below:

TCL device & Embedded battery	12 months ⁽¹⁾
TCL accessories: USB cable, Adapter ⁽²⁾	3 months ⁽¹⁾

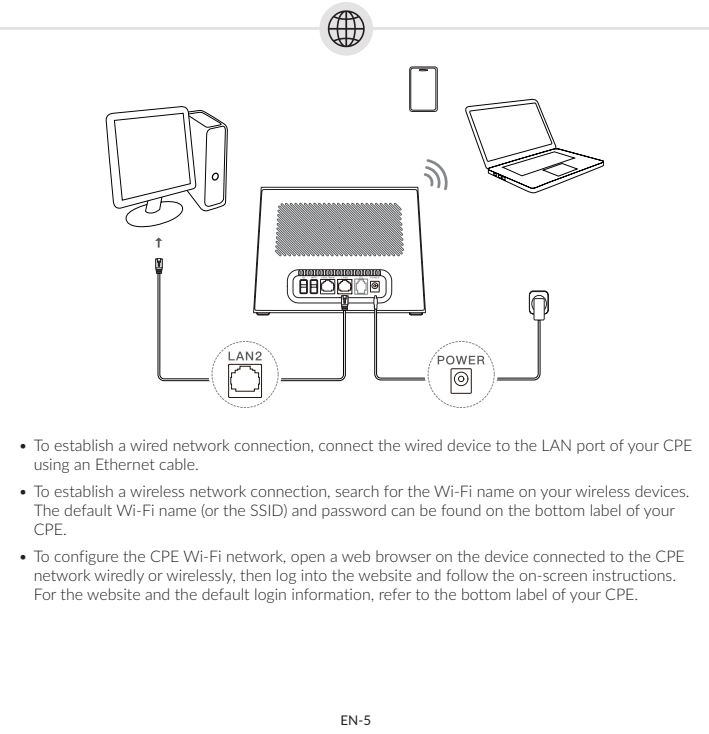
In case of any defect of your device which prevents you from normal use thereof, you must immediately inform your vendor and present your device with your proof of purchase.

If the defect is confirmed by the Manufacturer or its authorised service providers, your device or part thereof will be either repaired or replaced, as appropriate. Repair or replacement may be carried out using reconditioned components offering equivalent functionality.

This warranty covers the costs of repair or replacement (labour and spare parts) but excludes any other costs.

This warranty shall not apply to defects on your device and/or accessory due to (without any limitation),

⁽¹⁾ The Warranty period may vary depending on your country of purchase and/or channel of purchase.
⁽²⁾ If included.



Adapters

Mains powered adapters will operate within the temperature range of: 0°C (32°F) to 45°C (113°F).

The adapters designed for your device meet the standard for safety of information technology equipment and office equipment use. They are also compliant with the ecodesign directive 2009/125/EC. Due to different applicable electrical specifications, an adapter you purchased in one jurisdiction may not work in another jurisdiction. They should be used for the purpose of charging only.

Model: CYCA18-120150E/CYCA18-120150UK/S018BAV1200150
 Input Voltage: 100-240 V
 Input AC Frequency: 50/60 Hz
 Output Voltage: 12 V
 Output Current: 1.5 A
 Output Power: 18 W

- non-compliance use with the instructions for use or installation, or with technical and safety standards applicable in the geographical area where your device is used;

- connection to any equipment not supplied or not recommended by the Manufacturer;

- repair performed by individuals not authorised by the Manufacturer or its affiliates;

- modification, adjustment or alteration of software or hardware performed by individuals not authorised by the Manufacturer;

- inclement weather, lightning, fire, humidity, infiltration of liquids or foods, chemical products, intrusion or download of malicious files/software (malware), crash, high voltage, corrosion, oxidation.

In no event shall the Manufacturer or any of its affiliates be liable for indirect, incidental or consequential damages of any nature whatsoever, including but not limited to commercial or financial loss or damage, loss of data or loss of image to the full extent those damages can be disclaimed by law.

Some countries/states do not allow the exclusion or limitation of indirect, incidental or consequential damages, or limitation of the duration of implied warranties, so the preceding limitations or exclusions may not apply to You.

If your TCL device is returned during the Warranty period, but your TCL device is not covered under this limited warranty, terms and charges may apply for any repair or processing performed.

If you do not live in the country where the TCL device was originally sold to you then,

(a) warranty repair or service may not be possible;

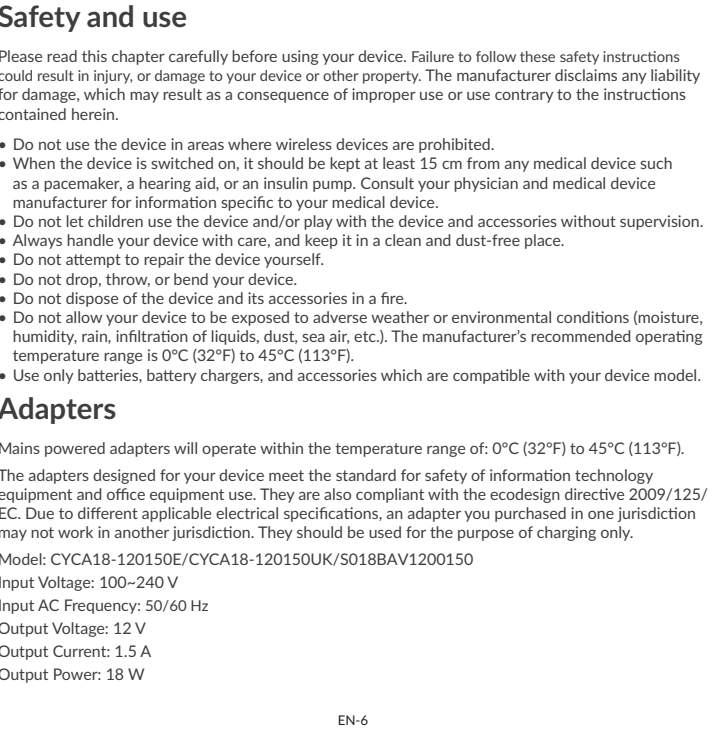
(b) you may be required to agree to terms and/or to pay certain costs (including but not limited to, shipping and handling costs);

(c) the warranty repair or service, if possible, may take longer than normal to complete.

- Back Up Your Data

You should regularly backup your data, files, applications and settings as a safeguard against possible operational issues including prior to the return of the TCL device. Data backup is your responsibility and is not the responsibility of the Manufacturer, the retailer through whom You purchased the TCL device, or the Manufacturer's authorised service providers through whom You may have received servicing, (repair or replacement of the TCL device).

If you need to send/leave your TCL device for servicing, we recommend you to remove from your device any peripherals (memory card, SIM card) and personal and confidential data before sending/leaving your TCL device.



Précautions d'emploi

Veuillez lire attentivement ce chapitre avant d'utiliser votre appareil. Le non-respect de ces consignes de sécurité peut entraîner des blessures ou des dommages à votre appareil ou à d'autres biens. Le fabricant ne pourra être tenu responsable des conséquences résultant d'une utilisation impropre et/ou non conforme aux instructions contenues dans le manuel.

- N'utilisez pas l'appareil dans des zones où les appareils sans fil sont interdits.
- Lorsque l'appareil est sous tension, veillez à ce qu'il ne se trouve jamais à moins de 15 centimètres d'un appareil médical (stimulateur cardiaque, assistance auditive ou pompe à insuline etc. Consultez votre médecin et le fabricant du dispositif médical pour obtenir des informations spécifiques à votre dispositif médical.
- Ne laissez pas les enfants utiliser l'appareil et / ou jouer avec l'appareil et ses accessoires sans surveillance.
- Manipulez votre appareil avec soin et conservez-le dans un endroit propre et à l'abri de la poussière.
- N'essayez pas de réparer vous-même l'appareil.
- Évitez de faire tomber, de jeter ou de plier votre appareil.
- Ne jetez pas l'appareil et ses accessoires au feu.
- N'exposez pas votre appareil à des conditions météorologiques défavorables, telles que la moisissure, l'humidité, la pluie, l'infiltration de liquides, la poussière, l'air marin, etc. La plage de températures de fonctionnement recommandée par le fabricant est de 0 °C (32 °F) à 45 °C (113 °F).
- N'utilisez que des batteries, des chargeurs de batterie et des accessoires compatibles avec votre modèle d'appareil.

Adaptateurs

Les adaptateurs alimentés par secteur sont prévus pour fonctionner à une température ambiante de 0 (32 °F) à 45 °C (113 °F).

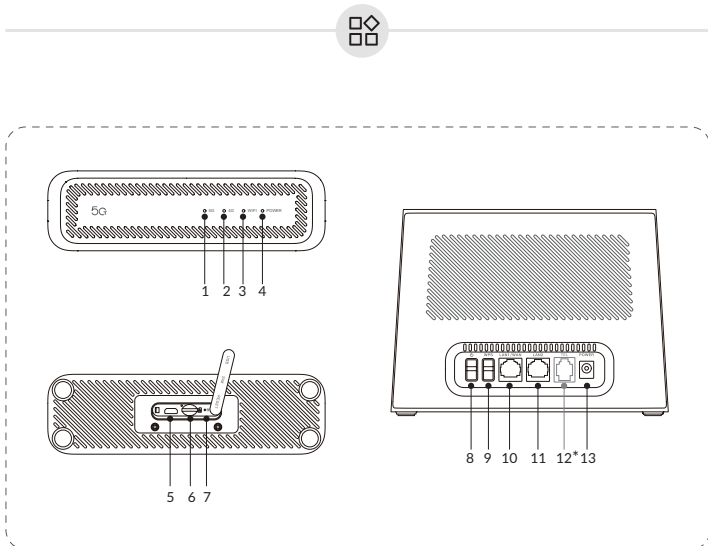
Les adaptateurs conçus pour votre appareil sont conformes à la norme de sécurité d'utilisation des équipements informatiques et bureautiques. Ils sont également conformes à la directive sur l'écoconception 2009/125/CE. En raison des différentes spécifications électriques applicables, un adaptateur que vous avez acheté dans une région peut ne pas fonctionner dans une autre région. Ils doivent être utilisés uniquement à des fins de rechargement.

Modèle : CYCA18-120150E/CYCA18-120150UK/S018BAV1200150

Tension en entrée : 100-240 V

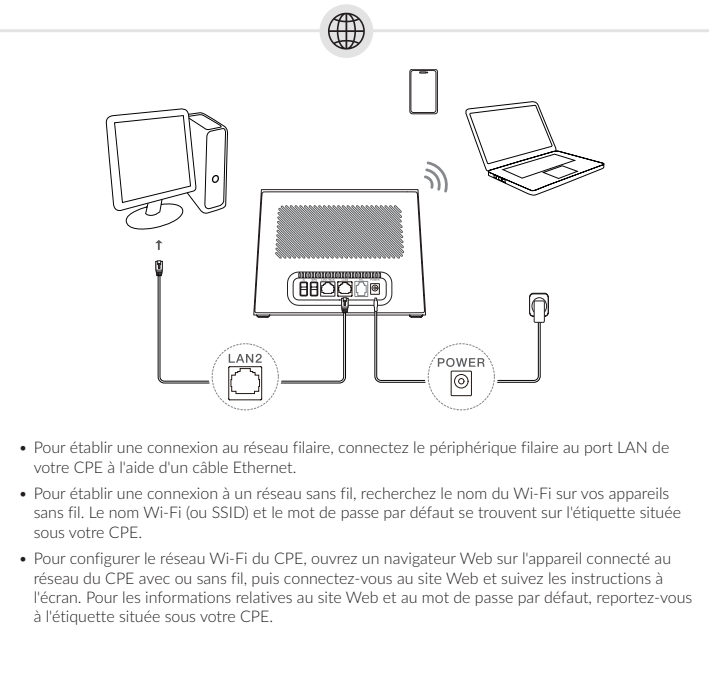
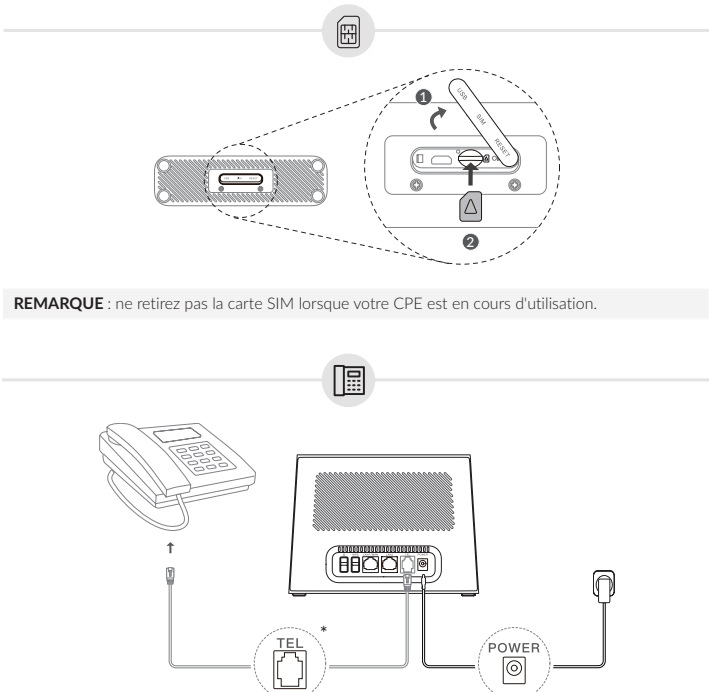
Fréquence en entrée CA : 50/60 Hz

Guide d'utilisation rapide



* Pour les modèles sélectionnés
REMARQUE : en fonction du modèle, votre appareil peut être différent de celui présenté dans l'illustration.

1. Indicateur de réseau 5G	<ul style="list-style-type: none"> Bleu fixe : le signal est bon. Jaune fixe : le signal est faible. Éteint : le réseau 5G n'est pas opérationnel.
2. Indicateur de réseau 4G	<ul style="list-style-type: none"> Bleu fixe : le signal est bon. Jaune fixe : le signal est faible. Éteint : le réseau 4G n'est pas opérationnel.
3. Témoin Wi-Fi/WPS	<ul style="list-style-type: none"> Bleu fixe : le Wi-Fi est activé. Bleu clignotant : une connexion WPS est disponible. Éteint (Off) : le Wi-Fi est désactivé.
4. Indicateur d'alimentation	<ul style="list-style-type: none"> Bleu fixe : l'appareil est sous tension. Bleu clignotant : l'appareil effectue une mise à jour du firmware via FOTA. Éteint : l'appareil est hors service.
5. Port Micro-USB	Port dédié au débogage.
6. Logement pour carte nano-SIM	Insérez une carte nano SIM dans l'emplacement.
7. Bouton de réinitialisation	Utilisez un trombone pour appuyer sur le bouton pendant 3 secondes afin de réinitialiser l'appareil.
8. Bouton d'alimentation	<ul style="list-style-type: none"> Appuyez pendant 3 secondes pour éteindre votre appareil. Appuyez pendant 1 seconde pour allumer votre appareil.
9. Bouton WPS	Maintenez le bouton enfoncé pendant 3 secondes pour activer la fonction WPS. La fonction WPS sera automatiquement désactivée si une connexion WPS n'est pas établie dans les 2 minutes.
10. Port WAN/LAN	Connexion à une source internet ou à des appareils câblés tels que des ordinateurs ou des commutateurs.
11. Port LAN	Connexion à des dispositifs câblés tels que des ordinateurs ou des commutateurs.
12. Port téléphonique* (uniquement pour HH512LV)	Connexion d'un téléphone pour émettre ou recevoir des appels.
13. Connecteur d'alimentation	Alimentation au réseau électrique.



• Pour établir une connexion au réseau filaire, connectez le périphérique filaire au port LAN de votre CPE à l'aide d'un câble Ethernet.

• Pour établir une connexion à un réseau sans fil, recherchez le nom du Wi-Fi sur vos appareils sans fil. Le nom Wi-Fi (ou SSID) et le mot de passe par défaut se trouvent sur l'étiquette située sous votre CPE.

• Pour configurer le réseau Wi-Fi du CPE, ouvrez un navigateur Web sur l'appareil connecté au réseau du CPE avec ou sans fil, puis connectez-vous au site Web et suivez les instructions à l'écran. Pour les informations relatives au site Web et au mot de passe par défaut, reportez-vous à l'étiquette située sous votre CPE.

