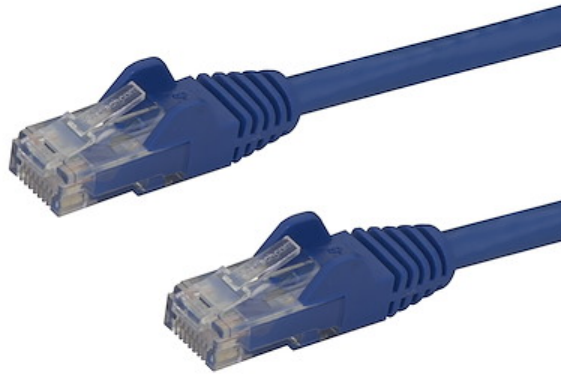


3m CAT6 Ethernet Cable - Blue CAT 6 Gigabit Ethernet Wire -650MHz 100W PoE RJ45 UTP Network/Patch Cord Snagless w/Strain Relief Fluke Tested/Wiring is UL Certified/TIA

**Product ID:** N6PATC3MBL



The N6PATC3MBL Cat 6 Patch Cable (3m) meets or exceeds all Category 6 cable specifications to ensure reliable Gigabit network connections, and features a durable blue PVC jacket that enables you to color code your network cable runs as needed.

To ensure long-lasting performance, this high quality Cat 6 patch cable features a snagless design that protects the RJ45 connector clips from damage and makes the cable less prone to snagging during installation. The cable also features molded PVC strain relief that prevents the RJ45 connector termination points from bending at sharp angles - reducing the risk of cable damage, which could decrease network performance.

Constructed of only top quality materials, this Cat 6 Patch Cord delivers reliable performance and is backed by our Lifetime Warranty.

StarTech.com Cat6 cables are manufactured using high-quality copper conductors. While many cable manufacturers offer a "cheaper" cable based on a copper-coated aluminum core, we make no compromises on quality to ensure you receive top value and performance for your network cable investment.

This Cat6 cable is constructed with 24 gauge copper wire, to support a broad range of Ethernet applications such as Power over Ethernet (PoE). Because we use a high quality copper wire, our cables easily sustain the power required for Power over Ethernet applications, whereas the inferior quality offered by copper-coated aluminum cables may be subject to insufficient power delivery, heat buildup, equipment damage and potentially, fire.

This Cat 6 patch cable offers high quality connectors comprised of 50-micron gold, to deliver optimum conductivity while eliminating signal loss due to oxidation or corrosion.

## Certifications, Reports and Compatibility

## Applications

- Designed for use with Gigabit networks
- Patches from hub to distribution panel
- Connects workstation to wall outlet

## Features

- RJ45 connector clip protectors
- High quality 24 AWG copper wire
- HIGH PERFORMANCE CAT6 ETHERNET CABLE: 100% copper for error-free Multi Gigabit 1/2.5/5Gbps connections; 10Gbps up to 50m; Fluke patch cord tested to comply w/ANSI/TIA-568-2.D Category 6 & ETL Verified
- POE SUPPORT: 24 AWG stranded copper conductors & UL Rated Wiring (E132276-A) supports up to 100W for PoE devices like VOIP phone & security systems; IEEE 802.3bt & DTE power compliance reduces cable heating
- QUALITY CONSTRUCTION: ETL & UL certified wire; 50-micron gold-plated connectors prevent rust/corrosion to avoid costly network downtime; High quality PVC jacket resists bending or fraying damage
- EASY INSTALLATION: Snagless patch cord for easy installation & flexible disconnection in wiring conduits; Compatible w/Cat5e & earlier standards; Molded boots available for constrained spaces
- SPECS: Length: 3m (10ft) Color: Blue 650 MHz Rated Structure: 4 Pair UTP RJ45 Jacket: PVC Wire Gauge: 24 AWG Copper Wiring: ANSI/T568B ETL Verified Warranty: Lifetime

---

### Prominence

Warranty	Lifetime
Description CDW 75 - 1st Line	StarTech.com CAT6 Ethernet Cable 3m Blue 650MHz 100W Snagless Patch Cord

---

### Hardware

Number of Conductors	4 pair UTP
Connector Plating	Gold
Cable Jacket Material	PVC - Polyvinyl Chloride
Fire Rating	CMG Rated (General Purpose)
Cable Type	Snagless
Wiring Standard	TIA/EIA-568-B.1-2001 T568B

---

### Performance

Cable Rating	CAT6 - 650 MHz
--------------	----------------

---

**Connector(s)**

Connector A	RJ-45
Connector B	RJ-45

---

**Physical Characteristics**

Color	Blue
Wire Gauge	24 AWG
Conductor Type	Stranded Copper
Cable Length	9.8 ft [3 m]
Product Length	9.8 ft [3 m]
Weight of Product	4.4 oz [126 g]

---

**Packaging Information**

Package Quantity	1
Package Length	8.7 in [22 cm]
Package Width	7.9 in [20 cm]
Package Height	0.8 in [20 mm]
Shipping (Package) Weight	4.8 oz [136 g]

---

**What's in the Box**

Included in Package	3 m Blue Snagless Cat6 UTP Patch Cable - ETL Verified
---------------------	---

---

***\*Product appearance and specifications are subject to change without notice.***

