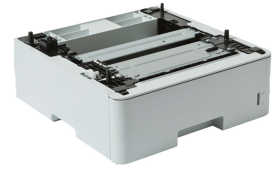


Brother LT-6505 tray/feeder Auto document feeder (ADF) 520 sheets

Brand : Brother

Product code: LT-6505

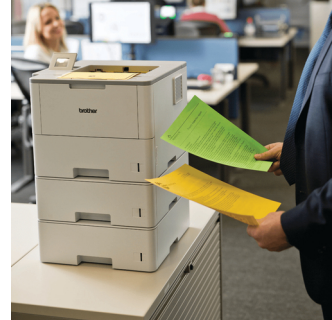
Product name : LT-6505



- Optional Lower Paper Tray
- 520-sheet capacity

Optional Lower Paper Tray (520 sheet capacity)

Brother LT-6505. Type: Auto document feeder (ADF), Brand compatibility: Brother, Compatibility: HL-L6400DW. Width: 363 mm, Depth: 383 mm, Height: 152 mm



Features

Type *	Auto document feeder (ADF)
Brand compatibility *	Brother
Compatibility *	HL-L6400DW
Maximum capacity	520 sheets
Product colour	Grey

Weight & dimensions

Width	363 mm
Depth	383 mm
Height	152 mm
Weight	31.1 kg

Logistics data

Harmonized System (HS) code	84439990
-----------------------------	----------



4977766755566



0012502642909



012502642909

Disclaimer. The information published here (the "Information") is based on sources that can be considered reliable, typically the manufacturer, but this Information is provided "AS IS" and without guarantee of correctness or completeness. The Information is only indicative and can be changed at any time without notification. No rights can be based on the Information. Suppliers or aggregators of this Information do not accept any liability with regard to the content of (web)pages and other documents, including its Information. The publisher of the Information can not be held liable for the content of 3rd party websites that are linking this Information or are linked to from this Information. You as the User of the Information are solely responsible for the choice and usage of this Information. You are not entitled to transfer, copy or otherwise multiply or distribute the Information. You are obliged to follow the directions of the copyright owner(s) with regard to the use of the Information. Exclusively Dutch law is applicable. With regard to price and stock data on the site, the publisher followed a number of starting points, which are not necessarily relevant for your private or business circumstances. Therefore, the price and stock data are only indicative and are subject to changes. You are personally responsible for the way you use and apply this information. As a user of the Information or sites or documents in which this Information is included, you will adhere to standard fair use including avoidance of spamming, ripping, intellectual-property violations, privacy violations, and any other illegal activity.