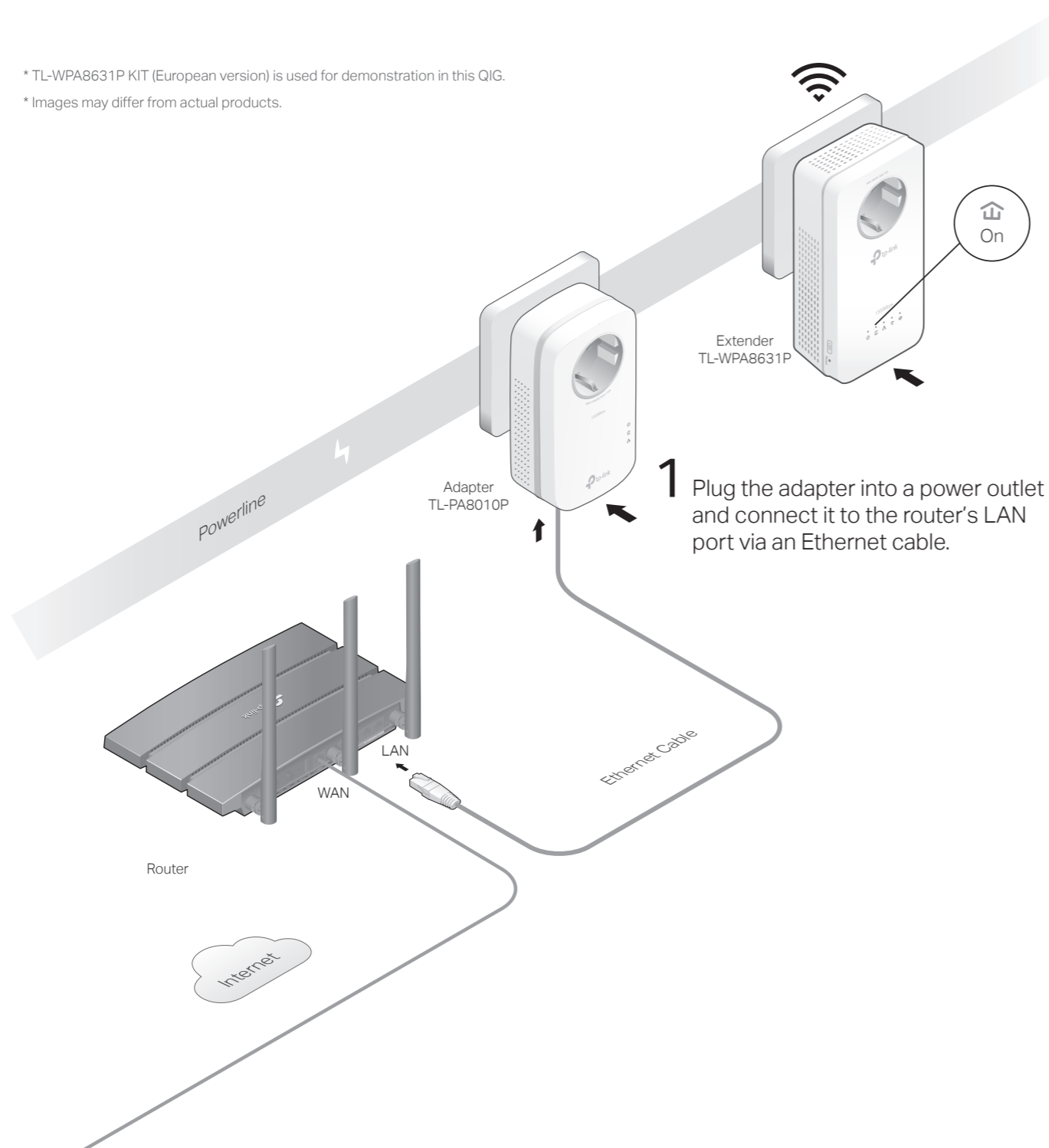


Quick Installation Guide

TL-WPA8631P KIT

* TL-WPA8631P KIT (European version) is used for demonstration in this QIG.

* Images may differ from actual products.



1 Plug the adapter into a power outlet and connect it to the router's LAN port via an Ethernet cable.

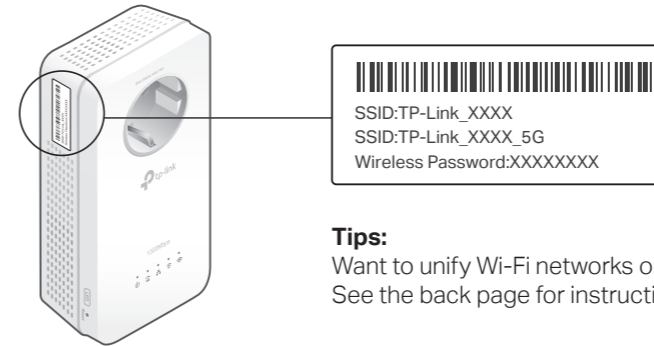
2 Plug in the extender into a power outlet on the same electrical circuit. Wait until the extender's Powerline LED turns on.

Note:

1. If only one wall outlet is available, plug both devices into a power strip for setup, then **relocate** to wall outlets before enjoying the internet.
2. If the extender's Powerline LED is off, try another wall socket, or refer to **Create a Secure Powerline Network by Pairing** on the back page to pair the powerline devices.

3 Enjoy!

Connect your devices to the internet using the default SSIDs (network names) and password on the label at the side of the extender.

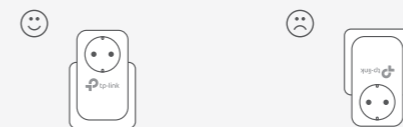


Tips:

Want to unify Wi-Fi networks or personalize your networks? See the back page for instructions.

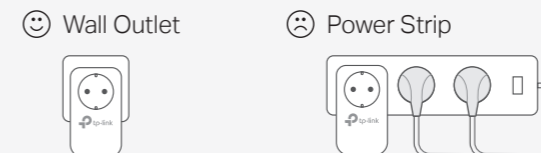
Attention

1. Use the product only in the upright direction.



2. Plug powerline devices into wall outlets instead of power strips.

Using power strip will affect network performance or even cause connection drops.




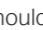
Unify Your Wi-Fi Networks

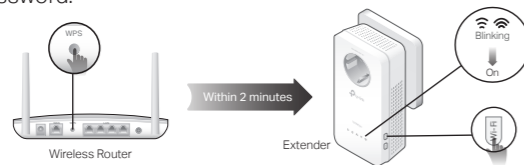
Copy SSID and password from your router via any of the methods below to create one unified Wi-Fi network throughout your home.

Note: If your router doesn't support the two methods below, refer to **Personalize Your Networks** section to manually change the extender's Wi-Fi settings.

Method ONE: Via Wi-Fi Button


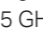

Note: You can use this method when your router has a WPS button.

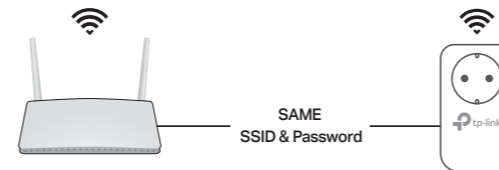
- 1 Press your router's WPS button.
- 2 (Within 2 minutes) press the extender's Wi-Fi button for 1 second. The extender's 2.4 GHz and 5 GHz Wi-Fi LEDs   should start blinking. When they turn solid on, Wi-Fi settings are copied.
Note: If Wi-Fi settings are not copied within 2 minutes, manually change the extender's Wi-Fi settings.
- 3 Relocate the extender and enjoy the internet using your router's SSID and password.



Method TWO: Via OneMesh™


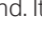

Note: You can use this method when your router supports OneMesh™.

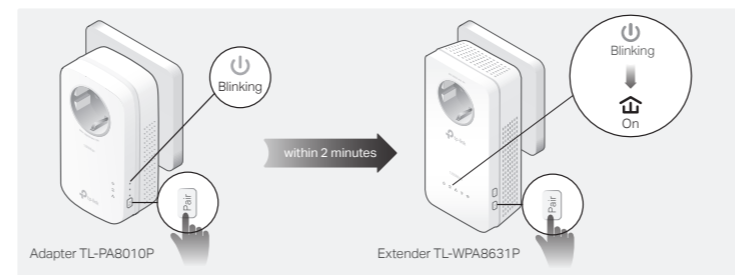
- 1 Connect your computer to the extender wirelessly. Then visit tplinkplc.net.
- 2 Go to  **OneMesh** and toggle on **Join OneMesh**. When the extender's 2.4 GHz and 5 GHz Wi-Fi LEDs   turn solid on, Wi-Fi settings are copied.
- 3 Enjoy the internet using your router's SSID and password. Any changes to the Wi-Fi settings of your router will be automatically copied to the extender.



Create a Secure Powerline Network by Pairing

Note: You can only pair two devices at a time. We recommend that you plug in the powerline devices near each other when pairing.

- 1 Press the Pair button on the adapter for 1 second. Its Power LED  should start blinking.
Note: If the Power LED does not blink, press the Pair button again.
- 2 (Within 2 minutes) press the extender's Pair button for 1 second. Its Power LED  should start blinking.
- 3 When the extender's Powerline LED  turns on, a powerline network has been successfully created.



Sync Wi-Fi Settings to More Extenders

If you have more extenders, simply plug in and pair each one with the existing adapter to join the network. Then the Wi-Fi settings will automatically sync from the existing extender to the new ones.

Personalize Your Networks

Manage your powerline devices using any of the methods below. You can change the SSID and password, set Wi-Fi schedules, create a guest network and more.

tpPLC App

For easy management via your smartphone or tablet, download the app from Apple App Store or Google Play, or simply scan the QR code.



tpPLC Utility

For easy management via your computer, download the utility on the product's Support page at <https://www.tp-link.com>.

Note: For detailed instructions, refer to the utility manual on the product's Support page.




Web Interface

To access all settings, connect to an extender wirelessly and visit <http://tplinkplc.net>.

Note: For detailed instructions, refer to the product manual on the product's Support page.

OneMesh™ with Seamless Roaming

TP-Link OneMesh™ router and extenders work together to form one unified Wi-Fi network. Walk through your home and stay connected with the fastest possible speeds thanks to OneMesh's seamless coverage.

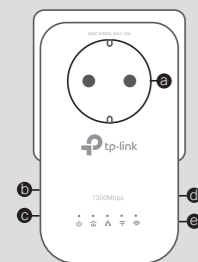
-  **Unified Wi-Fi Network**
Router and extenders share the same wireless settings, including network name, password and more.
-  **Seamless Roaming**
Devices automatically switch between your router and extenders as you move through your home for the fastest possible speeds.
-  **Easy Setup and Management**
Easily set up and manage a unified Mesh network.

To check full list of TP-Link OneMesh™ devices, scan the QR code, or visit <https://www.tp-link.com/One-Mesh/compatibility>.



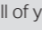
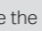
Physical Appearance

Extender TL-WPA8631P




- Integrated Electrical Socket**
Used as a pass-through AC outlet to power other devices. It also reduces some electrical noise that may interfere with powerline performance.
- LED Button**
Press for 1 second to turn all LEDs on or off.
- Reset Button**
Press for at least 5 seconds until all LEDs turn off to reset the extender to factory default settings.
- Wi-Fi Button**
Press for 1 second to begin or stop copying Wi-Fi settings from the router.
Press and hold for about 5 seconds to turn Wi-Fi on or off.
- Pair Button**
Press for 1 second on two powerline devices within two minutes to pair them.

Frequently Asked Questions

- Q1. How do I reset my extender to factory default settings?**
A. With the extender plugged into an electrical outlet, press and hold the Reset button until all LEDs turn off. When the LEDs turn back on, the reset process is complete.
- Q2. What should I do if my powerline network has no internet connection?**
A1. Make sure all powerline adapters and extenders are on the same electrical circuit.
A2. Make sure the Powerline LEDs  are lit on all of your powerline devices. If they are not, pair all devices again.
A3. Make sure all devices are correctly and securely connected.
A4. Check if you have an internet connection by connecting the computer directly to the modem or router.
- Q3. What should I do if a successfully-paired extender does not reconnect after it is relocated?**
A1. Make sure all powerline adapters and extenders are on the same electrical circuit.
A2. Try to pair the extender again, and make sure the Powerline LED  is on.
A3. Check for possible interference due to a washing machine, air conditioner or other household appliance that may be too close to one of the powerline devices. Plug the appliance into the integrated electrical socket to remove the electrical noise if your powerline device has an integrated electrical socket.

 To ask questions, find answers, and communicate with TP-Link users or engineers, please visit <https://community.tp-link.com> to join TP-Link Community.

 If you have any suggestions or needs for our product guides, you are welcome to email techwriter@tp-link.com.cn.

 For technical support, replacement services, user guides, and other information, please visit <https://www.tp-link.com/support>, or simply scan the QR code.



TP-Link hereby declares that the device is in compliance with the essential requirements and other relevant provisions of directives 2014/53/EU, 2009/125/EC, 2011/65/EU and (EU)2015/863. The original EU Declaration of Conformity may be found at <https://www.tp-link.com/en/support/ce/>
TP-Link hereby declares that the device is in compliance with the essential requirements and other relevant provisions of the Radio Equipment Regulations 2017. The original UK Declaration of Conformity may be found at <https://www.tp-link.com/support/ukcal/>

- Safety Information**
- Keep the device away from water, fire, humidity or hot environments.
 - Do not attempt to disassemble, repair, or modify the device. If you need service, please contact us.
 - Do not use the device where wireless devices are not allowed.
 - The socket-outlet shall be installed near the equipment and shall be easily accessible.
 - For passthrough devices, plug the power strips into the integrated electrical sockets of the devices, but devices of the same or another type not be stacked in normal use.
 - Plug the powerline devices directly into the wall outlets but not the power strips.

