



JLAB  
JBUDS  
MOUSE

We love that you are rocking JLab!  
We take pride in our products and fully stand behind them.



### YOUR WARRANTY

All warranty claims are subject to JLab authorization and at our sole discretion. Retain your proof of purchase to ensure warranty coverage.



### CONTACT US

Reach out to us at [support@jlab.com](mailto:support@jlab.com) or visit [jlab.com/contact](http://jlab.com/contact)

## REGISTER TODAY

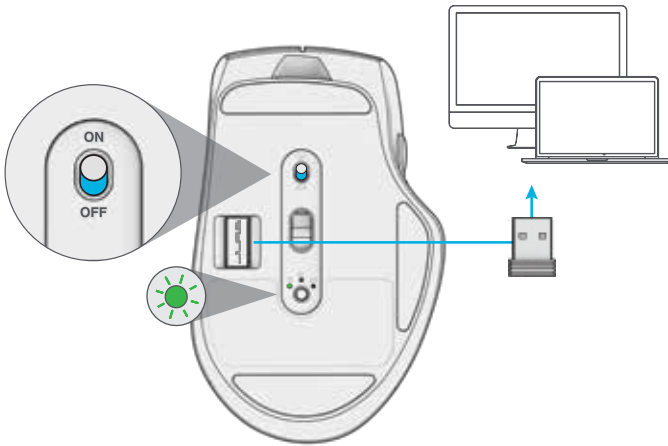
[jlab.com/register](http://jlab.com/register)

Product updates | How-to tips  
FAQs & more

## 1 SETUP

### 2.4 Connect

Plug in the USB dongle to computer and turn on.  
The JBuds Mouse will auto connect to device.



## 2 Bluetooth Connect

Quick Press to toggle to **1** or **2**.

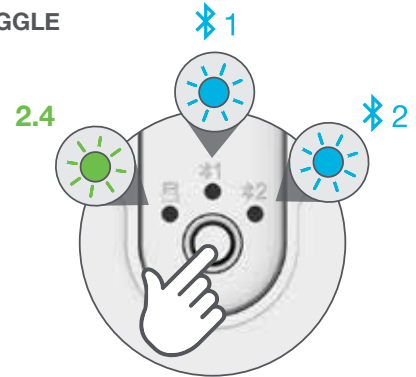
Then **Press and hold** to enter Pairing Mode (flashing light).  
Select "JLab JBuds Mouse" in device settings.

### QUICK PRESS TO TOGGLE

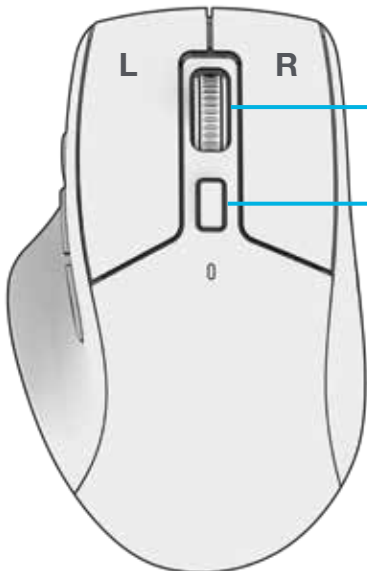
PRESS AND HOLD TO PAIR

PAIRING MODE:  
Flashing

PAIRED:  
Solid

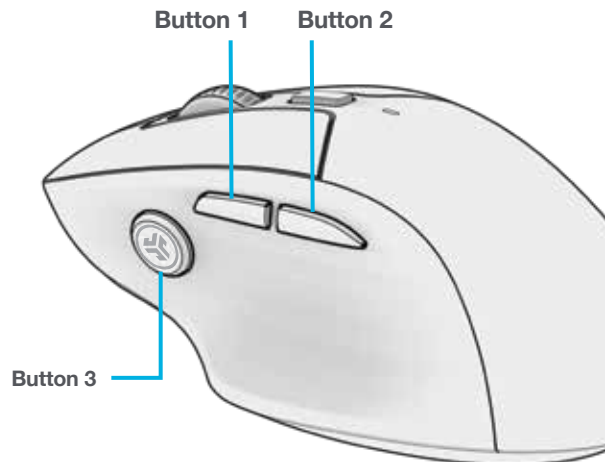


## INTERFACE



Scroll +  
Middle Button

DPI Button:  
Toggle mouse  
sensitivity  
(1200,1600,  
2000,2400)



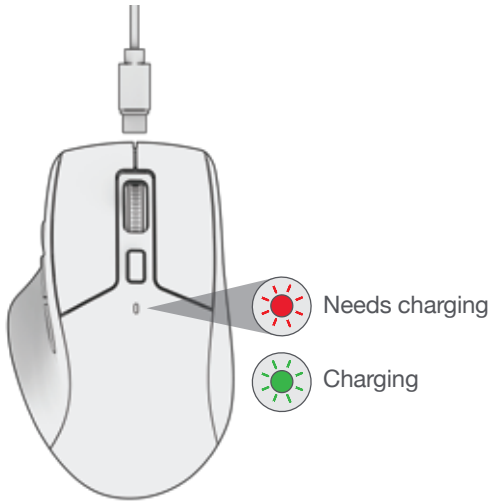
Button 1

Button 2

Button 3

## CHARGING

Connect the JBuds Mouse to computer or USB 5V 1A (or less) to charge.



## CUSTOMIZATION

Download the JLab App (for Mac and PC) to fully customize the JBuds Mouse at: [JLAB.COM/SOFTWARE](https://www.jlab.com/software)



(2.4 dongle needs to be plugged in for customizing software)



[Shop products](#) | [Product alerts](#) | [Burn-in your headphones](#)

JLab Store + Burn-in Tool

