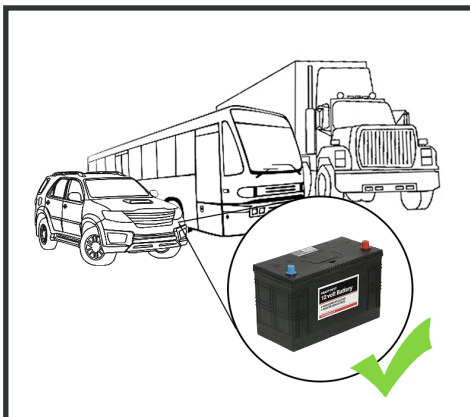
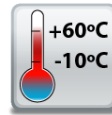


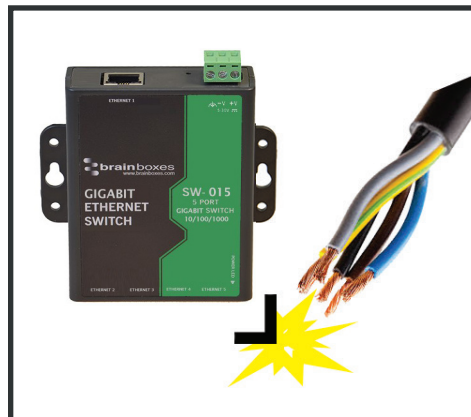
SW-015

5 Port Gigabit Ethernet Switch

- 5 Port Gigabit Ethernet Switch
- Power input: +5V to +30V DC
- Compact design with integral wall mount
- -10°C to +60°C/+14°F to +140°F temperature range
- Integral wall mount or optional DIN rail mount
- Connection LEDs on each Port



+5 to +30 Volt Power Input enables the device to be run from a standard car battery - ideal for in vehicle applications



Non conducting polyamide casing prevents electrical conduction - for safer installation



Integral wall mount option can be used with MK-048 clips to allow DIN rail mounting



SW-015

5 Port Gigabit Ethernet Switch

No software needed: Simply plug in any ethernet cable

All Ethernet ports are Auto MDI/MDIX supporting straight through or crossover Ethernet cables

Automatic detection of data transmission speed: 10 or 100 or 1000 MBps

-10°C to +60°C/+14°F to +140°F temperature range



Easy Wire Removable screw terminal block

Wide Range Input Power: +5VDC to +30VDC

Power consumption is optimised based on the status of the link device

Wall mount holes compatible with MK-048 DIN mount clips (MK-048 sold separately)

IP30 Non-conducting polyamide case

Connectors

Screw Terminals	3 way x 0.2inch/5.08mm pitch power supply
Wire Thickness	0.150 inch, 3.81mm, 20 pins, 12+8 screw terminals, #26 - #16 AWG, 0.14mm ² -1.3mm ²

Power Supply

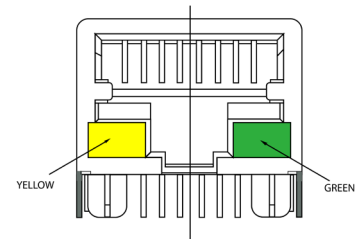
Power Consumption	3.6W Max: 720mA@ +5VDC/120mA@+30VDC
Power Supply input	Unregulated +5V to +30Volts DC, reverse polarity protection
Isolation	1500VRMS Magnetic isolation from Ethernet

Environmental

Operating Temperature	-10°C to +60°C / +14°F to +140°F
Storage Temperature	-10°C to +70°C / +14°F to +158°F
Ambient Relative Humidity	5 to 95% (non-condensing)

Magjack LED Information

Link/Activity LED	Solid green	Connection established
	Flashing Green	Data communication
Speed LED	Yellow	1Gbs
	Green	100Mbps
	Both	10Mbps

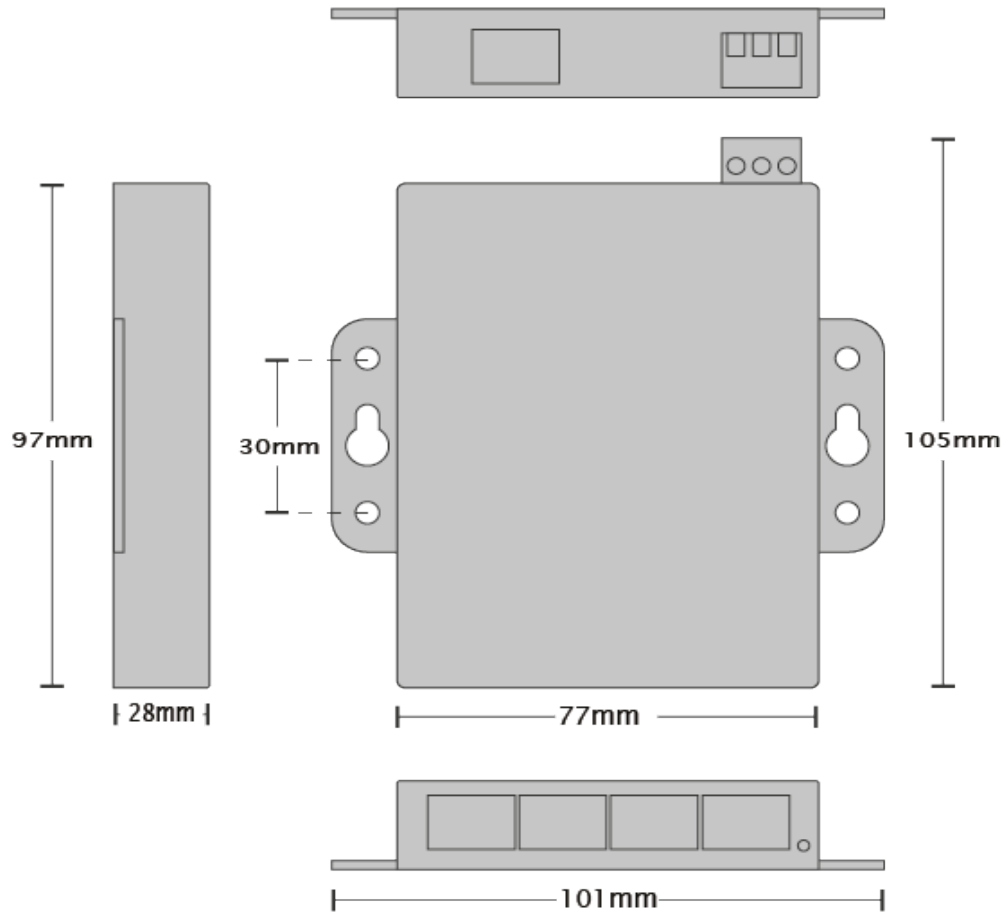


Ethernet

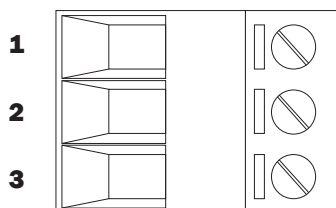
Ethernet Port	5 x RJ45 jack, 10/100/1000Mbps autosensing, crossover auto sensing (Auto MDIX)
---------------	--

Protection	1,500 Volts magnetic isolation between ports
------------	--

Housing	IP-30 rated non-conducting polyamide case
---------	---

SW-015
5 Port Gigabit Ethernet Switch

Power Terminal Pin Outs

PIN	FUNCTION
1	+V Power
2	-V Power
3	Functional Earth


Ethernet Ports x4 Pin Outs

PIN	FUNCTION
1	TxRxA+
2	TxRxA-
3	TxRxB+
4	TxRxC+
5	TxRxC-
6	TxRxB-
7	TxRxD+
8	TxRxD-

Lifetime Warranty and Support:

We can help with every aspect of your project, from getting you up and running to custom application.

SW-015

5 Port Gigabit Ethernet Switch

Product Information

Product Weight	0.1289 kg/4.55 ounces
Product Dimensions	106x101x26 mm/4.2x4.0x1.1 inches

Packaging Information

Packaging	Quick Start Guide
Device	5 Port Gigabit Ethernet Switch
Packaged Weight	0.209 kg/7.37 ounces
Packaged Dims	160x140x50mm/6.3x5.5x1.9 inches
GTIN Universal Code	837324004366

Approvals

Industry Approvals	Microsoft Certified Gold Partner, WEEE, RoHS, AEO (C-TPAT), CE
--------------------	--

Product Support

Warranty	Lifetime - online registration required
Support	Lifetime Web, Email and Phone Support from fully qualified, friendly staff who work in and alongside the Product Development Team

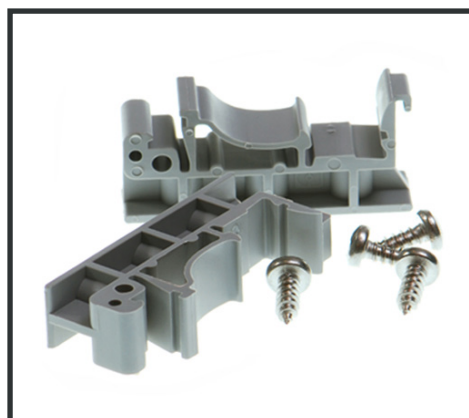
Additional Information

OEM option	Available for bulk buy OEM
Made In	Manufactured in the UK by Brainboxes Winner 2005 European Electronics Industry Awards 'Manufacturer of the Year'
Customisable	Brainboxes operate a 'Perfect Fit Custom Design' policy for volume users. More info:sales@brainboxes.com



PW-600

Power supply with connectors for UK, USA, EU and AUS mains socket. 'Tails' are suitable for connecting to screw terminal blocks.



MK-048

DIN Rail Mounting Kit Suitable for attaching to SW-005 to make device clip on to a DIN rail.



SW Range

Switch products available in a wide range of formats and specifications.

www.brainboxes.com