

1. Disassembly Procedures

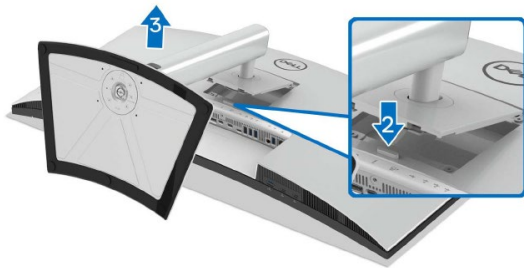
S1 Turn off power

S2 To remove the stand:

Place the monitor on the curve cushion in original packaging

Press and hold the stand release button at the back of the display

Lift the stand assembly up and away from the monitor



S3 Unlock 4 screws on "Rear Cover"



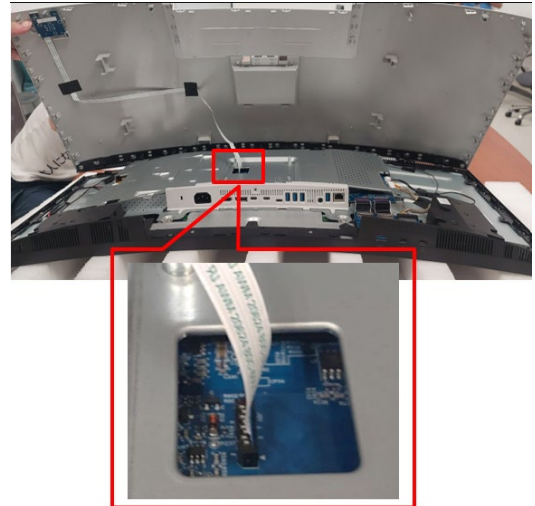
(Screw Torque:8-10Kgf)

S4 Use hands or Bar Scraper to disassemble "Rear Cover" from "Middle Frame"

Notice the disassembly order:
Left Side=>Top Side =>Right Side
=>Bottom Side



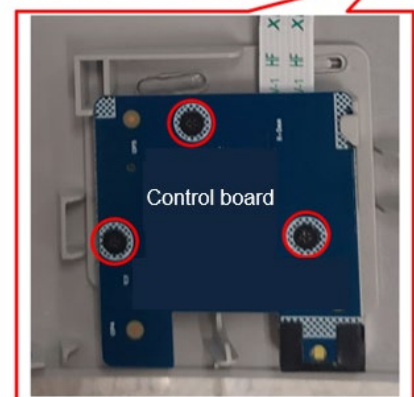
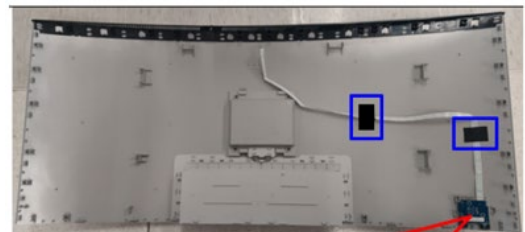
S5 Pull out "Control board FFC" from "Interface board" to take off "Rear Cover"



S6 Tear off 2 tapes from "Rear Cover"

Tear off "Control board FFC" from "Rear Cover"

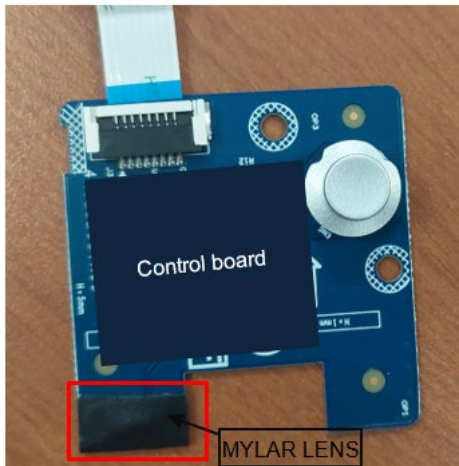
Unlock 3 screws to disassemble "Control board" from "Rear Cover"



(Screw Torque: 2.0+0.5 Kgf)

S7 Unplug "Control board FFC" from "Control board"

Tear off "MYLAR LENS" from "Control board"

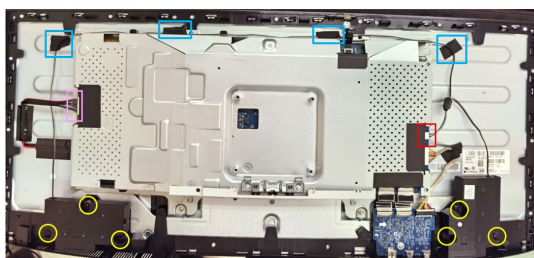


S8 Unplug "Backlight wire" from "LED Driver board" (See pink mark)

Unplug "Speaker wire" from "Interface board" (See red mark)

Tear off 4 tapes from "Speaker wire" and "Panel" (See blue Mark)

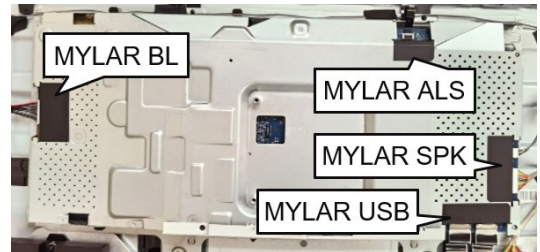
Unlock 6 screws to disassemble "Speaker" from "Middle Frame" (See yellow mark)



(Screw Torque: 5~6 Kgf)

S9 Tear off below mylars from "Main Shielding"

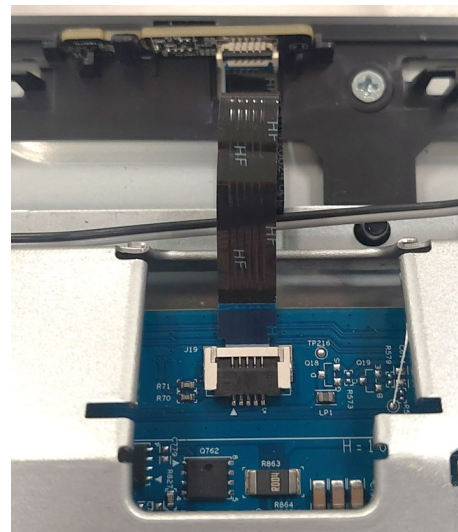
- a. MYLAR BL
- b. MYLAR USB
- c. MYLAR SPK
- d. MYLAR ALS



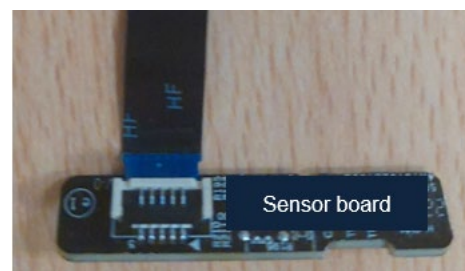
S10 Unplug "Ambient Light Sensor FFC" from "Interface board"

Tear off "Ambient Light Sensor FFC" from "Main Shielding"

Disassemble "Sensor board" from "Middle Frame"



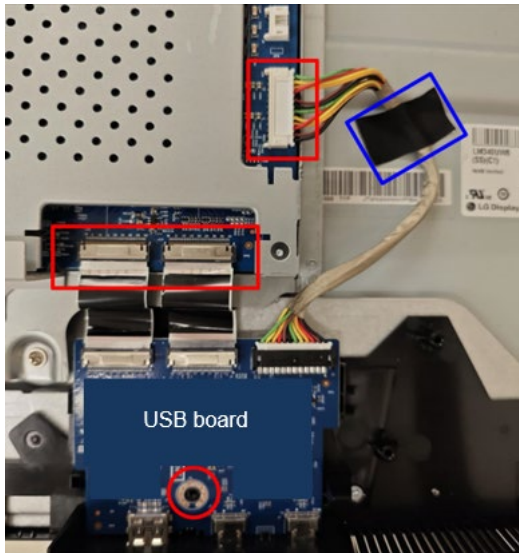
S11 Unplug "Ambient Light Sensor FFC" from "Sensor board"



- S12** Tear off an acetate tape from “USB board wire” and “Panel”

Unplug 2 “USB board FFC” and “USB Board wire” from “Interface board”

Unlock 1 screw to disassemble “USB board” from “Middle Frame”

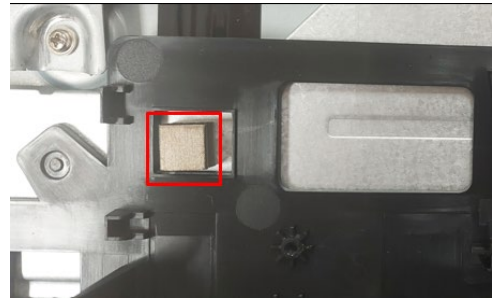


(Screw Torque: 4.5±0.5 Kgf)

- S13** Unplug all cables from “USB board”



- S14** Disassemble a “GASKET” from “Panel”



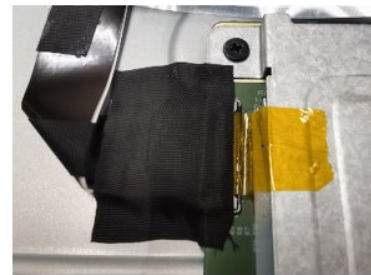
- S15** Unlock 4 screws to disassemble “Main Shielding” from “Panel”



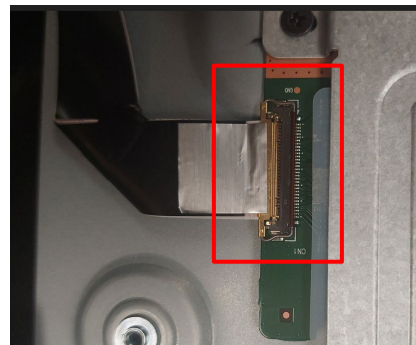
(Screw Torque: 4.5-5.5 Kgf)

- S16** Tear off an acetate tape from “FFC EDP” and “Panel”

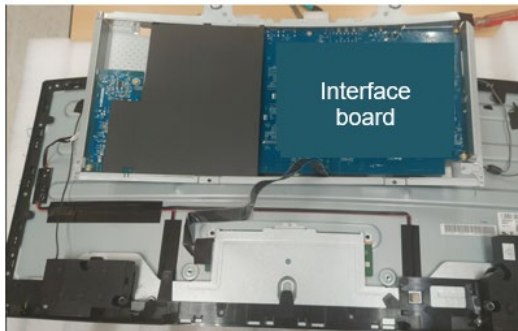
Tear off a yellow tape from “FFC EDP” connector



- S17** Unplug “FFC EDP” from “Panel”



- S18** Take off “Main Shielding” from “Panel”



- S19** Unlock 19 screws to disassemble “Middle Frame” from “Panel”

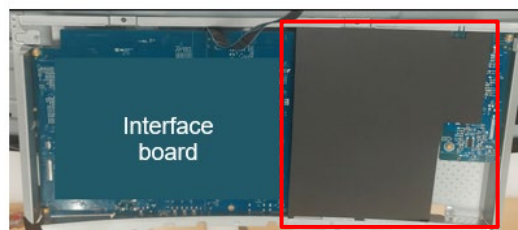


(Screw Torque: 3.5-4.0 Kgf)

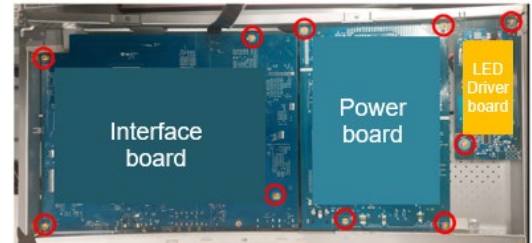
- S20** Disassemble 6 pieces of “Boss Panel” from “Panel”



- S21** Disassemble “MYLAR Power” from “Main Shielding”

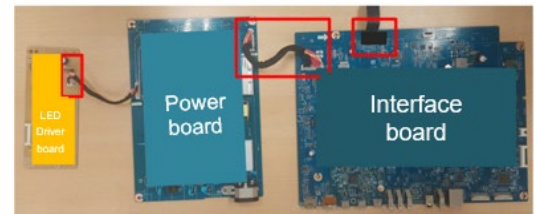


- S22** Unlock 10 PCBA screws to disassemble “Interface board”, “Power board” and “LED Driver board” from “Main Shielding”



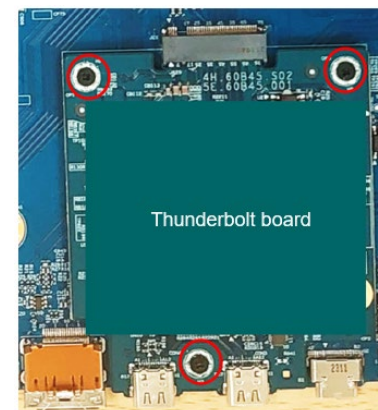
(Screw Torque: 8.5±1Kgf)

- S23** Unplug wires from “Interface board”, “Power board” and “LED Driver board”



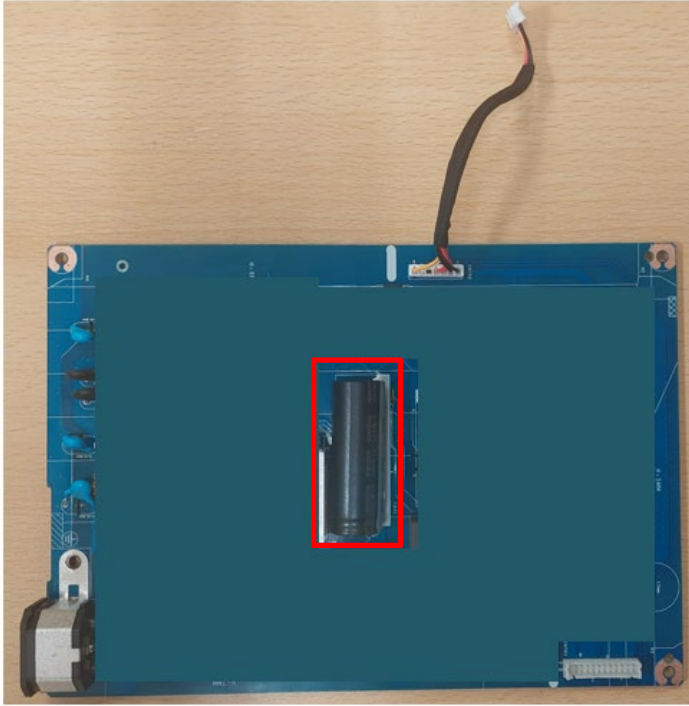
- S24** Unlock 3 screws to disassemble “Thunderbolt board” from “Interface board”

Take off “Thunderbolt board” from “Interface board”

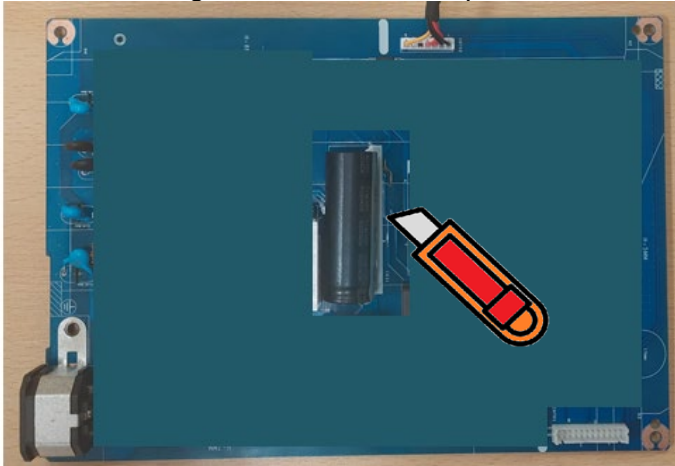


(Screw Torque: 2.0-3.0 Kgf)

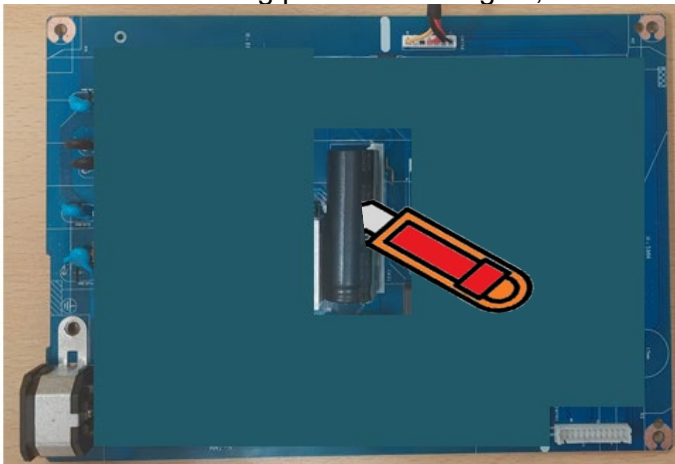
S25 Remove electrolyte capacitors (red mark) from printed circuit boards



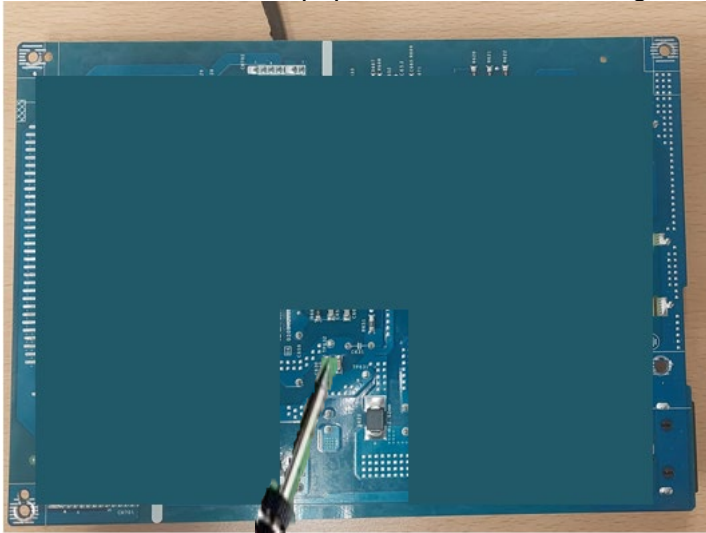
S25-1 Cut the glue between bulk cap. and PCB with a knife



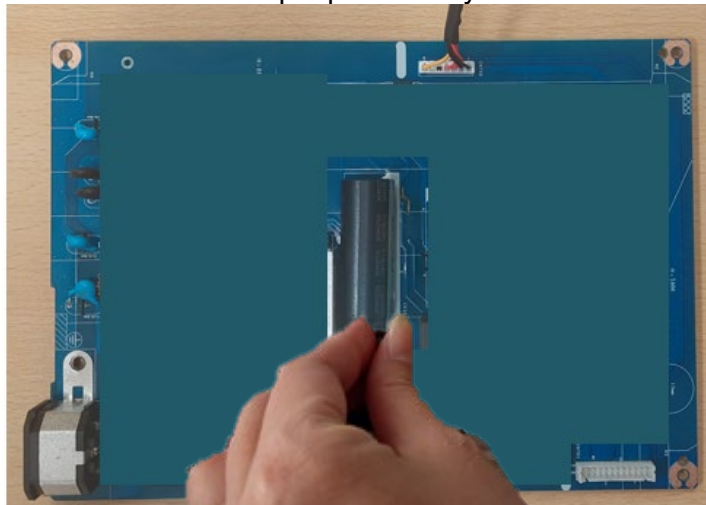
S25-2 Ensure cutting path within the glue, don't touch bulk cap. or PCB



S25-3 Take out bulk cap. pin solder with soldering iron and absorber



S25-4 Lift the bulk cap. up and away from the PCB



2. Product material information

The following substances, preparations, or components should be disposed of or recovered separately from other WEEE in compliance with Article 4 of EU Council Directive 75/442/EEC.

Capacitors / condensers (containing PCB/PCT)	No used
Mercury containing components	No used
Batteries	No used
Printed circuit boards (with a surface greater than 10 square cm)	Product has printed circuit boards (with a surface greater than 10 square cm)
Component contain toner, ink and liquids	No used
Plastic containing BFR	No used
Component and waste contain asbestos	No used
CRT	No used
Component contain CFC, HCFC, HFC and HC	No used
Gas discharge lamps	No used
LCD display > 100 cm ²	Product has an LCD greater than 100 cm ²
External electric cable	Product has external cables
Component contain refractory ceramic fibers	No used
Component contain radio-active substances	No used
Electrolyte capacitors (height > 25mm, diameter > 25mm)	Product has electrolyte capacitors (height >25mm, diameter > 25mm)

3. Tools Required

List the type and size of the tools that would typically can be used to disassemble the product to a point where components and materials requiring selective treatment can be removed.

Tool Description:

- Phillips-head Screwdriver
- Penknife
- Bar scraper
- Curve cushion