

**Dell P5524Q**  
**Dell Display Control**  
**User's Guide**



**Copyright © 2023 Dell Inc. or its subsidiaries. All rights reserved.** Dell, EMC, and other trademarks are trademarks of Dell Inc. or its subsidiaries. Other trademarks may be trademarks of their respective owners.

2023 – 08

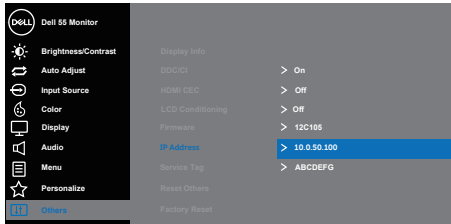
Rev. A00

# Contents

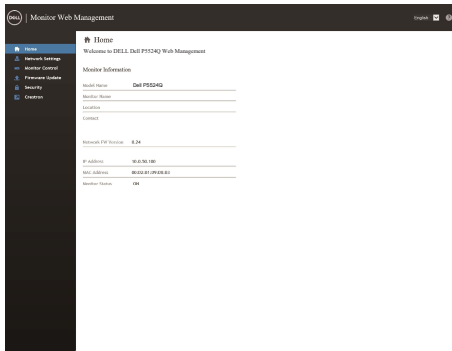
|                            |    |
|----------------------------|----|
| Dell Display Control ..... | 4  |
| Main window .....          | 6  |
| Tools Window.....          | 7  |
| Info window .....          | 9  |
| Help Desk window.....      | 10 |
| Emergency Alert .....      | 10 |

# Dell Display Control

Find the monitor's IP address from OSD menu (Others->IP Address).



Open a web browser and enter the monitor's IP address (e.g. <http://10.0.50.100>) in the address bar. The Home page opens and click Crestron for the control interface.

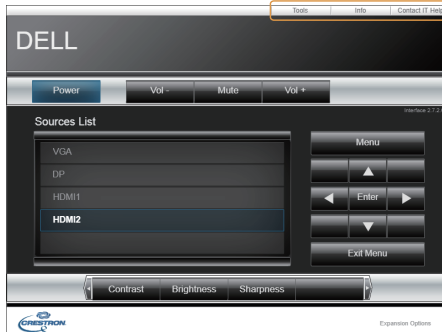


The Main window as shown below is displayed.



You can open a window by clicking the corresponding tab at the top right of the window.

| Tab             | Description                              |
|-----------------|--|
| Tools           | Opens <a href="#">Tools window</a> .     |
| Info            | Opens <a href="#">Info window</a> .      |
| Contact IT Help | Opens <a href="#">Help Desk window</a> . |



# Main window



You can operate the basic controls of the monitor on this screen.

1. Click a button and operate as follows.

| Button       | Description                 |
|--------------|-----------------------------|
| Power        | Turns the power on/off      |
| Vol -/ Vol + | Adjusts the volume settings |
| Mute         | Toggles Mute on/off         |

2. Sources List

You can click a button to switch the input channel. The cursor will move according to the currently selected input port.

| Button | Description                     |
|--------|---------------------------------|
| VGA    | Selects input from VGA port.    |
| DP     | Selects input from DP port.     |
| HDMI 1 | Selects input from HDMI 1 port. |
| HDMI 2 | Selects input from HDMI 2 port. |

3. Click a button and operate as follows. To show the hidden buttons, click the ◀/▶ icons if applicable at the left and right ends.

| Button     | Description                     |
|------------|---------------------------------|
| Contrast   | Adjusts the contrast setting.   |
| Brightness | Adjusts the brightness setting. |
| Sharpness  | Adjusts the sharpness setting.  |



4. Click the button and operate in the same way as the remote control.

| Button    | Description   |
|-----------|---|
| Menu      | Assigned the same operation as <b>MENU</b> button.      |
| Enter     | Assigned the same operation as <b>ENTER</b> button.     |
| Exit Menu | Assigned the same operation as <b>EXIT MENU</b> button. |
| ▲         | Assigned the same operation as ▲ button.                |
| ▼         | Assigned the same operation as ▼ button.                |
| ◀         | Assigned the same operation as ◀ button.                |
| ▶         | Assigned the same operation as ▶ button.                |

## Tools Window

The screenshot shows the 'Tools' window for Dell. It features a 'DELL' header and a 'Tools' menu. The main area is divided into four configuration sections:
 

- Crestron Control:** Fields for IP Address (255.255.255.255), IP ID (7), and Port (41734). A 'Send' button is at the bottom.
- Monitor:** Fields for Model Name (DELL P5040), Location, Room, and Monitor Name. A 'Send' button is at the bottom.
- User Password:** Fields for New Password and Confirm. A 'Send' button is at the bottom.
- Admin Password:** Fields for New Password and Confirm. A 'Send' button is at the bottom.

 A large 'Exit' button is located at the bottom center. A 'Crestron' logo is in the bottom left, and 'Expansion Options' is in the bottom right. Numbered callouts 1-5 point to the IP Address field, the Monitor Model Name field, the Crestron Control 'Send' button, the User Password 'Send' button, and the Admin Password 'Send' button respectively.

Configures the settings between the monitor and Crestron® control system. Click the **[Exit]** button to return to the Main window.

### 1. Crestron Control

Configures the settings of Crestron® control system devices.

| Item       | Description   |
|------------|---|
| IP Address | Configures the IP address of the control system.                        |
| IP ID      | Configures the IP ID of the control system.                             |
| Port       | Specifies the port number used for communication by the control system. |

To apply the settings, click the **[Send]** button.



## 2. Monitor

Configures the monitor settings.

| Item         | Description  |
|--------------|--|
| Monitor Name | Configures the name of the monitor. The length of the Monitor Name can be up to 22 alphanumeric characters.    |
| Location     | Configures the location name of the monitor. You can specify a Location name up to 22 alphanumeric characters. |
| Assigned To  | Configures the user name for the monitor. You can specify a user name up to 22 alphanumeric characters.        |

The usable symbols are space and the following: !"#%&'()\*+,-./:;<=>?@[\\]^\_`{|}~  
To apply the settings, click the **[Send]** button.

## 3. Network Setting

Configures the network settings of the monitor.

| Item            | Description   |
|-----------------|---|
| DHCP            | Enables DHCP.   |
| IP Address      | Configures the IP address when DHCP is disabled.      |
| Subnet Mask     | Configures the subnet mask when DHCP is disabled.     |
| Default Gateway | Configures the default gateway when DHCP is disabled. |
| DNS Server      | Configures the DNS server address.                    |

To apply the settings, click the **[Send]** button.

## 4. User Password

Configures the User Password. To prompt the entry of User Password before starting Display control, select the checkbox.

| Item         | Description  |
|--------------|--|
| New Password | Configures the password. You can specify a password up to 22 alphanumeric characters. The usable symbols are space and the following: !"#%&'()*+,-./:;<=>?@[\\]^_`{ }~ |
| Confirm      | Re-enter the above password for verification. If the password is incorrect, an error message is displayed.   |

To apply the settings, click the **[Send]** button.

## 5. Admin Password

Configures the Admin Password. To prompt the entry of Admin Password before displaying the Tools window, select the checkbox.

| Item         | Description  |
|--------------|--|
| New Password | Configures the password. You can specify a password up to 22 alphanumeric characters. The usable symbols are space and the following: !"#%&'()*+,-./:;<=>?@[\\]^_`{ }~ |
| Confirm      | Re-enter the above password for verification. If the password is incorrect, an error message is displayed.   |





To apply the settings, click the **[Send]** button.

## Info window



Displays the settings and status of the monitor. Click the **[Exit]** button to return to the Main window.

### 1. Monitor Information

| Item             | Description  |
|------------------|--|
| Model Name       | Displays the model name of the monitor.            |
| Location         | Displays the the location name of the monitor.     |
| Firmware Version | Displays the version of the monitor firmware.      |
| MAC address      | Displays the wired LAN MAC address of the monitor. |
| Monitor Name     | Displays the user name of the monitor.             |

### 2. Monitor Status

| Item         | Description                                |
|--------------|--|
| Power Status | Displays the current power status.         |
| Source       | Displays the current input signal source.  |
| Image        | Displays the current picture mode setting. |

**NOTE:** Monitor Name, Location and the user name for Assigned To may appear truncated if they are too long.



## Help Desk window



Sends/receives messages to/from the administrator for Crestron RoomView® Express.

| Button | Description      |
|--------|------------------|
| Send   | Sends a message. |

## Emergency Alert



When the administrator for Crestron RoomView® Express sends out an alert message, it will be displayed on the screen.

