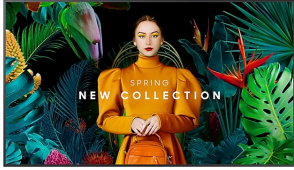


Samsung QH65C Digital signage flat panel 165.1 cm (65") LCD Wi-Fi 700 cd/m² 4K Ultra HD Black Tizen 24/7

Brand : Samsung

Product code: LH65QHCEBGXEN

Product name : QH65C



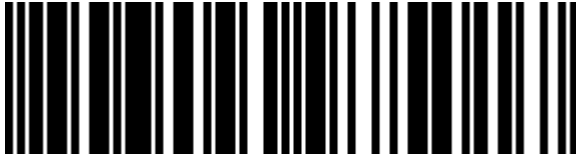
- Ultra Slim Depth
- Even Bezel
- Centered VESA Holes

Crystal UHD Signage QHC 65", 3840 x 2160 VA, 3 x HDMI, 1 x DisplayPort, Ethernet, Wi-Fi, Bluetooth
 Samsung QH65C. Product design: Digital signage flat panel. Display diagonal: 165.1 cm (65"), Display technology: LCD, Display resolution: 3840 x 2160 pixels, Display brightness: 700 cd/m², HD type: 4K Ultra HD. Wi-Fi. Operating hours (hours/days): 24/7. Operating system installed: Tizen. Product colour: Black



Display		Design	
Panel type	VA	Bezel width (top)	1.15 cm
LED backlight	✓	Mounting type	Wall
Display diagonal *	165.1 cm (65")	Performance	
Display technology *	LCD	Purpose *	Universal
Display resolution *	3840 x 2160 pixels	Operating hours (hours/days)	24/7
Display brightness *	700 cd/m ²	Power	
HD type *	4K Ultra HD	Power consumption (typical) *	203.5 W
Touchscreen *	✗	Power consumption (standby) *	0.5 W
Response time	8 ms	Energy efficiency class (SDR)	G
Contrast ratio (typical)	4000:1	Energy consumption (SDR) per 1000 hours	148 kWh
Dynamic contrast ratio marketing name	Mega Contrast	AC input voltage	100 - 240 V
Pixel pitch	0.372 x 0.372 mm	AC input frequency	50/60 Hz
Horizontal scan range	30 - 81 kHz	Energy efficiency scale	A to G
Vertical scan range	48 - 75 Hz	Computer system	
Haze rate	25%	Operating system installed	Tizen
Ports & interfaces		Operating system version	7.0
HDMI ports quantity *	3	Weight & dimensions	
HDMI version	2.0	Display width	1456.8 mm
DVI port *	✗	Display depth	28.5 mm
DisplayPorts quantity *	1	Display height	831.9 mm
DisplayPorts in	1	Display weight	22.7 kg
USB port *	✓	Packaging data	
USB ports quantity	2	Package width	1616 mm
Ethernet LAN *	✓	Package depth	164 mm
Ethernet LAN (RJ-45) ports	1	Package height	945 mm
Wi-Fi *	✓	Package volume	29600 cm ³
RS-232 interface	✓	Operational conditions	
Infrared data port	✓	Operating temperature (T-T)	0 - 40 °C
Card reader integrated	✗	Operating relative humidity (H-H)	10 - 80%
Design			
Product design *	Digital signage flat panel		

Design		Certificates	
Placement supported *	Indoor	Certification	60950-1, 62368-1
Orientation	Horizontal	Features	
Product colour *	Black	Suitable for indoor use	✓
Screen shape	Flat	Technical details	
VESA mounting *	✓	Sustainability compliance	✓
Panel mounting interface	400 x 300 mm	Sustainability certificates	ENERGY STAR, EPEAT Bronze
Bezel width (bottom)	1.15 cm	Other features	
Bezel width (side)	1.15 cm	Bluetooth	✓



8806094975017

Disclaimer. The information published here (the "Information") is based on sources that can be considered reliable, typically the manufacturer, but this Information is provided "AS IS" and without guarantee of correctness or completeness. The Information is only indicative and can be changed at any time without notification. No rights can be based on the Information. Suppliers or aggregators of this Information do not accept any liability with regard to the content of (web)pages and other documents, including its Information. The publisher of the Information can not be held liable for the content of 3rd party websites that are linking this Information or are linked to from this Information. You as the User of the Information are solely responsible for the choice and usage of this Information. You are not entitled to transfer, copy or otherwise multiply or distribute the Information. You are obliged to follow the directions of the copyright owner(s) with regard to the use of the Information. Exclusively Dutch law is applicable. With regard to price and stock data on the site, the publisher followed a number of starting points, which are not necessarily relevant for your private or business circumstances. Therefore, the price and stock data are only indicative and are subject to changes. You are personally responsible for the way you use and apply this information. As a user of the Information or sites or documents in which this Information is included, you will adhere to standard fair use including avoidance of spamming, ripping, intellectual-property violations, privacy violations, and any other illegal activity.

Publication date: 09-MAY-2024. Prints or copies of Information are only valid on the printed Publication date