

# DeepCool LS720 SE Processor All-in-one liquid cooler 12 cm Black 1 pc(s)

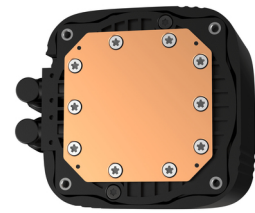
**Brand :** DeepCool

**Product code:** R-LS720-BKAMMM-G-1

**Product name :** LS720 SE



LGA1700/1200/1151/1150/1155, AM5/AM4, 4-Pin PWM, RGB LED, 1659g  
 DeepCool LS720 SE. Type: All-in-one liquid cooler, Fan diameter: 12 cm, Maximum airflow: 85.85 cfm, Maximum air pressure: 3.27 mmH2O. Product colour: Black



| Performance                          |  | Design                       |                   |
|--------------------------------------|--|------------------------------|-------------------|
| Suitable location *                  | Processor  | Fan connector                | 4-pin             |
| Type *                               | All-in-one liquid cooler   | Power                        |                   |
| Fan diameter                         | 12 cm  | Fan power consumption        | 3 W               |
| Supported processor sockets          | LGA 1150 (Socket H3), LGA 1151 (Socket H4), LGA 1155 (Socket H2), LGA 1200 (Socket H5), LGA 1700, Socket AM4, Socket AM5 | Pump power consumption       | 4.56 W            |
| Maximum airflow                      | 85.85 cfm  | LED voltage                  | 5 V               |
| Maximum air pressure                 | 3.27 mmH2O   | Pump voltage                 | 12 V              |
| Pulse-width modulation (PWM) support | ✓  | Pump current                 | 380 mA            |
| Fan noise level (max)                | 32.9 dB  | Fan voltage                  | 12 V              |
| Pump noise level                     | 19 dB  | Fan current                  | 0.25 A            |
| Fan bearing technology               | Hydro bearing  | LED power consumption (fan)  | 3.15 W            |
| Pump connector                       | 3-pin  | LED power consumption (pump) | 2.7 W             |
| Quantity per pack                    | 1 pc(s)  | Weight & dimensions          |                   |
| Pump motor speed                     | 3100 RPM   | Radiator width               | 12 cm             |
| Fan speed (min)                      | 500 RPM  | Radiator depth               | 40.2 cm           |
| Fan speed (max)                      | 2250 RPM   | Radiator height              | 2.7 cm            |
| Design                               |  | Tube length                  | 41 cm             |
| Product colour *                     | Black  | Pump width                   | 8.5 cm            |
| Radiator material                    | Aluminum   | Pump depth                   | 7.3 cm            |
| Base plate material                  | Copper   | Pump height                  | 5.5 cm            |
| Number of fans                       | 3 fan(s)   | Weight                       | 1.66 kg           |
| Number of fan blades                 | 9  | Fan dimensions (W x D x H)   | 120 x 120 x 25 mm |
| Illumination LED                     | ✓  | Packaging content            |                   |
| Illumination colour                  | Multi  | Package type                 | Box               |
| LED connector type                   | 3-pin  | Mounting kit                 | ✓                 |
|                                      |  | Screws included              | ✓                 |
|                                      |  | CPU bracket(s)               | ✓                 |



6933412728009

Disclaimer. The information published here (the "Information") is based on sources that can be considered reliable, typically the manufacturer, but this Information is provided "AS IS" and without guarantee of correctness or completeness. The Information is only indicative and can be changed at any time without notification. No rights can be based on the Information. Suppliers or aggregators of this Information do not accept any liability with regard to the content of (web)pages and other documents, including its Information. The publisher of the Information can not be held liable for the content of 3rd party websites that are linking this Information or are linked to from this Information. You as the User of the Information are solely responsible for the choice and usage of this Information. You are not entitled to transfer, copy or otherwise multiply or distribute the Information. You are obliged to follow the directions of the copyright owner(s) with regard to the use of the Information. Exclusively Dutch law is applicable. With regard to price and stock data on the site, the publisher followed a number of starting points, which are not necessarily relevant for your private or business circumstances. Therefore, the price and stock data are only indicative and are subject to changes. You are personally responsible for the way you use and apply this information. As a user of the Information or sites or documents in which this Information is included, you will adhere to standard fair use including avoidance of spamming, ripping, intellectual-property violations, privacy violations, and any other illegal activity.

Publication date: 09-MAY-2024. Prints or copies of Information are only valid on the printed Publication date