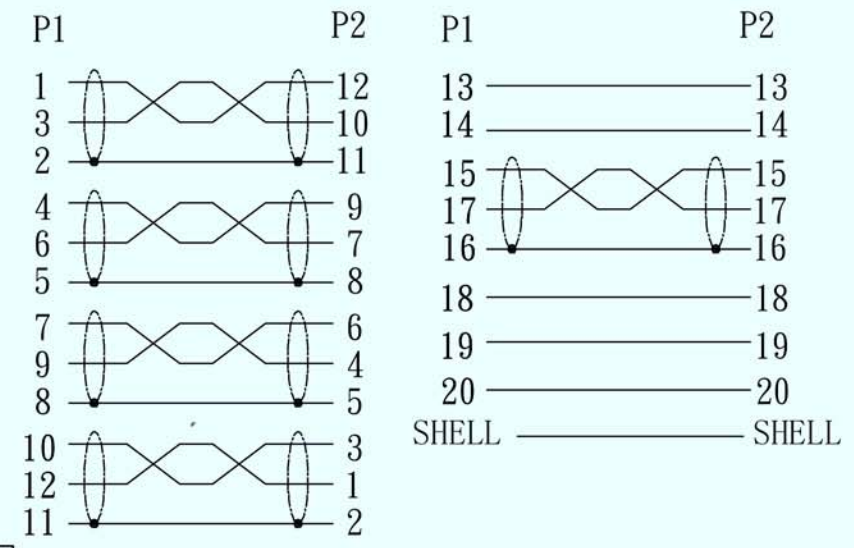


PIN OUT



NOTES:

- 1:100% short,open and miss wire test.
- 2:CABLE MARKING:DisplayPort Cable E***** AWM
STYLE 20276 80°C 30V VW-1
- 3:RoHS & REACH Compliant.

⑤	OUTER MOLDED	BLACK 45P PVC	0.028	KG
④	INNER MOLDED	LDPE	0.021	KG
③	SHELL	ABS OUTER COVER FOR DP MALE,HOOK TYPE,BLACK	2	PCS
②	CONNECTOR	DP MALE,HOOK TYPE,GOLD PLATED CONTACTS AND SHELL,BLACK INSULATION	2	PCS
①	CABLE	(1P*7/0.1TC+D+FAM)*5C+5C*7/0.1TC+FILL+AL+D+B, JACKET:BLACK PVC,OD:6.0±0.2MM	1	M
NO.	MATERIAL	DESCRIPTION	QTY.	UNIT

Ltemref	Quantity	Title/Name,designation,material,dimension etc			Article No./Reference	
Designed by	Checked by	Approved by - date	File name	Date	Scale	
		NOV 21.2017	DP12,M-M,1M	NOV 21.2017	FREE	
ANGLE:		DISPLAYPORT CABLE,1.2V,M-M,BLACK,1M				
UNIT:MM		26-6010	Edition	Sheet		
			1	1/1		