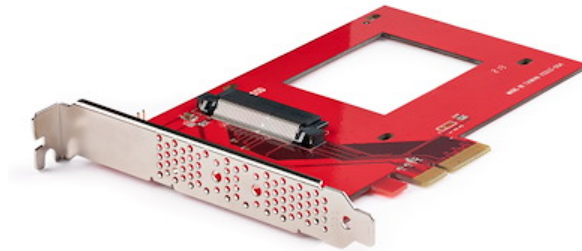


U.3 to PCIe Adapter Card, PCIe 4.0 x4 Adapter For 2.5" U.3 NVMe SSDs, SFF-TA-1001 PCI Express Add-in Card for Desktops/Servers, TAA Compliant - OS Independent

**Product ID:** PEX4SFF8639U3



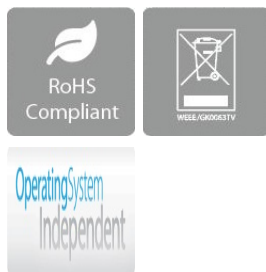
Add a 2.5 inch U.3 NVMe SSD into a PCIe 4.0 x4/x8/x16 slot in a desktop or server using the included screws, enabling ultra-fast data access.

Install an SFF-TA-1001 SSD into a desktop or server using an available PCI Express 4.0 slot. The pre-installed full-profile bracket and included drive mounting screws enable the connection of a U.3 NVMe drive to a PCIe slot, avoiding the need for a drive backplane or additional cables. This adapter is not compatible with U.2 drives.

The Adapter Card is backward compatible with motherboards that feature x4, x8, and/or x16 PCIe 3.0 slots. The U.3 Adapter requires no additional drivers or software and works with all workstation and server operating systems, such as Windows, Windows Server, and Linux.

The vented full-profile bracket and a large cutout in the PCB allow for better airflow and heat dissipation, which helps maintain optimal and reliable performance while avoiding thermal throttling.

## Certifications, Reports and Compatibility



## Applications

- Add U.3 NVMe capabilities in a PCIe-enabled desktop or server
- Streamline audio/video production and editing involving large files
- Enhance productivity for data-intensive applications, making it ideal for developers and content creators

## Features

- **ADD HIGH PERFORMANCE U.3 STORAGE:** Add a 2.5 inch U.3 NVMe SSD into a PCIe 4.0 x4/x8/x16 slot in a desktop or server, enabling ultra-fast data access; Supports SFF-TA-1001 drives up to 15mm in height; Not compatible with U.2 drives
- **UNIVERSAL COMPATIBILITY:** Backwards compatible with PCI Express 3.0 motherboards that have an available x4, x8, or x16 PCIe slot; U.3 Adapter works with all workstation and server operating systems such as Windows, Windows Server, and Linux
- **PREVENT OVERHEATING:** Vented full-profile bracket and a large cutout in the PCB allow for better airflow and heat dissipation, which helps maintain optimal and reliable performance while reducing potential thermal throttling
- **HASSLE-FREE SETUP:** Pre-installed full-profile bracket & included drive mounting screws enable the connection of a U.3 drive to a PCIe slot, without the need of a drive backplane or additional cables; The U.3 to PCIe Card requires no drivers or software
- **THE IT PRO'S CHOICE:** Designed and built for IT Professionals, this U.3 to PCI Express Adapter Card is backed for two years, including free lifetime 24/5 multi-lingual technical assistance

---

## Hardware

Warranty	2 Years
Fan(s)	No
Interface	PCI Express x4
Bus Type	PCI Express
Number of Drives	1
Drive Size	2.5in
Compatible Drive Types	U.3 (PCIe, NVMe, SFF-TA-1001)
Drive Installation	Fixed
Supported Drive Height(s)	15mm
	12.5mm
	9.5mm

7mm

5mm

---

**Performance**

Hardware Raid Supported	No
Hot Swap Capability	No
MTBF	21,693,912 Hours

---

**Connector(s)**

Drive Connectors	1 - U.3 (PCIe, NVMe, SFF-TA-1001)
Host Connectors	1 - PCI Express x4
Other Interface(s)	1 - IDC (2 pin, Motherboard Header)

---

**Software**

OS Compatibility	No Drivers or Software Required
------------------	---------------------------------

---

**Special Notes / Requirements**

Note	<p>This product is compatible with U.3 drives only. U.2, SAS, and SATA drives are incompatible.</p> <p>This product is backwards compatible with PCIe 3.0 slots, operating at reduced speeds.</p> <p>NVMe SSDs may require additional drivers, provided by the manufacturer, or may be natively provided by the operating system (Windows 8 and later - Mac OS 10.10.3 and later). Earlier OS versions do not have native NVMe support.</p>
------	---

---

**Indicators**

LED Indicators	<p>1 - Drive Power/Activity Terminal Header</p> <p>&lt;i&gt;(LEDs not included)&lt;/i&gt;</p>
----------------	---

---

**Environmental**

Operating Temperature	0C to 60C (32F to 140F)
Storage Temperature	-40C to 80C (-40F to 176F)
Humidity	20 ~ 80%

---

**Physical Characteristics**

Color	Red
Material	UL94 - V0
Max Drive Height	0.6 in [15 mm]
Product Length	6.1 in [15.4 cm]
Product Width	3.5 in [9.0 cm]
Product Height	0.1 in [1.5 mm]
Weight of Product	2.2 oz [62.0 g]

---

**Packaging Information**

Package Quantity	1
Package Length	6.1 in [15.5 cm]
Package Width	8.5 in [21.5 cm]
Package Height	1.2 in [3.0 cm]
Shipping (Package) Weight	4.6 oz [130.0 g]

---

**What's in the Box**

Included in Package	1 - U.3 to PCIe x4 Adapter
	4 - Drive Mounting Screws
	1 - Quick-Start Guide

---

*\*Product appearance and specifications are subject to change without notice.*