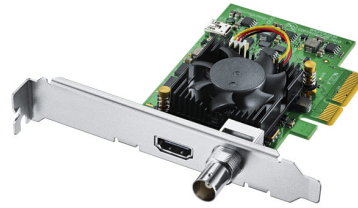


# DeckLink Mini Recorder 4K



DeckLink Mini Recorder 4K is a low profile PCI Express capture card, featuring 6G-SDI and the latest HDMI 2.0a connections so you can record all formats up to 2160p30 on your computer! The SDI and HDMI inputs automatically detect and switch between all video formats. You even get high dynamic range recording and metadata over HDMI. The DeckLink Mini Recorder 4K is perfect for integrating into mobile live capture environments, broadcast trucks and more! You can even develop your own custom capture solutions using the Blackmagic Desktop Video SDK for Mac OS, Windows and Linux! Includes two PCI Express shields for both full height and low profile slots.

## Connections

### SDI Video Inputs

1 x 10-bit SD/HD/Ultra HD switchable.

### HDMI Video Inputs

1 x HDMI 2.0a connector.

### Computer Interface

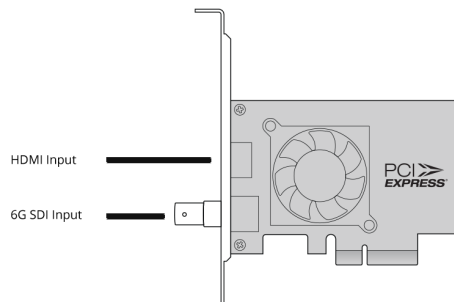
PCI Express 4 lane generation 2, compatible with 4, 8 and 16 lane PCI Express slots.

### SDI Audio Inputs

16 channels embedded in SD, HD, Ultra HD.

### HDMI Audio Inputs

8 Channels embedded in SD, HD, Ultra HD.



## Supported Codecs

AVC-Intra, AVCHD, Canon XF MPEG2, Digital SLR, DV-NTSC, DV-PAL, DVCPRO50, DVCPROHD, DPX, HDV, XDCAM EX, XDCAM HD, XDCAM HD422, DNxHR & DNxHD, Apple ProRes 4444, Apple ProRes 422 HQ, Apple ProRes 422, Apple ProRes LT, Apple ProRes 422 Proxy, Uncompressed 8-bit 4:2:2, Uncompressed 10-bit 4:2:2.

---

## Software

### Software Included

Media Express, Disk Speed Test, LiveKey, Blackmagic Desktop Video Utility and Blackmagic driver on Mac OS and Windows. Media Express, Blackmagic Desktop Video Utility and Blackmagic driver on Linux.

### Internal Software Upgrade

Firmware built into software driver. Loaded at system start or via updater software.

### Physical Installation

PCI Express 4 lane generation 2, compatible with 4, 8 and 16 lane PCI Express slots on Mac OS, Windows and Linux. Mac OS systems require a Mac Pro computer with PCI Express slots. Please check the Support pages to see the full system requirements.

---

## Software Applications



DaVinci Resolve



Adobe Premiere Pro CC



Avid Media Composer



Adobe Photoshop CC

**Other supported applications include:** Tools On Air Just: Play & Live & In, Softron MovieRecorder & MReplay, Adobe Flash Media Live Encoder, Telestream Wirecast, Livestream Producer, Resolume Arena, Magix Vegas Pro & Movie Edit Pro Premium, Corel VideoStudio Pro, CyberLink PowerDirector, Vidblaster X & Studio & Broadcast, Uniplay One & CG, CasparCG Server, Magicsoft CG, Xsplit Broadcaster, Imagine Communications Velocity & InfoCaster, DevTek Easy Media Suite, Metus Ingest, Boinx Software MimoLive, Cinegy Capture Pro, vMix Live, Renewed Vision ProPresenter, Ventuz Director, Class X Liveboard & Coral CG, Glookast Capturer, Open Broadcaster Software Studio, Nautilus NEMO3D.

---

## Video Standards

### SD Video Standards

525i59.94 NTSC, 625i50 PAL

### HD Video Standards

720p50, 720p59.94, 720p60  
1080p23.98, 1080p24, 1080p25,  
1080p29.97, 1080p30, 1080p50,  
1080p59.94, 1080p60  
1080PsF23.98, 1080PsF24, 1080PsF25,  
1080PsF29.97, 1080PsF30  
1080i50, 1080i59.94, 1080i60

### 2K Video Standards (SDI ONLY)

2K DCI 23.98p, 2K DCI 24p, 2K DCI 25p  
2K DCI 23.98PsF, 2K DCI 24PsF, 2K DCI  
F25PsF

### Ultra HD Video Standards

2160p23.98, 2160p24, 2160p25,  
2160p29.97, 2160p30

### 4K DCI Video Standards

4K DCI 23.98p, 4K DCI 24p, 4K DCI 25p\*  
\*SDI only.

### SDI Compliance

SMPTE 259M, SMPTE 292M, SMPTE  
296M, SMPTE 372M, SMPTE 425M,  
SMPTE 2081, ITU-R BT.656 and ITU-R  
BT.601.

### SDI Metadata Support

RP 188/SMPTE 12M-2 and closed  
captioning.

### Audio Sampling

Television standard sample rate of 48  
kHz and 24 bit.

### SDI Video Sampling

4:4:4 & 4:2:2

### SDI Color Precision

8, 10, 12-bit RGB 4:4:4 in all modes up  
to 1080p60, and 8, 10-bit YUV 4:2:2 in  
all modes.

### Color Space

REC 601, REC 709

### HDMI Video Sampling

4:4:4, 4:2:2 & 4:2:0

### HDMI Configuration

HDMI 2.0a supports Deep Color and  
HDR.

### HDMI Color Precision

Up to 12-bit (Deep Color)

### Multiple Rate Support

HDMI and SDI video connections are  
switchable between SD/HD/2K and  
4K.

### Copy Protection

HDMI input is unable to capture from  
copy protected HDMI sources. Always  
confirm copyright ownership before  
capture or distribution of content.

---

---

## Processing

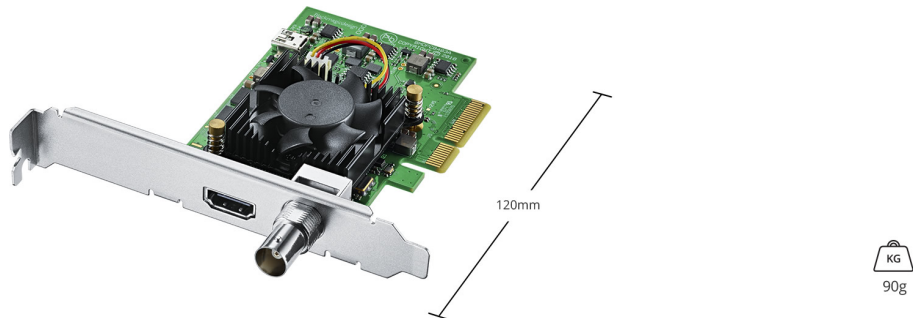
**Colorspace Conversion**  
Hardware based real time.

**HD to SD Down Conversion**  
Software based down conversion during video capture.

**HD Up Conversion**  
Software based up conversion from SD to HD on capture. Selectable between 4:3 pillarbox or 16:9 anamorphic.

---

## Physical Specifications



## Operating Systems



Mac OS X 10.11 El Capitan,  
macOS 10.12 Sierra,  
macOS 10.13 High Sierra

or later.



Windows 7, 8.1 and 10,  
all 64-bit.



Linux

---

## Power Requirements

**Power Consumption**  
8 Watts

---

## EMC Certifications

FCC, CE and C-Tick

---

## Environmental Specifications

**Operating temperature**  
5° to 40° C (32° to 104° F)

**Storage temperature**  
-20° to 45° C (-4° to 113° F)

**Relative Humidity**  
0% to 90% non-condensing

---

---

## What's Included

DeckLink Mini Recorder 4K  
Low profile slot bracket  
SD card with software and manual

---

## Warranty

3 Year Limited Manufacturer's Warranty.

---

All items on this website are copyright Blackmagic Design Pty. Ltd. 2017, all rights reserved.  
All trademarks are property of their respective owners. MSRP excludes sales taxes/duties and shipping costs.

Blackmagic Design Authorized Reseller