

1. Disassembly Procedures

S1 Turn off power

S2 To remove the stand

Place the monitor on U3415W Curve Sponge Jig

Press and hold the stand release button at the back of the display.

Lift the stand up and away from the monitor.



S3 Unlock 4 screws



(Screw Torque: 11±1Kgf)

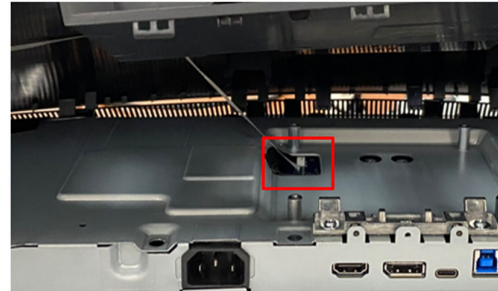
S4 Use hands or scraper bar to disassemble Rear Cover from the monitor.

Notice the disassembly order:

Left Side=> Top Side=>Right Side=>Bottom Side

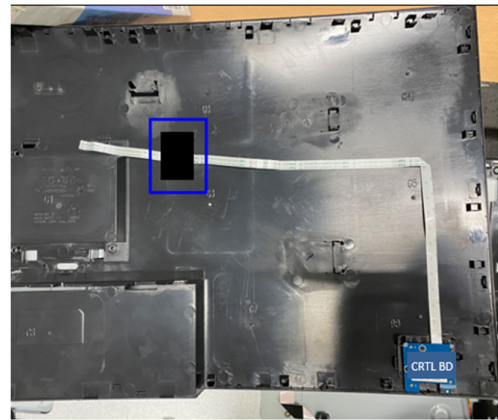


S5 Unplug "CTRL BD FFC" from I/F BD

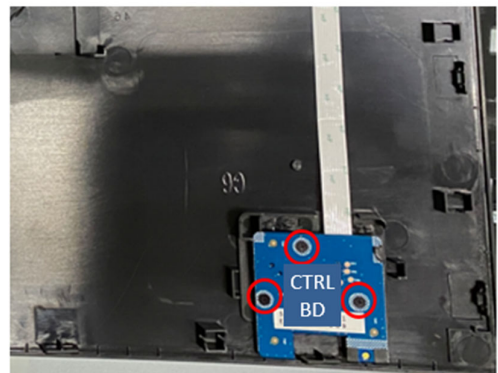


S6 Tear off 1 tape from "CTRL BD FFC"

Tear off "CTRL BD FFC" from Rear Cover



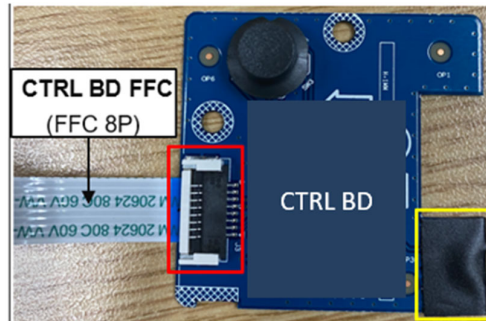
S7 Unlock 3 screws from CTRL BD and disassemble CTRL BD from Rear Cover



(Screw Torque: 1.5-2.0 Kgf)

- S8** Tear off Mylar from CTRL BD
(See yellow mark)

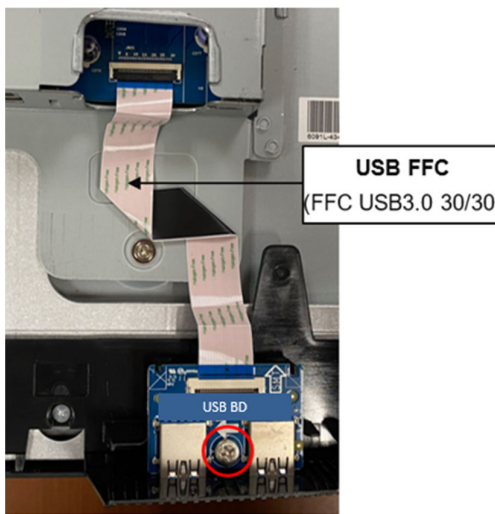
Unplug "CTRL BD FFC" from CTRL BD



- S9** Unplug USB FFC from I/F BD

Unlock 1 screw and disassemble USB BD from Middle Frame

Unplug USB FFC from USB BD



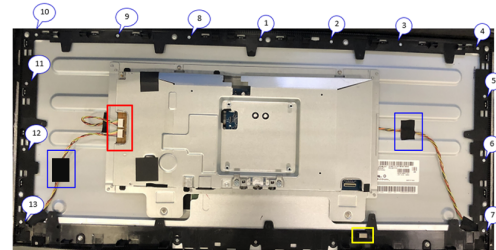
(Screw Torque: 4.0-4.5 Kgf)

- S10** Tear off a gasket from panel
(See yellow mark)

Tear off 2 tapes from backlight wires
(See blue mark)

Unplug backlight wires from LED Driver BD (See red mark)

Unlock 13 MF screws



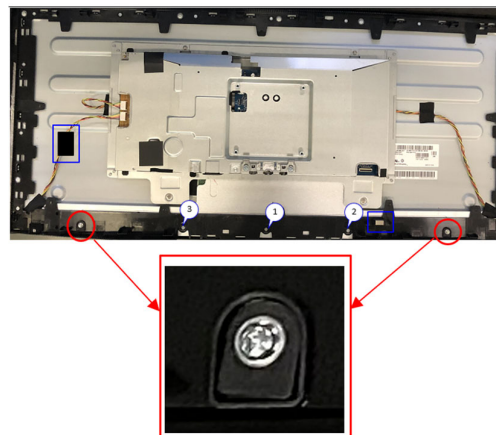
(Screw Torque: 4.0-4.5 Kgf)

- S11** Unlock 3 MF screws

Unlock 2 screws to disassemble "BOSS PANEL"
(see red mark)

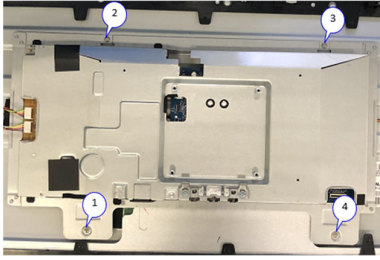
Disassemble 2 pieces of "BOSS PANEL" from panel
(see red mark)

Disassemble Middle Frame from panel



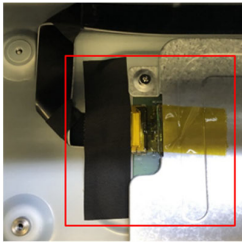
(Screw Torque: 4.0-4.5 Kgf)

- S12** Unlock 4 screws to disassemble Main SHD

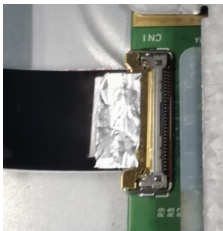


(Screw Torque: 4.0-4.5 Kgf)

- S13** Tear off 1 acetate tape and 1 yellow tape from EDP FFC



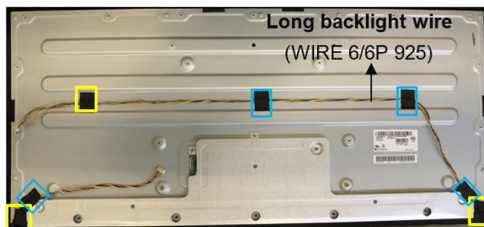
- S14** Unplug EDP FFC from panel
Take off Main SHD from Panel



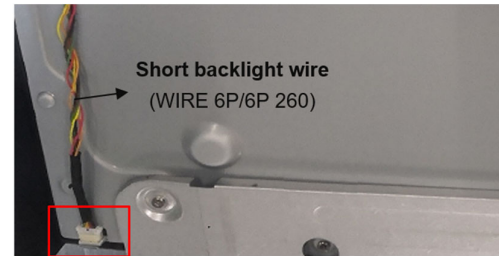
- S15** Tear off 3 tapes from backlight wire
(see yellow mark)

Tear off 4 tapes from backlight wire
(see blue mark)

Unplug long backlight wire from panel



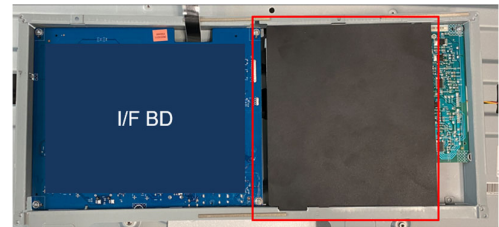
- S16** Unplug short backlight wire from panel



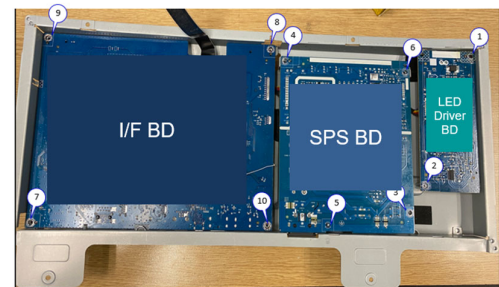
- S17** Tear off logo from panel



- S18** Disassemble Mylar from SHD



- S19** Unlock 10 PCBA screws

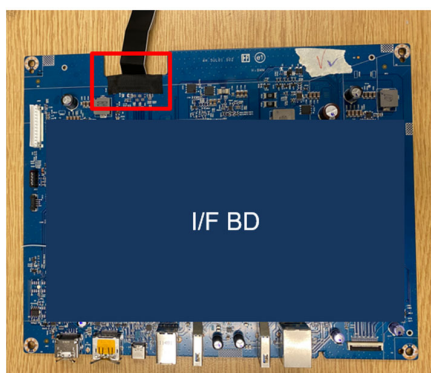
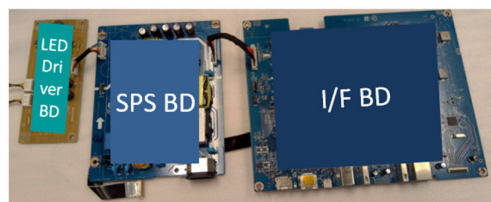
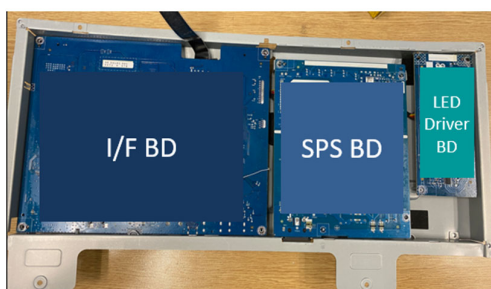


S20 Disassemble I/F BD from Main SHD and unplug SPS BD wire from I/F BD

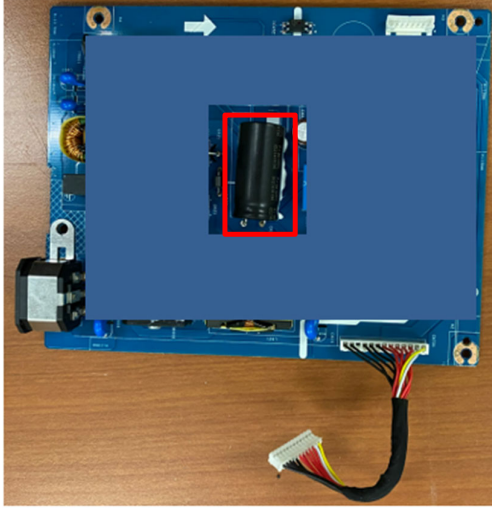
Tear off 1 tape from EDP FFC and unplug EDP FFC from I/F BD

Disassemble LED Driver BD from Main SHD and unplug "WIRE 8P/8P" from LED Driver BD

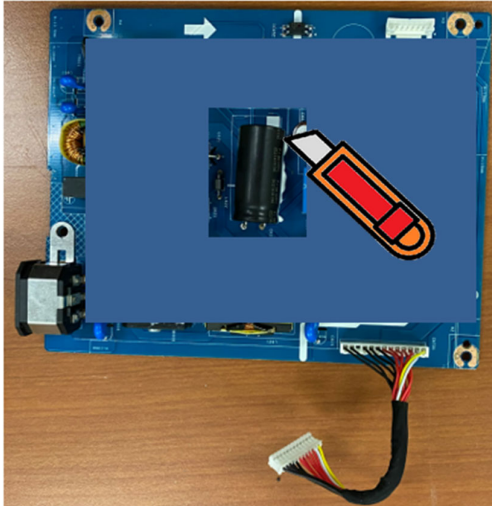
Disassemble SPS BD from Main SHD and unplug "WIRE 8P/8P" from SPS BD



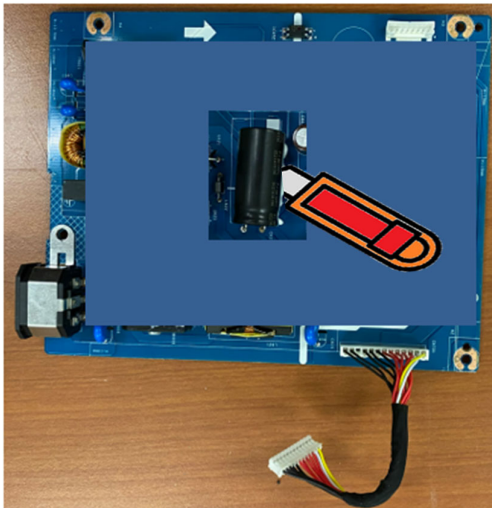
S21 Remove electrolyte capacitors (red mark) from printed circuit boards



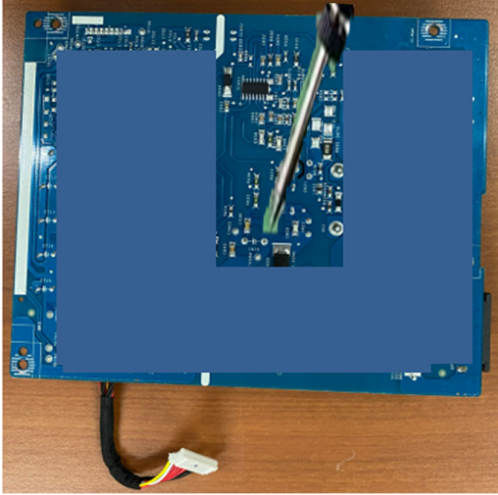
S21-1 Cut the glue between bulk cap. and PCB with a knife



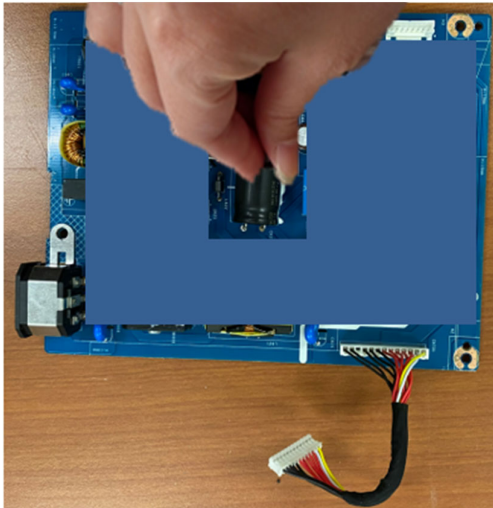
S21-2 Ensure cutting path within the glue, don't touch bulk cap. or PCB



S21-3 Take out bulk cap. pin solder with soldering iron and absorber



S21-4 Lift the bulk cap. up and away from the PCB



2. Product material information

The following substances, preparations, or components should be disposed of or recovered separately from other WEEE in compliance with Article 4 of EU Council Directive 75/442/EEC.

Capacitors / condensers (containing PCB/PCT)	No used
Mercury containing components	No used
Batteries	No used
Printed circuit boards (with a surface greater than 10 square cm)	Product has printed circuit boards (with a surface greater than 10 square cm)
Component contain toner, ink and liquids	No used
Plastic containing BFR	No used
Component and waste contain asbestos	No used
CRT	No used
Component contain CFC, HCFC, HFC and HC	No used
Gas discharge lamps	No used
LCD display > 100 cm ²	Product has an LCD greater than 100 cm ²
External electric cable	Product has external cables
Component contain refractory ceramic fibers	No used
Component contain radio-active substances	No used
Electrolyte capacitors (height > 25mm, diameter > 25mm)	Product has electrolyte capacitors (height >25mm, diameter > 25mm)

3. Tools Required

List the type and size of the tools that would typically can be used to disassemble the product to a point where components and materials requiring selective treatment can be removed.

Tool Description:

- Philips-head Screwdriver
- Penknife
- Bar scraper
- U3415W Curve Sponge Jig