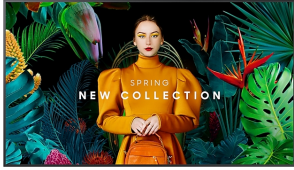


Samsung LH65QMCEBGXEN Signage Display Digital signage flat panel 165.1 cm (65") LCD Wi-Fi 500 cd/m² 4K Ultra HD Black Tizen

Brand : Samsung

Product code: LH65QMCEBGXEN

Product name : LH65QMCEBGXEN



- Ultra Slim Depth
- Even Bezel
- Centered VESA Holes

Crystal UHD Signage QMC 65", 3840 x 2160 VA, 3 x HDMI, 1 x DisplayPort, Ethernet, Wi-Fi, Bluetooth
 Samsung LH65QMCEBGXEN. Product design: Digital signage flat panel. Display diagonal: 165.1 cm (65"), Display technology: LCD, Display resolution: 3840 x 2160 pixels, Display brightness: 500 cd/m², HD type: 4K Ultra HD. Wi-Fi. Operating system installed: Tizen. Product colour: Black



Display		Design	
Panel type	VA	Bezel width (top)	1.15 cm
Display diagonal *	165.1 cm (65")	Anti-glare screen	✓
Display technology *	LCD	Mounting type	Wall
Display resolution *	3840 x 2160 pixels	Performance	
Display brightness *	500 cd/m ²	Purpose *	Commercial
HD type *	4K Ultra HD	HDCP	✓
Touchscreen *	✗	HDCP version	2.2
Response time	8 ms	Power	
Contrast ratio (typical)	4000:1	Power consumption (typical) *	187 W
Dynamic contrast ratio marketing name	Mega Contrast	Power consumption (standby) *	0.5 W
Viewing angle, horizontal	178°	Energy efficiency class (SDR)	G
Viewing angle, vertical	178°	Energy consumption (SDR) per 1000 hours	135 kWh
Pixel pitch	0.372 x 0.372 mm	AC input voltage	100 - 240 V
Frame width	11.5 mm	AC input frequency	50/60 Hz
Horizontal scan range	30 - 81 kHz	Computer system	
Vertical scan range	48 - 75 Hz	Internal memory	16 GB
Haze rate	25%	Operating system installed	Tizen
RGB colour space	NTSC	Operating system version	7.0
Ports & interfaces		Weight & dimensions	
HDMI ports quantity *	3	Display width	1456.8 mm
HDMI version	2.0	Display depth	28.5 mm
DVI port *	✗	Display height	831.9 mm
DisplayPorts quantity *	1	Display weight	21.5 kg
DisplayPorts in	1	Packaging data	
USB port *	✓	Package width	1616 mm
USB ports quantity	2	Package depth	164 mm
Ethernet LAN *	✓	Package height	945 mm
Ethernet LAN (RJ-45) ports	1	Package weight	28.6 kg
Wi-Fi *	✓		
RS-232 interface	✓		
Infrared data port	✓		
Remote (IR) input	1		

Design		Operational conditions	
Product design *	Digital signage flat panel	Operating temperature (T-T)	0 - 40 °C
Placement supported *	Indoor	Operating relative humidity (H-H)	10 - 80%
Orientation	Horizontal/Vertical	Certificates	
Product colour *	Black	Certification	60950-1, 62368-1
Screen shape	Flat	Features	
VESA mounting *	✓	Suitable for indoor use	✓
Panel mounting interface	400 x 300 mm	Wall mountable	✓
Bezel width (bottom)	1.15 cm	Technical details	
Bezel width (side)	1.15 cm	Sustainability compliance	✓
		Sustainability certificates	CE, ENERGY STAR, EPEAT Bronze, TUV
		Other features	
		Bluetooth	✓



8806094973945

Disclaimer. The information published here (the "Information") is based on sources that can be considered reliable, typically the manufacturer, but this Information is provided "AS IS" and without guarantee of correctness or completeness. The Information is only indicative and can be changed at any time without notification. No rights can be based on the Information. Suppliers or aggregators of this Information do not accept any liability with regard to the content of (web)pages and other documents, including its Information. The publisher of the Information can not be held liable for the content of 3rd party websites that are linking this Information or are linked to from this Information. You as the User of the Information are solely responsible for the choice and usage of this Information. You are not entitled to transfer, copy or otherwise multiply or distribute the Information. You are obliged to follow the directions of the copyright owner(s) with regard to the use of the Information. Exclusively Dutch law is applicable. With regard to price and stock data on the site, the publisher followed a number of starting points, which are not necessarily relevant for your private or business circumstances. Therefore, the price and stock data are only indicative and are subject to changes. You are personally responsible for the way you use and apply this information. As a user of the Information or sites or documents in which this Information is included, you will adhere to standard fair use including avoidance of spamming, ripping, intellectual-property violations, privacy violations, and any other illegal activity.

Publication date: 07-MAY-2024. Prints or copies of Information are only valid on the printed Publication date