

# *Help Guide*

## **Driver Download:**

<https://plustek.com/us/products/film-photo-scanners/opticfilm-135i/support.php>

**Please contact us directly if you have any questions**

**Tel: (714) 670-7713, Mon-Fri 9:00AM~5:30PM, PST**

**eMail: [infoUSA@plustekus.com](mailto:infoUSA@plustekus.com)**

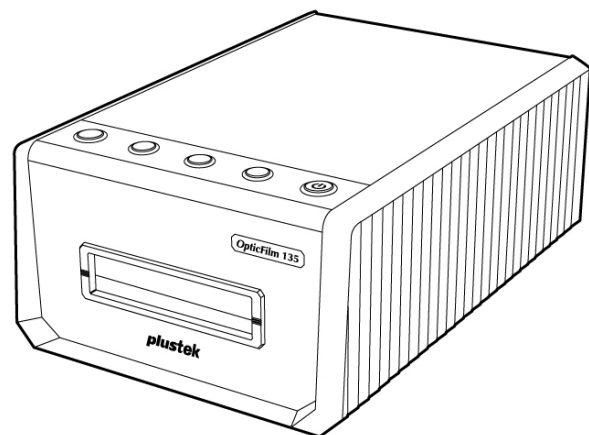
**Or fill out a technical support form at**

**<https://plustek.com/usa/support/technical-support-form.html>**

**plustek**

# Scanner User's Guide

## OpticFilm 135/135i



## **Trademarks**

© 2020 Plustek Inc. All rights are reserved. No portion of this document may be reproduced without permission.

All trademarks and brand names mentioned in this publication are property of their respective owners.

## **Liability**

While all efforts have been made to ensure the accuracy of all contents in this manual, we assume no liability for errors or omissions or by statements of any kind in this manual, whether such errors are omissions or statements resulting from negligence, accidents, or any other cause. The contents of this manual are subject to change without notice. We will not shoulder any legal liability, if users failed to follow the operation instructions in this manual.

## **Copyright**

The scanning of certain documents, for example checks, bank notes, I.D. cards, government bonds, or public documents, may be prohibited by law and/or subject to criminal prosecution. We recommend you to be responsible and respectful of the copyrights laws when you are scanning books, magazines, journals and other materials.

## **Environmental Information**

Recycle or disposal at end-of-life information, please ask local distributors or suppliers for recycle and disposal information. The product is designed and produced to achieve sustainable environmental improvement. We strive to produce products in compliance with global environmental standards. Please consult your local authorities for proper disposal.

The product packaging is recyclable.

Attention for recycling (For EU country only)

Protect your environment! This product should not be thrown into the household waste container. Please give it to the free collecting center in your community.

## **Screen Examples in This Manual**

The screen shots in this guide were made with Windows 7. If you are using Windows 8 / 10, your screen will look somewhat different but functions the same.

# Table of Contents

<b>INTRODUCTION</b> .....	<b>1</b>
A NOTE ABOUT ICONS .....	1
<b>SAFETY PRECAUTIONS</b> .....	<b>2</b>
MAINTENANCE.....	3
<b>PRODUCT OVERVIEW</b> .....	<b>4</b>
BOX CONTENTS .....	4
SCANNER OVERVIEW .....	5
<b>BEFORE INSTALLING THE SCANNER</b> .....	<b>6</b>
CONNECTING THE SCANNER TO YOUR COMPUTER .....	6
LED INDICATOR .....	7
POWER SAVE .....	7
<b>INSTALLING THE SCANNER</b> .....	<b>8</b>
WINDOWS INSTALLATION.....	8
MAC OS X INSTALLATION .....	10
<b>FILM HOLDERS</b> .....	<b>11</b>
USING 35MM MOUNTED FILM HOLDER .....	11
USING 35MM STRIP FILM HOLDER .....	11
INSERT THE FILM HOLDER.....	12
<b>SCAN WITH QUICKSCAN PLUS APPLICATION</b> .....	<b>13</b>
PREFERENCE SETTINGS.....	13
THE SCAN SCREEN .....	15
THE EDIT SCREEN .....	17
EJECT THE FILM HOLDER .....	17
<b>APPENDIX A: TROUBLESHOOTING</b> .....	<b>18</b>
SCANNER CONNECTION.....	18
SCANNING PROBLEMS .....	18
FAQ .....	21
<b>APPENDIX B: SPECIFICATIONS</b> .....	<b>23</b>
<b>APPENDIX C: CUSTOMER SERVICE AND WARRANTY</b> .....	<b>24</b>
SERVICE & SUPPORT INFORMATION (FOR EU COUNTRY ONLY) .....	25
STATEMENT OF LIMITED WARRANTY .....	25
FCC RADIO FREQUENCY STATEMENT .....	26

# Introduction

Welcome to the world of Plustek scanners – the ultimate in computer imaging. Your new scanner will improve the professionalism of your day-to-day computing tasks by allowing you to input images into your computer system.




Like all of our products, your new scanner is thoroughly tested and backed by our reputation for unsurpassed dependability and customer satisfaction.

Thank you for choosing us as your scanner supplier. We hope you will continue to turn to us for additional quality products as your computing needs and interests grow.

## A Note about Icons

---

This guide uses the following icons to point out information that deserves special attention.

 <b>Warning</b>	<b>Warning:</b> A procedure that must be followed carefully to prevent injury, or accidents.
 <b>Attention</b>	<b>Attention:</b> Instructions that are important to remember and may prevent mistakes.
 <b>Information</b>	<b>Information:</b> Optional tips for your reference.

# Safety Precautions

Before using this device, please read the following important information to eliminate or reduce any possibility of causing damage and personal injury.

1. Usage, the product is for indoor use in dry locations. Moisture condensation may occur inside this device and cause malfunction at these conditions:
  - when this device is moved directly from a cold to a warm location;
  - after a cold room is heated;
  - when this device is placed in a damp room.

To avoid the moisture condensation, you are recommended to follow the procedure:

- i. Seal this device in a plastic bag for it to adapt to room conditions.
  - ii. Wait for 1-2 hours before removing this device from the bag.
2. Do use the power adapter and USB cable provided with the scanner. Use of other power adapter and cables may lead to malfunction.
3. Keep the space around the AC adapter clear in case you need to quickly unplug the AC adapter during emergencies.
4. Damaged wire could cause fire or electrical shock. Keep the power cord straight and without being twisted, bended, or scraped.
5. Unplug this device if you don't need to use for a certain period of time, such as, during night or long weekend, to avoid any risks of causing fire.
6. Do not attempt to disassemble the scanner. There is danger of an electrical shock and opening your scanner will void your warranty.
7. Be sure not to bump or knock the scanner as it is fragile and could break.
8. Before installing the device drivers, please disconnect all other imaging devices (other scanners, printers, digital cameras, web cameras) from the PC.
9. Save the Setup/Application CD. You may need to reinstall the driver and software in the future.
10. Please make sure your hands are clean before handling slides and negatives. If there is dust on your film material, please clean it by blowing it off or wiping with non-abrasive cloth.
11. Please keep your slides and negatives in a cool, dry place out of direct sunlight. Handle with care as improper storage and handling can lead to deterioration and ultimately affect your scan results.

## Maintenance

---



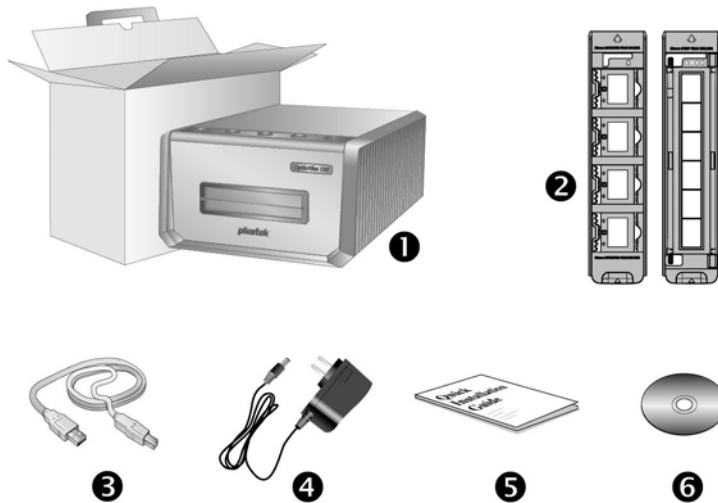
### Information

To keep your scanner working smoothly, take a moment to review the following maintenance tips.

- ⚠️ Avoid using the scanner in a dusty environment. When it is not in use, keep the scanner covered. Dust particles and other foreign objects may damage the unit.
- ⚠️ Do not attempt to disassemble the scanner. There is danger of an electrical shock and opening your scanner will void your warranty.
- ⚠️ Do not subject the scanner to excessive vibration. It may damage the internal components.
- ⚠️ Your scanner operates best in temperatures between 10° C to 40° C (50° F to 104° F).

# Product Overview

## Box Contents<sup>1</sup>



1. Scanner
2. Mounted Film Holder and Filmstrip Holder
  - A. For scanning 35mm mounted films (max. 4)
  - B. For scanning 35mm filmstrip (max. 6 frames)
3. USB Cable
4. Power Adapter
5. Quick Guide
6. Plustek Setup / Application CD-ROM

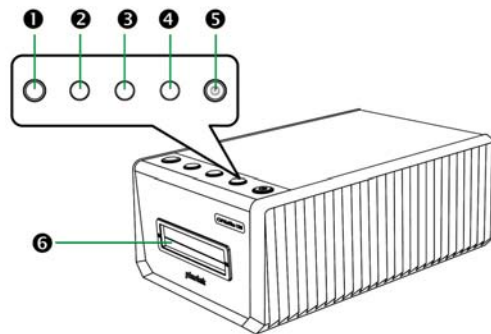
---

<sup>1</sup> Save the box and packing materials in case you need to transport this scanner in the future.  
Box contents may change at any time without prior notice.

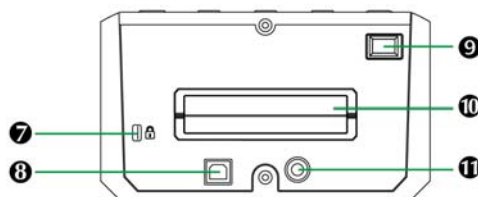


## Scanner Overview

---



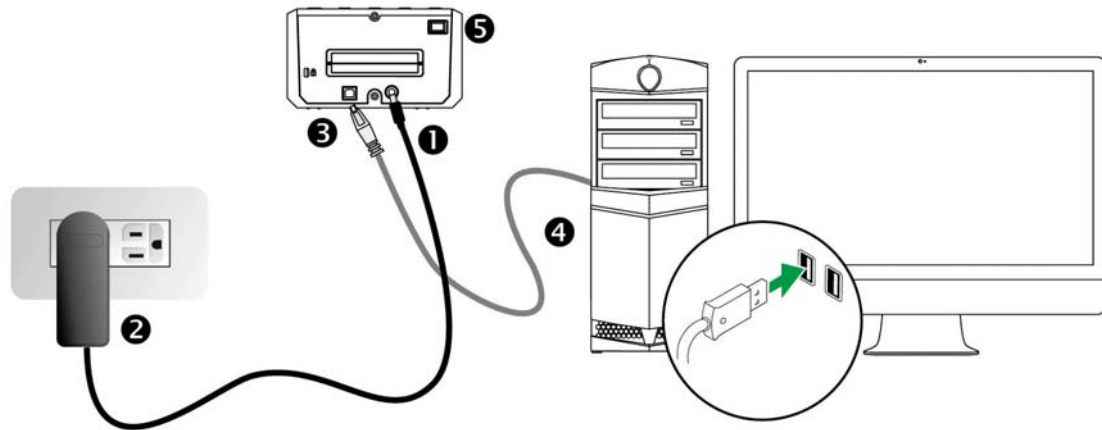
- 1. Eject Button (with indicator light)**  
Press this button to eject the currently inserted film holder.
- 2. Positive Button**  
Press this button to scan positive source material with the currently defined settings.
- 3. Negative Button**  
Press this button to scan negative source material with the currently defined settings.
- 4. Custom Button**  
Press this button to perform a custom scan with the currently defined settings.
- 5. Power Saving Button (with indicator light)**  
Press the button to wake the scanner up from sleep mode. Press and hold the button for 2 seconds to put the scanner into sleep mode.
- 6. Front Film Holder Slot**  
Insert the film holder into the scanner through the dust cover.



- 7. Kensington Security Slot**  
Used for attaching lock-and-cable apparatuses to prevent device theft.
- 8. USB Port**  
It connects the scanner to a USB port on your computer by the included USB cable.
- 9. Power switch**  
Use this to turn the scanner ON or OFF.
- 10. Rear Film Holder Slot**  
Please leave about 15 cm in the back of the scanner to allow the film holder to go through.
- 11. Power Receptor**  
It connects the scanner to a standard AC power outlet by the included power adapter.

# Before Installing the Scanner

## Connecting the Scanner to Your Computer



1. Plug the power adapter into the scanner's power receptor.
2. Plug the other end of the power adapter into a standard AC power outlet.
3. Plug the square end of the included USB cable to the USB port at the rear of the scanner.
4. Plug the rectangular end of the USB cable to the USB port on the back of your computer.
5. Switch the scanner power on.

## LED Indicator

---

The Power Saving button LED and Eject button LED indicate different scanner status.

Eject button LED	Power Saving button LED	Status
Off	Blue	The scanner is turned on and operating normally, no film holder has been inserted.
Blue	Blue	The film holder has been inserted and the scanner is ready to scan.
Blue	Blinking Blue	The film holder is being scanned.
Orange	Blue	The film holder has been ejected and can be removed, or the film holder cannot be inserted because there is no USB connection.
Off	Orange	The scanner is in sleep mode.
Off	Off	The scanner is off, either because the power is not turned on, or because the AC adapter is not properly plugged into an AC power outlet.

## Power Save

---

To save power consumption, the scanner light source always automatically turns itself off after the scanning process is finished. The scanner will enter the sleep mode after it is idle for a few minutes. Simply press any button on the scanner and the scanner will return to the normal status. You can adjust the idle time to set when the scanner will enter the sleep mode through the QuickScan Plus application.

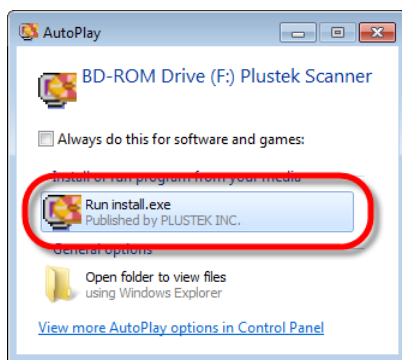
# Installing the Scanner

Please follow the step-by-step procedures described below to install the USB scanner.

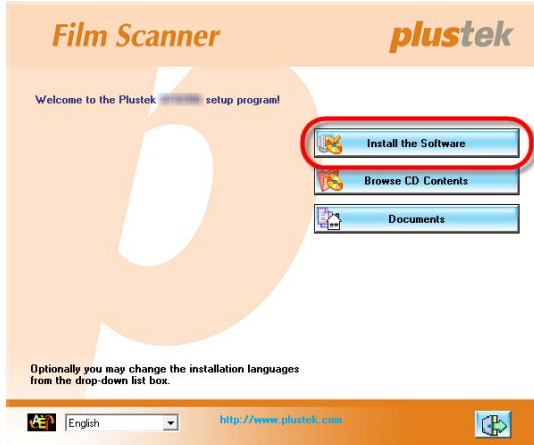
Insert the Setup/Application CD-ROM, included with your scanner, into your CD-ROM drive.

Or you may find the latest driver on our official website [www.plustek.com](http://www.plustek.com) -> Support & Download -> Drivers and Downloads

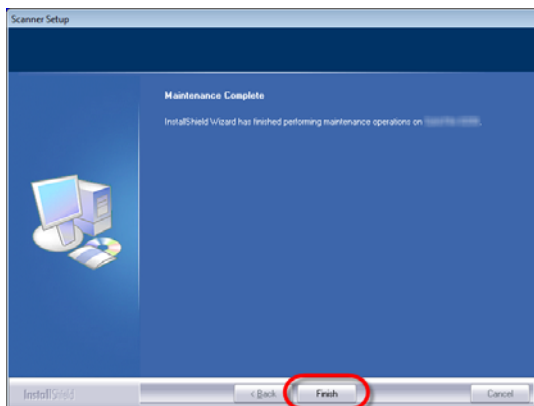
## Windows Installation



1. Click [Run install.exe] in the [AutoPlay] window. If the installation does not start automatically, browse your CD-ROM drive and manually run the [install.exe] file. Click on the [Yes] button if the [User Account Control] dialog pops up.



2. Follow the on-screen instructions to install all software that your new USB scanner requires.



3. After the software is installed, close all open applications and click on the [Finish] button to restart your computer.



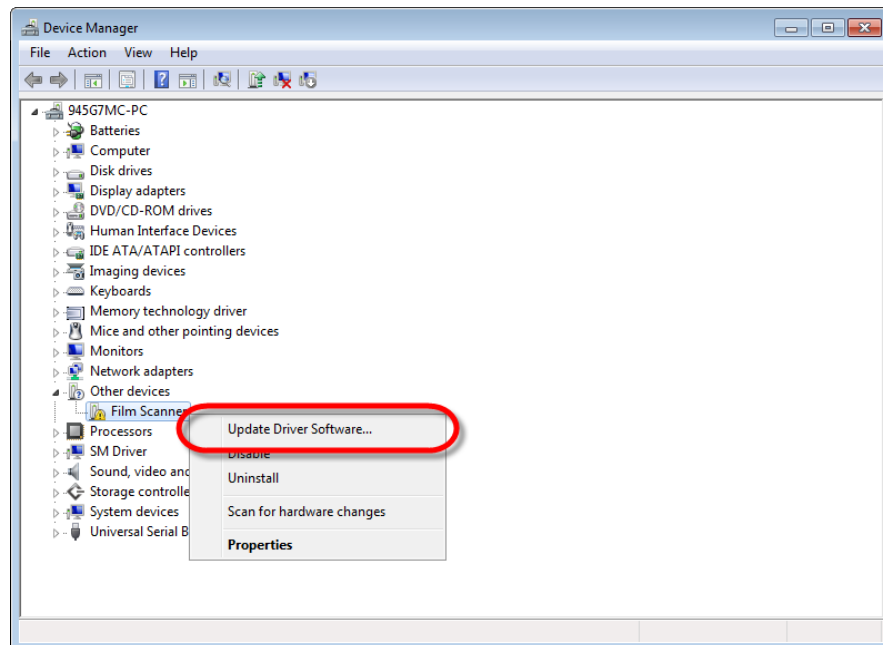
### Attention

For Windows 8 / 10, please follow the on-screen installation instructions after connecting the scanner.

### For Windows OS:

**If you are facing difficulty in installing the scanner driver, please try manually installing the software.**

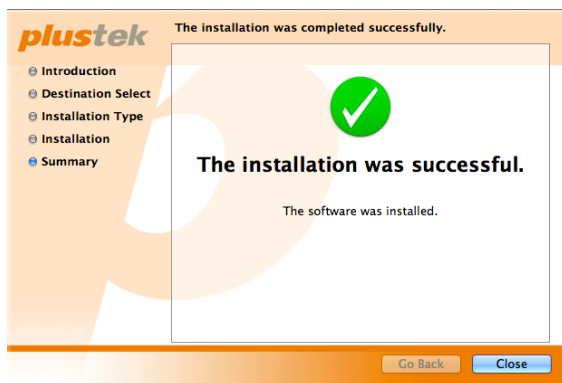
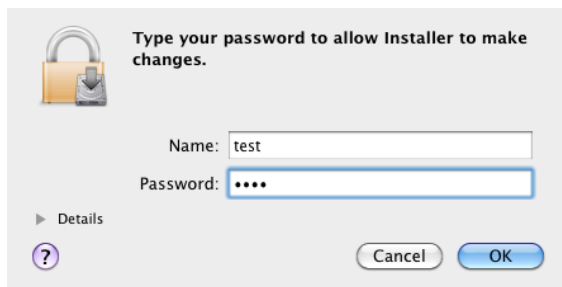
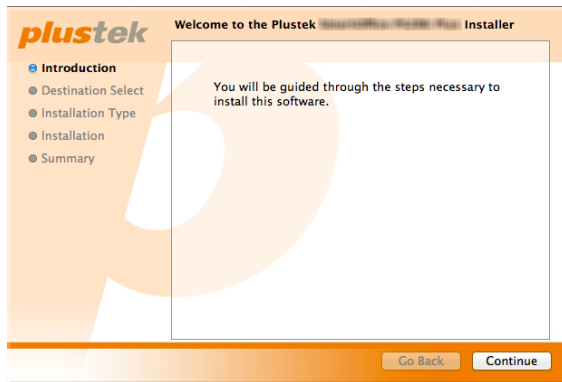
1. Please open [Start] > [Control Panel] > [System] > [Hardware] > [Device Manager]. In the [Device Manager] window, right-click on this scanner under [Other devices] and select [Update Driver Software] from the pop-up menu.




### Information

2. Click [Browse my computer for driver software] in the window that appears, and click the [Browse] button. In the [Browse For Folder] window, select the folder or the CD-ROM drive that contains this scanner's driver and click the [OK] button to return to the previous screen. Click the [Next] button and click [Install this driver software anyway] if the [Windows Security] window appears.
3. Browse your CD-ROM drive and manually run the [install.exe] file. Click on the [Yes] button if the [User Account Control] dialog pops up. Follow the on-screen instructions to install all software that your new USB scanner requires.

# Mac OS X Installation



1. Double-click on the setup file [Plustek Film Scanner] , and the Scanner Installer will start to guide you through the installation. Follow the on-screen guide in the installer window.
2. You will be prompted to enter your Mac administrator password in the way. Enter the password to continue the installation. **Note: Only the Mac administrator can perform the installation. Please make sure that you log in the Mac OS as an administrator.**
3. When the installation finishes, click on [Close] to exit the installer.

## Film Holders

2 film holders are included in the package. They guarantee correct scanning results.



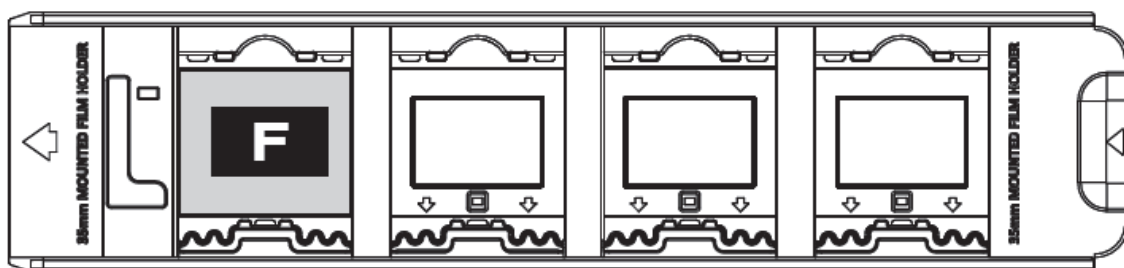
### Information

- ◆ The scanner automatically detects the type of film holder you have inserted and will automatically define the crop areas according to the film holder.
- ◆ These 2 film holders can be used for both positive and negative source material, you just have to select the responding button to scan.

### Using 35mm Mounted Film Holder

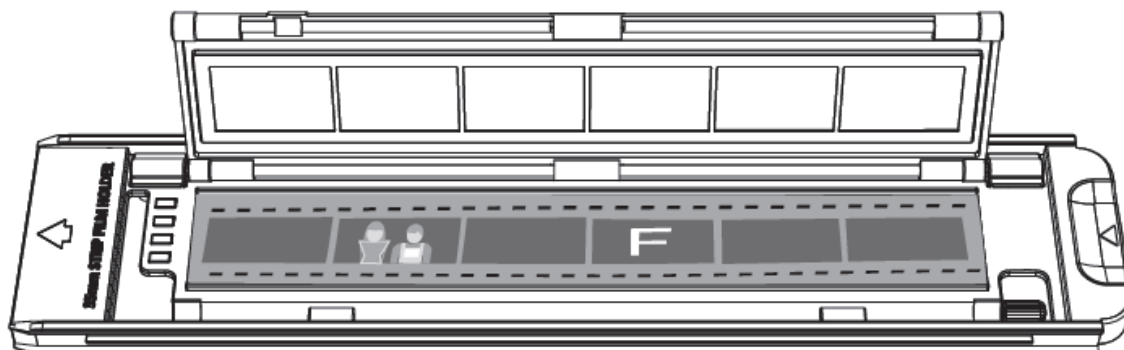
Insert mounted film into slots with emulsion (non-glossy) side down.

There are arrows and illustrations on the frame of each slot. Please follow the illustrations to insert the mounted film.



### Using 35mm Strip Film Holder

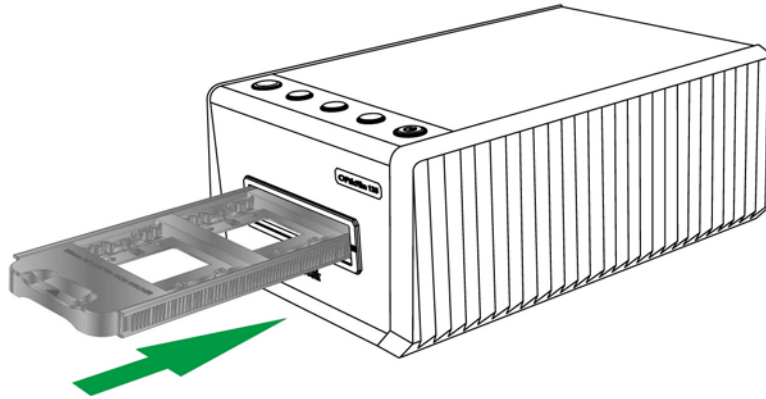
Open the film holder and place the filmstrip in the film holder with the emulsion (non-glossy) side down, then close the film holder cover. Always align the film towards the direction of insertion. The direction of insertion is indicated by an arrow.



## Insert the Film Holder

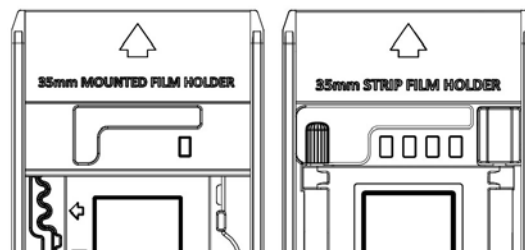
Insert the film holder into the scanner through the Front Film Holder Slot until it is automatically pulled in by the scanner. The scanner will not pull in the film holder if the USB cable is disconnected.

Please allow about 35 cm in front of the scanner to insert and remove the film holder.



**Attention**

- ⚠ The film holder should be able to be inserted into the scanner smoothly. Do not push the film holder hard.
- ⚠ On the top side of the film holder you can see '35 mm Mounted Film Holder' or '35 mm Strip Film Holder'. Always keep this side up for correct scan results.



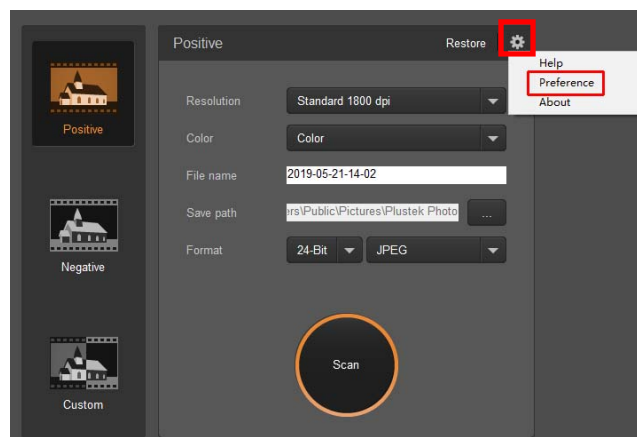


# Scan with QuickScan Plus Application

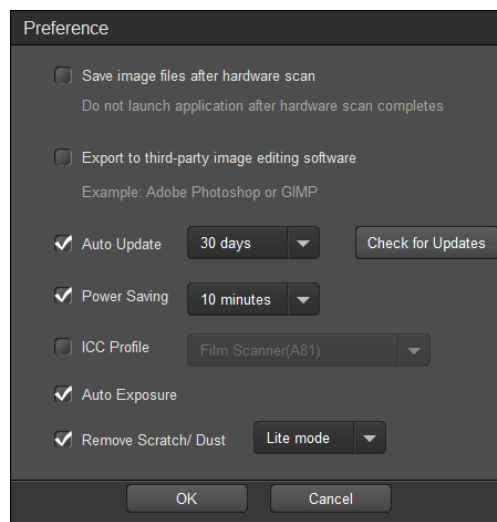
Launch QuickScan Plus using the QuickScan Plus shortcut on your Desktop. Adjust the scan settings. Please refer to the QuickScan Plus on-line help for more information about available scan settings.



## Preference Settings



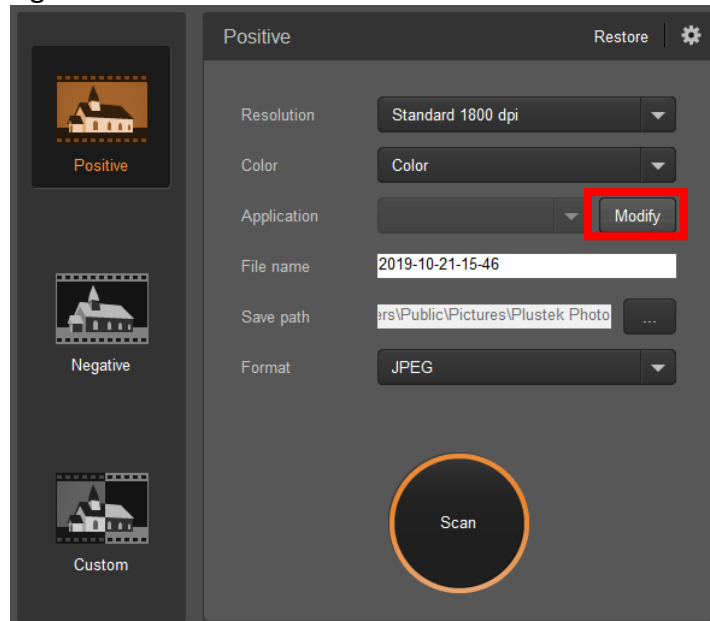
Click on  button and select **Preference** to open the **Preference** settings dialog.



- **Save image files after hardware scan:** Activate this checkbox if you do not want the QuickScan Plus program to launch after scanning images.
- **Export to third-party image editing software:** Activate this checkbox to export the scanned images to third-party image editing software for further editing. The scanned images will be opened directly on third-party image editing software.

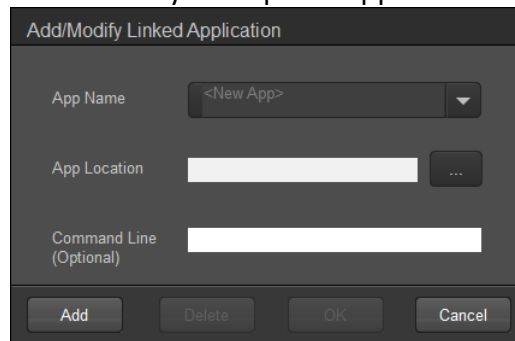
Note: The negative film scanned images will be exported to third-party image editing software without any image processing.

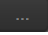
If you activate this checkbox, the main window will appear as following:



**Information**

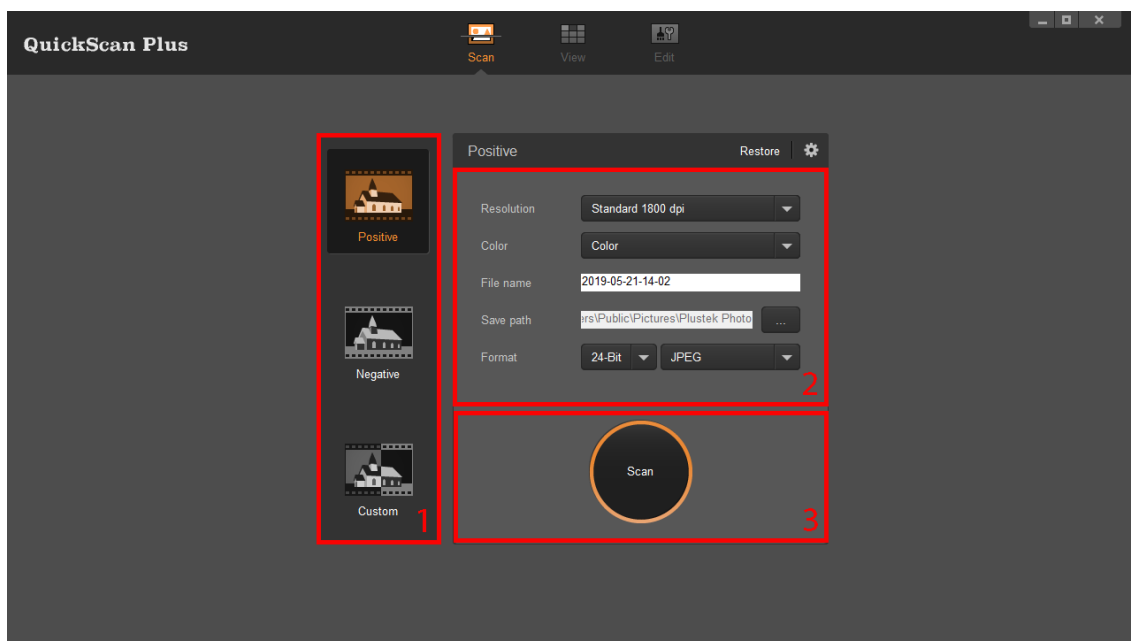
Click the **Modify** button to add desired applications, for example: Photoshop, GIMP. You may add up to 5 applications.



- **App Name:** Enter the application name.
- **App Location:** Click on the  button to browse to the desired program folder and select the executable file (\*.exe) of the desired application.
- **Command Line (Optional):** It is recommended that you leave this field blank if you will not use or are unsure of the command line.

- **Auto Update:** Activate this checkbox and select a value from the drop-down list to set how often this program should automatically check for updates. Click the **Check for Updates** button to check if there is any update.
- **Power Saving:** Activate this checkbox and select a value from the drop-down list to set when the scanner will enter power saving mode. Simply press on any of the scanner 's physical buttons to wake it.
- **ICC Profile:** Activate this checkbox and select a profile from the drop-down list to set device output color standard.
- **Auto Exposure:** Activate this checkbox to perform auto exposure.
- **Remove Scratch/ Dust:** Activate this checkbox and select a desired mode from the drop-down list to remove scratch/dust. This function is only for the infrared built-in model.

## The Scan Screen

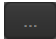


The **Scan** screen is where you set your scanning parameters. These scanning parameters will also be used when you initiate a scan using the physical buttons on your scanner.

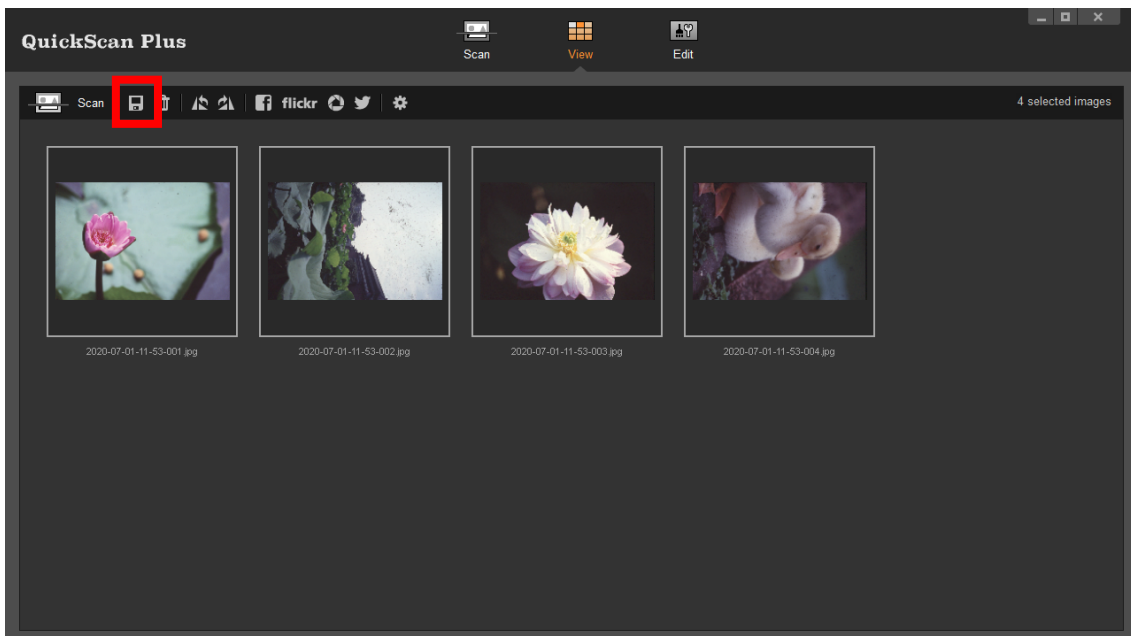
- **Scan mode:** Selected by clicking on the respective button on the left side, you can choose between **Positive**, **Negative** and **Custom**. Basically this allows you to create 3 scan profiles; one for positives, one for negatives and one for either positives or negatives.
- **Resolution:** Select a desired resolution from the drop-down list. The higher the resolution, the more detailed the scan and the resulting file will be.

Resolution	Windows & Mac
------------	---------------

7200 dpi*	Approx. 9000 x 6200 dots
3600 dpi	Approx. 4500 x 3100 dots
2400 dpi	Approx. 3000 x 2000 dots
1800 dpi	Approx. 2250 x 1500 dots
1200 dpi	Approx. 1500 x 1000 dots
600 dpi	Approx. 750 x 500 dots
* 7200 dpi is only available for Windows 64-bit operating system.	

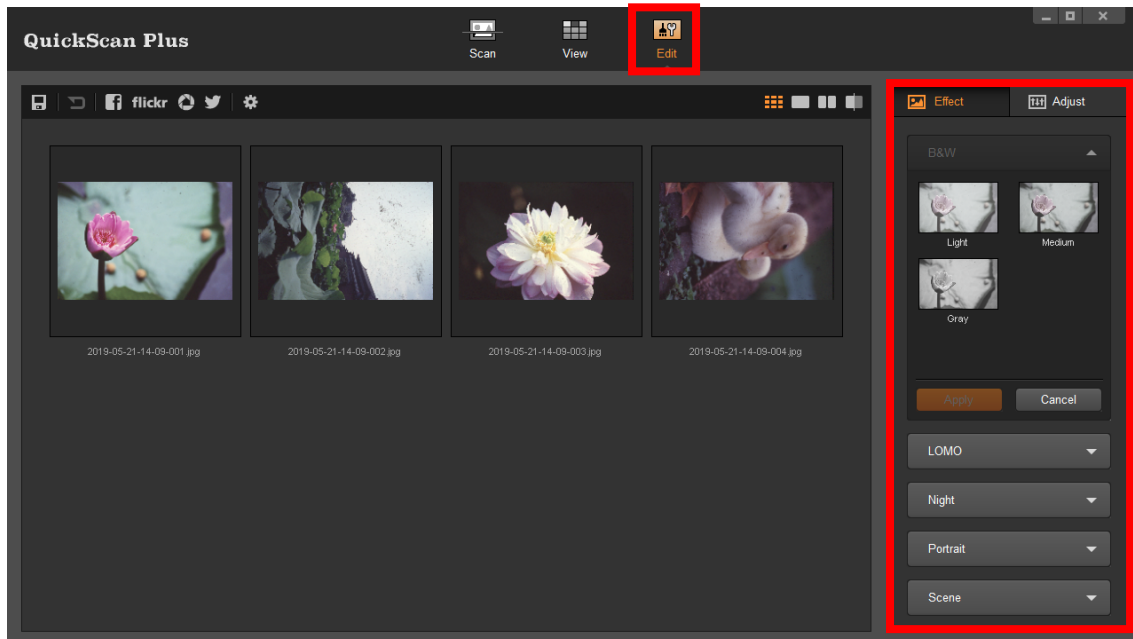
- **Color:** Select a desired color mode from the drop-down list.
- **File name:** Enter the desired file name into the field. The default uses your computer's date and time.
- **Save path:** Click on the **Browse** button  and use the dialog to select the folder where you wish to store your scanned images. For example, the default saving path in Windows 7 is **Users > Public > Public Pictures > Plustek Photo**.
- **Format:** Select the desired bit rate and file format you wish to use from the drop-down lists. The higher the bit rate, the more detailed the scan and the larger the resulting file will be. Available format options are: **JPEG, TIFF, PNG, Windows Bitmap**.
- **Scan:** Insert your film tray and click on the **Scan** button when you are ready to scan.

After the scan is completed, the **View** screen will be shown. Click on the **Save** button, your images are already saved and can be found in the folder you set under **Save path** on the **Scan** screen.



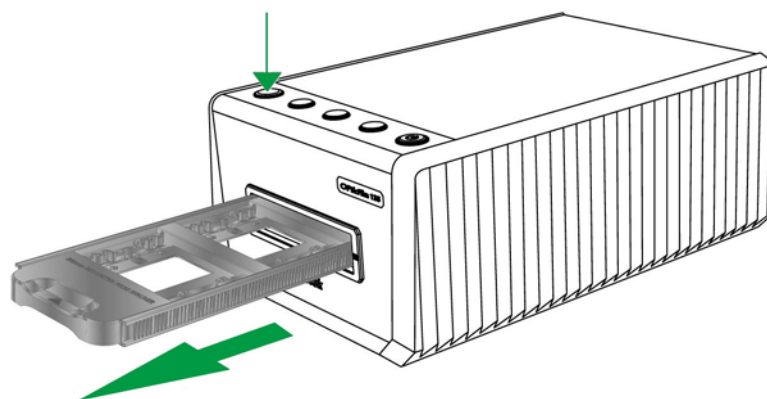
## The Edit Screen

You may select one or multiple images to delete, rotate or share at the same time. Selected images will be highlighted with a gray rectangle around the images. Simply click an image to remove a picture from your selection. Click on the **Edit** button above the frames to switch to the **Edit** screen to apply various filter effects and make more detailed adjustments to your images.



## Eject the Film Holder

Press the **Eject** button to eject the currently inserted film holder.



# Appendix A: Troubleshooting

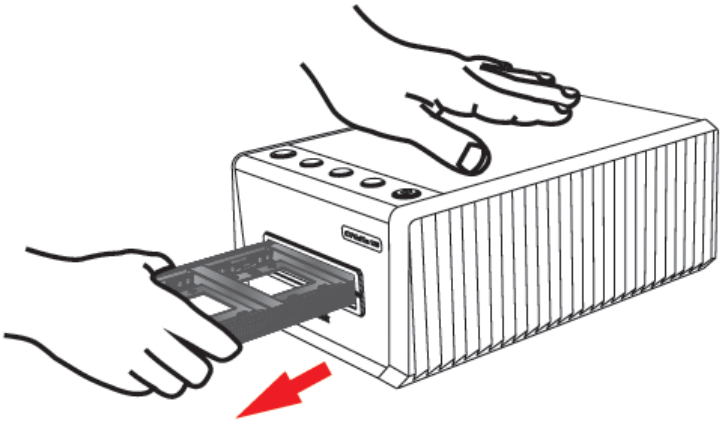
## Scanner Connection

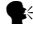
The first step to take when troubleshooting connection problems with your scanner is to check all physical connections.

## Scanning Problems

Most problems are easily solved, and some of the most common questions and their recommended solutions are listed below.

Symptom		Cause & Solution
1.	The scanner cannot be found	<ul style="list-style-type: none"><li>💡 <b>The USB cables are not connected properly</b> Make sure that the cables are connected tightly and to the proper port.</li><li>💡 <b>The USB cable might be too long</b> Please use the USB cable that comes with your scanner.</li><li>💡 <b>The scanner's power cord is not connected properly</b> Make sure that the AC adapter is connected to an outlet. If the scanner is connected to a Surge Protector, make sure that the Surge Protector is turned on.</li><li>💡 <b>Windows didn't detect the scanner</b> 1) Please open [Start] &gt; [Control Panel] &gt; [System] &gt; [Hardware] &gt; [Device Manager]. 2) Please check if your scanner is properly listed under [Imaging Devices]. If it is not listed there or the device icon has an exclamation mark, please refer to "<b>Manually Installing the Software</b>" to install the device drivers.</li></ul>
2.	The scanned film appears abnormal	<ul style="list-style-type: none"><li>💡 <b>The scanner or the surface it is placed on was bumped into during the scanning process</b> Please press the Eject button on your scanner to eject the film holder, then reinsert the film holder. Please scan the film again and make sure the scanner or the surface it is placed on is not bumped into.</li></ul>

3.	The film holder is stuck inside the scanner	<p>💡 <b>The scanner's power or USB cable got disconnected during the scan or some other error cause the scan to fail while the scanner was scanning</b></p> <p>Disconnect and reconnect the power and USB cables to the scanner. The scanner will attempt to eject any inserted film holder automatically when turned on. If the film holder is not ejected automatically, please eject the film holder by manually pulling it out from the front.</p> 
4.	The film holder is automatically ejected	<p>💡 <b>You pressed a button to bring the scanner out of sleep mode or you just connected the USB cable after accidentally disconnecting it</b></p> <p>The scanner will eject any inserted film holder when coming out of sleep mode or when connection with a computer has been established. This behavior is normal.</p>
5.	The film holder is not pulled into the scanner, and the Eject button LED is Orange	<p>💡 <b>The scanner and computer are not connected via USB cable</b></p> <p>Please make sure the scanner and your computer are connected via USB cable. The scanner will not pull in the film holder if the USB cable is disconnected.</p> <p>💡 <b>The scanner installation is not complete</b></p> <p>Please complete the scanner installation.</p>
6.	The scanner scans very slowly	<p>💡 <b>You are running other applications in the background</b></p> <p>Close all the other applications that are running in the background.</p> <p>💡 <b>You are scanning at a high resolution (DPI)</b></p> <p>Reduce the resolution.</p>

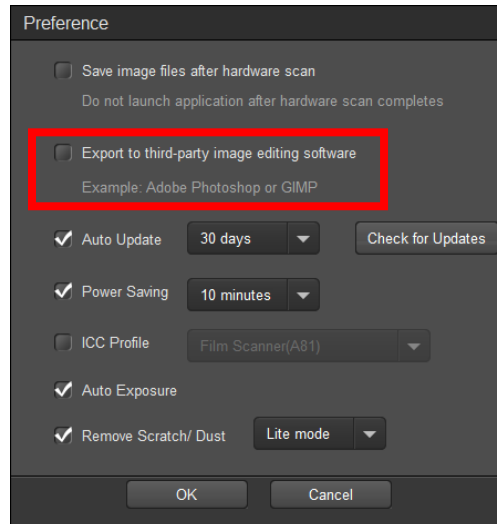
7.	There is a grinding or rattling noise at the beginning of each scan	 <b>The scanner engages the gears and it initializes itself before scanning</b> This noise is normal to the operation of the scanner.
----	---------------------------------------------------------------------	---------------------------------------------------------------------------------------------------------------------------------------------------------------------------------------------------------------------------



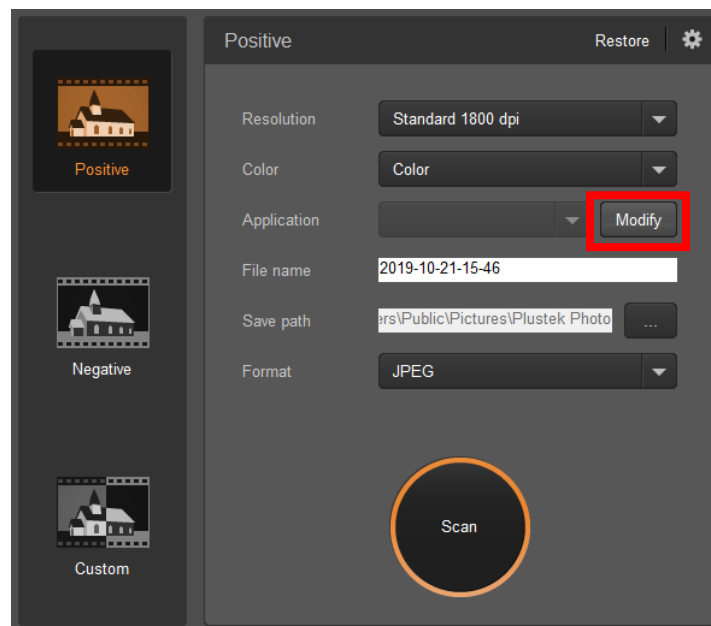
## FAQ

1. How to open the scan images in third-party image editing software?

Please activate **Export to third-party image editing software** option in **Preference** dialog.



And configure the **Application** settings in the main window.

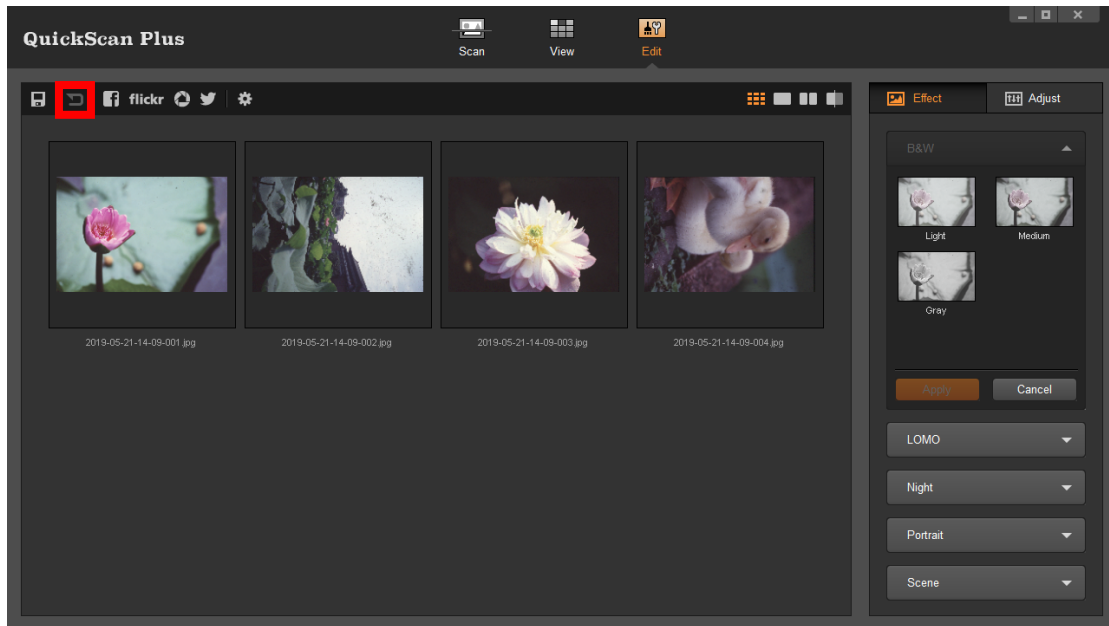


2. How to select non consecutive images on View screen?

Selected images will be highlighted with a gray rectangle around the images. You may click on one image, hold down the **Command** (Mac) or **Ctrl** (Windows) key and click one or more other images to deselect.

3. How to reset the modified images to the original status?

Just click on the **Reset** button to reset the selected images to their original state.

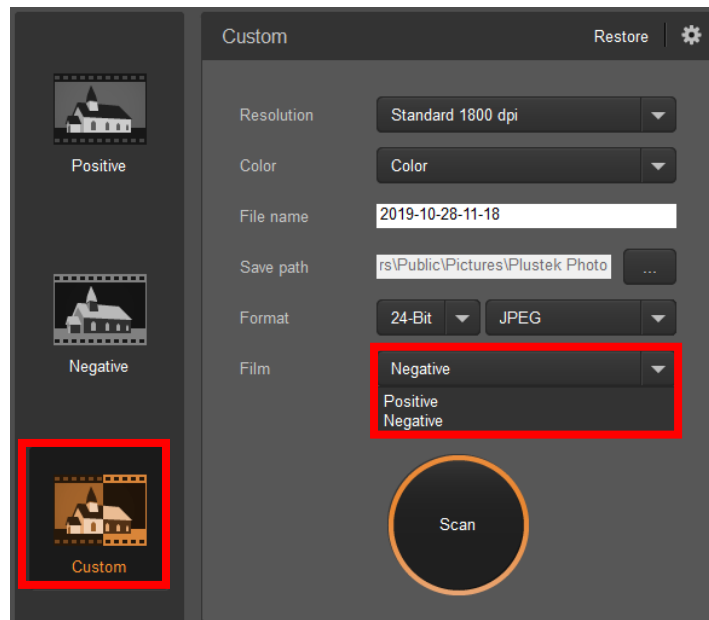


4. Why the scanner buttons are not functioned?

Please make sure the scanner is not in power saving mode, and the QuickScan Plus program is executed.

5. How to adjust the cropping areas?

You may select **Custom** scan mode to adjust the cropping areas if necessary.



## Appendix B: Specifications<sup>2</sup>

	OpticFilm 135i	OpticFilm 135
Image Sensor	CCD	
Light Source	LED	
Hardware Resolution	7200 dpi	3600 dpi
Scan Modes	Color: 48-bit input, 24/48-bit output Grayscale: 16-bit input, 8/16-bit output	
Dynamic Range	3.4	
Infrared	Built-in	N/A
Action Button	Eject button, Scan buttons x 3 (Positive, Negative, Custom)	
Scanning Speed	Approx. 52 seconds for maximum scanning area color at 600 dpi (IR enabled) Approx. 360 seconds for maximum scanning area color at 3600 dpi (IR enabled)  Remark: Approx. 25 minutes for maximum scanning area at maximum resolution: 7200dpi (IR enabled)	Approx. 40 seconds for maximum scanning area color at 600 dpi Approx. 205 seconds for maximum scanning area color at 3600 dpi
Net Weight	1.56 Kgs (3.49 Lbs)	
Scanning Area (W x L)	35 mm x 226 mm (1.37" x 8.9") Remark: 35 mm film strip and slide	
Dimensions (D x W x H)	175 mm x 259.2 mm x 104.3 mm (6.9" x 10.2" x 4.1")	
OS	Windows 7 / 8 / 10 Mac OS X 10.8.x/ 10.9.x/ 10.10.x/ 10.11.x/ 10.12.x/ 10.13.x/ 10.14.x/ 10.15.x	
Power Supply	24 Vdc/ 0.75A	
Interface	USB 2.0	
Hardware Requirements	Windows PC & Mac Intel i5 CPU or faster 4 GB RAM main memory (8 GB RAM recommended) 20 GB free space on hard disk drive CD/ DVD drive or internet connection	

<sup>2</sup> Hardware specifications may change at any time without prior notice.

## Appendix C: Customer Service and Warranty

If you encounter problems with your scanner, please review the installation instructions and troubleshooting suggestions contained in this guide.

Visit our website [www.plustek.com](http://www.plustek.com) for more customer service information. For further assistance call our customer support phone number listed on the website. One of our representatives will be happy to assist you from Monday through Friday in office working hours as shown below:

Europe	9:00 a.m. – 5:30 p.m. (CET)
Other Countries or Areas	9:00 a.m. – 6:00 p.m. Taiwan Time

To avoid delays, please have the following information available before calling:

- 🔧 **Scanner name and model number**
- 🔧 **Scanner serial number**
- 🔧 **A detailed description of the problem**
- 🔧 **Your computer manufacturer and its model number**
- 🔧 **The speed of your CPU (Pentium 133, etc.)**
- 🔧 **Your current operating system and BIOS (optional)**
- 🔧 **Name of software package(s), version or release number and manufacturer of the software**
- 🔧 **Other USB devices installed**

## **Service & Support Information (For EU country only)**

---

Where appropriate, the period of availability of spare parts and the possibilities of upgrading products information. Please ask local distributors and suppliers for spare parts information and product upgrade information.

Information requested by relevant Implementing Measure. Please ask local distributors and suppliers for the related information of Implementing Measure test report.

Do not dispose anything of products before you ask local distributors and suppliers to get correct information for decreases of environmental impact with right methods and procedures.

If you want to disposals the product and/or an accessory, please ask local distributors and suppliers to get the contact information of nearest disposal manufactures.

If you have any maintenance inquiry, please ask local distributors and suppliers to get the contact information of nearest maintenance center in order to extend the product usage life time.

If you want to maintain and clearance the product, please ask local distributors and suppliers to get the right information of nearest stores.

## **Statement of Limited Warranty**

---

This Statement of Limited Warranty applies only to the options you originally purchase for your use, and not for resale, from an authorized reseller.

The manufacturer warranty includes all parts and labor, and is not valid without the receipt of original purchase. To obtain warranty service, you may contact the authorized dealer or distributor, or visit our website to check out the available service information, or send a request via E-mail for further help.

If you transfer this product to another user, warranty service is available to that user for the remainder of the warranty period. You should give your proof of purchase and this statement to that user.

We warrant that this machine will be in good working order and will conform to its functional descriptions in the documentation provided. Upon provision of proof of purchase, replacement parts assume the remaining warranty of the parts they replace.

Before presenting this product for warranty service, you must remove all programmes, data and removable storage media. Products returned without guides and software will be replaced without guides and software.

This Limited Warranty service does not provide for carry-in exchange when the problem results from accident, disaster, vandalism, misuse, abuse, unsuitable environment, programme modification, another machine or non-vendor modification for this product.

If this product is an optional feature, this Limited Warranty applies only when the feature is used in a machine for which it was designed.

If you have any questions about your Limited Warranty, contact the approved retailer from whom you bought the product or the manufacturer.

THIS LIMITED WARRANTY REPLACES ALL OTHER WARRANTIES, EXPRESS OR IMPLIED, INCLUDING, BUT NOT LIMITED TO, THE IMPLIED WARRANTIES OF MERCHANTABILITY AND FITNESS FOR A PARTICULAR PURPOSE. HOWEVER, SOME LAWS DO NOT ALLOW THE EXCLUSION OF IMPLIED WARRANTIES. IF THESE LAWS APPLY, THEN ALL EXPRESS AND IMPLIED WARRANTIES ARE LIMITED IN DURATION TO THE WARRANTY PERIOD. NO OTHER WARRANTIES APPLY AFTER THAT PERIOD.

Some jurisdictions do not allow limitations on how long an implied warranty lasts, so the above limitation may not apply.

Under no circumstances are we liable for any of the following:

- ☛ Third party claims against you for losses or damages.
- ☛ Loss of, or damage to, your records or data; or
- ☛ Economic consequential damages (including lost profits or savings) or incidental damages, even if we are informed of their possibility.

Some jurisdictions do not allow the exclusion or limitations of incidental or consequential damages, so the above limitation or exclusion may not apply to you.

This Limited Warranty gives you specific legal rights, and you may also have other rights that vary from jurisdiction to jurisdiction.

To obtain the warranty service, you may:

- ☛ contact the authorized dealer or distributor.
- ☛ visit our website to check out the up-to-date service.
- ☛ send a request via E-mail for further help.

## **FCC Radio Frequency Statement**

---

This equipment has been tested and found to comply with the limits for a Class B digital device, pursuant to part 15 of the FCC rules. These limits are designed to provide reasonable protection against harmful interference in a residential installation.

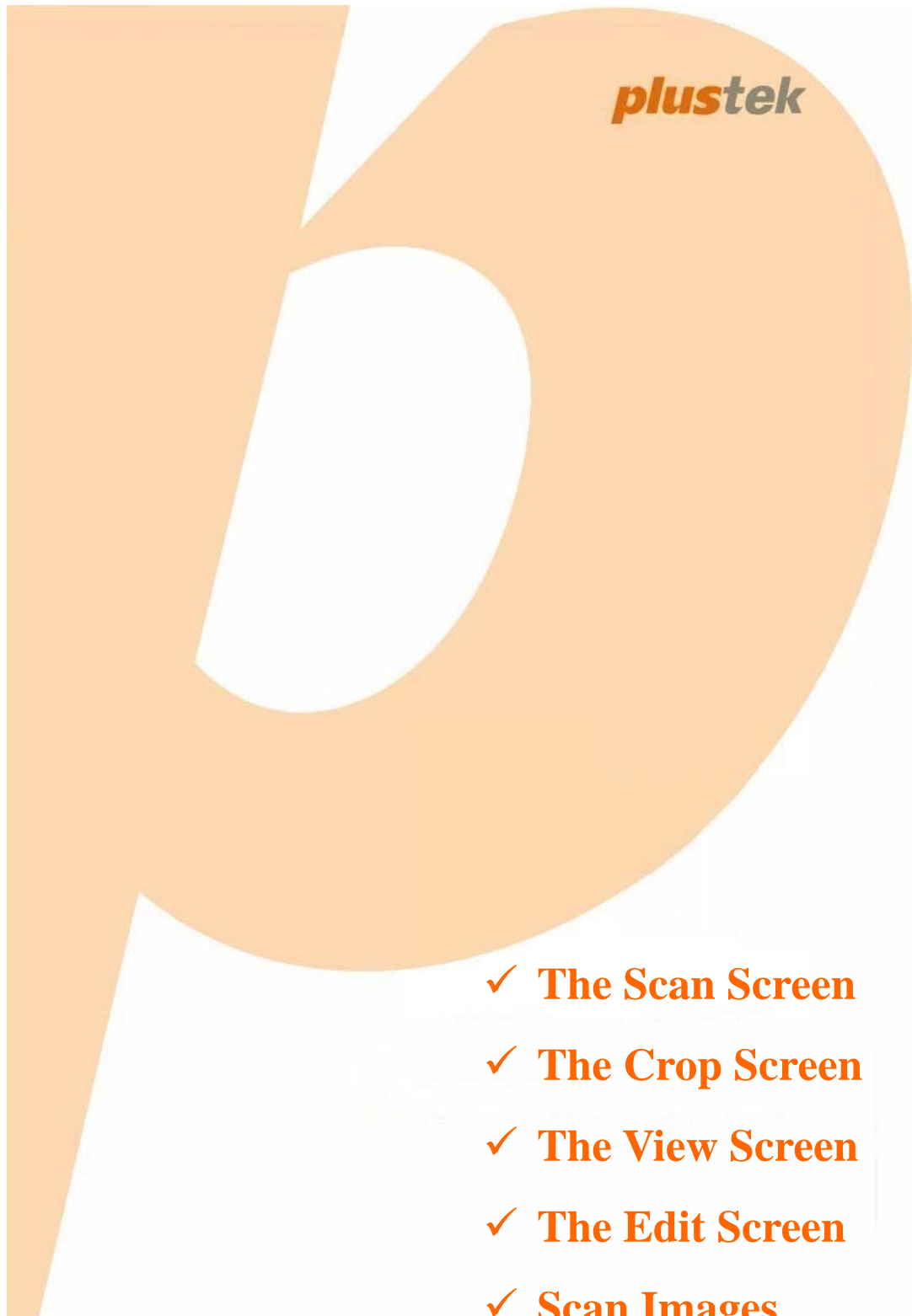
This equipment generates, uses and can radiate radio frequency energy and, if not installed and used in accordance with the instructions, may cause harmful interference to radio communications. However, there is no guarantee that interference will not occur in a particular television reception (which can be determined by turning the equipment off and on), the user is encouraged to try to correct the interference by one or more of the following measures:

- ☛ Reorient or relocate the receiving antenna.

- 🔊 Increase the separation between the equipment and receiver.
- 🔊 Connect the equipment to an outlet on a circuit different from that which the receiver is connected.
- 🔊 Shielded interconnect cables and shielded power cord which are supplied with this equipment must be employed with this equipment to ensure compliance with the pertinent RF emission limits governing this device.
- 🔊 Consult the dealer or an experienced radio/TV technician for help if the conditions persist.
- 🔊 Changes or modifications not expressly approved by the manufacturer or authorized service center could void the user's authority to operate this equipment.

# *QuickScan Plus*

## *Online Help*



- ✓ **The Scan Screen**
- ✓ **The Crop Screen**
- ✓ **The View Screen**
- ✓ **The Edit Screen**
- ✓ **Scan Images**



# QuickScan Plus: Table of Contents

<b>Part I Introduction</b>	<b>2</b>
<b>Part II User Interface Overview</b>	<b>2</b>
1 Preference Settings .....	4
2 The Scan Screen .....	7
3 The Crop Screen .....	8
4 The View Screen .....	9
5 The Edit Screen .....	11
Effect .....	12
Adjust .....	13
<b>Part III Working with this program</b>	<b>14</b>
1 Scan Images .....	14

## 1 Introduction

This program is a specialized image scanning program that allows you to conveniently scan and edit positive and negative films, and automatically save their electronic files in the designated folder. This program, seamlessly integrating the operation of your scanner with your computer, provides a quick and convenient way to perform various functions.

This help file will familiarize you with the program's user interface and related functions. The programs included on the Setup/Application CD must be installed on your computer in order for the scanner functions in this program to work properly.

This help assumes the user is familiar with Microsoft Windows / Mac OS. If this is not the case, we suggest you learn more about Microsoft Windows / Mac OS by referring to your Microsoft Windows / Mac OS manual before using your scanner. The screen shots in this online help were made with Windows 7. If you are using Mac OS, your screen will look somewhat different but functions the same.

## 2 User Interface Overview


The user interface contains the following components:

- [Preference Settings](#): You may configure **Preference** settings here.
- [The Scan screen](#): The **Scan** screen is where you set your scanning parameters.
- [The Crop screen](#): The **Crop** screen is where you can adjust the crop areas.
- [The View screen](#): The **View** screen is where you select one or multiple images to edit, share or delete.
- [The Edit screen](#): The **Edit** screen is where you can apply various filter effects and make more detailed adjustments to your images.

To launch the program, you can do one of the following:


For Windows OS:

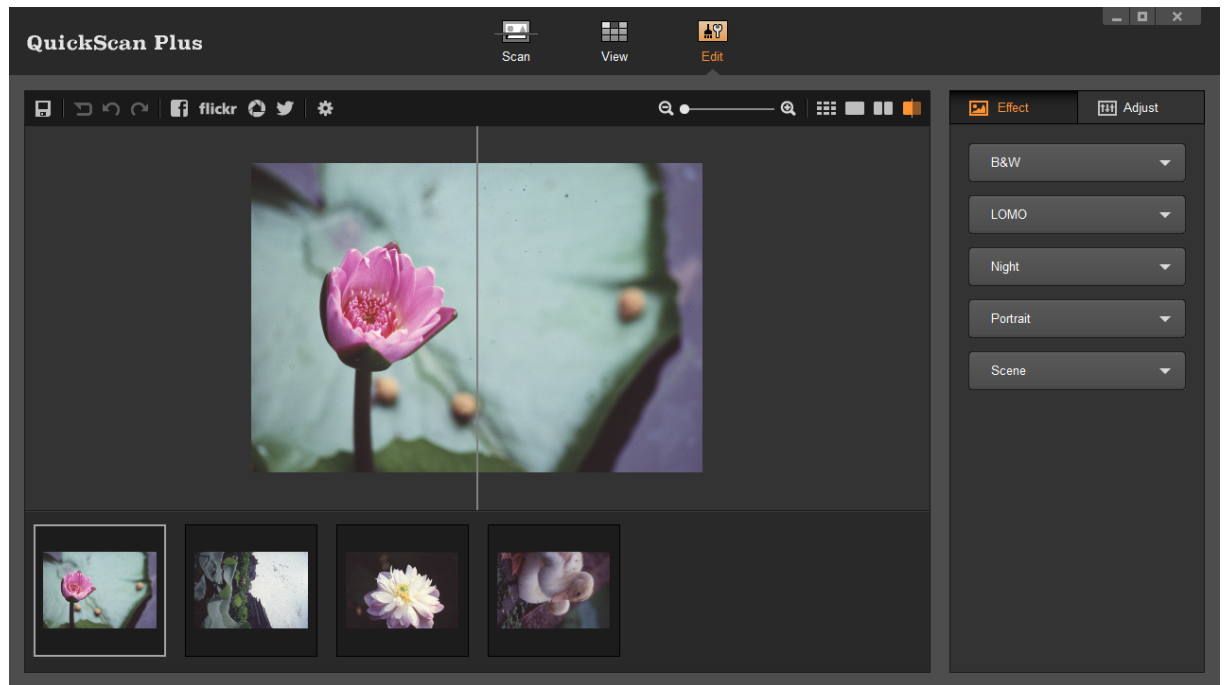
1. Click on the **QuickScan Plus** shortcut from the Windows **Start** menu > **All Programs** > **Your Scanner Model Name** folder. (For Windows 8.1 users: Point your mouse cursor to the upper or lower right corner of your screen to open the **Charm** bar. Click on the **Start** charm, then click on the downwards arrow button in the lower left corner of the screen. The **Apps** screen will be shown. Move your cursor to the right edge of the screen to scroll right until you find **Your Scanner Model Name**, and then click on **QuickScan Plus**.)

2. Double-click the icon  on the desktop.

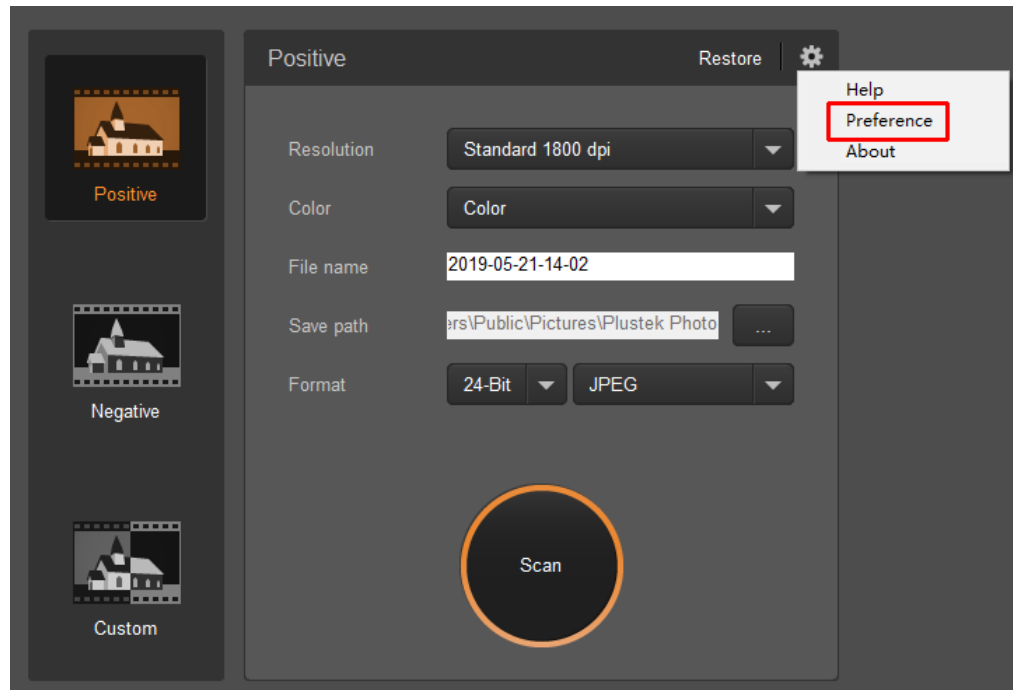
For Mac OS:

1. Double-click the icon  in **Finder > Applications > Plustek > Your scanner model name**.
2. Click the icon  in the Dock.

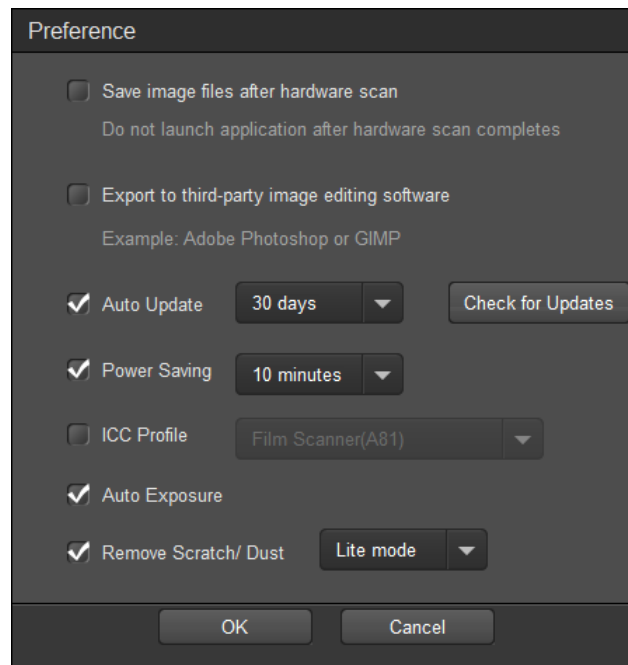
To close the program, please click the **Close** button  in the upper right corner of the program window.



## 2.1 Preference Settings



Click on  button and select **Preference** to open the **Preference** settings dialog.



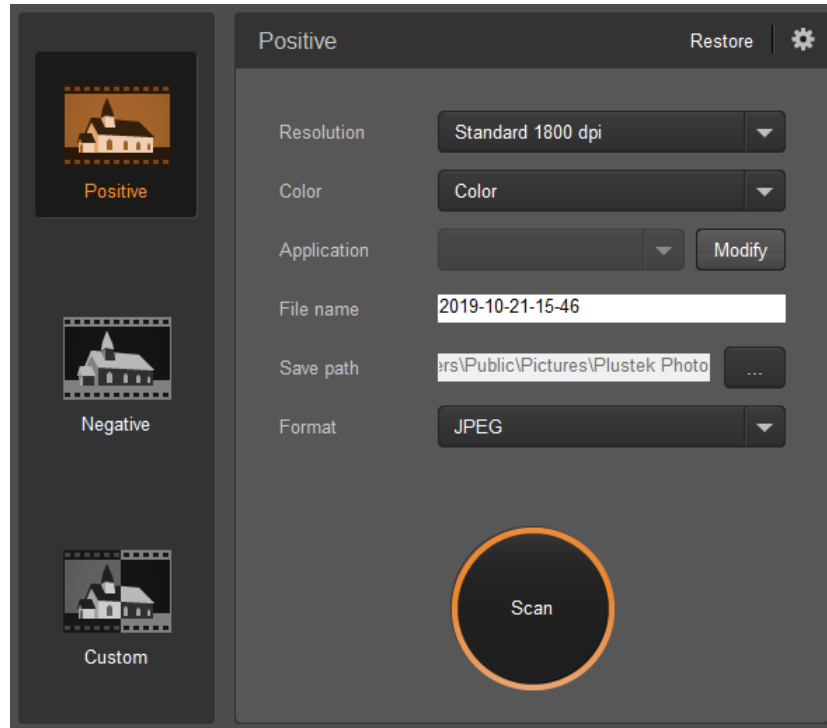
- **Save image files after hardware scan:** Activate this checkbox if you do not want the QuickScan Plus program to launch after scanning images.
- **Export to 3rd party image editing software:** Activate this checkbox to export the scanned images to 3rd party image editing software for further editing. The scanned

images will be opened directly on 3rd party image editing software.

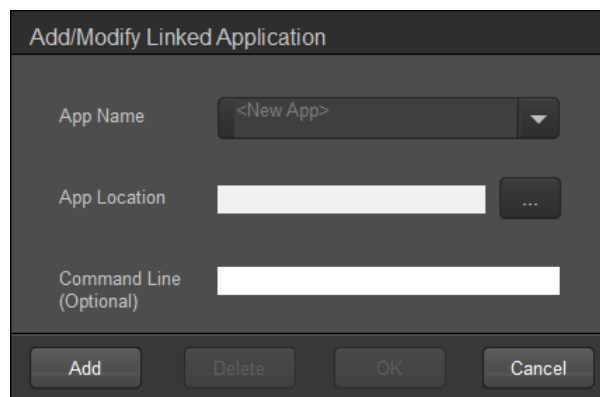
Note: The negative film scanned images will be exported to 3rd party image editing software without any image processing.



If you activate this checkbox, the main window will appear as following:



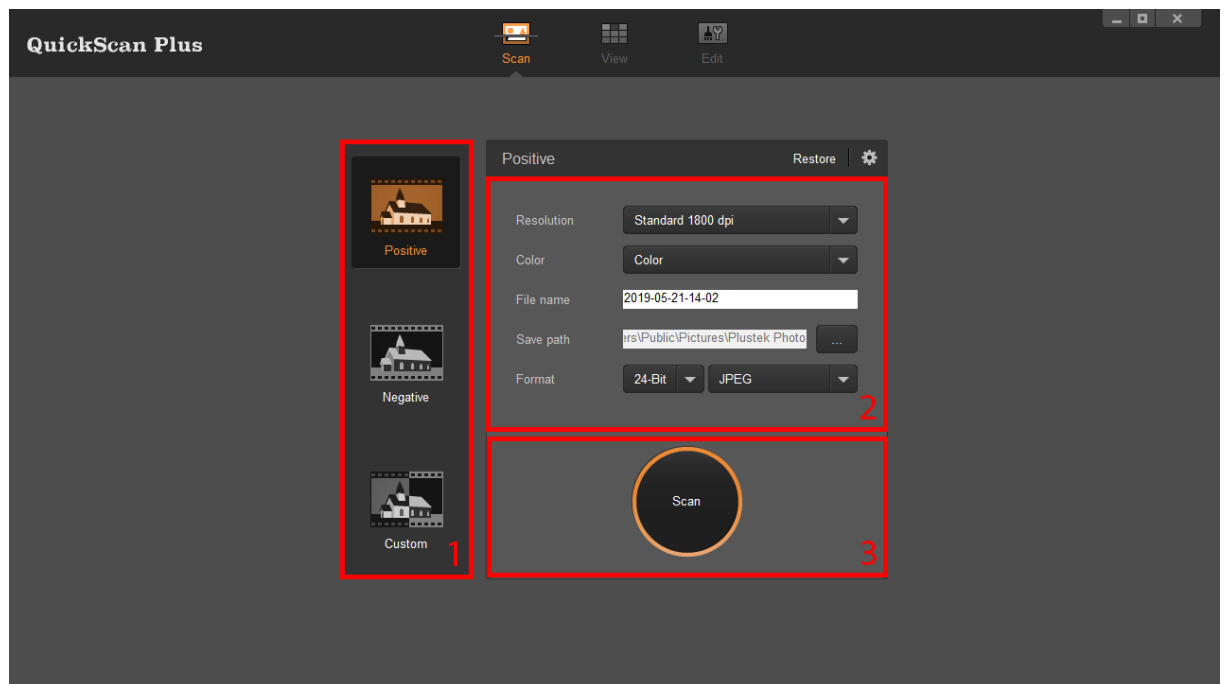
Click the **Modify** button to add desired applications, for example: Photoshop, GIMP. You may add up to 5 applications.




- **App Name:** Enter the application name.
- **App Location:** Click on the **...** button to browse to the desired program folder and select the executable file (\*.exe) of the desired application.
- **Command Line (Optional):** It is recommended that you leave this field blank if you will not use or are unsure of the command line.

- **Auto Update:** Activate this checkbox and select a value from the drop-down list to set how often this program should automatically check for updates. Click the **Check for Updates** button to check if there is any update.
- **Power Saving:** Activate this checkbox and select a value from the drop-down list to set when the scanner will enter power saving mode. Simply press on any of the scanner's physical buttons to wake it.
- **ICC Profile:** Activate this checkbox and select a profile from the drop-down list to set device output color standard.
- **Auto Exposure:** Activate this checkbox to perform auto exposure.
- **Remove Scratch/ Dust:** Activate this checkbox and select a desired mode from the drop-down list to remove scratch/dust. This function is only for the infrared built-in model.

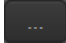
## 2.2 The Scan Screen



The **Scan** screen is where you set your scanning parameters. These scanning parameters will also be used when you initiate a scan using the physical buttons on your scanner.

- **Restore:** Click this button to restore all settings to default settings.
-  **Help & Tools:** Click on this button to open a context menu with the following items:
  - **Help:** Select this item to launch the on-line help file.
  - **Preference:** Select this item to open the **Preference** dialog.

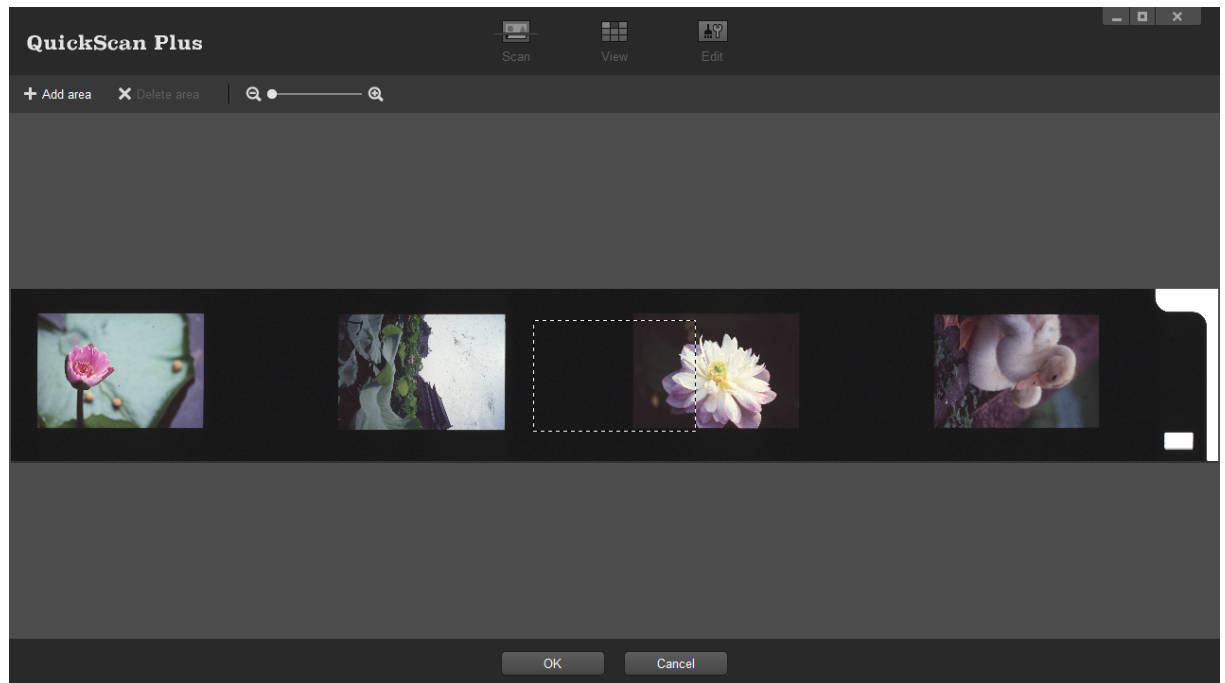
- **About:** Select this item to open the program information dialog.

- 
- **Scan mode:** Selected by clicking on the respective button on the left side, you can choose between **Positive**, **Negative** and **Custom**. Basically this allows you to create 3 scan profiles; one for positives, one for negatives and one for either positives or negatives.
  - **Resolution:** Select a desired resolution from the drop-down list. The higher the resolution, the more detailed the scan and the resulting file will be.
  - **Color:** Select a desired color mode from the drop-down list.
  - **File name:** Enter the desired file name into the field. The default uses your computer's date and time.
  - **Save path:** Click on the **Browse** button  and use the dialog to select the folder where you wish to store your scanned images. For example, the default saving path in Windows 7 is **Users > Public > Public Pictures > Plustek Photo**.
  - **Format:** Select the desired bit rate and file format you wish to use from the drop-down lists. The higher the bit rate, the more detailed the scan and the larger the resulting file will be.
    - **JPEG:** Lossy file format. Provides the best balance between image quality and file size.
    - **TIFF:** Lossless file format. Prioritizes image quality over file size, resulting in the largest file size between the available file formats.
    - **PNG:** Lossless file format that uses some optimizations to provide a good balance between image quality and file size.
    - **Windows Bitmap:** Lossless file format without any special features. Not recommended.
  - **Film** (Custom mode only): Select the desired film type from the drop-down list.
  - **Scan:** Insert your film tray and click on the **Scan** button when you are ready to scan.

## 2.3 The Crop Screen

### The Crop Screen





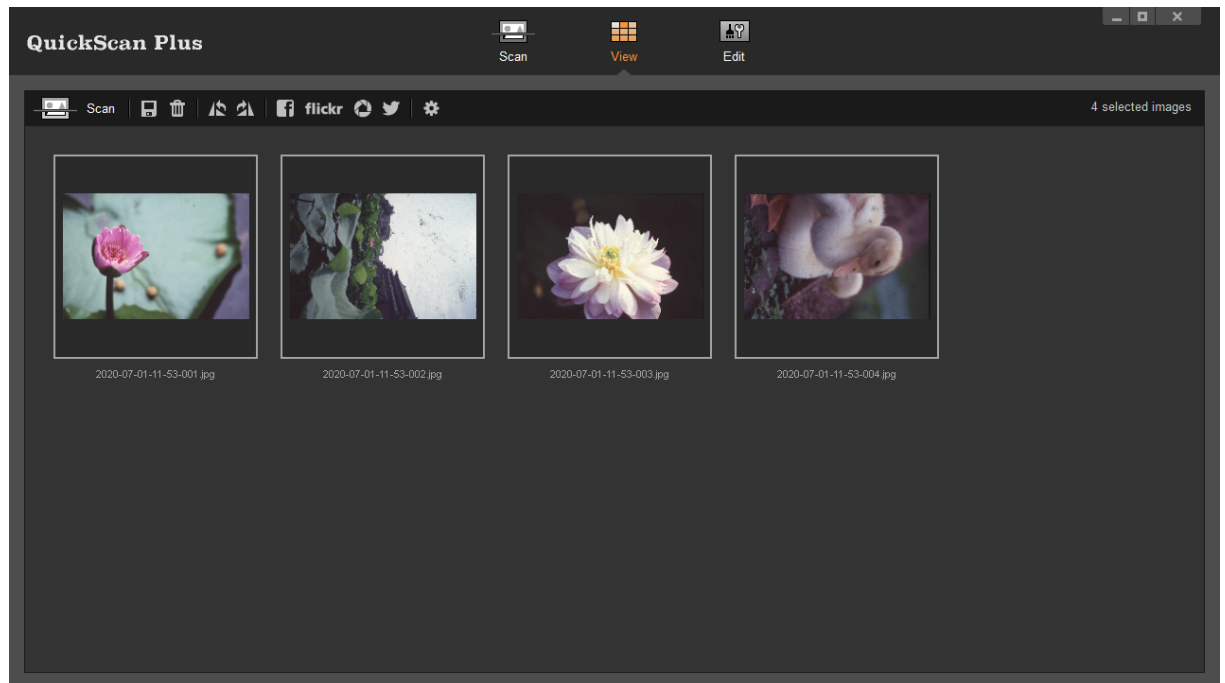
The **Crop** screen is where you can adjust the crop areas using click and drag, or add or delete areas by clicking on the respective buttons. You can also zoom in on the frames using your mouse wheel or by using the zoom buttons above the frames. The **Crop** screen will be shown if you selected the **Custom** scan mode or when automatic framing and cropping failed.

- **+ Add area** **Add area:** Click on this button to add a crop area to the screen. Click and drag it to a desired frame and adjust the area by using your mouse.
- **X Delete area** **Delete area:** Click on this button to delete the currently selected crop area.
- **Zoom out:** Click this button to zoom out of the image. You can also use mouse wheel down to perform the same action.
- **Zoom in:** Click this button to zoom in on the image. You can also use mouse wheel up to perform the same action.







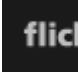

## 2.4 The View Screen





The View Screen



The **View** screen is where you select one or multiple images to edit, share or delete. Selected images will be highlighted with a gray rectangle around the images. Simply click an image to remove a picture from your selection.

-  **Scan:** Insert your film tray and click on the **Scan** button when you are ready to scan. You may scan up to 36 images at a time.
-  **Save:** Click on this button to save any changes you have made to the selected images.
-  **Delete:** Click on this button to delete the selected images.
-  **Rotate counterclockwise:** Click on this button to rotate the selected images in a counterclockwise direction.
-  **Rotate clockwise:** Click on this button to rotate the selected images in a clockwise direction.
-  **Share to Facebook:** Click this button to launch the Facebook website in a dialog within QuickScan Plus.
-  **Share to flickr:** Click this button to launch the flickr website in a dialog within QuickScan Plus.
-  **Share to Google Drive:** Click this button to launch the Google Drive website

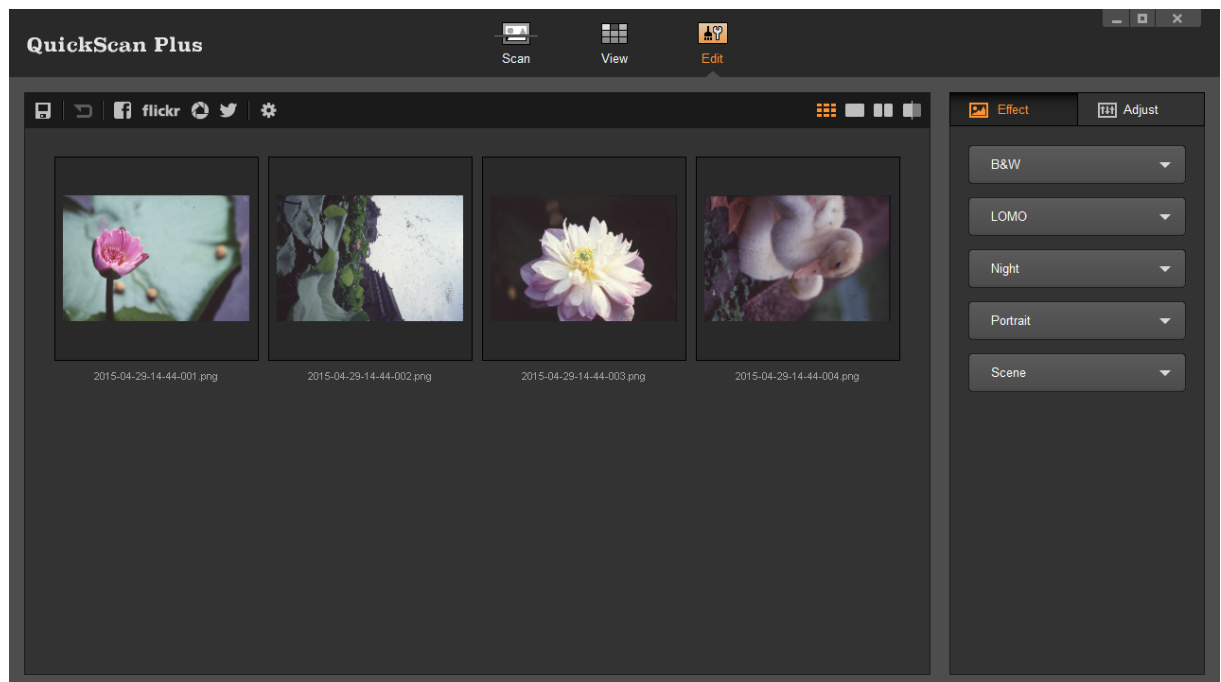
in a dialog within QuickScan Plus.

-  **Share to Twitter:** Click this button to launch the Twitter website in a dialog within QuickScan Plus.
-  **Help & Tools:** Click on this button to open a context menu with the following items:
  - **Help:** Select this item to launch the on-line help file.
  - **Preference:** Select this item to open the **Preference** dialog.
  - **About:** Select this item to open the program information dialog.

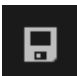
## 2.5 The Edit Screen









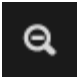
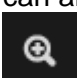






The Edit Screen

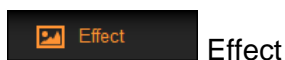


The **Edit** screen is where you can apply various filter effects and make more detailed adjustments to your images. When you have multiple images selected, you can have the effects and adjustments applied to all images at the same time. To help you visualize the effects and adjustments, you can switch to "Dual-view" or "Midline" modes. All changes can be undone and redone step by step and you can also reset the image back to its original state.

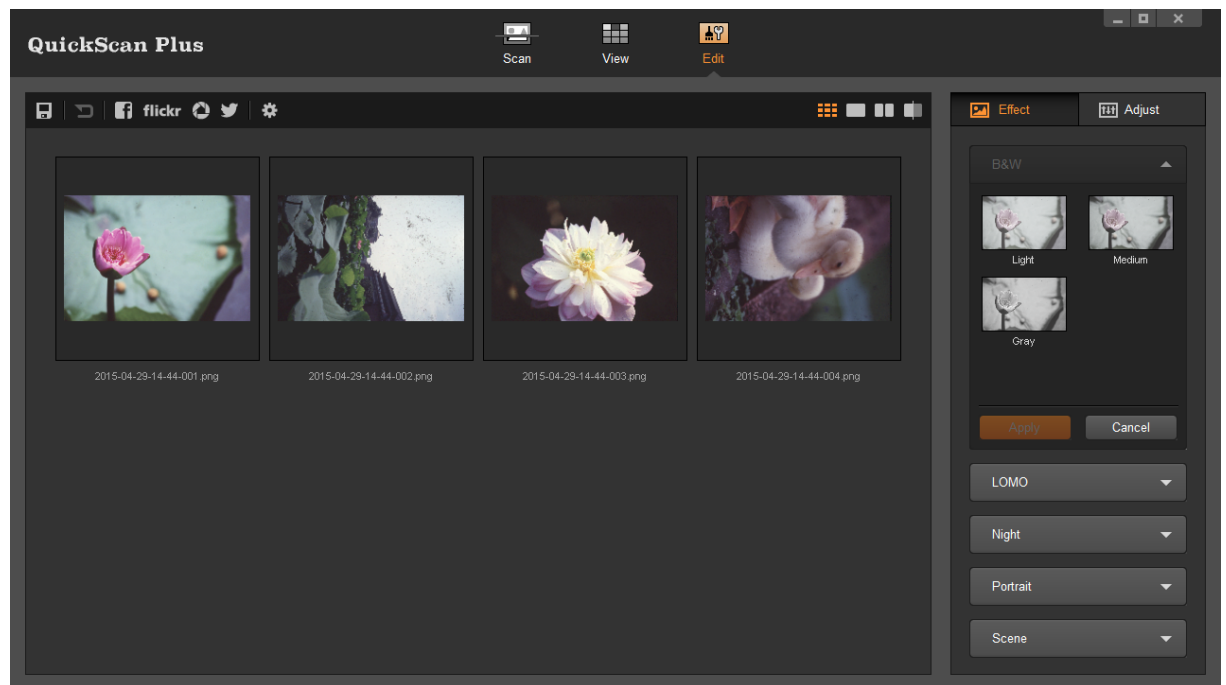
-  **Save:** Click on this button to save any changes you have made to the selected images.

-  **Reset:** Click on this button to reset the selected images to their original state.
-  **Undo:** Click on this button to undo the last effect or adjustment.
-  **Redo:** Click on this button to redo the last effect or adjustment.
-  **Share to Facebook:** Click this button to launch the Facebook website in a dialog within QuickScan Plus.
-  **Share to flickr:** Click this button to launch the flickr website in a dialog within QuickScan Plus.
-  **Share to Google Drive:** Click this button to launch the Google Drive website in dialog within QuickScan Plus.
-  **Share to Twitter:** Click this button to launch the Twitter website in a dialog within QuickScan Plus.
-  **Help & Tools:** Click on this button to open a context menu with the following items:
  - **Help:** Select this item to launch the on-line help file.
  - **Preference:** Select this item to open the **Preference** dialog.
  - **About:** Select this item to open the program information dialog.
-  **Zoom out:** Click this button to zoom out of the currently selected image. You can also use mouse wheel down to perform the same action.
-  **Zoom in:** Click this button to zoom in on the currently selected image. You can also use mouse wheel up to perform the same action.
-  **Edit multiple:** Click on this button to switch to the multi-view mode.
-  **Edit single:** Click on this button to switch to the single-view mode.
-  **Dual-view:** Click on this button to switch to the dual-view mode.
-  **Midline:** Click on this button to switch to the midline-view mode.

### 2.5.1 Effect

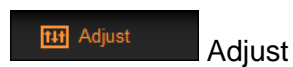


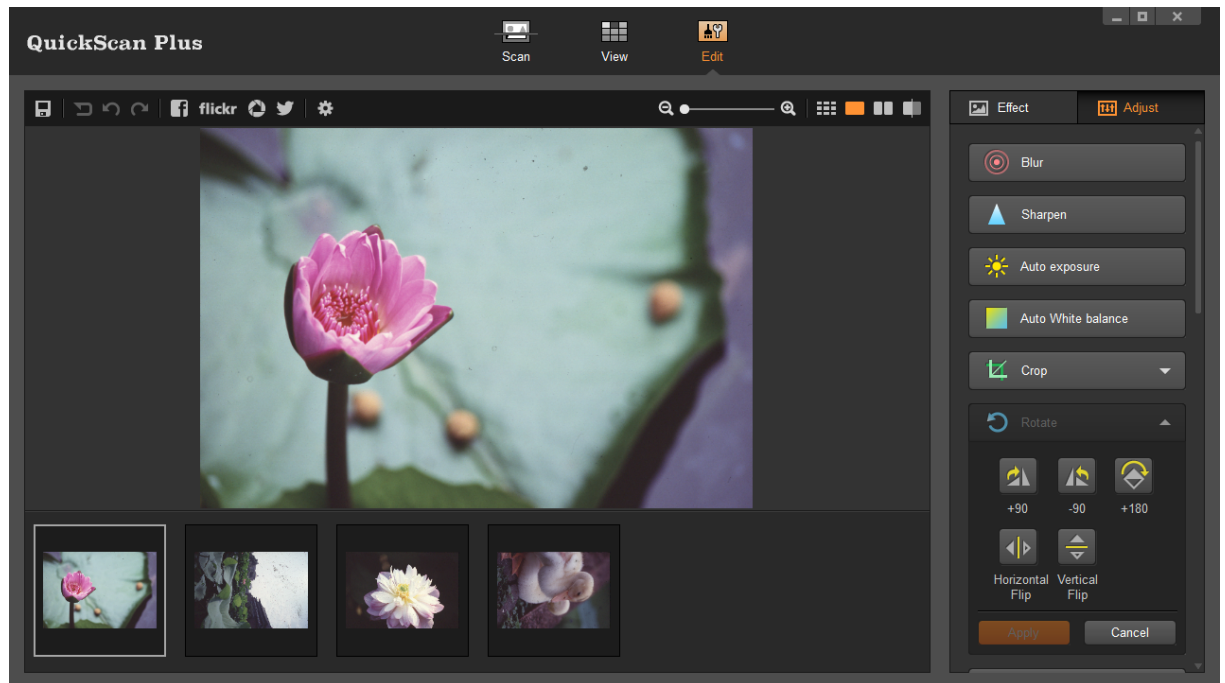
Effect



Click on the **Effect** tab to view all available effect filters you can apply to your images. Click on any category title to expand that category's list. Use your mouse wheel to scroll through the list of available effects, then select a desired effect with a mouse click. The selected effect will be laid over your images to better visualize the effect for you. Click on the **Apply** button to apply the effect or click on the **Cancel** button to close the effect category.

## 2.5.2 Adjust





Click on the **Adjust** tab to view all available adjustments you can apply to your images. Click on any adjustment to apply it to the currently selected image. If the adjustment has sub-items you can select, it will be expanded when you click on it. Select the desired adjustments and click on the **Apply** button to apply the adjustment or click on the **Cancel** button to close the adjustment sub-items.

## 3 Working with this program

This section covers the most frequent how-tos you may want to know with this program. We'll walk you through these practical applications step by step.

- **Scan Images:** Scan and save one or more images without processing them. The scanned images will be saved in the file format and folder of your choice.


### 3.1 Scan Images

Follow the steps described below:



1. To launch the program, you can do one of the following:

For Windows OS:

- Click on the **QuickScan Plus** shortcut from the Windows **Start** menu > **All Programs** > **Your Scanner Model Name** folder. (For Windows 8.1 users: Point your mouse cursor to the upper or lower right corner of your screen to open the **Charm** bar. Click on the **Start** charm, then click on the downwards arrow button in the lower left corner of the screen. The **Apps** screen will be shown. Move your cursor to the right edge of the screen to scroll right until you find **Your Scanner Model Name**, and then click on **QuickScan Plus**.)

- Double-click the icon  on the desktop.

For Mac OS:

- Double-click the icon  in **Finder > Applications > Plustek > Your scanner model name**.
  - Click the icon  in the Dock.
2. You will be greeted by the **Scan** screen. Select your desired scan mode by clicking on one of the buttons on the left. Adjust the scan settings in the middle if necessary. Insert your film tray and click on the **Scan** button when you are ready to scan.
  3. A progress bar will be shown while the scan is being performed. After the scan is completed, the **View** screen will be shown. Please skip to step 5.
  4. The **Crop** screen will be shown if you selected the **Custom** scan mode or when automatic framing and cropping failed. Adjust the crop area using click and drag, and add or delete areas by clicking on the respective buttons. When you are done adjusting the crop areas, click on the **OK** button. You will be taken to the **View** screen.
  5. Click on the **Save** button, your images are already saved and can be found in the folder you set under **Save path** on the **Scan** screen.

You may select one or multiple images to delete, rotate or share at the same time. Selected images will be highlighted with a gray rectangle around the images. Simply click an image to remove a picture from your selection. Click on the **Edit** button above the frames to switch to the **Edit** screen to apply various filter effects and make more detailed adjustments to your images.