

## 1. Disassembly Procedures:

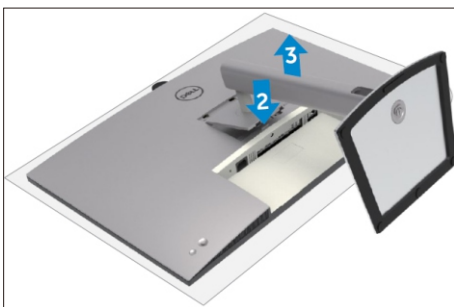
**S1** Turn off power..



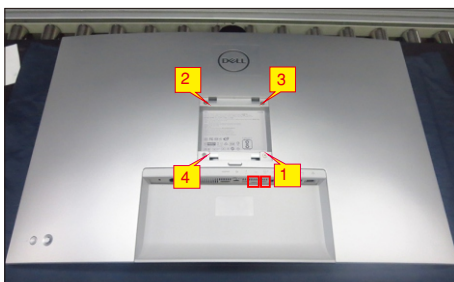
**S2** Unplug external cables(power cable and video cable) from the monitor.



**S3** Remove stand from the product.(Press the stand release button, lift the stand up and away from the monitor)

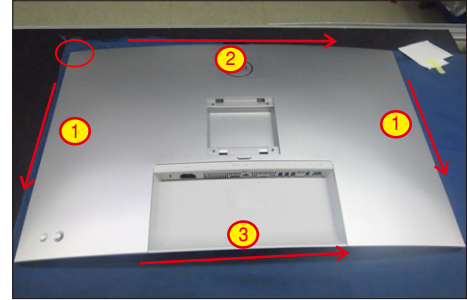


**S4** Put the monitor on a protective cushion, then use a Philips-head screwdriver to remove 4pcs screws for unlocking mechanisms. Remove DP caps.  
(No.1~4 screw size=M4x11; Torque=11±1kgfxcM)



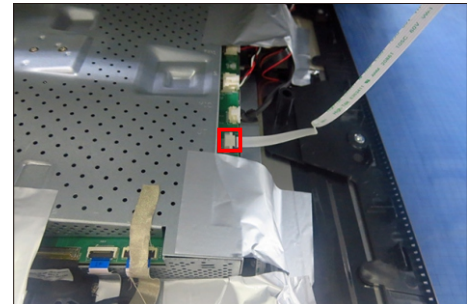
**S5**

Tear off screen protector, then wedge your fingers between rear cover and the middle bezel on the corners of the top side of the monitor to release the rear cover, then use one hand to press the middle bezel, the other hand to pull up the rear cover in order of arrow preference for unlocking the rear cover.



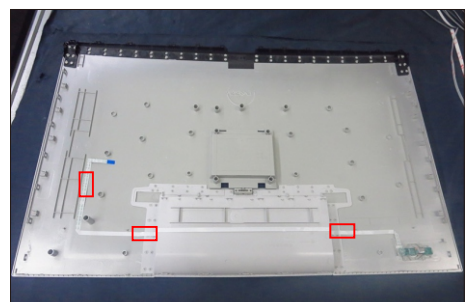
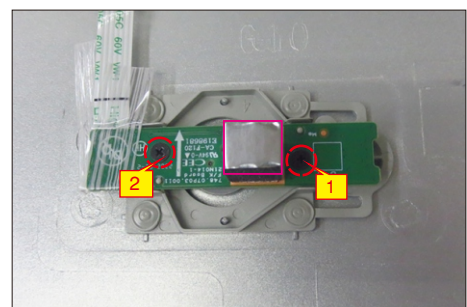
**S6**

Lift the rear cover up carefully. Disconnect the joystick key cable from the connector of the interface board, and then remove the rear cover and put it aside for later disassembling.



**S7**

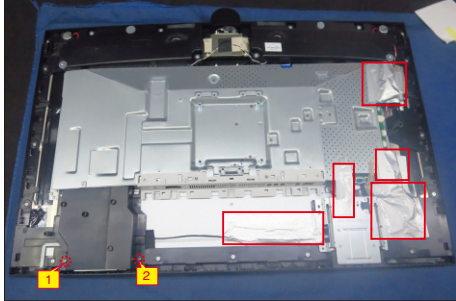
Use a Philips-head screwdriver to remove 2pcs screw for unlocking the key board, then tear off the tapes and release the key board.  
(No.1~2 screw size=M2x3.3, Torque=0.8~1kgfxcM)



S8

Tear off 5pcs aluminum foil, then use a Philips-head screwdriver to remove 2pcs screws for unlocking the fan's cover.

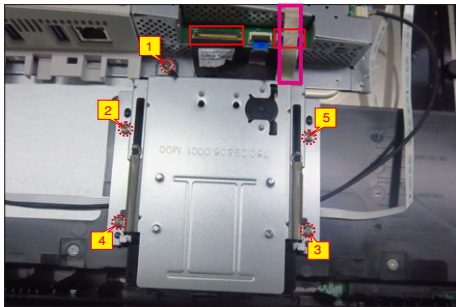
(No.1~2 screw size=M3x6, Torque=4±1kgfxcM)



S9

Tear off 1pcs mylar tape, then use a Philips-head screwdriver to remove 5pcs screw for unlocking the wire and USB unit with the bracket and middle frame, then disconnect USB wires and remove the USB unit.

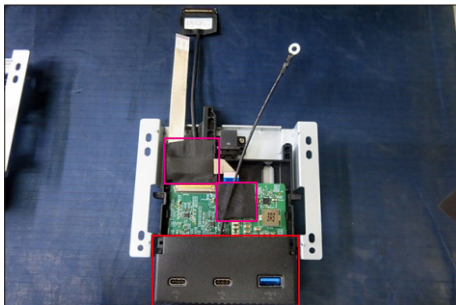
(No.1 screw size=M3x6, Torque=5±1kgfxcM;  
No.2~5 screw size=M3x4, Torque=3.5±0.5kgfxcM)



S10

Tear off 2pcs tapes, then disassemble the USB hub cover away from the USB unit. Use a Philips-head screwdriver to remove 1pcs screws for unlocking the USB unit and wire with the bracket, then release the USB board away from the bracket.

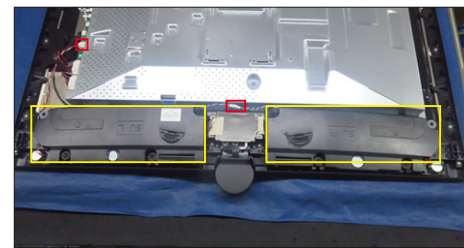
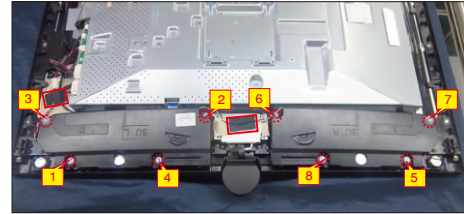
(No.1 screw size=M3x5, Torque=4±0.5kgfxcM)



S11

Tear off 2pcs tape, then disconnect the speakers' wire from the connector of the board. Use a Philips-head screwdriver to remove 8pcs screws for unlocking the two speakers, then remove the two speakers from the hooks of the middle frame.

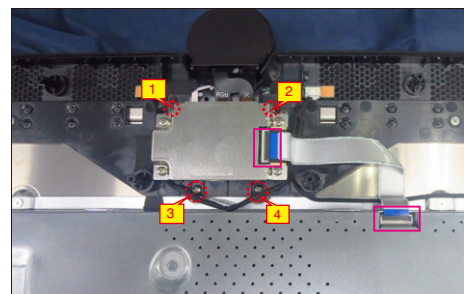
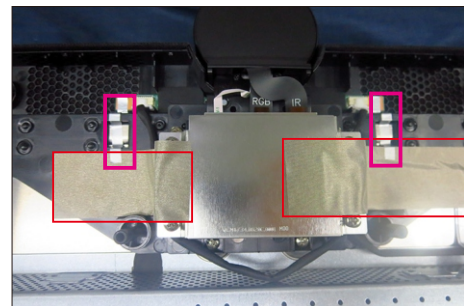
(No.1~8 screw size=M3x8; Torque=6±1kgfxcM)



S12

Tear off 2pcs aluminum foil and 2pcs mylar tape and disconnect FFC cable away from the main board, then use a Philips-head screwdriver to remove 4pcs screws for unlocking the camera unit.

(No.1~4 Screw size= M3x4.5, Torque=5 0.5kgfxcM)

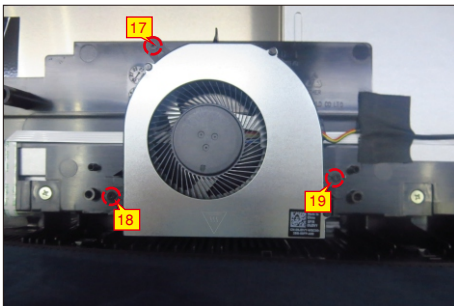
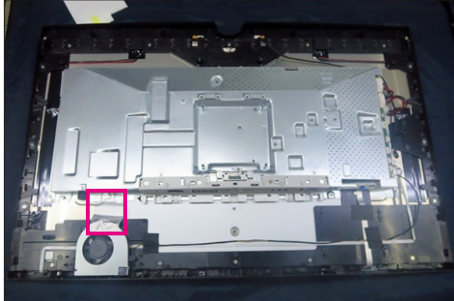




S13

Tear off 1pcs aluminum foil for uncovering the fan, then use a Philips-head screwdriver to remove 3pcs screws for unlocking the fan with the unit.

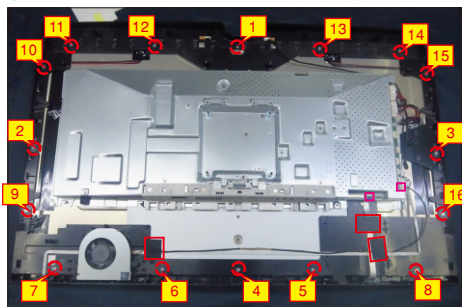
(No.17~19 screw size=M3x4.5, Torque=5±0.5kgfxcM)



Use a Philips-head screwdriver to remove 16pcs screws for unlocking the middle frame with the panel, then tear off 3pcs tapes and disconnect fans' wire and touch wire from the connectors, and then remove the fan from the hook of the middle frame.

(No.1~16 screw size=M3x5, Torque=5±0.5kgfxcM)

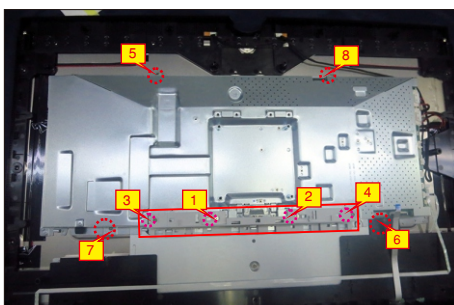
S14



Use the screwdriver to remove 4pcs screws for unlocking the main bracket with the panel. Use a Philips-head screwdriver to remove 4pcs screws for unlocking the bracket cover, and then remove the bracket cover and put it aside.

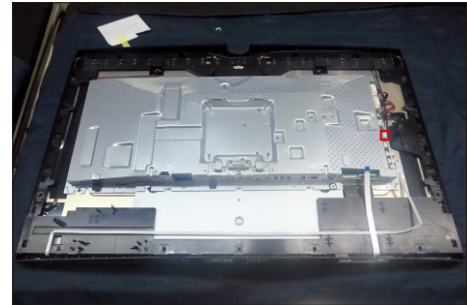
(No.1~8 Screw size= M3x4, Torque=5±0.5kgfxcM)

S15



S16

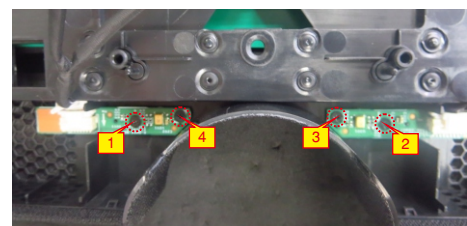
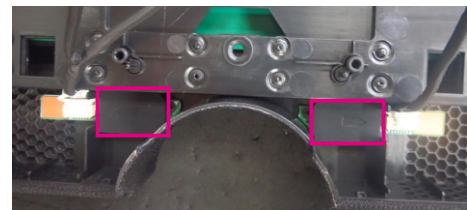
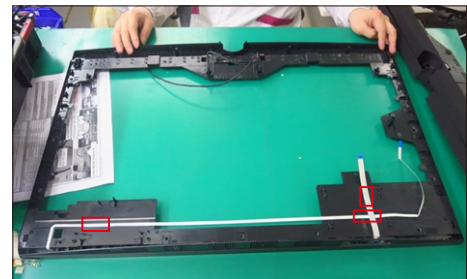
Disconnect the DMIC wire away from the connector of the main board, then lift up and take away the middle frame with front bezel.



Tear off all the tapes for releasing the LED wire and touch wire, then tear off 2pcs rubber pads. Use a Philips-head screwdriver to remove 4pcs screws for unlocking the left and right DMic boards, then tear off the left and right DMIC boards from the middle frame.

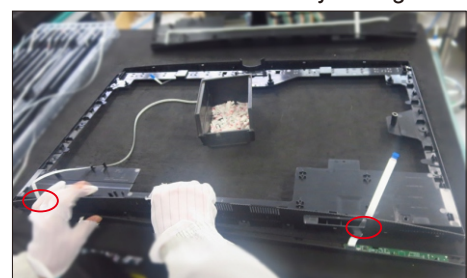
(No.1~4 screw size=M2x2.4, Torque=1±0.2kgfxcM)

S17



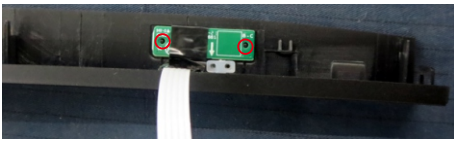
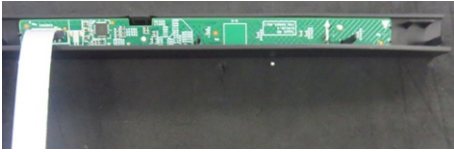
Release the front bezel away from the middle frame, and put the front bezel on a protective cushion, then tear off the black mylar tape and release LED board from the hooks of the front bezel, then release the touch board from front bezel by tearing off the tape.

S18



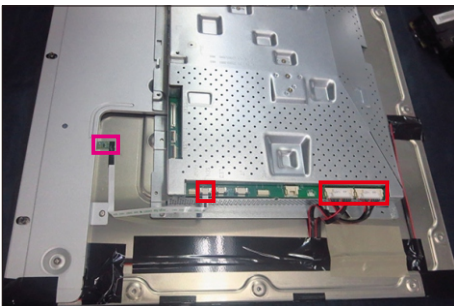
S19

Put the front bezel on a protective cushion, then tear off the black mylar tape and release LED board from the hooks of the front bezel, then release the touch board away from front bezel by tearing off the tape.



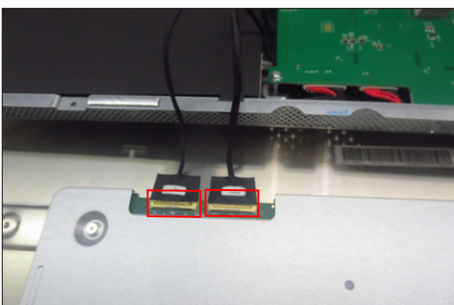
S20

Disconnect the sensor cable and two panel lamp cables away from the connectors of main board, then release the sensor board away from the back of panel by tearing off the tape.



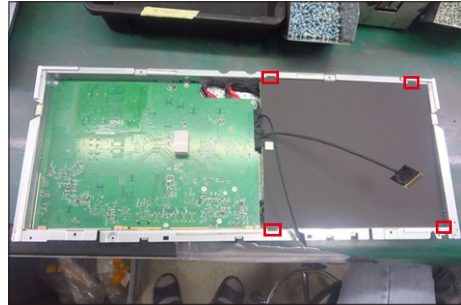
S21

lift up the main bracket and then disconnect the two EDP cables away from the connector of the panel, then take away the main bracket and put it aside.



S22

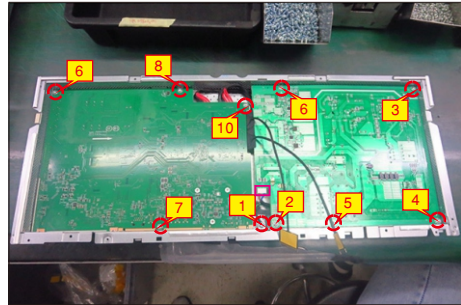
Release the Mylar tape from the hooks of the main bracket.



S23

Use a Philips-head screwdriver to remove 10pcs screws for main board and power board, then disconnect the power switch wire from power board.

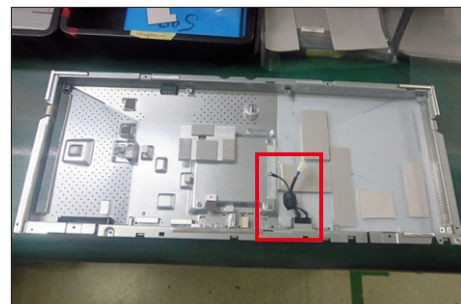
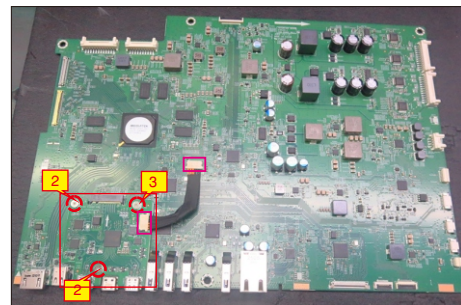
(No.1 screw size=M4x8, Torque=7±1kgfxcM;  
No.2~10 screw size=M3x7.5, Torque=7±1kgfxcM)



S24

Remove the power board and main board with TBT board from the main bracket, and then disconnect all of the cables. Release the AC power switch from bracket. Use a Philips-head screwdriver to remove 3pcs screws for unlocking the TBT board.

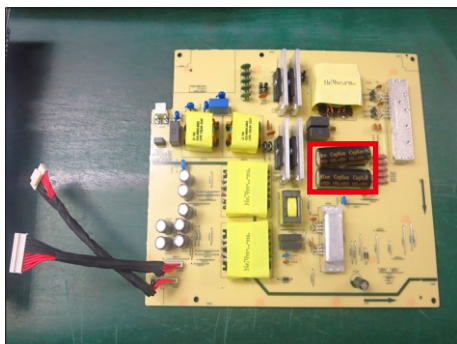
(No.1~3 screw size=M3x7.5, Torque=6±0.5kgfxcM)



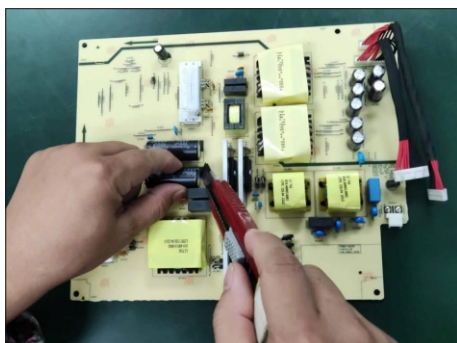


S25

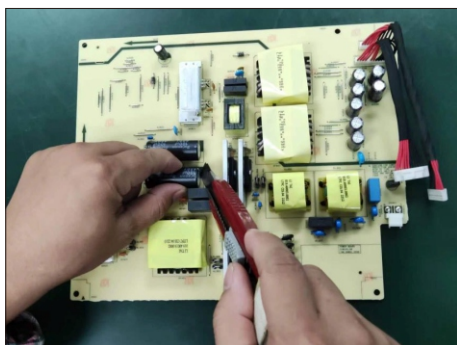
Remove electrolyte capacitors (red mark) from printed circuit boards.



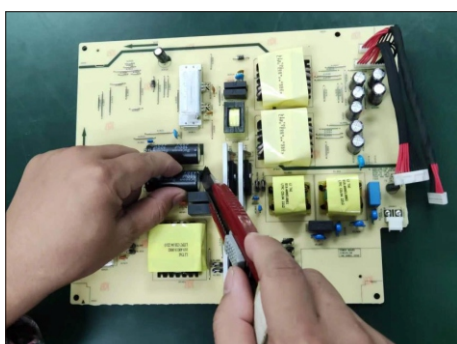
S25-1 Cut the glue between bulk cap. and PCB with a knife.



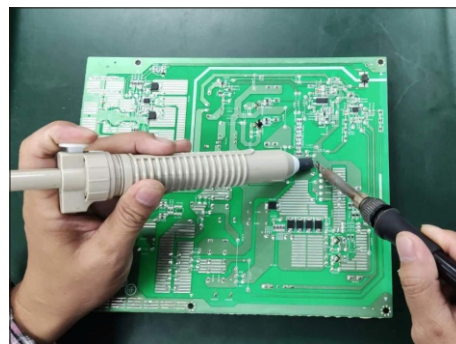
S25-2 Ensure cutting path within the glue, don't touch bulk cap. or PCB.



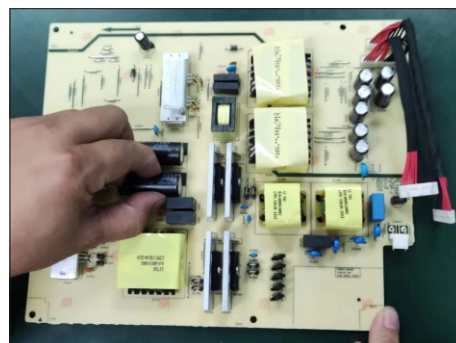
S25-3 Cut into the bottom of bulk cap. and pullit up carefully.



S25-4 Take out bulk cap. pin solder with soldering iron and absorber.



S25-5 Lift the bulk cap. up and away from the PCB.



## 2. Product material information

The following substances, preparations, or components should be disposed of or recovered separately from other WEEE in compliance with Article 4 of EU Council Directive 75/442/EEC.

Capacitors / condensers (containing PCB/PCT)	No used
Mercury containing components	No used
Batteries	No used
Printed circuit boards (with a surface greater than 10 square cm)	Product has printed circuit boards (with a surface greater than 10 square cm)
Component contain toner, ink and liquids	No used
Plastic containing BFR	No used
Component and waste contain asbestos	No used
CRT	No used
Component contain CFC, HCFC, HFC and HC	No used
Gas discharge lamps	No used
LCD display > 100 cm <sup>2</sup>	Product has an LCD greater than 100 cm <sup>2</sup>
External electric cable	Product has external cables
Component contain refractory ceramic fibers	No used
Component contain radio-active substances	No used
Electrolyte capacitors (height > 25mm, diameter > 25mm)	Product has electrolyte capacitors (height > 25mm, diameter > 25mm)

## 3. Tools Required

List the type and size of the tools that would typically can be used to disassemble the product to a point where components and materials requiring selective treatment can be removed.

Tool Description:

- Screwdriver (Phillip head) #1
- Screwdriver (Phillip head) #2
- Penknife
- Soldering iron and absorber