



AX3000 Wi-Fi 6 Air Range Extender

Boost your Wi-Fi



Archer Air E5

Faster Wi-Fi 6 Speed

Larger Capacity[^]

Wi-Fi Dead Zone Killer

Multiple Wall-Mounting Options

8mm Ultra-thin Design





Adaptive Path Selection

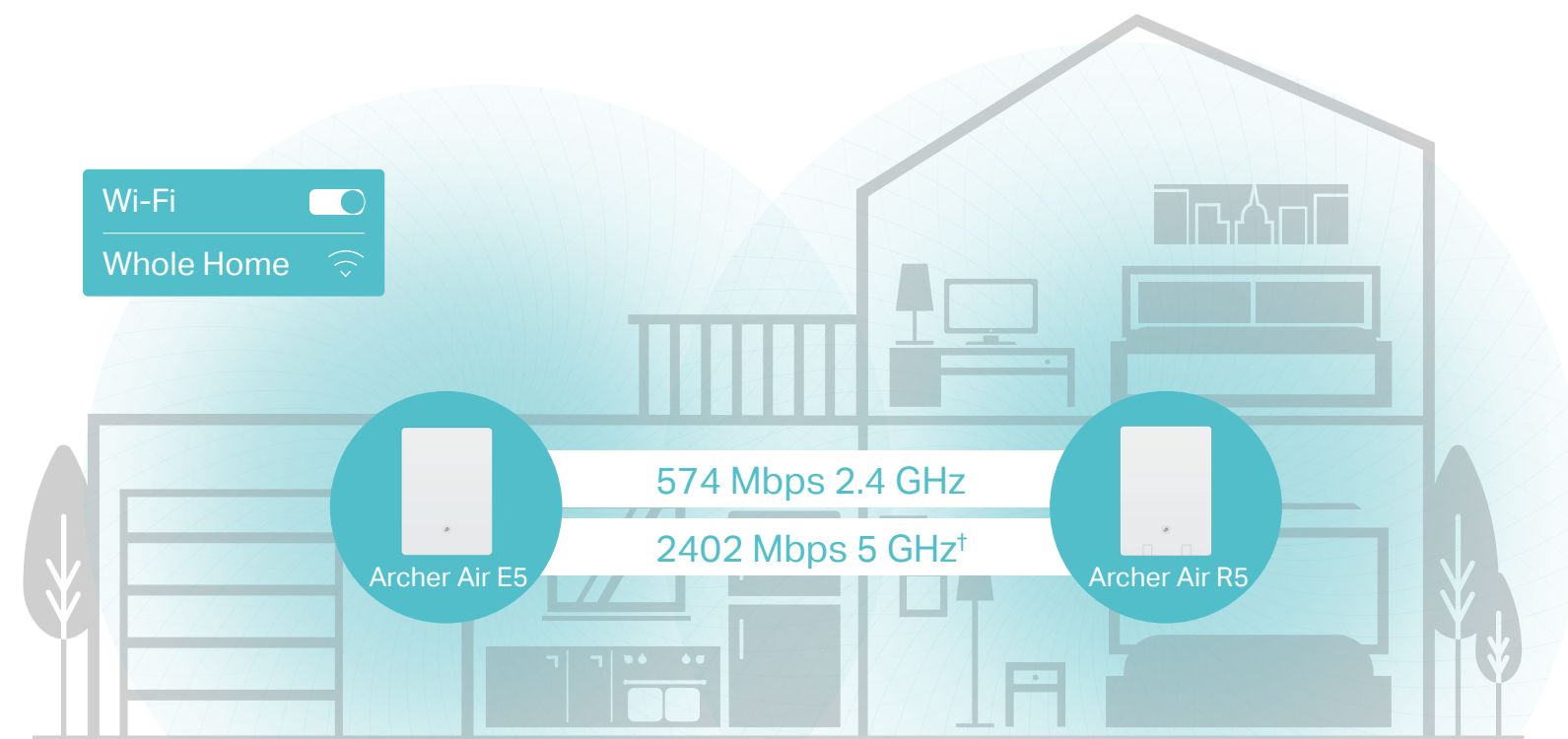
WPA3 Security

Easy Setup Within Minutes

Highlights

One-Touch Mesh Networking via WPS Button

-  Wi-Fi Dead Zone Killer
-  One Wi-Fi Name
-  Uninterrupted Streaming^s
-  Unified Management

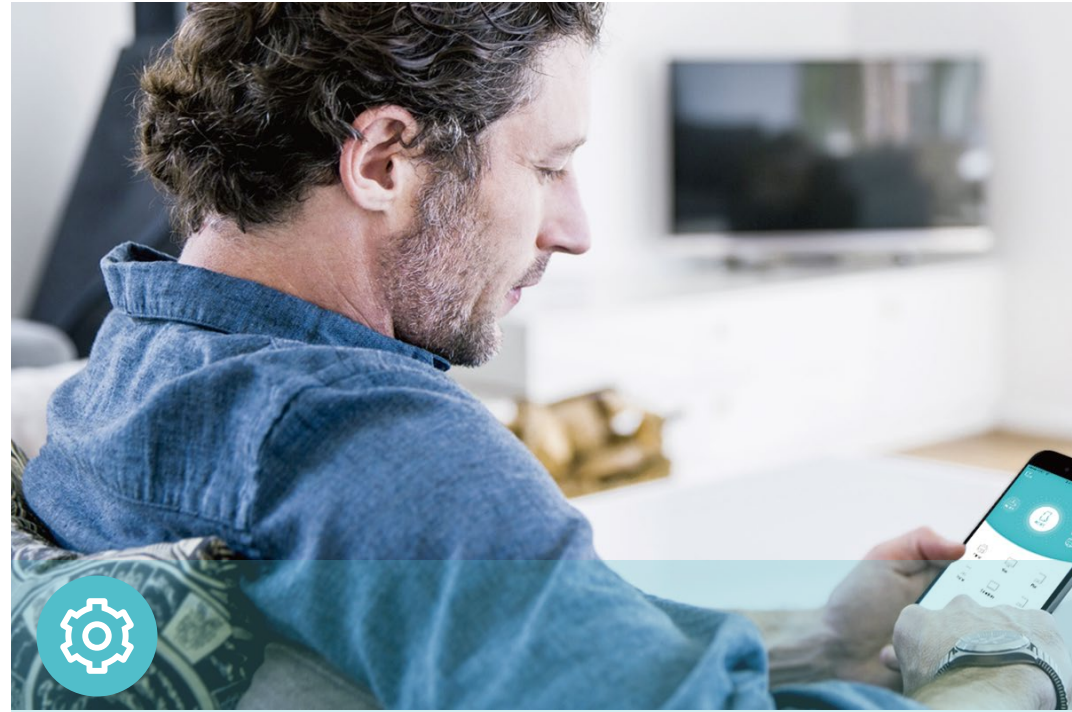


Smart Antennas Boost Wi-Fi Coverage

Built-in smart antennas use intelligent algorithms to auto-detect your devices and switch the antenna arrays to provide the optimal performance.



Features



Ease of Use

- Intuitive Web UI – Ensures quick and simple installation without hassle
- Fast Encryption – One-touch wireless security encryption with the WPS button
- Hassle-free Management with Tether App – Network management is made easy with the TP-Link Tether App, available on any Android or iOS device
- Online Upgrade – Keeps you informed of the latest firmware and allows online updating on the web UI



Speed

- Ultimate Wireless Speed – Combined wireless speeds of up to 574 Mbps (over 2.4 GHz) and 2402 Mbps (over 5 GHz)[†]
- Support Wi-Fi 6 – Turbocharge your devices with wireless speeds of up to 3.0 Gbps
- Adaptive Path Selection – Keep your network running at top-speed by automatically choosing the fastest connection path to the router



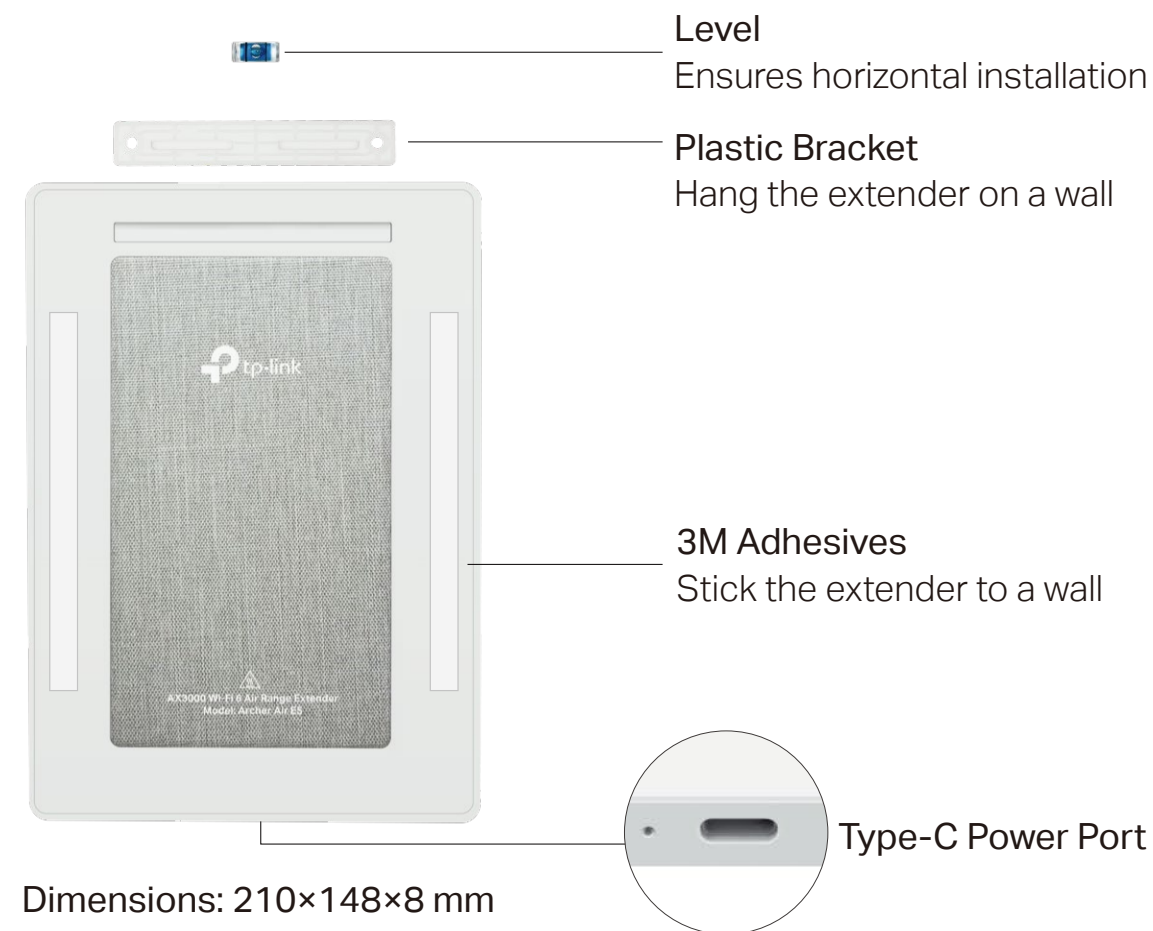
Flexible Installation

- Ultra-thin Design – Ultra-thin and streamlined design with 8mm slim body for Air E5 extender
- Multiple Wall-Mounting Options – Stick the extender to the wall via 3M adhesives or mount it via a mounting bracket

Specifications

Hardware

- Button: LED and WPS 2-in-1 Button
- Input Power: 12V/2A
- Power Consumption: 14W
- Antenna: Internal Antennas



Dimensions: 210×148×8 mm



For more information, please visit

<https://www.tp-link.com/home-networking/range-extender/archer-air-e5/>

or scan the QR code left

Wireless

- Wireless Standards: IEEE 802.11a/n/ac/ax 5 GHz, IEEE 802.11b/g/n/ax 2.4 GHz
- Frequency: 2.4 GHz and 5 GHz
- Signal Rate: 574 Mbps at 2.4 GHz, 2402 Mbps at 5 GHz
- Working Modes: Range Extender
- Reception Sensitivity:
 - 5 GHz:
 - 11ax HE20 MCS0: -96 dBm, 11ax HE20 MCS11: -66 dBm
 - 11ax HE40 MCS0: -93 dBm, 11ax HE40 MCS11: -63 dBm
 - 11ax HE80 MCS0: -90 dBm, 11ax HE80 MCS11: -60 dBm
 - 11ax HE160 MCS0: -87 dBm, 11ax HE160 MCS11: -58 dBm
 - 2.4 GHz:
 - 11ax HE20 MCS0: -96 dBm, 11ax HE20 MCS11: -65 dBm
 - 11ax HE40 MCS0: -93 dBm, 11ax HE40 MCS11: -62 dBm
- Wireless Functions: Smart Antennas, Enable/Disable Wireless Radio, Access Control, LED Control, Power Schedule, Wi-Fi Coverage Adjustment
- Wireless Security: WPA3, WPA2-PSK, WPA
- Transmission Power:
 - CE:
 - <20dBm (2.4GHz), <23dBm (5.15GHz~5.35GHz), <30dBm (5.47GHz~5.725GHz)
 - FCC:
 - <30 dBm (2.4 GHz & 5.15 GHz~5.825 GHz)
- Mesh Technology: EasyMesh-Compatible**

Others

- Certification
 - CE, FCC, RoHS
- System Requirements
 - Internet Explorer, Firefox, Chrome, Safari, or other JavaScript-enabled browser
 - *You are recommended to use the latest version
- Package Contents
 - Wi-Fi Range Extender Archer Air E5
 - Quick Installation Guide
 - Power Adapter
 - Plastic Bracket
 - Level
 - Installation Accessories

©2023 TP-Link

¹Maximum wireless signal rates are the physical rates derived from IEEE Standard 802.11 specifications. Actual wireless data throughput and wireless coverage per ft² are not guaranteed and will vary as a result of network conditions, client limitations, and environmental factors, including building materials, obstacles, volume and density of traffic, and client location.

[†]The product may not be compatible with routers or gateways with firmware that has been altered, is based on open source programs, or is non-standard or outdated.

[§]Uninterrupted Streaming is designed for devices that support the 802.11k/v standard.

[¶]Up to 4x Capacity refers to 4x increase in median throughput under dense environment compared to 11ac wave 2 range extender.

^{*}Saving clients' battery power requires clients to also support the 802.11ax Wi-Fi standard. Actual power reduction may vary as a result of network conditions, client limitations, and environmental factors.

^{**}TP-Link EasyMesh-compatible products can network with other devices that use EasyMesh. Failed connections may be due to firmware conflicts of different vendors. The EasyMesh-Compatible function is still being developed on some models and will be supported in subsequent software updates. This product is compatible with standardized EasyMesh technology but has not obtained the Wi-Fi EasyMesh™ certification.

^{***}Pictures are for reference only. If there are any inconsistencies between the product image and the actual product, the actual product shall prevail.

www.tp-link.com

TP-Link AX3000 Wi-Fi 6 Air Range Extender Archer Air E5