



**We love that you are rocking JLab!  
We take pride in our products and fully stand behind them.**

JLAB  
JBUDS  
ERGONOMIC  
MOUSE



**YOUR WARRANTY**

All warranty claims are subject to JLab authorization and at our sole discretion. Retain your proof of purchase to ensure warranty coverage.



**CONTACT US**

Reach out to us at [support@jlab.com](mailto:support@jlab.com) or visit [jlab.com/contact](http://jlab.com/contact)

**REGISTER TODAY**

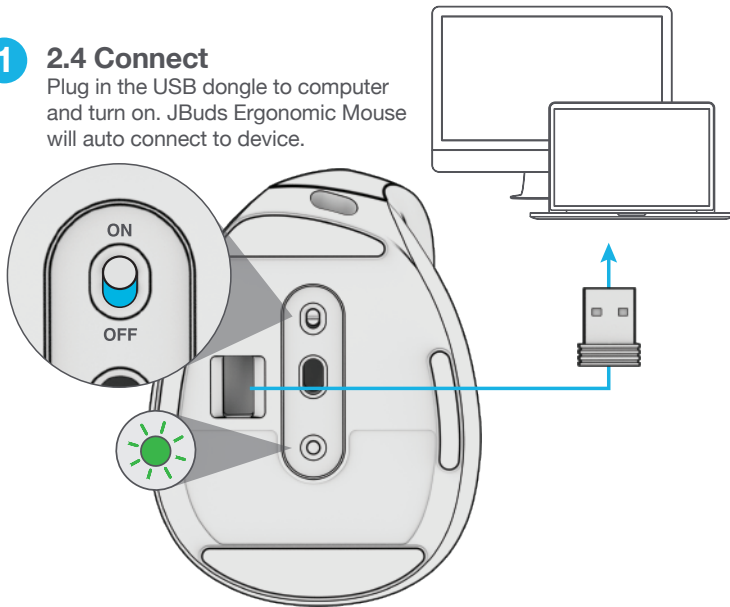
[jlab.com/register](http://jlab.com/register)

[Product updates](#) | [How-to tips](#)  
[FAQs & more](#)

**SETUP**

**1 2.4 Connect**

Plug in the USB dongle to computer and turn on. JBuds Ergonomic Mouse will auto connect to device.



**2 Bluetooth Connect**

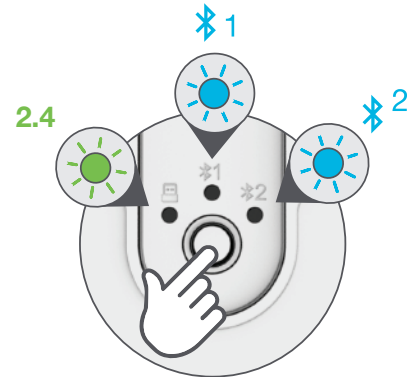
**Quick Press** to toggle to **1** or **2**  
Then **Press Hold** to enter Pairing Mode (Flashing light)  
Select "JBuds Ergo Mouse" in device settings

QUICK PRESS  
TO TOGGLE

PRESS HOLD  
TO PAIR

PAIRING  
MODE:  
Flashing

PAIRED:  
Solid

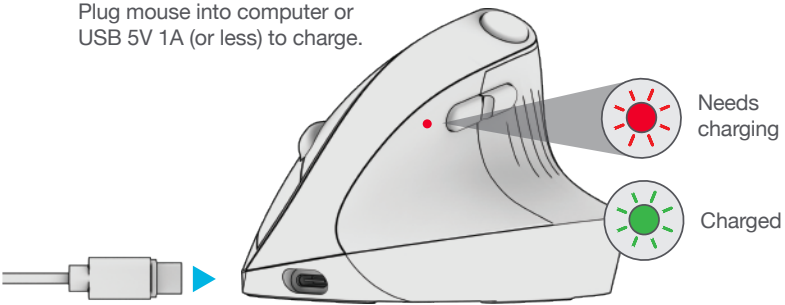


**Have a JLab Epic or JBuds Keyboard?**

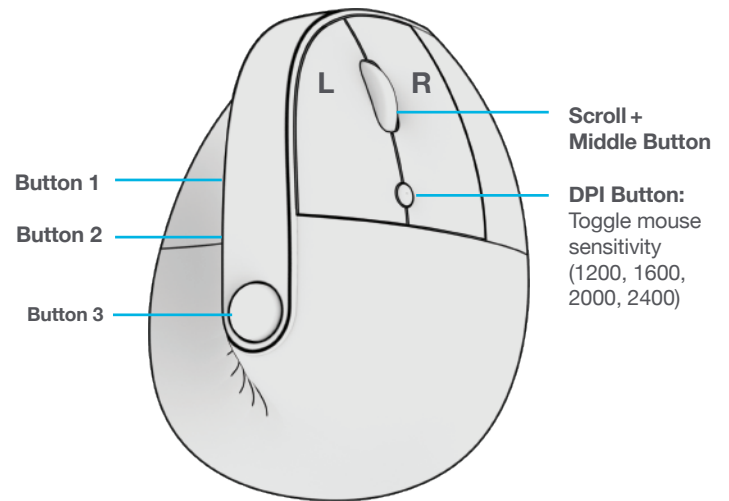
Scan the QR code to learn how to pair both your devices with just one dongle.

## CHARGING

Plug mouse into computer or USB 5V 1A (or less) to charge.



## INTERFACE



Download JLab Work App (for Mac and PC) to fully customize JBuds Ergonomic Mouse at:

**JLAB.COM/SOFTWARE**



[Shop products](#) | [Product alerts](#) | [Burn-in your headphones](#)

JLab Store + Burn-in Tool

