
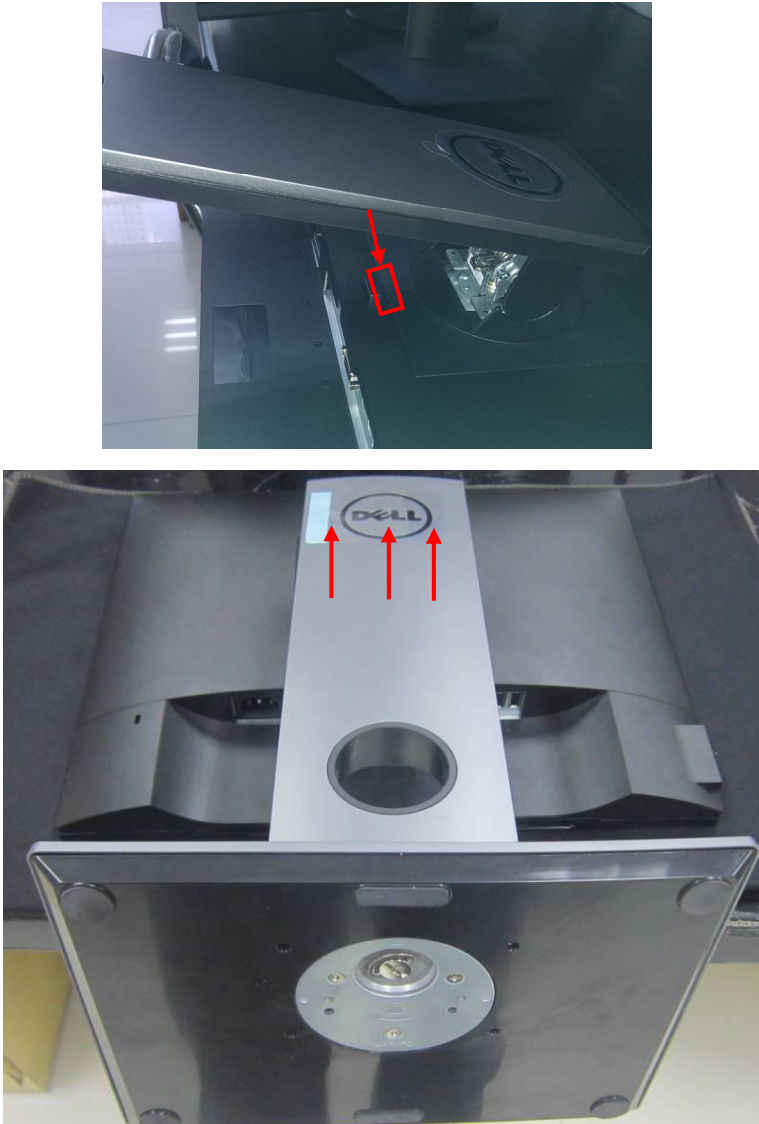
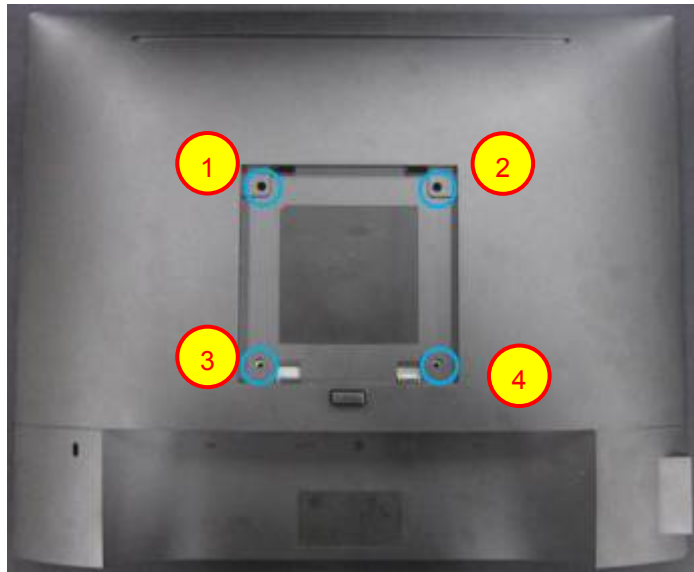


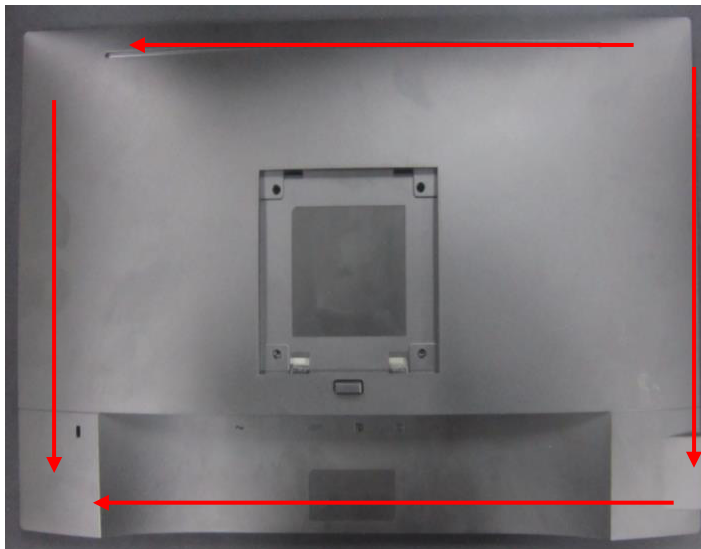
1. Disassembly Procedures:

Step	Figure	Remark
<p>S1. Before disassemble</p>		<p>Turn off power, Unplug external cables from product</p>
<p>S2. Remove the stand</p>		<p>Press the button on the red then pull out the stand upward, stand will be remove.</p>

S3.Remove the REAR COVER.



Use a Philips-head screwdriver to remove 4 screws for unlocking mechanisms.
(No.1~4 screw size=M4x10; Torque=12±2kgf.cm)

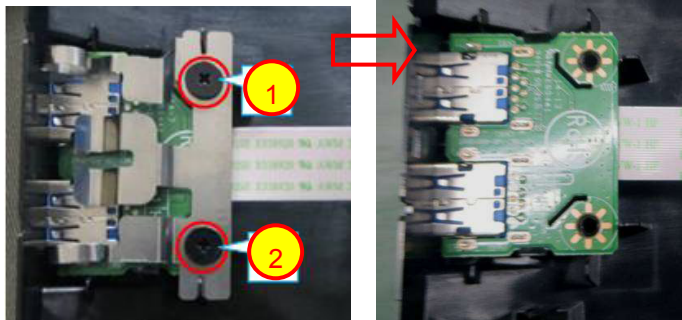
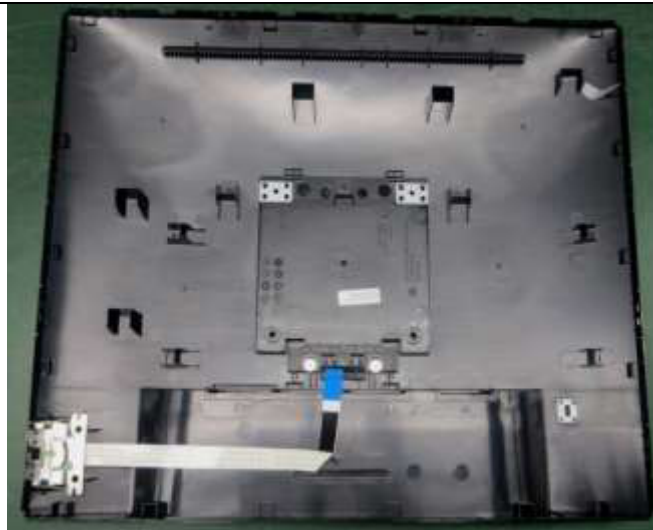


Use Penknife to separate the bezel and rear cover follow the arrows in sequence



Tear down black tape then release the USB cable in red, you can take out rear cover.

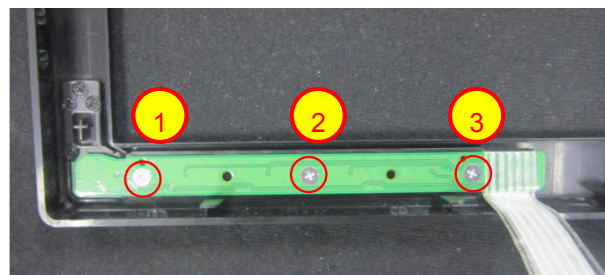
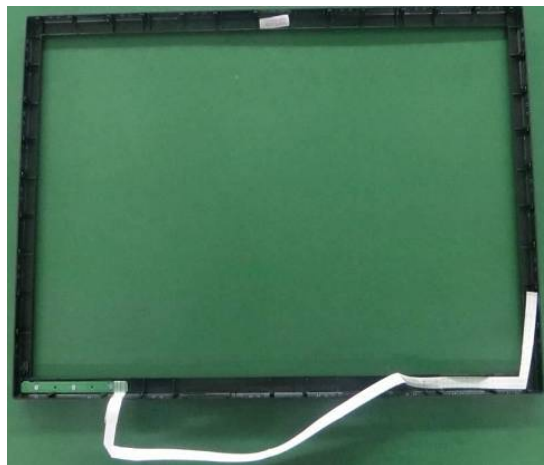
S4.Remove the USB board and key board



Disconnect the pins.

Use a Philips-head screwdriver to remove 2 screws for unlocking USB board.
 (No.1~2 screw size=Q3x4;
 Torque=4±1kgf.cm)

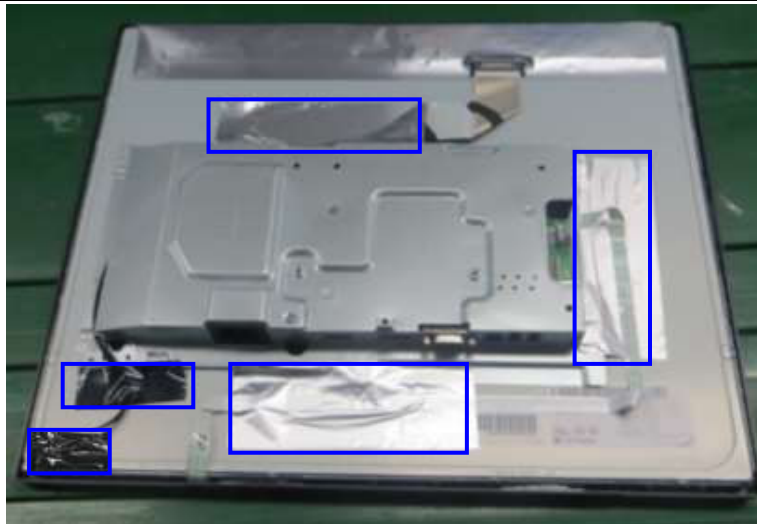
S5.Remove the key board



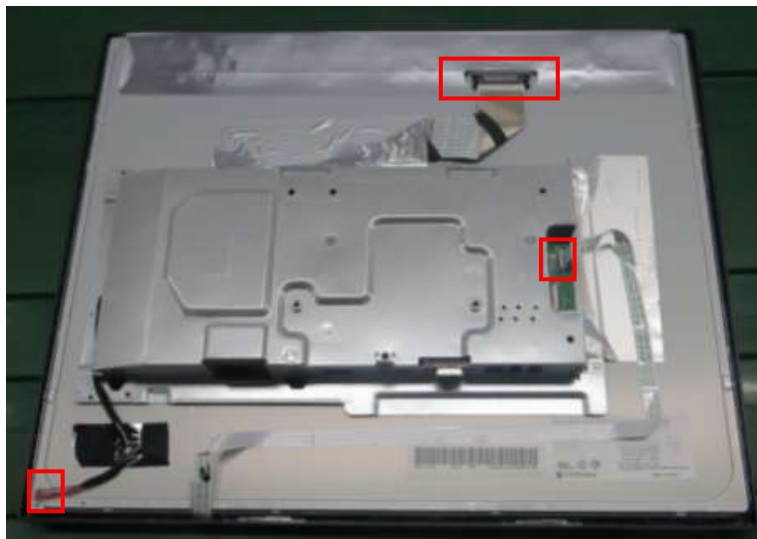
Use a Philips-head screwdriver to remove 3 screws for unlocking key board

(No.1~3 screw size=M2x2.5;
 Torque=0.9±0.4kgf.cm)

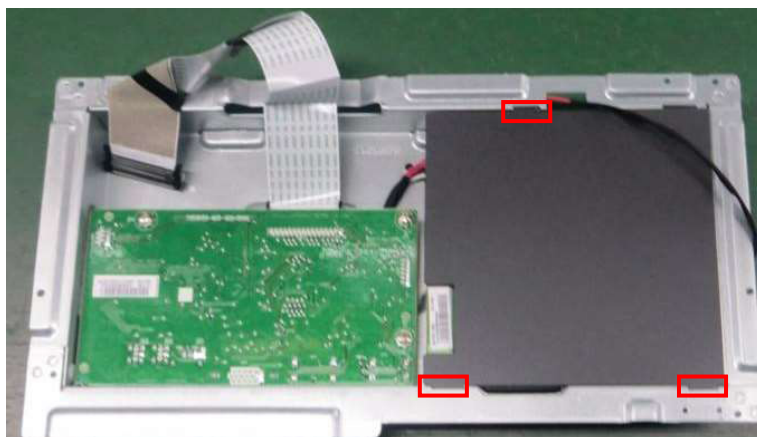
**S6. Remove
Main fram from
Panel**



1. Tear down tape in blue.
2. Disconnect cable in red

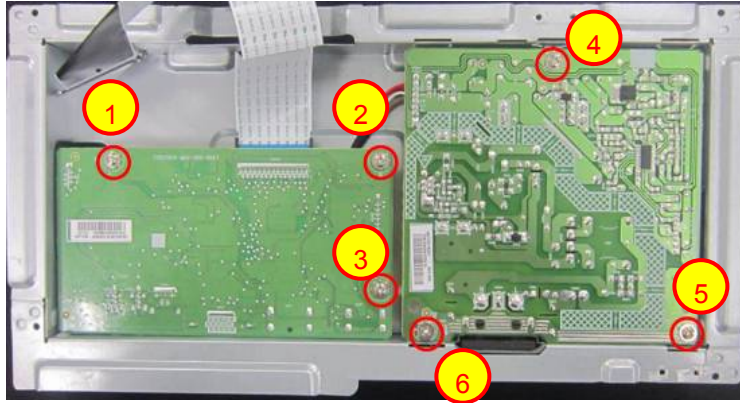


**S7. Remove the
Mylar of Power
Board**



- Tear out connect in red,
remove the Mylar

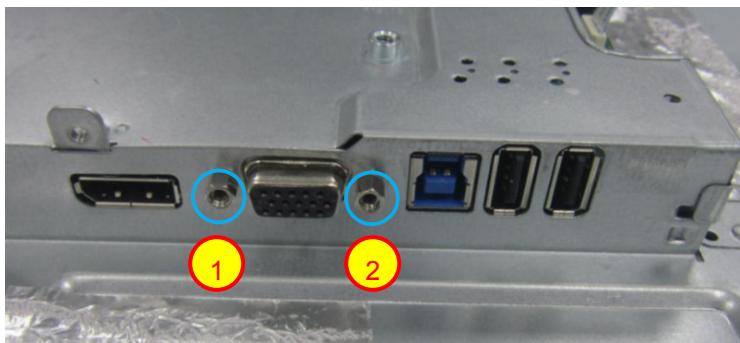
S8. Remove the Main and Power Board



Use a Philips-head screwdriver to remove 6 screws for unlocking Main board and Power board

(No.1~5 screw size=D3x6; Torque=6±1kgf.cm)

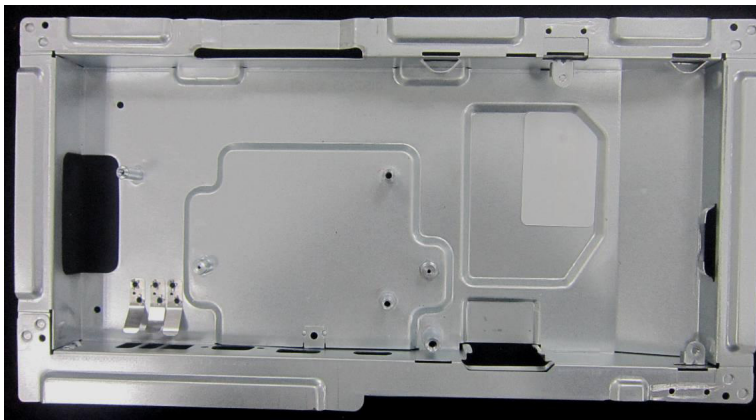
No.6 screw size=M4x6; Torque=6±1kgf.cm)



Use a hex screwdriver to remove 2 screws for unlocking mainboard

(No.1~2 Hex screw Torque= 4.5±0.5kgf.cm)

S9.Mainframe



Mainframe

S10.The panel.



Panel

2. Product material information

The following substances, preparations, or components should be disposed of or recovered separately from other WEEE in compliance with Article 4 of EU Council Directive 75/442/EEC.

Capacitors / condensers (containing PCB/PCT)	No used
Mercury containing components	No used
Batteries	No used
Printed circuit boards (with a surface greater than 10 square cm)	Product has printed circuit boards (with a surface greater than 10 square cm)
Component contain toner, ink and liquids	No used
Plastic containing BFR	No used
Component and waste contain asbestos	No used
CRT	No used
Component contain CFC, HCFC, HFC and HC	No used
Gas discharge lamps	No used
LCD display > 100 cm ²	Product has an LCD greater than 100 cm ²
External electric cable	Product has external cables
Component contain refractory ceramic fibers	No used
Component contain radio-active substances	No used
Electrolyte capacitors (height > 25mm, diameter > 25mm)	Product has electrolyte capacitors (height > 25mm, diameter > 25mm)

3. Tools Required

List the type and size of the tools that would typically can be used to disassemble the product to a point where components and materials requiring selective treatment can be removed.

Tool Description:

- Phillip head Screwdriver
- Hex Screwdriver
- Penknife
- Soldering iron and absorber