



CS22DP

2-Port USB DisplayPort Cable KVM Switch

Quick Start Guide

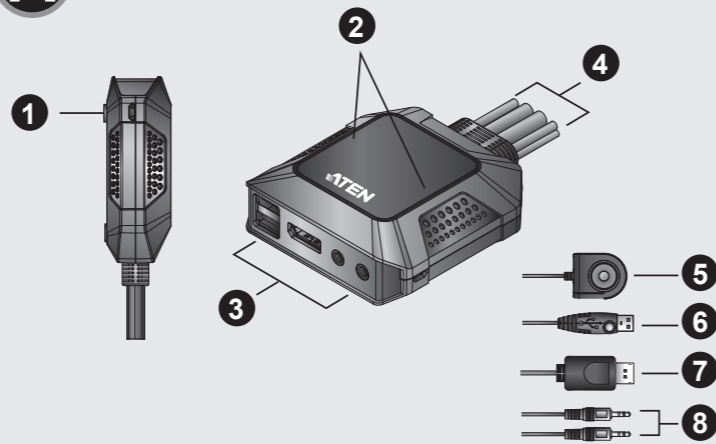
© Copyright 2019 ATEN® International Co., Ltd. ATEN and the ATEN logo are trademarks of ATEN International Co., Ltd. All rights reserved. All other trademarks are the property of their respective owners. This product is RoHS compliant.

Part No. PAPE-1223-H62G Printing Date: 04/2019

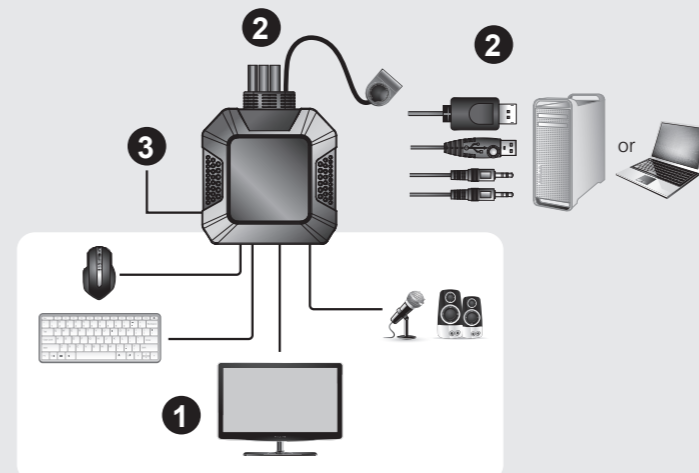


Package Contents
1 CS22DP 2-Port USB DisplayPort Cable KVM Switch
1 User Instructions

A Hardware Review



B Hardware Installation



! To prevent damage to your installation from power surges or static electricity, it is important that all connected devices are properly grounded.

Support and Documentation Notice

All information, documentation, firmware, software utilities, and specifications contained in this package are subject to change without prior notification by the manufacturer.

To reduce the environmental impact of our products, ATEN documentation and software can be found online at <http://www.aten.com/download/>

Technical Support
www.aten.com/support

Scan for more information



EMC Information

FEDERAL COMMUNICATIONS COMMISSION INTERFERENCE STATEMENT:

This equipment has been tested and found to comply with the limits for a Class B digital service, pursuant to Part 15 of the FCC rules. These limits are designed to provide reasonable protection against harmful interference in a residential installation. Any changes or modifications made to this equipment may void the user's authority to operate this equipment. This equipment generates, uses, and can radiate radio frequency energy. If not installed and used in accordance with the instructions, may cause harmful interference to radio communications. However, there is no guarantee that interference will not occur in a particular installation. If this equipment does cause harmful interference to radio or television reception, which can be determined by turning the equipment off and on, the user is encouraged to try to correct the interference by one or more of the following measures:

- Reorient or relocate the receiving antenna;
- Increase the separation between the equipment and receiver;
- Connect the equipment into an outlet on a circuit different from that to which the receiver is connected;
- Consult the dealer/an experienced radio/television technician for help.

FCC Caution: Any changes or modifications not expressly approved by the party responsible for compliance could void the user's authority to operate this equipment.

This device complies with Part 15 of the FCC Rules. Operation is subject to the following two conditions: (1) this device must not cause harmful interference, and (2) this device must accept any interference received, including interference that may cause undesired operation.

이 기기는 가정용(B급) 전자파적합기기로서 주로 가정에서 사용하는 것을 목적으로 하며, 모든 지역에서 사용할 수 있습니다.

CS22DP 2-Port USB DisplayPort Cable KVM Switch

www.aten.com

A Hardware Review

- 1 Micro USB Power Port
- 2 Port LEDs
- 3 Console Ports
- 4 KVM Cables
- 5 Remote Port Selector
- 6 USB Keyboard and Mouse Connectors
- 7 DisplayPort Connectors
- 8 Audio Connectors

Note: The USB ports can be used for USB peripheral sharing. To do so, plug the peripherals and the keyboard or mouse into a USB hub, then plug the hub into the keyboard or mouse port.

- 2 Plug the DisplayPort, USB and Audio connectors of the attached KVM cables into their respective ports on the computers you are installing.
- 3 (Optional) If the power supply to the attached USB peripherals is not sufficient, plug a USB cable into the Micro USB power jack to get power from another USB power source (i.e. PC, USB hub, DC 5V USB power adapter).

Note: A USB to Micro USB cable is not included in this package. Contact your ATEN dealer for product information.

Operation

Use the Remote Port Selector pushbutton* to switch between the two computers.

Note*: Long press the remote port selector pushbutton for 3 seconds to enable/disable monitor re-detection mode on the selected PC port.

B Hardware Installation

To set up the CS22DP, do the following:

- 1 Plug the USB mouse, USB keyboard, monitor, microphone and speakers into their respective ports on the CS22DP.

Conmutador KVM de Cable DisplayPort USB de 2 puertos CS22DP

www.aten.com

A Resumen de hardware

- 1 Puerto de alimentación micro USB
- 2 LEDs de puerto
- 3 Puertos de consola
- 4 Cables KVM
- 5 Selector de puerto remoto
- 6 Conectores de teclado y ratón USB
- 7 Conectores DisplayPort
- 8 Conectores de audio

Nota: Los puertos USB pueden ser utilizados para compartir periféricos USB. Para hacerlo, conecte los periféricos y el teclado o ratón en un concentrador USB, y a continuación, conecte el concentrador en el puerto de teclado o ratón.

- 2 Conecte las clavijas DisplayPort, USB y audio de los cables KVM conectados en sus respectivos puertos en los equipos que está instalando.
- 3 (Opcional) Si la fuente de alimentación a los periféricos USB conectados no es suficiente, conecte un cable USB en el conector de alimentación Micro USB para obtener energía desde otra fuente de alimentación USB (p.ej. un PC, concentrador USB, adaptador de alimentación USB de 5V CC).

Nota: No se incluye un cable USB a Micro USB en este paquete. Contacte con su distribuidor ATEN para información sobre el producto.

B Instalación del hardware

Para configurar el CS22DP, realice lo siguiente:

- 1 Conecte el ratón USB, el teclado USB, monitor, micrófono y altavoces en sus correspondientes puertos del CS22DP.

Funcionamiento

Utilice el pulsador* de Selector de Puerto Remoto para cambiar entre los dos equipos.

Nota*: Mantenga presionado el botón selector de puerto remoto durante 3 segundos para habilitar/deshabilitar el modo de re-detección de monitor en el puerto PC seleccionado.

Commutateur KVM à câble DisplayPort USB 2 ports CS22DP

www.aten.com

A Présentation du matériel

- 1 Port d'alimentation micro USB
- 2 LED de port
- 3 Ports console
- 4 Câbles KVM
- 5 Sélecteur de port distant
- 6 Connecteurs USB clavier et souris
- 7 Connecteurs DisplayPort
- 8 Connecteurs audio

Remarque : Les ports USB peuvent être utilisés pour le partage de périphériques USB. Pour ce faire, branchez les périphériques et le clavier ou la souris sur le concentrateur USB, puis branchez le concentrateur sur le port clavier ou souris.

- 2 Branchez les connecteurs DisplayPort, USB et audio des câbles de KVM reliés sur leurs ports respectifs sur les ordinateurs que vous installez.
- 3 (Facultatif) Si l'alimentation vers les périphériques USB reliés n'est pas suffisante, branchez un câble USB sur le port d'alimentation Micro USB pour obtenir l'alimentation d'une autre source d'alimentation USB (c'est-à-dire le PC, le concentrateur USB, l'adaptateur secteur USB 5V).

Remarque : Aucun câble USB vers Micro USB n'est inclus dans cet emballage. Contactez votre revendeur ATEN pour des informations sur le produit.

Fonctionnement

Utilisez le bouton poussoir* de sélection de port distant pour basculer entre les deux ordinateurs.

Remarque* : Appuyez longuement sur le bouton de sélecteur de port distant pendant 3 secondes pour activer/désactiver le mode de re-détection de moniteur sur le port du PC sélectionné.

B Installation du matériel

Pour configurer le CS22DP, procédez comme suit :

- 1 Branchez la souris USB, le clavier USB, le moniteur, le microphone et les haut-parleurs sur les ports respectifs du CS22DP.

Switch KVM cavo USB DisplayPort 2 porte CS22DP

www.aten.com

A Descrizione hardware

- 1 Porta di alimentazione micro USB
- 2 LED porta
- 3 Porte console
- 4 Cavi KVM
- 5 Selettore porta remota
- 6 Connettori per tastiera e mouse USB
- 7 Connettori DisplayPort
- 8 Connettori audio

Nota: Le porte USB possono essere utilizzate per la condivisione delle periferiche USB. A tal fine, collegare le periferiche e la tastiera o il mouse in un hub USB, quindi collegare l'hub nella porta della tastiera o del mouse.

- 2 Collegare i connettori DisplayPort, USB e audio dei cavi KVM collegati alle rispettive porte dei computer che si stanno installando.
- 3 (Opzionale) Se l'alimentazione delle periferiche USB collegate non è sufficiente, collegare un cavo USB nel jack di alimentazione micro USB per ottenere alimentazione da un'altra fonte di alimentazione USB (ovvero PC, hub USB, adattatore di alimentazione USB 5 V CC).

Nota: IL cavo USB-micro USB non è incluso nella confezione. Contattare il rivenditore ATEN per informazioni sul prodotto.

B Installazione dell'hardware

Per impostare CS22DP, agire come segue:

- 1 Collegare il mouse USB, la tastiera USB, il monitor, il microfono e gli altoparlanti nelle rispettive porte di CS22DP.

Funzionamento

Utilizzare il pulsante* Selettore porta remota per commutare tra i due computer.

Nota*: Premere a lungo il pulsante di selezione della porta remota per 3 secondi per attivare/disattivare la modalità di ri-rilevazione del monitor sulla porta PC selezionata.

2-Port-USB-DisplayPort-Kabel-KVM-Switch CS22DP

www.aten.com

A Hardwareübersicht

- 1 Micro-USB-Stromanschluss
- 2 Anschluss-LEDs
- 3 Konsolenports
- 4 KVM-Kabel
- 5 Remote-Port-Wähler
- 6 Anschlüsse für USB-Tastatur und -Maus
- 7 DisplayPort-Anschlüsse
- 8 Audioanschlüsse

Hinweis: Die USB-Anschlüsse können zur Freigabe von USB-Peripherie genutzt werden. Schließen Sie dazu Peripherie und Tastatur oder Maus an einen USB-Hub an. Verbinden Sie dann den Hub mit einem Tastatur- oder Mausanschluss.

- 2 Verbinden Sie die DisplayPort-, USB- und Audioanschlüsse der angeschlossenen KVM-Kabel mit ihren entsprechenden Anschlüssen den den Computern, die Sie installieren.
- 3 (Optional) Falls die Stromversorgung der angeschlossenen USB-Peripherie nicht ausreicht, schließen Sie zur Versorgung über eine weitere USB-Stromquelle (z. B. PC, USB-Hub, 5-V-Gleichspannung-USB-Netzteil) ein USB-Kabel an den Micro-USB-Stromanschluss an.

Hinweis: Ein USB-zu-Micro-USB-Kabel sind im Lieferumfang enthalten. Wenden Sie sich für Produktinformationen an Ihren ATEN-Händler.

Bedienung

Wechseln Sie mit der Remote-Port-Wähler-Drucktaste* zwischen zwei Computern.

Hinweis*: Drücken Sie 3 Sekunden lang die Taste zur Auswahl des Remote-Ports, um den Monitor-Wiedererkennungsmodus am ausgewählten PC-Port zu aktivieren/deaktivieren.

B Hardwareinstallation

Gehen Sie zur Einrichtung des CS22DP wie folgt vor:

- 1 Schließen Sie USB-Maus, USB-Tastatur, Monitor, Mikrofon und Lautsprecher an ihre entsprechenden Anschlüsse am CS22DP an.

CS22DP 2-портовый USB DisplayPort кабельный KVM переключатель

www.aten.com

A Обзор аппаратного обеспечения

- 1 Разъем электропитания Micro USB
- 2 Индикаторы портов
- 3 Порты консоли
- 4 Кабели KVM
- 5 Селектор удаленных портов
- 6 USB разъемы для клавиатуры и мыши
- 7 Разъемы DisplayPort
- 8 Аудио разъемы

или мышь к USB концентратору, а затем подключите концентратор к разъему для клавиатуры или мыши.

- 2 Подключите разъемы DisplayPort, USB и Аудио прикрепленных KVM кабелей к соответствующим портам на устанавливаемых компьютерах.
- 3 (Дополнительно) Если на подключенные периферийные USB устройства подается недостаточное питание, подключите USB кабель к разъему питания Micro USB для подачи питания от другого источника USB (т.е. ПК, USB концентратора, блока питания USB 5 В постоянного тока).

Примечание. Кабель USB - Micro USB не входит в комплект поставки данного устройства. Для получения сведений об изделии обращайтесь к торговому представителю ATEN.

Работа

Для переключения между двумя компьютерами используется нажимная кнопка* "Селектор удаленных портов".

Примечание*: Для включения/выключения режима перенаправления монитора на выбранный порт ПК нажмите и удерживайте в течение 3 секунд кнопку выбора удаленного порта.

