

**BenQ**

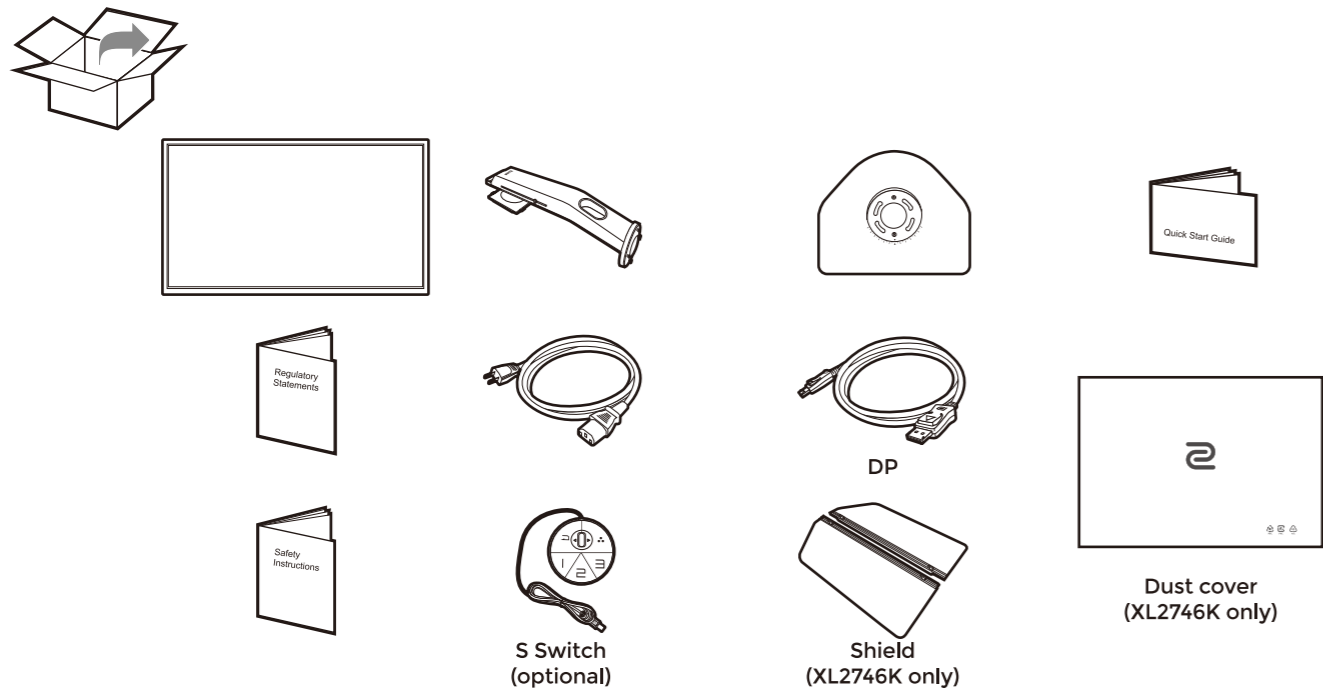
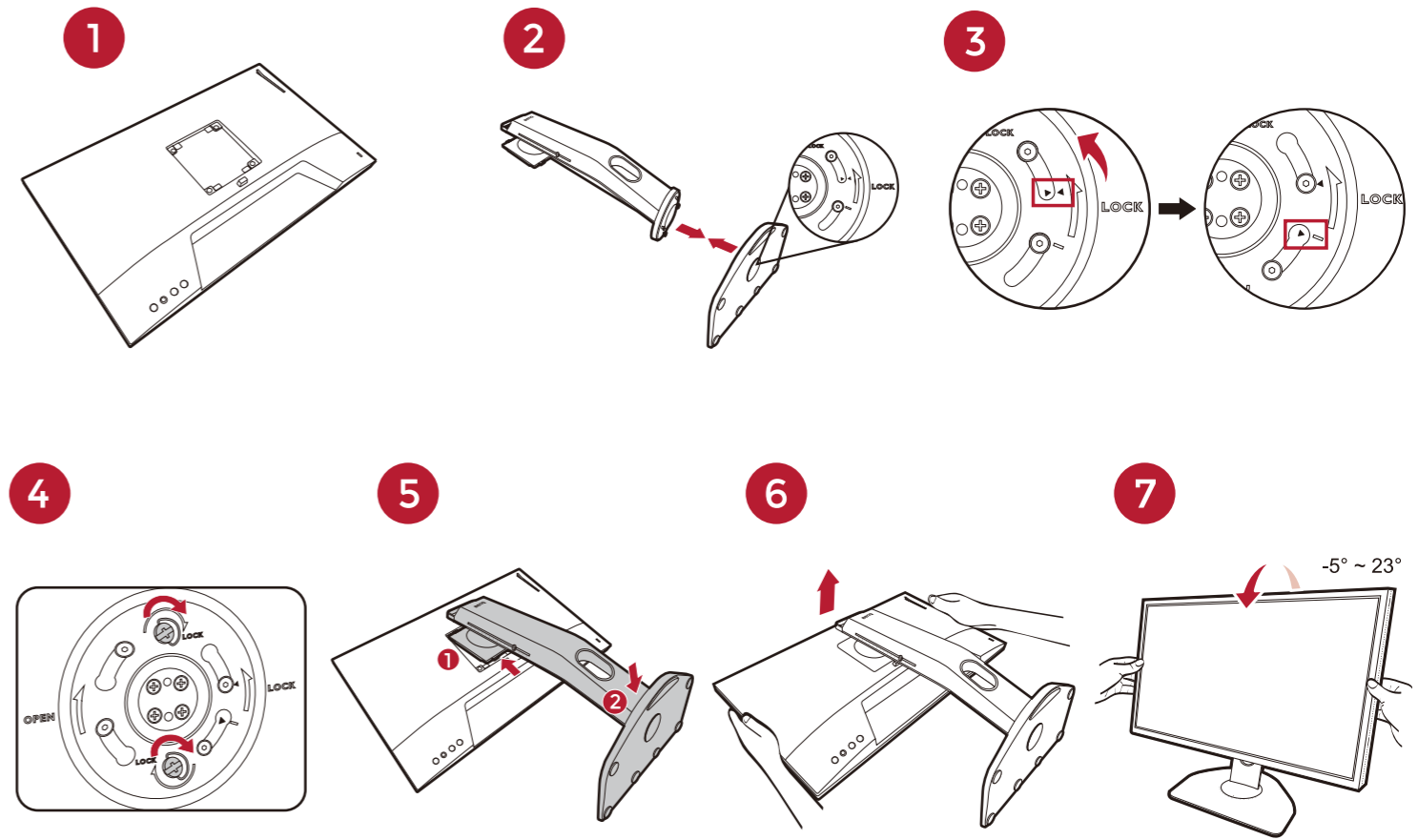


# XL MONITOR FOR e-SPORTS

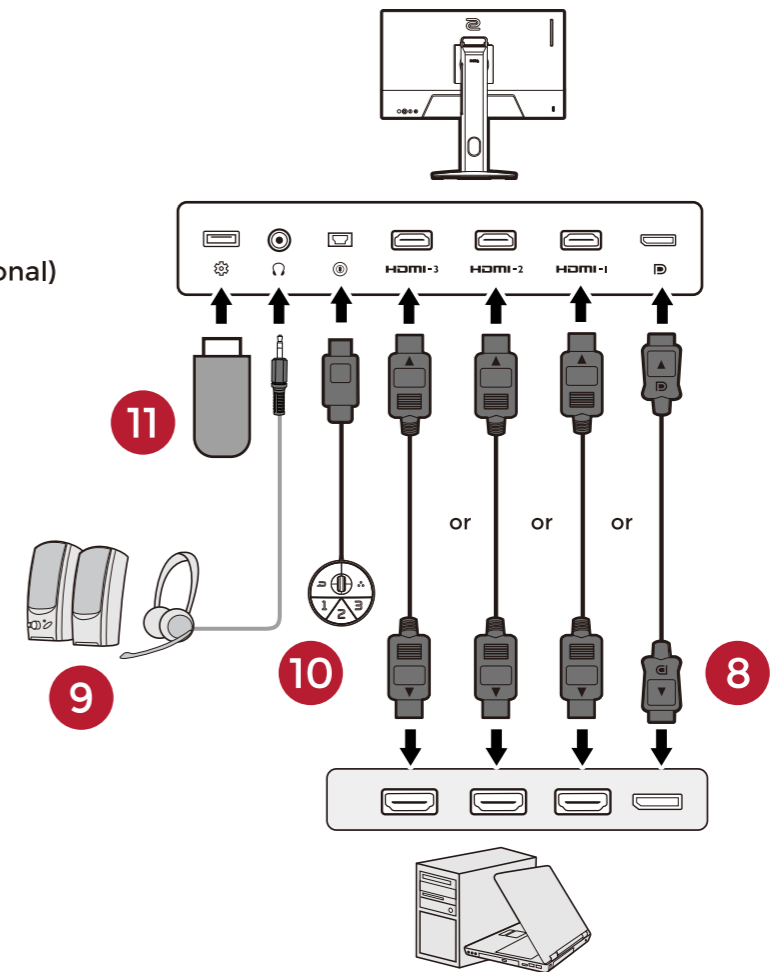
XL Series  
Quick Start Guide

DN: Z-XL27K-EQ-V1

© 2021 BenQ Corporation. All rights reserved. Rights of modification reserved.



- 8 Video
- 9 Audio (optional)
- 10 S Switch (optional)
- 11 Firmware update (optional)



0-40°C 10-90% 0-3000m  
-20-60°C 10-60% 0-12000m



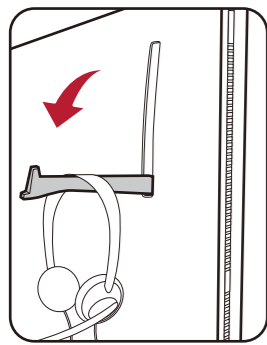
**HDMI**  
HIGH-DEFINITION MULTIMEDIA INTERFACE

(For models with HDMI inputs)

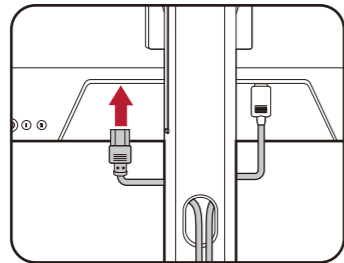


P/N: 4J.XXXXX.XXX

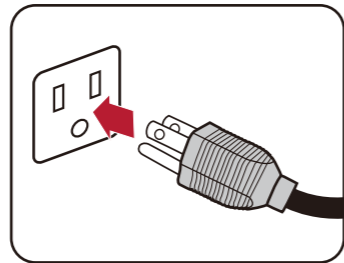
12



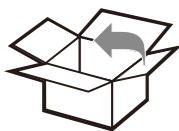
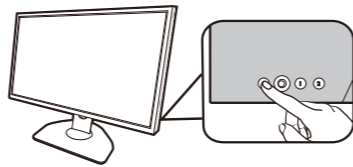
13



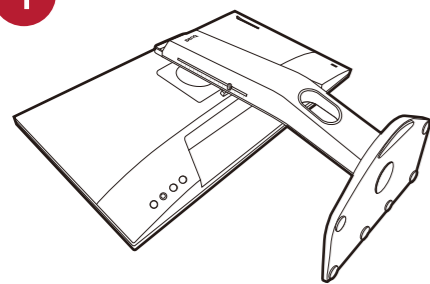
14



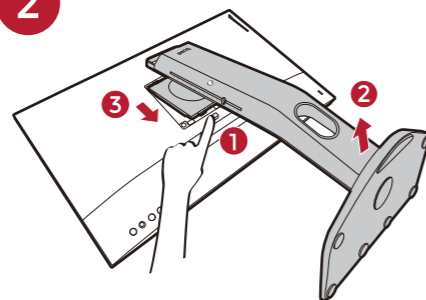
15



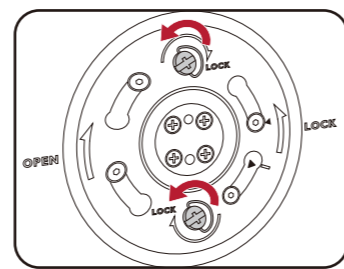
1



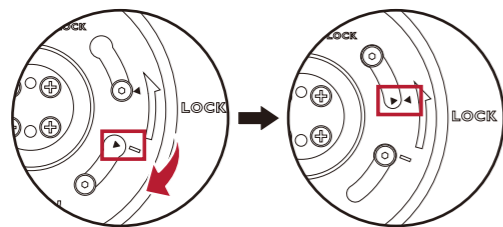
2



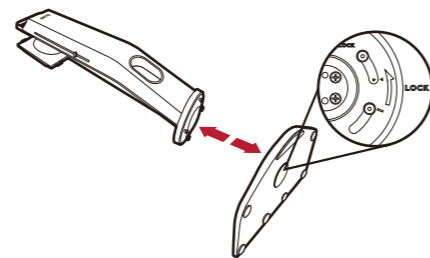
3



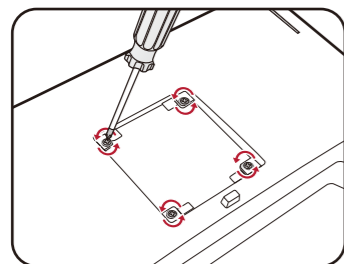
4



5

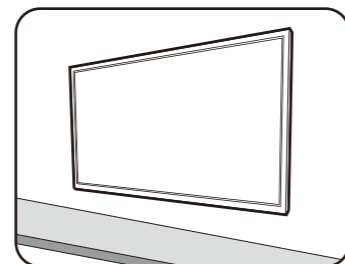


1



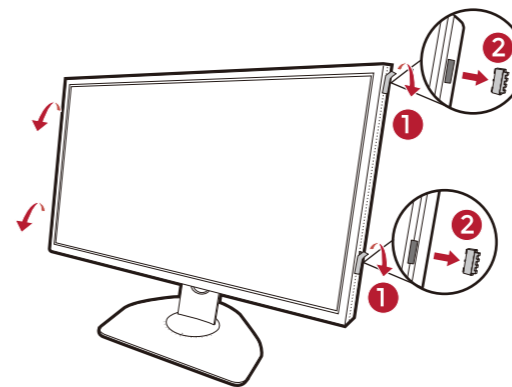
M4 x 10 mm

2

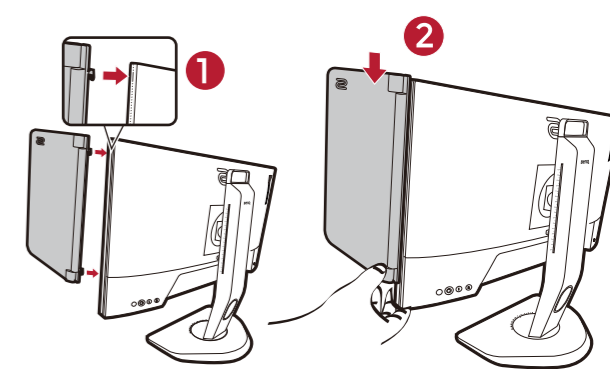


### Installing the Shield (optional step)

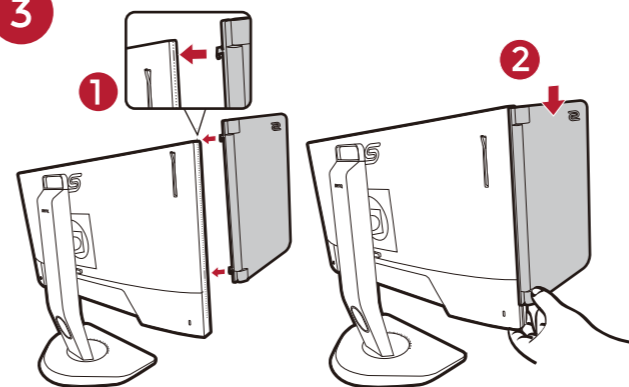
1



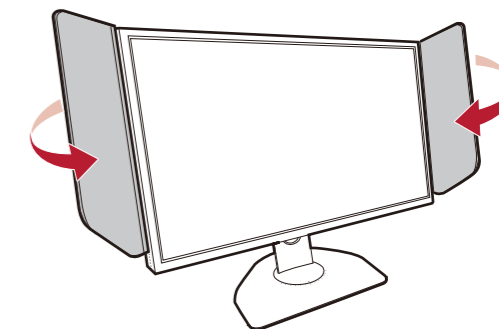
2



3



4



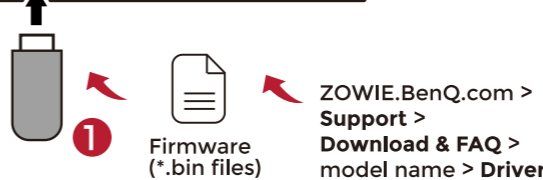
### Firmware update (optional step)

Internet café mode is recommended for cybercafe managers. Please activate it as desired while updating.

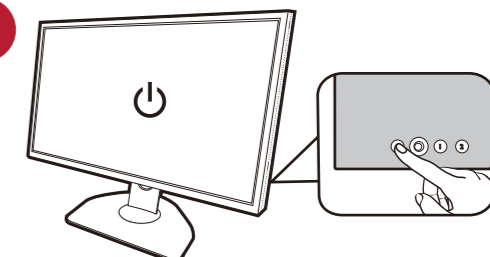
1



2

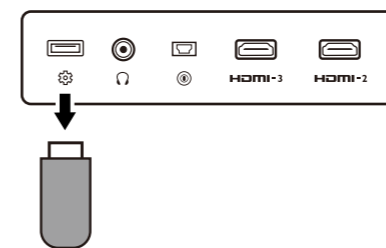


2

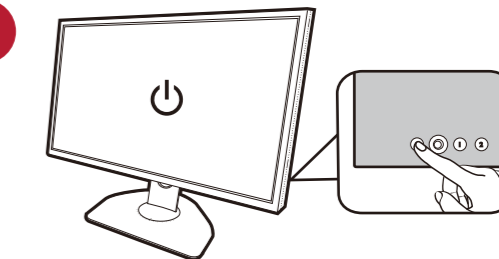


Restart the monitor. Follow the on-screen instructions.

3



4

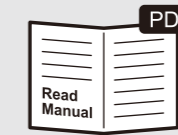


Press the power key to reboot the monitor to finish.



XL Setting to Share

ZOWIE.BenQ.com > Support > Download & FAQ > Model name > Software



ZOWIE.BenQ.com > Support > Download & FAQ > Model name > User Manual



For product support and more information.