



## VC-TR40 AI Auto-Tracking Camera



Compatible with



Lumens® VC-TR40 is a dual-lens auto-tracking camera, featuring a 1080p 60fps image processor and a 20x optical zoom lens. Its secondary panoramic camera can analyze the whole view while the main camera is capturing an individual. The VC-TR40's AI-powered human face recognition and gesture control technology makes it easier than ever to track the subject. Advanced functionality includes auto-framing and partition-framing technology that intelligently zooms to capture all guests in view. The VC-TR40 can follow a subject smoothly and reliably, making it ideal for use in presentations, conferences, worship services, studios, and lecture halls.

### Key Features

- AI-Powered Human Face Recognition
- 3 Tracking modes and 2 Framing modes
- Mount upright or inverted
- HDMI, Ethernet, 3G-SDI and USB simultaneous output
- 1080p 60fps with 20x Optical Zoom



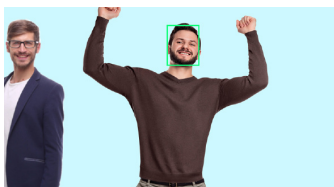
#### Stage Tracking and Everywhere Tracking Mode

In Stage Tracking mode, the VC-TR40 will pan left and right to follow a presenter within a defined area. In the Everywhere Tracking mode, the camera will continuously track the presenter's movement left and right, forwards and backwards.



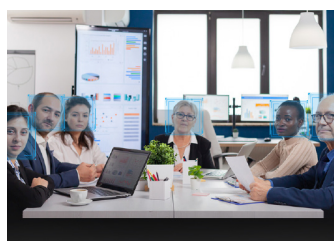
#### Partition Tracking Mode

When the presenter moves inside a user-defined Partition Area, the camera switches to a preset angle and zoom. When outside a Partition Area, the camera autonomously follows the presenter.



#### Gesture Control Tracking Method

The VC-TR40 features advanced gesture control. When the presenter raises their hands, the tracking target will switch automatically. You can also manually change the tracked subject by selecting the individual via the web interface.



#### Auto-Framing and Partition Framing Mode

With the Auto-framing function, the VC-TR40 will dynamically adjust to capture all delegates, re-framing the view if participants join or leave during the session. In Partition-Framing mode, the camera will go to a preset position when the presenter walks in. When the presenter walks out the area, the camera will go back to the Auto-Framing mode.



#### Flexible Mounting

The VC-TR40 can be positioned upright or suspended from the ceiling installation. When inverted, the camera can re-orient the image and flip the camera controls.



## Product Specifications

PTZ Camera	
Sensor	1/2.8" 2.16M
Video Format	1080p : 60 / 50 / 30 / 25 720p : 60 / 50
Video Output (HD) Interface	HDMI / Ethernet / 3G-SDI / USB 3.0
Optical Zoom	20x
Digital Zoom	12x
Viewing Angle	58.7° (H) / 33° (V) / 67.3° (D)
Aperture	F1.6~F2.8
Focal Length	4.9mm ~ 94mm
Shutter Speed	1/25 ~ 1/10,000 sec
Minimum Object Distance	500mm
Video S/N Ratio	> 50dB
Minimum Illumination	1 lux (F1.6, 50IRE, 30fps)
Focus System	Auto / Manual
Gain Control	Auto / Manual
White Balance	Auto / Manual
Exposure Control	Auto / Manual
WDR	Yes
3D NR	Yes
Image Flip	Yes
Auto Tracking	Everywhere / Stage / Partition
Auto Framing	Everywhere / Partition
Gesture Control	Yes
Panoramic camera	
Sensor	1/2.8" 2MP CMOS
Video Format	720p30
Viewing Angle	111° (H) / 62° (V)
Aperture	F2.4
Focal Length	3.1mm

Pan & Tilt	
Panning Angle	+170° ~ -170°
Panning Speed	0.2° ~ 120°/sec
Tilting Angle	+90° ~ -30°
Tilting Speed	0.2° ~ 80°/sec
Preset Positions	256
Output	
HDMI / 3G-SDI	1080p60
IP Stream	PTZ Camera Main : 1080p60 Second : 720p30 Panoramic Camera : 720p30
IP Compression	H.264
USB Output	1080p30
USB Compression	MJPEG
Network	
IP Protocol	HTTP / RTSP / RTMP / RTMPS / SRT
PoE	Yes (IEEE802.3af)
Audio	
Audio Input	Line In / MIC In
Audio Output	Ethernet / USB 3.0 / HDMI / SDI
Audio Compression Format	USB : PCM
Camera Control	
Interface	RS-232 / Ethernet / USB 3.0
Protocol	VISCA / ONVIF
UVC	1.1
UAC	Yes
General	
DC In	12V +/- 20%
Power consumption	PoE : 11W DC In : 10W
Body Color	Black / White
Weight	3.3 lbs (1.5 kg)
Dimension	7.5" x 7.3" x 5.4" (190 x 185 x 138 mm)

## I/O Connections



# Lumens®

Lumens Integration, Inc.  
4116 Clipper Court  
Fremont, CA, 94538  
Phone: +1-866-600-0988  
Fax: +1-510-252-1389

Lumens Europe  
De Nayerstraat 17 9470  
Denderleeuw Belgium  
Phone: +32-473-58-38-95  
Fax: +32-2-452-76-00



www.MyLumens.com